

Appendix A

Photographs of extraction samples



ProjectNo: A00196, ImageNo: 110A0646

— 1 mm —

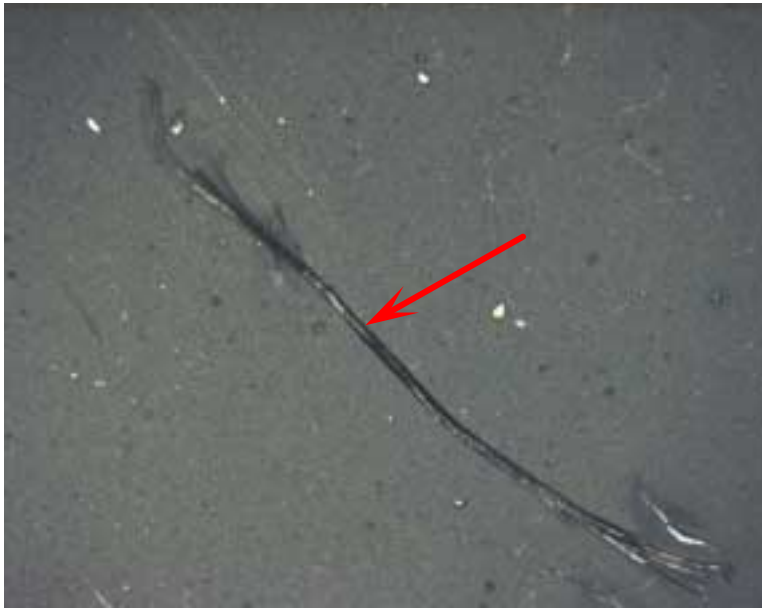
Figure A1. The filtrant from Sample 159, Hawaiian Airlines N662HA. The small particles resemble paint chips, plastic chips, glass particles, sand particles, and metallic shavings. The large dark bead shown by the unlabeled arrow is consistent with an iron material.



ProjectNo: A00196, ImageNo: 110A0665

— 1 mm —

Figure A2. The filtrant from Sample 166, Hawaiian Airlines N709HA. The copper particle shown by the unlabeled arrow is consistent with Acme nut material.



ProjectNo: A00196, ImageNo: 110A0655

— 2 mm —

Figure A3. The filtrant from Sample 42, AirTran Airways N845AT. The dark particle shown by the unlabeled arrow appears similar to a piece of wire.



ProjectNo: A00196, ImageNo: 110A0641

— 1 mm —

Figure A4. The grainy sand-like filtrant from Sample 10, AirTran Airways N819AT.



ProjectNo: A00196, ImageNo: 110A0765

┌ 2 mm ┐

Figure A5. The filtrant from Sample 65, AirTran Airways N919VV. This filtrant included a red pliable particle, a brown fibrous particle that appears to be wood, and a black particle that appears similar to wire.



ProjectNo: A00196, ImageNo: 110A0772

┌ 2 mm ┐

Figure A6. The filtrant from Sample 122, AirTran Airways N919VV. The small particles resemble paint chips, plastic chips, glass particles, and metallic shavings.



ProjectNo: A00196, ImageNo: 110A0639 |—— 2 mm ——|

Figure A7. The filtrant from Sample 16, Delta Air Lines N904DA. The particles shown by the unlabeled arrows appear to be drill shavings and are consistent with an iron material.



ProjectNo: A00196, ImageNo: 110A0662 |—— 1 mm ——|

Figure A8. The filtrant from Sample 8, Delta Air Lines N907DA. The copper particles are consistent with Acme nut material.



ProjectNo: A00196, ImageNo: 110A0657 |— 2 mm —|

Figure A9. The filtrant from Sample 69, Reliant Airlines N915R. The red particle shown by the unlabeled arrow appears similar to a glass material.



ProjectNo: A00196, ImageNo: 110A0660 |— 1 mm —|

Figure A10. The filtrant from Sample 3, Northwest Airlines N925US. The copper particles are consistent with Acme nut material.



ProjectNo: A00196, ImageNo: 110A0650

— 1 mm —

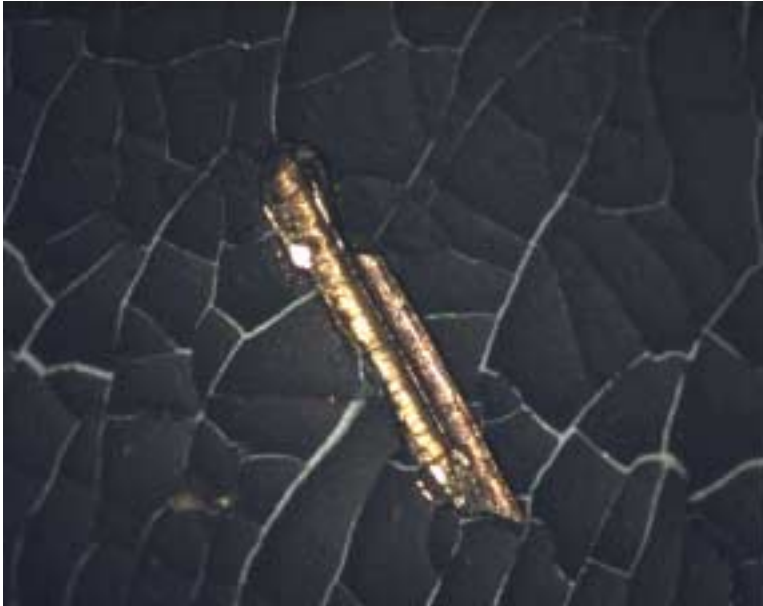
Figure A11. The filtrant from Sample 22, TWA Airlines N941. Small black particles are shown by the unlabeled arrows.



ProjectNo: A00196, ImageNo: 110A0653

— 1 mm —

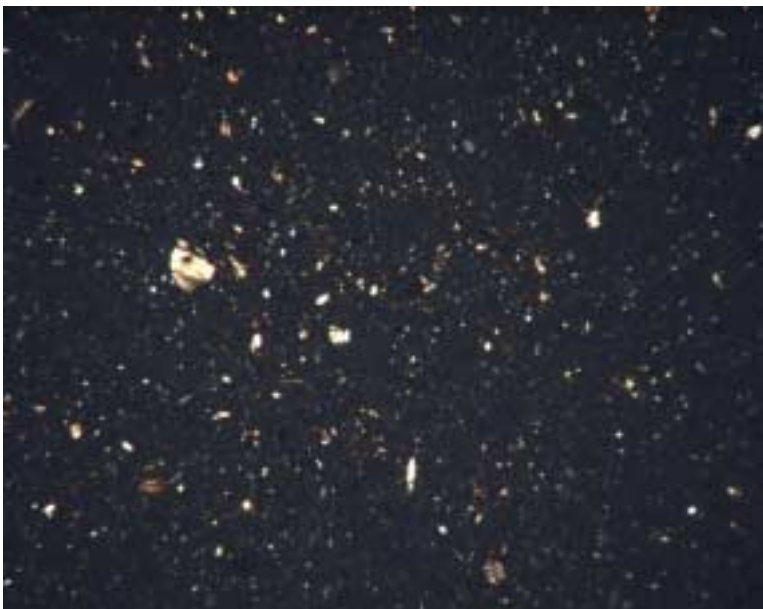
Figure A12. The filtrant from Sample 13, Alaska Airlines N981AS. The copper particle shown by the unlabeled arrow is consistent with Acme nut material.



ProjectNo: A00196, ImageNo: 110A0637

— 1 mm —

Figure A13. The filtrant from Sample 6, Alaska Airlines N982AS. The copper particle is consistent with Acme nut material.



ProjectNo: A00196, ImageNo: 110A0643

— 1 mm —

Figure A14. The filtrant from Sample 93, Alaska Airlines part number DCA2192. The copper particles are consistent with Acme nut material.



ProjectNo: A00196, ImageNo: 110A0648 |———— 1 mm ———|

Figure A15. The filtrant from Sample 126, China Northern Airlines part number DGA0024. The particle shown by the unlabeled arrow is consistent with Acme nut material.