

**NATIONAL TRANSPORTATION SAFETY BOARD**

Office of Aviation Safety  
Washington, D.C. 20594

March 19, 2010

**Airworthiness Group Chairman's Factual Report**

DCA-08-IA-033

**A. ACCIDENT**

Operator: United Airlines Inc.  
Location: Newark Liberty International Airport, Newark (EWR), New Jersey  
Date: January 25, 2008  
Time: 9:45 AM Eastern Standard Time  
Airplane: Airbus A320, N462UA

**B. AIRWORTHINESS GROUP**

Chairman: Scott Warren  
National Transportation Safety Board  
Washington, D.C.

**C. SUMMARY**

On January 25, 2008, a United Airbus A320, registration N462UA, experienced multiple avionics and electrical failures, including loss of all communications, shortly after rotation while departing Newark Liberty International Airport, Newark (EWR), New Jersey. The flight returned for landing at EWR and electrical power was restored to the cockpit after landing when the flight crew selected the AC Essential Bus button. There were no injuries to the 107 passengers and crew aboard the airplane and no damage to the airplane. The airplane was operating under the provisions of 14 Code of Federal Regulations Part 121 and was a regularly scheduled passenger flight to Denver International Airport, Denver, Colorado.

According to the flight crew, shortly after takeoff, the captain's primary flight display (PFD) and navigational display (ND), along with the upper electronic centralized

aircraft monitoring (ECAM)<sup>1</sup> display, went blank. The ND for the first officer remained functional, as did the lower ECAM display; however, the first officer reported that his flight director was not functioning, and that he initially questioned the validity of the attitude information on his PFD, but that the information appeared to be reliable later in the flight. In addition, although the handle that controls the landing gear had been moved to the retract position after takeoff, the landing gear did not retract. According to the crew, all radios were inoperative and the overhead panel was blank. The pilots leveled the aircraft at their first assigned altitude of 2,500 feet, elected to return to the field, and landed at EWR<sup>2</sup> with several aircraft systems inoperative, including the airplane's transponder, the traffic alert and collision avoidance system, and the standby attitude indicator.<sup>3</sup> The crew later reported that the indicator (which, according to Airbus, is designed to function for about 5 minutes after it loses power) stopped functioning while the aircraft was on the downwind leg of the approach for landing.

After landing, the flight crewmembers observed that the "AC ESS FEED" pushbutton on the overhead panel had an illuminated fault indication for the AC 1 electrical bus.<sup>4</sup> Both crewmembers stated that this fault indication was not illuminated in flight. They then manually selected the AC essential electrical bus feed to "alternate,"<sup>5</sup> which reconfigured the power supply. After this selection, the captain's instruments, as well as most of the failed aircraft systems resumed functioning.

## **D. DETAILS OF THE INVESTIGATION**

### **1.0 Electrical System**

A description of the A320 electrical system is contained in appendix A. Appendix A is the complete report prepared by the United Kingdom's Air Accidents Investigation Branch (AAIB) regarding an incident that was very

---

<sup>1</sup> The ECAM system automatically displays messages and system diagrams to pilots. It provides operational assistance for both normal and abnormal airplane operational situations.

<sup>2</sup> Because the pilots were not able to communicate with air traffic control (ATC) when they returned to EWR, they began flying a regular landing pattern and hoped ATC would recognize what they were doing. ATC did notice and cleared a path allowing the airplane to land.

<sup>3</sup> The standby attitude indicator is designed to provide aircraft attitude information to the crew in the event that the primary attitude indicators are inoperative. This indicator is normally powered by the DC essential bus, which in turn is supplied by the AC essential bus.

<sup>4</sup> The primary sources of electrical power for the A320, AC 1 and AC 2 use several electrical busses to distribute power throughout the airplane. In its normal configuration, the AC 1 electrical bus provides power to the AC essential bus, the DC essential bus, and DC 1 bus (power is provided to the DC electrical busses after first passing through a transformer-rectifier (TR) unit.) The auxiliary power unit and air driven emergency generator can also provide limited aircraft electrical power under some conditions.

<sup>5</sup> When a fault is detected in the AC 1 electrical bus (or it stops providing power), the other busses can be powered by an alternate configuration, which entails selecting the AC 2 electrical bus to provide power. The alternate reconfiguration of the electrical system must be performed manually by the flight crew and is accomplished by activating a pushbutton switch located on the overhead panel.

similar to this United event. The description of the A320 electrical system contained in that report is also accurate for the purposes of this report.

## 1.1 Maintenance Actions Accomplished During Initial Troubleshooting

According to United Airlines, the following maintenance activities took place after the aircraft landed.

January 25, 2008

The following is the exact log item generated by the crew of 731:  
0216031 28JAN EWR#ACP :AFTER TAKEOFF, COMPLETE ELECTRICAL FAILURE WITH LOSS OF COMMUNICATION AND INSTRUMENTS. GEAR COMMANDED TO RETRACT AND DID NOT. F-O'S PFD POWERED BUT NO AIRSPEED OR AIR DATA INDICATIONS. ON GROUND AC ESS FEED SELECTED TO ALTERNATE AND POWER RESTORED TO LEFT SIDE OF COCKPIT. RAT DID NOT DEPLOY WITH POWER LOSS AND RAT FAULT DISPLAYED ON ECAM AFTER POWER RESTORED. SFOLM-PROWELL MAINT TEXT: IN ADDITION TO ABOVE TEXT, CREW ALSO STATED THAT THE STANDBY ATTITUDE INDICATOR STOPPED WORKING AND GOT A FLAG AND NEVER RETURNED TO NORMAL. :REF ALL OF THE FOLLOWING ITEMS ACCOMPLISHED FOR THIS REPAIR REF PPTS 0216001 THRU 0216030 .

The following is an excerpt from the statement given by the AMT that de-briefed the crew upon being towed back to gate 16:  
During de-briefing the crew explained that they suspected they lost #1 bus electrical power in flight just after takeoff. At the gate with the engines shut down and the APU<sup>6</sup> powering the aircraft the only display unit that showed data was the lower center display (lower ECAM) with multiple messages. Both MCDU<sup>7</sup>'s were also blank and on the electrical control panel (overhead) the "AC ESS FEED" switch "FAULT" light was illuminated. Selected to "ALTN" (AC ESS FEED switch) position and upper ECAM, center display recovered. I was unable to print a PFR<sup>8</sup>. Transferred power from APU to ground power released "BUS TIE" switch on electrical control panel and de-selected "AC ESS FEED" switch. When the "BUS TIE" switch was selected, Bus 1 recovered but with "TR1" fail message on ECAM. At panel 103VU I reset "TR1" with the TR switch (15pu). TR1 power was restored and all messages on ECAM cleared with the exception of "DC BUS TIE" message on lower ECAM status page. With electrical power restored, I was able to print a PFR and view the last leg report on CFDS<sup>9</sup>.

---

<sup>6</sup> APU: Auxiliary Power Unit

<sup>7</sup> MCDU: Multi-Function Control Display Unit

<sup>8</sup> PFR: Post Flight Report

<sup>9</sup> CFDS: Centralized Fault Display System

United started work on two callouts, CH5654 and EG8050. CH5654 was to check the #1 integrated drive generator (IDG) pylon connector for signs of arcing. EG8050 was driven from TSM procedures 24-20-00-810-806. No defects were discovered. Call outs were issued to remove the PCMCIA card, flight data recorder, and voice recorder.

January 26, 2008

Working with engineering, United accomplished EG8050 again. This time a "Megger" was used providing the same results. At approx 15:00, United conducted another conference call. From this United was instructed to accomplish a hand over hand inspection of the #1 engine feeder cables. EG8055 and EG8056 covered the inspection that would be from the wing root to the IDG. EG8054 covered the feeder LUG check. The aircraft was de-paneled and the inspections were accomplished. No defects were noted.

January 27, 2008

All parties agreed to have the #1 IDG, bus tie contactor (BTC), and generator control unit (GCU) replaced. All parts would be held until further instructions. Prior to the call, while an AMT was accomplishing a transfer logic test, he pulled all 4 TR breakers at once. The TR's failed to reset as a result of this action. The aircraft would only maintain power on the #1 bus. After a period of trouble shooting, relays 30XU2 and 4XU2 were replaced with no help. A manual reset was performed on the TR's at panel 103VU and the complete system restored.

The IDG, GCU, and BTC were replaced on EG8065, EG8064, and EG8062.

January 28, 2008

EG8058, EG8067, EG8066 were issued to accomplish operational checks on the system. All operational checks were performed with-out defects. A engineering flight crew arrived and performed their ground test. The aircraft had a normal departure and landed safety in IAD at 16:49 with no electrical defects.

The IDG and GCU were sent via FEDEX to Hamilton Sundstrand.

## 1.2 Component Examinations

### 1.2.1 Integrated Drive Generator and Generator Control Unit

The IDG and GCU were both examined by their manufacturer, Hamilton Sundstrand in Rockford, IL. The part number and serial numbers were as follows:

### GCU

Part Number 740120C

Serial Number 6819

### IDG

Part Number 766219

Serial Number 0111

Both the IDG and the GCU were placed on the systems test bench and subjected to loading conditions representative of the conditions that existed at the time of the incident. The units were monitored for any signs of adverse performance. The units both completed the test series with no faults found. In addition, the IDG was removed from the test bench and subjected to a production acceptance test procedure. No faults were found during this procedure. Finally, the IDG was partially disassembled to allow for the inspection of the major electrical components within the generator and, in particular, to look for any signs of an intermittent condition. No problems with the unit were noted during this inspection.

#### 1.2.2 Bus Tie Contactor

The BTC was examined in United's facility, and the part number and serial number information was found to be as follows:

Part Number 558 CA 01Y1

Serial Number 8239

United reported that the BTC was an original installation component that had not been into their shop environment prior to this examination. The part total time was approximately 27,021 hours and 9,982 cycles.

The unit was in good physical condition with no external damage observed. The unit was tested per OEM procedures. The unit met the requirements of these tests.

The lower cover was removed to access the movable and stationary contactors. The contactors showed some wear but not unusual (per shop personnel). The upper cover was also removed to access the alternate contactors. No defects were noted in these areas.

### 1.3 Service Bulletins and Airworthiness Directive

In response to previous incidents like this one, Airbus issued two service bulletins:

Service Bulletin SB A320-24-1120 was issued on May 31, 2007. This service bulletin provided for the automatic reconfiguration of the AC essential bus power supply in the event that the AC 1 electrical bus fails. Along with this service bulletin, Airbus released a Retrofit Information Letter (SEOT2/916.0083/08, revision 1, dated 28 January 2008). This letter stated that the modification kits required to accomplish SB A320-23-1120 were available from Airbus free of charge.

Service Bulletin SB A320-33-1057 was issued on May 11, 2007. This service bulletin provided for the modification of the supply logic for the standby horizon and the cockpit floodlight located under the glareshield so that they are supplied by the hot electrical bus. This is designed to insure that the standby horizon remains powered and illuminated in the event that the AC 1 electrical bus fails. The Federal Aviation Administration (FAA) incorporated the service bulletin's recommended actions into Airworthiness Directive AD-2009-01-04, effective February 27, 2009.

Scott Warren  
Lead Aerospace Engineer

Appendix A  
Air Accidents Investigation Branch (AAIB) Report 4/2009

**AIRCRAFT ACCIDENT REPORT 4/2009**

---

**Air Accidents Investigation Branch**

---

**Department for Transport**

---

**Report on the serious incident to  
Airbus A319-111, registration G-EZAC  
near Nantes, France  
on 15 September 2006**

---

This investigation was carried out in accordance with  
*The Civil Aviation (Investigation of Air Accidents and Incidents) Regulations 1996*

The sole objective of the investigation of an accident or incident under these Regulations shall be the prevention of accidents and incidents. It shall not be the purpose of such an investigation to apportion blame or liability.

© *Crown Copyright 2009*

Published with the permission of the Department for Transport (Air Accidents Investigation Branch).

This report contains facts which have been determined up to the time of publication. This information is published to inform the aviation industry and the public of the general circumstances of accidents and serious incidents.

Extracts may be published without specific permission providing that the source is duly acknowledged.

Published 24 August 2009

**Printed in the United Kingdom for the Air Accidents Investigation Branch**

**Department for Transport  
Air Accidents Investigation Branch  
Farnborough House  
Berkshire Copse Road  
Aldershot  
Hampshire GU11 2HH**

July 2009

***The Right Honourable Lord Adonis  
Secretary of State for Transport***

Dear Secretary of State

I have the honour to submit the report by Mr Richard Ross, an Inspector of Air Accidents, on the circumstances of the serious incident to Airbus A319-111, registration G-EZAC near Nantes, France on 15 September 2006.

Yours sincerely

**David King**  
Chief Inspector of Air Accidents



---

**Contents**

<b>Synopsis.....</b>	<b>1</b>
<b>1 Factual Information .....</b>	<b>3</b>
1.1 History of the flight .....	3
1.1.1 Recent maintenance activity .....	3
1.1.2 Flight from London Stansted to Alicante, Spain.....	3
1.1.3 The incident flight.....	4
1.2 Injuries to persons .....	8
1.3 Damage to aircraft.....	8
1.4 Other damage .....	8
1.5 Personnel information .....	9
1.5.1 Commander.....	9
1.5.2 Co-pilot .....	9
1.6 Aircraft information .....	10
1.6.1 General information.....	10
1.6.2 Electronic Instrument System.....	10
1.6.2.1 Display Units .....	10
1.6.2.2 Electronic Flight Instrument System .....	11
1.6.2.3 Electronic Centralised Aircraft Monitoring system ....	11
1.6.2.4 Display Management Computers.....	13
1.6.2.5 Electronic Instrument System Power Supplies .....	14
1.6.3 Aircraft Electrical Power System .....	14
1.6.3.1 General.....	14
1.6.3.2 Electrical Power Sources .....	15
1.6.3.3 Electrical Power Generation Control and Indication ..	15
1.6.3.4 System Configuration.....	16
1.6.3.5 Electrical Power Distribution.....	18
1.6.3.6 GCU - Generator Control Unit .....	20
1.6.3.7 GCU Differential Protection .....	21
1.6.3.8 GCU Welded GLC Protection.....	22
1.6.3.9 Ground Power/APU Generator Control Unit.....	23
1.6.3.10 System Test and Fault Monitoring.....	23
1.6.4 Other Relevant Aircraft Systems .....	24
1.6.4.1 Laptop tool.....	24
1.6.4.2 APU.....	24
1.6.5 Minimum Equipment.....	24

---

1.6.6	Effects on aircraft systems of AC BUS 1 and AC ESS busbar loss ....	25
1.6.6.1	General .....	25
1.6.6.2	Electronic Instrument System .....	26
1.6.6.3	Hydraulic system .....	26
1.6.6.4	Air Data and Inertial Reference System .....	26
1.6.6.5	Flight controls .....	26
1.6.6.6	Landing gear .....	27
1.6.6.7	Cabin pressurisation.....	27
1.6.6.8	Oxygen systems .....	27
1.6.6.9	VHF radio .....	28
1.6.6.10	ATC transponder .....	28
1.6.6.11	Traffic Alert and Collision Avoidance System.....	29
1.6.6.12	Enhanced Ground Proximity Warning System .....	29
1.7	Meteorological information .....	29
1.8	Aids to navigation .....	29
1.9	Communications .....	30
1.9.1	Air Traffic Control .....	30
1.9.1.1	Incident flight .....	30
1.9.1.2	Reports from Brest ATCC radar controllers.....	30
1.9.2	ACARS .....	31
1.9.3	Telephone.....	32
1.9.4	Procedures for loss of radio communication .....	32
1.10	Aerodrome information.....	32
1.11	Flight Recorders.....	32
1.11.1	CVR .....	33
1.11.2	FDR.....	33
1.11.3	Pre-flight MEL procedure .....	33
1.11.4	Incident flight from Alicante to Bristol.....	34
1.11.4.1	Effects on aircraft systems .....	34
1.11.4.2	No 2 Bus Tie Contactor operation .....	35
1.11.5	Radar recordings .....	35
1.11.6	Flight Recorder improvements .....	35
1.11.6.1	Recorder Independent Power Supply.....	35
1.11.6.2	Cockpit Image Recording .....	37
1.12	Aircraft Examination.....	38
1.12.1	Initial .....	38
1.12.2	Fault and Troubleshooting Data.....	38
1.12.3	Aircraft Inspection .....	39

---

---

1.12.4	Aircraft Checks .....	40
1.12.5	Component Checks .....	41
1.12.5.1	General .....	41
1.12.5.2	Generator Control Unit No 1 .....	41
1.12.5.3	Ground and Auxiliary Power Control Unit .....	42
1.13	Medical and pathological information .....	42
1.14	Fire .....	42
1.15	Survival aspects .....	42
1.16	Tests and research .....	43
1.17	Organisational and management information .....	43
1.18	Additional information .....	43
1.18.1	Aircraft certification standards .....	43
1.18.1.1	System failure analysis .....	43
1.18.1.2	Manufacturer's failure analysis .....	44
1.18.2	EPGS failure assessment .....	45
1.18.3	Generation control panel push-button switches .....	45
1.18.4	G-EZAC Electrical Power Generation System history .....	45
1.18.5	GCU/GAPCU overhaul and repair .....	47
1.18.6	Other A320-series electrical system disturbance events .....	48
1.18.6.1	General .....	48
1.18.6.2	Airbus A319, Registration G-EUOB .....	48
1.18.6.3	Airbus A321, Registration G-OZBE .....	49
1.18.6.4	Airbus A320-Series aircraft, US-Registered .....	50
1.18.7	Electrical System improvements .....	50
1.18.7.1	Automatic transfer of AC ESS busbar feed .....	50
1.18.7.2	GCU logic .....	50
1.18.7.3	VHF radio system power supplies .....	52
1.19	New investigation techniques .....	53
<b>2</b>	<b>Analysis .....</b>	<b>54</b>
2.1	Operational aspects .....	54
2.1.1	Crew qualifications, experience and training .....	54
2.1.2	Aircraft dispatch for the incident flight .....	54
2.1.3	Effects of the failure .....	54
2.1.4	AC Essential busbar loss indication .....	56
2.1.5	AC ESS FEED changeover selection .....	56
2.1.6	AC ESS FEED push-button selector .....	57

---

2.1.7	Radio communication .....	57
2.1.8	Potential for collision.....	58
2.2	Electrical Power Generation System.....	59
2.2.1	Electrical Power Generation System behaviour .....	59
2.2.1.1	Electrical power disruption .....	59
2.2.1.2	Cause of AC BUS 1 loss .....	59
2.2.1.3	No 1 Generator Control Unit defect.....	60
2.2.2	Master Minimum Equipment List.....	60
2.2.3	Electrical Power Generation System Background.....	61
2.2.3.1	Aircraft maintenance background.....	61
2.2.3.2	No 1 Generator Control Unit background .....	62
2.2.3.3	GAPCU defect .....	62
2.2.4	Electrical Power Generation System improvement .....	63
2.2.4.1	Monitoring improvements .....	63
2.3	Airworthiness Considerations .....	64
2.3.1	Failure Modes and Effects Analysis .....	64
2.4	Flight recorders .....	64
2.4.1	Recorder technology .....	64
2.4.1.1	CVR power supply.....	64
2.4.1.2	Cockpit image recording.....	65
<b>3</b>	<b>Conclusions .....</b>	<b>66</b>
3.1	Findings.....	66
3.2	Causal factors.....	68
<b>4</b>	<b>Safety Recommendations.....</b>	<b>69</b>

## Appendix

Appendix 1	Effects on Aircraft Systems of Loss of AC BUS 1, AC ESS and DC ESS busbars
------------	----------------------------------------------------------------------------

## GLOSSARY OF ABBREVIATIONS USED IN THIS REPORT

A	Ampere	EFIS	Electronic Flight Instrument System
AAIB	Air Accidents Investigation Branch	EGPWS	Enhanced Ground Proximity Warning System
AC	Alternating Current	EIS	Electronic Instrument System
ACARS	Aircraft Communications Addressing and Reporting System	ELAC	Elevator and Aileron Computer
ACP	Audio Control Panel	EPGS	Electrical Power Generation System
ADD	Acceptable Deferred Defect	EEPGS	Enhanced Electrical Power Generation System
ADIRS	Air Data and Inertial Reference System	ESS	Essential
ADIRU	Air Data and Inertial Reference Unit	ETOPS	Extended Twin Operations
AIP	Aeronautical Information Publication	EUROCAE	European Organisation for Civil Aviation Equipment
AMU	Audio Management Unit	EWD	Engine/Warning Display
APU	Auxiliary Power Unit	FAA	Federal Aviation Administration
ALTN	Alternate	FC	Fault Code
ATC	Air Traffic Control	FCOM	Flight Crew Operating Manual
ATCC	Air Traffic Control Centre	FDIMU	Flight Data Interface Management Unit
BATT	Battery	FDM	Flight Data Monitoring
BEA	Bureau d'Enquêtes et d'Analyses pour la Sécurité de l'Aviation Civile	FDR	Flight Data Recorder
BITE	Built-In Test Equipment	FIN	Functional Item Number
BRT/DIM	Bright/Dim	FL	Flight Level
BSCU	Brake and Steering Control Unit	FMGS	Flight Management and Guidance System
BTC	Bus Tie Contactor	FMS	Flight Management System
CAA	Civil Aviation Authority	ft	feet
CAM	Cockpit Area Microphone	GAPCU	Ground and Auxiliary Power Control Unit
CFDIU	Centralised Fault Display Interface Unit	GEN	Generator
CFDS	Centralised Fault Display System	GCU	Generator Control Unit
CPC	Cabin Pressure Controller	GCR	Generator Control Relay
CT	Current Transformers	GLC	Generator Line Contactor
CVR	Cockpit Voice Recorder	GPU	Ground Power Unit
DC	Direct Current	hr(s)	hour(s)
DGAC	Direction Générale de l'Aviation Civile	Hz	Hertz
DMC	Display Management Computer	ICAO	International Civil Aviation Authority
DP	Differential Protection	IDG	Integrated Drive Generator
DU	Display Unit	IFR	Instrument Flight Rules
EASA	European Aviation Safety Agency	ILS	Instrument Landing System
EAT	Estimated Arrival Time	kg	kilogram(s)
ECAM	Electronic Centralised Aircraft Monitor	kt	knot(s)
ECP	ECAM Control Panel	kVA	kilo Volt-Ampere
		lb	pound
		LRU	Line-Replaceable Unit

## GLOSSARY OF ABBREVIATIONS USED IN THIS REPORT (Cont)

m	metre	QAR	Quick Access Recorder
MCDU	Multi-purpose Control and Display Unit	QNH	Atmospheric Pressure referred to mean sea level
METAR	Actual recorded weather at a specified location	QRH	Quick Reference Handbook
MMEL	Master Minimum Equipment List	RAT	Ram Air Turbine
MEL	Minimum Equipment List	RIPS	Recorder Independent Power Supply
ms	millisecond	RMP	Radio Management Panel
MSN	Manufacturer's Serial Number	RTF	Radio Telephony
MTOW	Maximum Takeoff Weight	SB	Service Bulletin
N <sub>1</sub>	Engine low pressure spool rotational speed	SDAC	System Data Acquisition Concentrator
NATS	UK National Air Traffic Service	SEC	Spoiler and Elevator Computer
ND	Navigation Display	SN	Serial Number
NFF	No Fault Found	SRAM	Static Random Access Memory
NITS	Nature, Intention, Time, Special Instructions	SSR	Secondary Surveillance Radar
nm	nautical mile(s)	SVR	Servo Valve Relay
NVM	Non-Volatile Memory	TCAS	Traffic alert and Collision Avoidance System
OIT	Operators' Information Telex	TR	Transformer Rectifier
PA	Public Address	TR	FCOM Temporary Revision
PF	Pilot Flying	TSD	Trouble Shooting Data
PFD	Primary Flight Display	UK	United Kingdom
PFR	Post Flight Report	UTC	Universal Co-ordinated Time
PMG	Permanent Magnet Generator	V	Volt
PN	Part Number	VHF	Very High Frequency
PRR	Power Ready Relay	VMC	Visual Meteorological Conditions

**Air Accidents Investigation Branch****Accident Report No:** 4/2009 (EW/C2006/9/4)**Registered Owner and Operator:** EasyJet Airline Company Limited**Aircraft Type and Model:** Airbus A319-111**Registration:** G-EZAC**Manufacturer's Serial Number** 2691**Place of Incident:** Near Nantes, France at FL320**Date and Time:** 15 September 2006 at 1052 hrs.  
(All times in this report are UTC, unless otherwise stated).**Synopsis**

The serious incident occurred to an Airbus A319-111 aircraft operating a scheduled passenger flight between Alicante, Spain and Bristol, UK. The aircraft had experienced a fault affecting the No 1 (left) electrical generator on the previous flight and was dispatched on the incident flight with this generator selected off and the Auxiliary Power Unit generator supplying power to the left electrical network.

While in the cruise at Flight Level (FL) 320 in day Visual Meteorological Conditions (VMC), with the autopilot and autothrust systems engaged, a failure of the electrical system occurred which caused numerous aircraft systems to become degraded or inoperative. Some of the more significant effects were that the aircraft could only be flown manually, all the aircraft's radios became inoperative and the Captain's electronic flight instrument displays blanked.

Attempts by the flight crew to reconfigure the electrical system proved ineffective and the aircraft systems remained in a significantly degraded condition for the remainder of the flight, making operation of the aircraft considerably more difficult. The flight crew were unable to contact air traffic control for the rest of the flight. The aircraft landed uneventfully at Bristol, with the radios and several other systems still inoperative.

The incident was reported to the Air Accidents Investigation Branch (AAIB) by the operator at 1452 hrs local on 15 September 2006. An investigation was commenced shortly thereafter. France, as the state of aircraft manufacture and design, appointed an Accredited Representative from the BEA<sup>1</sup>. Assistance was also given by the aircraft manufacturer, Airbus.

---

<sup>1</sup> Bureau d'Enquêtes et d'Analyses pour la Sécurité de l'Aviation Civile, the French equivalent of the AAIB.

The reasons why the electrical system could not be reconfigured by the flight crew could not be established.

The investigation identified the following causal factors in this incident:

1. An intermittent fault in the No 1 Generator Control Unit, which caused the loss of the left electrical network
2. An aircraft electrical system design which required manual reconfiguration of the electrical feed to the AC Essential busbar in the event of de-energisation of the No 1 AC busbar, leading to the loss or degradation of multiple aircraft systems, until the electrical system is reconfigured
3. The inability of the flight crew to reconfigure the electrical system, for reasons which could not be established
4. Master Minimum Equipment List provisions which allowed dispatch with a main generator inoperative without consideration of any previous history of electrical system faults on the aircraft
5. Inadequate measures for identifying Generator Control Units repeatedly rejected from service due to repetition of the same intermittent fault

Preliminary information on the progress of the investigation was published in AAIB Special Bulletin S9/2006 on 13 December 2006 and four Safety Recommendations were made. Ten additional Safety Recommendations are made in this report.

## **1 Factual Information**

### **1.1 History of the flight**

#### **1.1.1 Recent maintenance activity**

On 14 September 2006, the day before the incident, the No 1 engine-driven electrical generator reportedly tripped off-line during flight. Corrective maintenance was performed on the aircraft overnight at London Stansted. This included the replacement of the No 1 Generator Control Unit (GCU 1), followed by an engine ground run and electrical system checks. During the ground run the No 1 generator again tripped off-line but was reset satisfactorily. The aircraft was declared serviceable and released for service.

#### **1.1.2 Flight from London Stansted to Alicante, Spain**

The aircraft was scheduled to operate from London Stansted to Alicante on 15 September and then, following a crew change, to operate from Alicante to Bristol.

The aircraft took off from London Stansted at 0526 hrs. About 20 minutes into the flight the pilots heard a 'clunk', the 'ELEC GEN 1 FAULT' message appeared on the Electronic Centralised Aircraft Monitor (ECAM) and a FAULT caption illuminated on the overhead panel. The crew checked the Electrical System page on the ECAM and confirmed that the No 1 generator had tripped off-line. They then carried out the ECAM actions, which required one attempt to reset the generator; this was unsuccessful so the No 1 generator was selected OFF, in accordance with the procedure. The Auxiliary Power Unit (APU)<sup>1</sup> was started and its electrical generator supplied the left electrical network.

The commander then contacted the operator's maintenance control organisation through the Aircraft Communications Addressing and Reporting System (ACARS)<sup>2</sup>. He informed them of the nature of the failure and asked whether or not the flight should be continued to Alicante. The response was that the flight should continue, as the aircraft could be dispatched by the next crew under the provisions of the operator's Minimum Equipment List (MEL). The MEL allowed dispatch of the aircraft with one main generator inoperative, subject to certain operational procedures being carried out before flight. Additionally, the cruise level was restricted to a maximum of FL335 and the APU was

<sup>1</sup> The APU is a constant-speed gas turboshaft engine mounted in the tail of the aircraft. It can be selected to provide electrical power and compressed air for the aircraft's systems.

<sup>2</sup> ACARS is a datalink system for the transmission of messages between aircraft and ground stations via radio or satellite.

required to be operating throughout the flight. The commander requested that an engineer meet the aircraft on arrival in Alicante because a different crew was to operate the next sector.

The aircraft was met by an engineer in Alicante who made an entry in the Aircraft Technical Log for the No 1 generator problem and raised an Acceptable Deferred Defect (ADD) allowing the aircraft to continue in service with the defect, in accordance with the MEL. No maintenance action was performed, as none was specified in the MEL procedure.

### 1.1.3 The incident flight

The pilots who were to operate G-EZAC from Alicante to Bristol were informed via an ACARS message whilst en route to Alicante that the aircraft they would be operating for the return sector had a No 1 generator problem. The pilots reviewed the MEL, noting the requirements for dispatch. When the two flight crews changed over aircraft at Alicante, the respective commanders had a short discussion about the No 1 generator problem.

A flight plan was filed for FL320 for the flight from Alicante to Bristol and the commander asked for extra fuel to be uplifted, to allow for the additional fuel burn of the APU during the flight.

The following events were reported by the crew. G-EZAC departed Alicante at 0926 hrs, with a flight number and callsign of EZY6074, with the commander as the Pilot Flying (PF). The APU was running in accordance with the MEL requirements. The crew noted that the two discrete annunciation lights on the flight deck overhead panel associated with the APU operation were both on and that the GEN 1 OFF light was illuminated.

At 1052 hrs, while the aircraft was in the cruise at FL320 in the region of Nantes and under the control of Brest Air Traffic Control Centre (ATCC), the pilots heard a loud 'clunk' and a number of systems and services, including those listed below, became inoperative:

- Captain's Primary Flight Display (PFD) and Navigation Display (ND), the upper ECAM display and the Multi-purpose Control and Display Unit (MCDU)
- Autopilot; the associated aural Master Warning tone sounded
- Autothrust; the associated aural Master Caution tone sounded

- Most of the caption and integral illumination lights on the overhead panel

The commander's initial assumption was that either the APU had shut down or the APU generator had failed. He saw that his own electronic instrument displays had blanked and so, after checking that the co-pilot's instruments were available, handed over control. The co-pilot flew the aircraft manually, using manual thrust and without the flight director, which had disappeared. He noted that the aircraft flight control system had degraded to 'Alternate Law'<sup>3</sup>, as evidenced by the presence of amber crosses on his PFD.

The lower ECAM Display Unit (DU), which remained operative, should have displayed the following messages:

AUTO FLT AP OFF  
ENG 1 IGN A+B FAULT  
AVOID ADVERSE CONDITIONS  
ENG 2 EIU FAULT  
ELEC AC ESS BUS FAULT  
-AC ESS FEED.....ALTN  
-ATC ..... SYS 2

The commander carried out the ECAM actions but when he reached the 'AC ESS FEED' switch to 'ALTN' action, he reported that the FAULT caption in the push-button selector was not illuminated. He also noted that there were now no lights showing on the overhead panel, except for the ON BATT caption light on the Air Data and Inertial Reference System (ADIRS) panel. These observations by the commander were confirmed by the co-pilot, who was monitoring the ECAM actions.

The commander reported that he selected the AC ESS FEED push-button to ALTN, but this appeared to have no effect; the push-button selector switch caption remained unlit and the electrical system failed to reconfigure. He stated that he was unable to verify the selection made on the switch (ALTN or NORMAL), because the button does not remain depressed after making a selection.

The commander observed that the lights and digits on his Radio Management Panel (RMP) had disappeared and that both of the Audio Control Panels (ACPs) on the centre pedestal were unlit. He tried to contact ATC using his

---

<sup>3</sup> Alternate Law is a mode of the flight control system in which certain protection features are unavailable.

RMP and the VHF 1 radio, but received no response. He tried again using the VHF 2 radio, but once again there was no response. He then tried transmitting a MAYDAY on the Brest ATCC frequency and on the distress frequency, 121.50 MHz, using VHF 1 and 2 radios, but received no reply. The co-pilot attempted the same using RMP 2, but this also proved unsuccessful. The commander then tried switching to ACP 3 using the audio switching system but was still unable to re-establish communications with Brest ATCC.

The ATC transponder panel was also unlit and the digits had disappeared. One of the ECAM actions was to switch from the No 1 to the No 2 transponder system, ATC 2. The digits on the transponder then reappeared, but as the transponder panel remained unlit, there was no unambiguous confirmation that it was operational again. The pilots decided to select the emergency code 7700, because the aircraft was in a degraded state, with only one electrical generator remaining online, a significant number of systems inoperative or degraded and no radio communication. About 10 minutes had elapsed from the start of the incident until the commander selected the No 2 transponder system; no transponder signal was transmitted by the aircraft during this period.

One of the further ECAM actions was to select the No 1 generator to OFF, then to ON, using the No 1 generator push-button selector switch on the overhead panel. The commander did this but there was no response, so he selected the switch back to OFF. He commented that as there were no captions illuminated in the button and the button did not change position significantly between settings, he was unable to verify the switch selection.

The commander then reviewed the ECAM systems pages; this required the use of the 'ALL' button on the ECAM Control Panel (ECP). The electrical page showed the No 1 generator with zero output and several busbars in amber, indicating that they were unpowered. These included the AC ESS and DC ESS busbars. The hydraulics page showed amber crosses where the system pressures were normally displayed. There was an ECAM message 'CAB PR SYS 1+2 FAULT', which prompted the commander to look at the pressurisation page but, not seeing any abnormal indications, he left the cabin pressurisation control system in the automatic mode.

The commander thought that either the APU or its generator had failed and caused the loss of electrical power. He attempted a reset by shutting down and restarting the APU, but this had no effect on the electrical system.

At this stage the commander reviewed the actions taken so far, including a review of the ECAM messages using the 'RECALL' button on the ECP. He reported that he operated the AC ESS FEED switch once again but it still produced no effect. He noticed on the hydraulic system page that the Ram Air Turbine (RAT) displayed a green triangle, indicating that the RAT was operating, although it had not actually deployed.

The commander used the Passenger Address system to ask the senior cabin crew member to come to the flight deck. He explained the situation to her and gave her a precautionary emergency (NITS) briefing. He called her again later to confirm it was an emergency.

The commander sought guidance on the landing performance of the aircraft in its degraded condition. As he was unsure which systems were still available, he consulted the Quick Reference Handbook (QRH)<sup>4</sup> and checked the figures for the worst case available, the Emergency Electrical configuration. Given the prevailing conditions (based on their latest received weather report) and that the aircraft was not actually in the Emergency Electrical configuration, Runway 09 at Bristol was considered to be of sufficient length. He also reviewed the QRH to see if the 'DUAL ELECTRICAL FAILURE' procedure would be appropriate, but decided it would not.

The pilots discussed the various options for continuing the flight. They were concerned that they might be intercepted by military aircraft, because of the loss of radio communications and that, given the aircraft's degraded status, they might not be able to follow an interceptor or land at another airfield. Furthermore, they were concerned that if they deviated from the flight-planned route to divert to an en route airfield it might be considered a hostile action, which could lead to offensive measures being taken against their aircraft. The pilots had already received the weather forecast for Bristol, which was favourable, and realised that they would not be able to obtain weather information if they diverted. The commander thus decided that the best course of action was to continue to Bristol.

The co-pilot continued as PF for the remainder of the flight. He noticed that the flight deck became unusually cold and reported feeling 'light-headed'. Both pilots considered using their oxygen masks but decided that it was not necessary. The commander successfully programmed the arrival in the Flight Management System (FMS) and the aircraft was descended according to the usual arrival profile for an approach into Bristol, complying with the normal

---

<sup>4</sup> This contains flight crew procedures for dealing with abnormal conditions.

constraints. Normal Instrument Landing System (ILS) indications were displayed on the co-pilot's PFD.

The commander made several attempts to contact ATC by mobile telephone, using two different handsets, but this was unsuccessful, even at a fairly low altitude.

The initial flap setting was selected earlier than usual because the pilots had some doubts about the status of the hydraulic system but the flaps deployed normally. When the commander selected the landing gear down, none of the gear indicator lights illuminated and there was no accompanying sound of landing gear deployment. He used the emergency gear extension system to extend the landing gear by gravity.

Full flap was used for landing and after touchdown heavy manual braking was applied. The aircraft stopped quickly. It was taxied to a parking stand, where a normal shutdown was attempted, but the engines continued to run after the master switches were selected off. The commander succeeded in shutting them down using the engine fire switches.

Ground personnel reported that the APU was running when the aircraft arrived on stand and that it continued to do so after engine shutdown. Subsequent attempts by maintenance personnel to bring the APU generator online to provide electrical power were unsuccessful.

## **1.2 Injuries to persons**

	Crew	Passengers	Others
Fatal	-	-	-
Serious	-	-	-
Minor	-	-	-
None	6	138	-

## **1.3 Damage to aircraft**

The aircraft was not damaged.

## **1.4 Other damage**

None.

**1.5 Personnel information****1.5.1 Commander**

Male, age 42 years

Licence: Airline Transport Pilot's Licence

Aircraft ratings: Airbus A320-series, Boeing 737

Licence Proficiency Check: Valid to 31 March 2007

Operational Proficiency Check: Valid to 31 March 2007

Annual Line Check: Valid to 30 April 2007

Medical Certificate: Class 1 Valid

Flying Experience: Total - 8,800 hours (of which 393 were on type)

Last 90 days 211 hours

Last 28 days 77 hours

Last 24 hours 12 hours

Previous rest period - 13 hours

**1.5.2 Co-pilot**

Male, age 34 years

Licence: Airline Transport Pilot's Licence

Aircraft ratings: Airbus A320-series, BAe Jetstream 41

Licence Proficiency Check: Valid to 31 January 2007

Operational Proficiency Check: Valid to 31 January 2007

Annual Line Check: Valid to 31 March 2007

Medical Certificate: Class 1 Valid

Flying Experience: Total - 3,208 hours (of which 560 were on type)

Last 90 days 242 hours

Last 28 days 79 hours

Last 24 hours 5 hours

Previous rest period - 14.5 hours

The pilots reported for the flight at 0445 hrs and at the time of the incident had been on duty for 6 hours and 7 minutes.

## 1.6 Aircraft information

### 1.6.1 General information

Manufacturer:	Airbus SAS
Type:	A319-111
Aircraft Serial No:	MSN 2691 (Manufacturer's Serial Number)
Year of manufacture:	2006
Certificate of Registration:	Issued by the UK Civil Aviation Authority (CAA) on 16 February 2006
Certificate of Airworthiness:	Issued by the UK CAA on 16 February 2006, valid until 15 February 2008
Engines:	2 CFM56-5B5/P turbofans
Total airframe hours:	1,962 hours
Total airframe cycles:	1,428 flight cycles
Last Maintenance Check	'E03' Check on 4 August 2006

G-EZAC's certificated Maximum Takeoff Weight (MTOW) was 66,000 kg (145,510 lb). The fuel on board at departure from Alicante was 8,000 kg and on landing at Bristol was 2,300 kg.

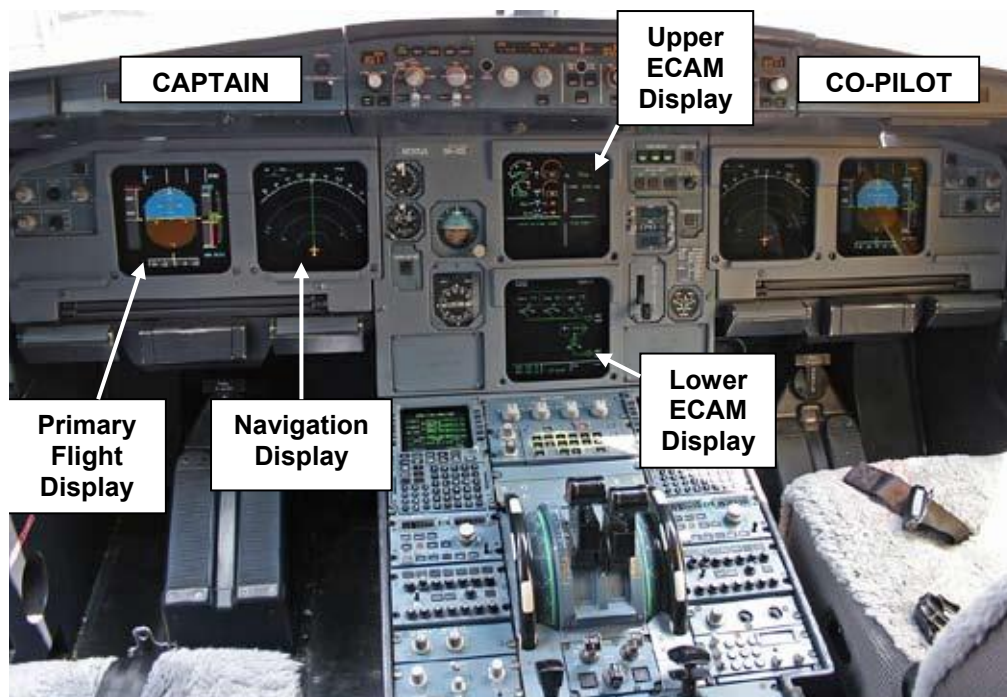
The A319 is a member of the A320 aircraft series, which includes the A318, A319, A320 and A321. It is of conventional layout, powered by two pylon-mounted engines, one under each wing. The A320 was the first of the series to be certificated; its Type Certificate was issued by the French Direction Générale de l'Aviation Civile (DGAC) in 1988. The other models are derivatives of the A320 and have a high degree of commonality. The A319 received its DGAC Type Certificate in 1996.

G-EZAC was maintained by the airline's own EASA-approved maintenance organisation, in accordance with EASA-145 Approved Maintenance Schedule 48-00204 Revision 011.

### 1.6.2 Electronic Instrument System

#### 1.6.2.1 Display Units

Information for the flight crew is presented primarily on an Electronic Instrument System (EIS), comprising six DUs on the flight deck forward panel, each with a liquid crystal screen. These include a PFD and a Navigation Display (ND) in front of each pilot and two ECAM displays located one above the other on the central part of the panel (Figure 1).



**Figure 1**

Electronic Flight Instrument System

#### 1.6.2.2 Electronic Flight Instrument System

The Electronic Flight Instrument System (EFIS) system consists of the captain's and co-pilot's PFDs and NDs. The PFDs present information on aircraft attitude, performance, flight path and autopilot modes. The NDs provide navigation, weather radar and Traffic alert and Collision Avoidance System (TCAS) information.

#### 1.6.2.3 Electronic Centralised Aircraft Monitoring system

The upper ECAM screen normally presents the 'Engine/Warning Display page'. This provides engine primary data, wing flap/slat positional data and ECAM warning, caution and memo messages. Following an aircraft systems failure, the inoperative systems are automatically listed on the lower part of the Engine/Warning Display, together with checklist actions to be carried out by the crew (Figure 2).



Figure 2

## ECAM Engine/Warning Display

The lower ECAM DU normally provides the 'System Display', which presents synoptic diagrams showing the status of various aircraft systems (Figure 3). A specific system page may be called up manually, by selection of the appropriate button on the ECP and will appear automatically following an aircraft system failure.

The ECAM display is controlled through the ECP, located on the centre pedestal directly below the ECAM displays. If the upper ECAM display fails, the information normally presented on it automatically transfers onto the lower ECAM display, replacing the system/status information. In this situation there is no automatic system page call up. To display a system page the 'ALL' button on the ECP has to be pressed; the pages will then cycle. To look at a specific page the ALL button must be held down.

For both the synoptic diagrams and the control panel captions, normal system conditions are displayed in green or white and abnormal conditions in amber. A number of fault conditions also cause the red Master Warning or amber Master Caution caption lights on the flight deck to illuminate and a continuous or single chime to sound. As noted, warning and caution messages should also appear on the ECAM.



**Figure 3**

#### ECAM Electrical Power Generation System Synoptic diagram

In the event of a system failure, each ECAM warning/caution/memo message or instruction must be read by the crew and actioned if required. As items are cleared, the list scrolls upwards on the screen and further messages appear, until the end of the list is reached.

The ECAM is a tool to enable the crew to take corrective action in the event of system failures. Further information about the nature of a failure is generally available to the crew from the Flight Crew Operating Manual (FCOM), time permitting. FCOM diagrams and text are presented in black and white only. On G-EZAC the FCOM was available electronically on a laptop computer.

#### 1.6.2.4 Display Management Computers

The DUs are driven by three identical Display Management Computers (DMCs), identified as DMC 1, 2 and 3. In the normal configuration, DMC 1 drives the captain's (left) PFD and ND and the upper and lower ECAM DUs; DMC 2 drives the co-pilot's (right) PFD and ND. DMC 3 is available as a backup and can be manually selected to replace DMC 1 or DMC 2. In the event of a DMC 1 failure, the lower ECAM DU will be automatically driven by DMC 2.

#### 1.6.2.5 Electronic Instrument System Power Supplies

The DUs require Alternating Current (AC) electrical power to drive the displays and Direct Current (DC) power for display switching. The captain's PFD and the upper ECAM displays are powered from the AC Essential busbar ('AC ESS') and the captain's ND from the AC ESS SHED busbar. The co-pilot's PFD and ND and the lower ECAM displays are powered from AC BUS 2.

DMC 1 is powered from the AC ESS busbar and DMC 2 from AC BUS 2. DMC 3 is normally powered from AC BUS 1 but, if DMC 3 is selected to feed the captain's DUs and AC BUS 1 de-energises, DMC 3's power supply automatically switches to the AC ESS busbar.

#### 1.6.3 Aircraft Electrical Power System

##### 1.6.3.1 General

The aircraft has extensive electrical services, fed from a series of busbars. (A busbar is an electrical conductor with a high current-carrying capacity from which multiple circuits can be fed.) The system broadly comprises two electrical networks, a left and a right, denoted No 1 and No 2 respectively. This nomenclature is also applied to the components of the systems. There is also a third network, called the 'Essential' (ESS) network, which is supplied by either No 1 or No 2 network and feeds the most critical aircraft systems. Each network has AC and DC portions.

No 1 and No 2 networks are normally independent of one another, so that the failure of one network should not adversely affect the other. The power supplies for flight-critical systems are for the most part segregated, with the aim that the loss of a single power source should not result in concurrent failures of systems necessary for continued safe flight.

The A320-series Electrical Power Generation System (EPGS) was designed by Hamilton Sundstrand. The system had been developed since initial aircraft certification, giving rise to two distinct configurations. The original is known as the 'Classic' system and the later standard as the 'Enhanced' EPGS (EEPGS). The overall configurations were similar, with the same layout of busbars and contactors. However, the IDG and the control units (GCU and GAPCU) were quite different, with additional monitoring and control functions incorporated for the EEGPS.

The EEPGS was introduced through Airbus Modification No 27140, which was certificated at the end of 1997. It became the basic production standard at MSN 2406; G-EZAC (MSN 2691) was therefore equipped with this system at aircraft build. The following description is for the Enhanced EPGS.

#### 1.6.3.2 Electrical Power Sources

The electrical system is powered primarily from AC sources (3-phase, 115/200 Volt (V) (line-neutral/line-line) at a frequency of 400 Hz. Two engine-driven generators, one mounted on each engine, normally power the system. Each generator is driven from the engine high-pressure spool via an engine accessory gearbox and an integrated hydro-mechanical speed regulator. The regulator transforms variable engine rotational speed into a constant-speed drive for the generator. The constant-speed drive and the generator together form an assembly known as an Integrated Drive Generator (IDG).

The system can also be supplied, either on the ground or in flight, by a generator driven by the APU. The IDGs and the APU generator each have a maximum output rating of 90 kVA (kilovolt-ampere). Each generator is individually capable of supplying the aircraft's electrical requirements, after automatic shedding of some galley loads. When parked, the aircraft can be fed from ground power supplies, commonly from a diesel-generator Ground Power Unit (GPU), connected to a socket located under the nose of the aircraft.

The DC portion of the system (28V) is fed primarily by Transformer Rectifiers (TR) powered from the AC system (200 ampere (A) maximum). Limited parts of the DC and AC essential systems can be supplied from two aircraft batteries (24V, 23 Ah (ampere-hour)). In the event of loss of both the AC BUS 1 and AC BUS 2 busbars in flight, vital services can be fed by an AC 5 kVA Emergency Generator which is driven by the RAT.

The RAT deploys either automatically, usually because of loss of both main AC busbars, or on manual selection. RAT deployment is indicated by a green icon on the ECAM hydraulic system page. However, this is also the default RAT indication when there is a loss of DC ESS power.

#### 1.6.3.3 Electrical Power Generation Control and Indication

Electrical power generation system operation is normally automatic. An electrical power control panel is located in the flight deck overhead panel (Figure 4).



**Figure 4**

Electrical Power Generation System control panel

The selectors on the panel consist of alternate-action push-button selector switches, whereby consecutive pushes cycle the switch between the ON and OFF settings. The physical position of the button does not change significantly between the two settings. Annunciator captions in each push-button illuminate to indicate the status or fault condition of the associated function. The controls include the AC ESS FEED push-button switch. If the AC ESS busbar is unpowered, a 'FAULT' legend in this button will illuminate and an ECAM action will be generated. The FAULT caption power supply is from the AC BUS 2 busbar.

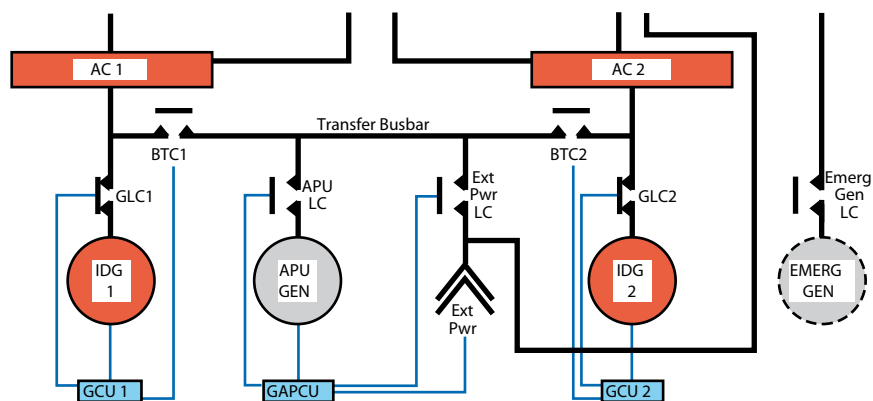
The brightness of the captions is controlled by a toggle switch elsewhere on the overhead panel with BRT/DIM (bright/dim) selections.

#### 1.6.3.4 System Configuration

In normal flight operation (Figure 5) the two sides of the electrical distribution system are segregated from each other, with each IDG feeding electrical power to an associated AC Main busbar (AC BUS 1 or AC BUS 2) via a Generator Line Contactor (GLC). Each IDG output can also feed a Transfer busbar, via a Bus Tie Contactor (BTC). With both IDG outputs present and both GLCs closed, the BTCs are automatically opened, thus isolating the IDGs from each other.

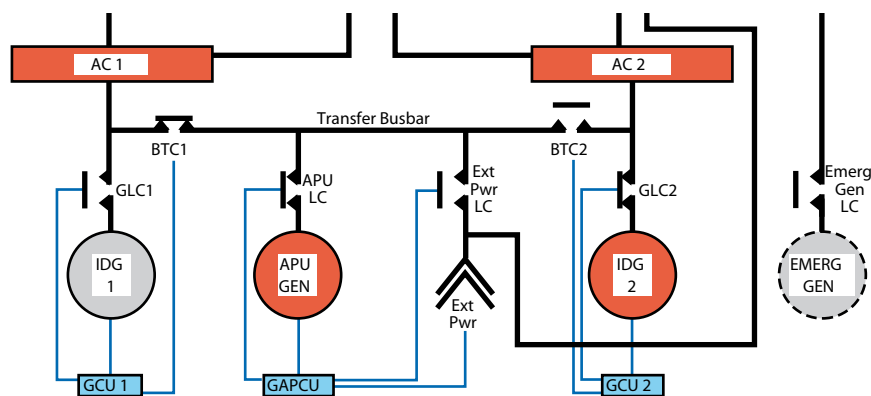
A GCU associated with each IDG monitors the IDG output and opens the GLC if it detects an out-of-limits condition, thus isolating the IDG from the electrical system. Manually selecting a 'GEN' switch on the EPGS control panel to OFF also de-excites the generator and opens the respective GLC.

In the normal flight configuration, the opening of a GLC automatically causes both BTCs to close, thus feeding both AC Main busbars from one IDG.

**Figure 5**

EPGS in normal configuration

However, if the APU generator output is available on the Transfer busbar it automatically supplies the AC Main busbar associated with the lost IDG output, via the respective BTC (Figure 6). In this situation the other BTC remains open, segregating the on-line IDG and APU outputs from each other. Monitoring and control of the APU generator output is by a combined Ground and Auxiliary Power Control Unit (GAPCU).

**Figure 6**

EPGS in G-EZAC dispatch configuration for incident flight

### 1.6.3.5 Electrical Power Distribution

The distribution system (Figure 7) consists of AC and DC busbars and sub-busbars. It includes the AC Essential busbar (AC ESS), normally powered from AC BUS 1; two DC Main busbars (DC BUS 1 and DC BUS 2), normally powered from AC BUS 1 and AC BUS 2 respectively via the TRs; and a DC Essential busbar (DC ESS), normally powered from DC BUS 1 via a DC Battery busbar (DC BAT). The AC and DC Essential busbars each supply an associated ESS SHED busbar. A HOT busbar is supplied directly from each battery. A HOT busbar is supplied directly from each battery.

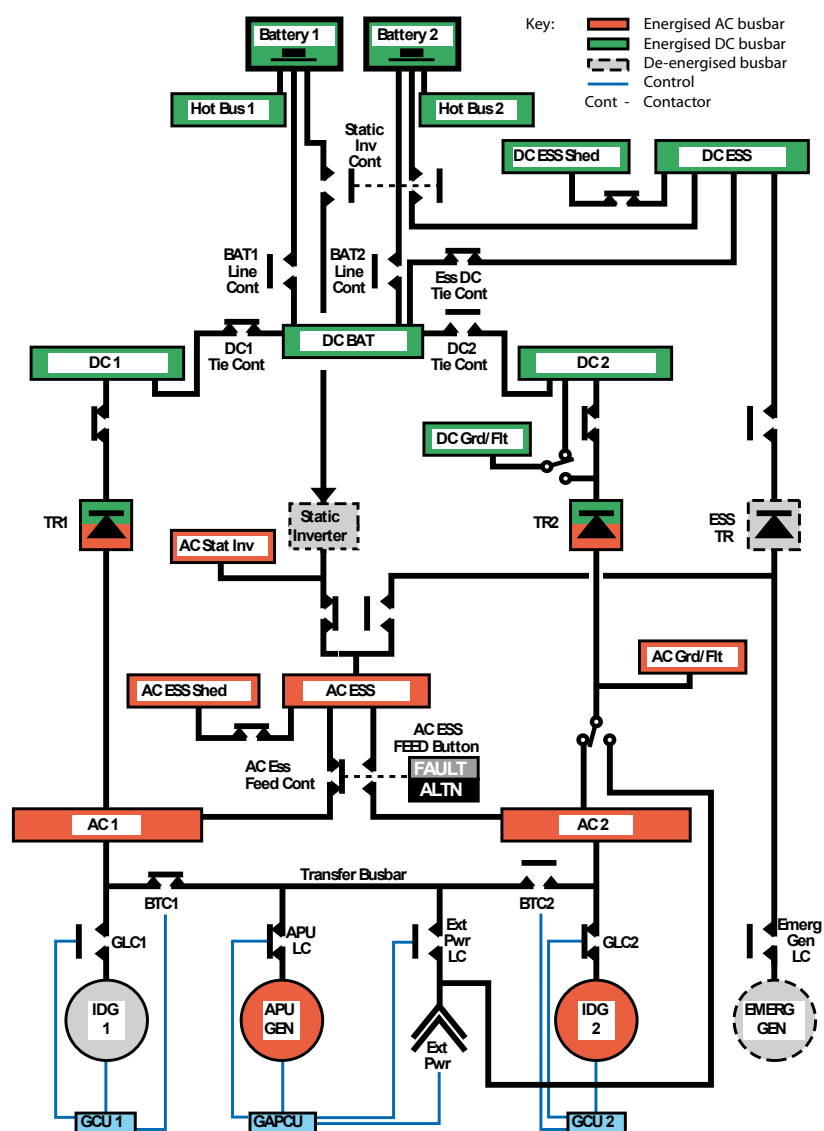
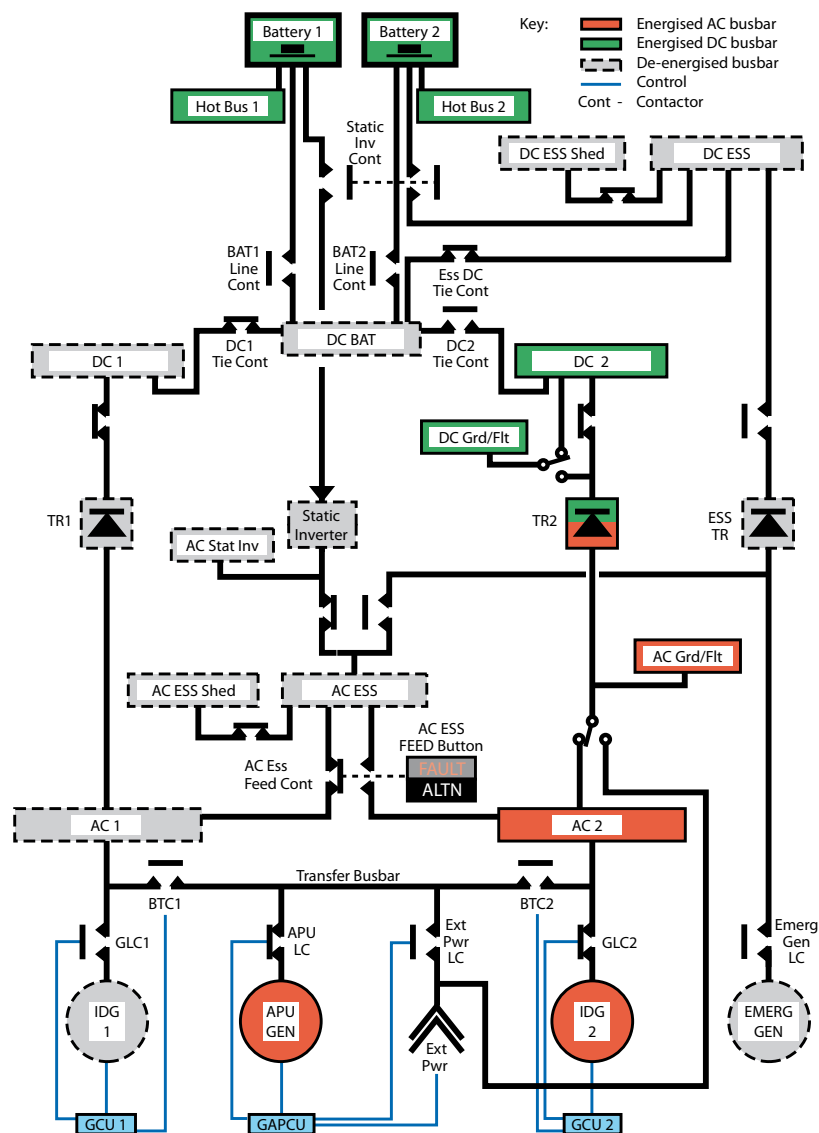


Figure 7

EPGS Distribution System - G-EZAC Dispatch Configuration shown

Thus, loss of AC BUS 1 results in loss of the AC ESS busbar, and also the loss of the AC ESS SHED busbar. As loss of AC BUS 1 de-powers TR 1, it also causes loss of the DC BUS 1 as well as loss of the DC ESS and DC ESS SHED busbars (Figure 8). After five seconds DC BUS 1 is automatically transferred to feed from DC BUS 2 via the DC BAT busbar, but it does not supply the DC ESS busbar.

Reinstatement of the AC ESS busbar and its sub-busbars following the loss of AC BUS 1 is automatic on newer Airbus types. On A320-series aircraft, however, this operation must be performed manually and appears as an ECAM



**Figure 8**

EPGS Distribution System – Immediately After Failure

action item following an electrical failure. Loss of the AC ESS busbar should cause the Master Caution to trigger, an 'AC ESS FAULT' warning message to appear on the ECAM DU and an amber 'FAULT' caption to illuminate in the 'AC ESS FEED' push-button selector switch on the EPGS control panel. Data from Airbus suggests that, following AC BUS 1 failure, a flight crew will typically take, on average, about one minute to restore power to the AC ESS busbar by selecting the AC ESS FEED switch. The crew of G-EZAC reported that they performed this action a number of times, but it did not result in power being restored to the AC ESS busbar.

Pushing the AC ESS FEED push-button should operate two changeover contactors to transfer supply of the AC ESS busbar to AC BUS 2 and to illuminate a white 'ALTN' caption in the push-button. This action should re-power the AC ESS and AC ESS SHED busbars. Additionally, the system should automatically reconfigure to power the DC ESS busbar from the AC ESS busbar via the Essential TR, thereby also restoring the DC ESS SHED busbar. Return of the normal feed to the AC ESS and DC ESS busbars would require reselection of the AC ESS FEED switch.

TR 1 registers the loss of its input power as a fault, which remains latched after TR 1 is re-energised. TR 1 can be reset using the flight deck MCDU, to resupply the DC BUS 1 busbar from AC BUS 1 but this can only be performed when the aircraft is on the ground.

#### 1.6.3.6 GCU - Generator Control Unit

The GCUs are digital microprocessor-based controllers, each consisting of an equipment box rack-mounted in the aircraft's forward electronics bay. The unit contains electrical and electronic components on five printed circuit boards. Its primary power supply is from a Permanent Magnet Generator (PMG) which forms the initial stage of the IDG. It is also fed with a backup power supply from the respective 28V DC Battery busbar.

The GCU functions include providing control and protection by monitoring and regulating both the output of the associated IDG and the operation of a number of the electrical distribution system contactors. It also stores information on electrical system status and feeds it to aircraft systems, and performs system testing and self-monitoring. G-EZAC's GCU software at the time of the incident was at Standard 5.1.

The EEPGS GCU model fitted to G-EZAC is also used on the other Airbus A320-series aircraft types and on A330 and A340-series aircraft. Different

software standards for the different aircraft models are determined by programming of the connector pins. The GCU is a 'Line-Replaceable Unit' (LRU), meaning that it is designed to enable easy replacement in the event of a suspected problem.

The GCU maintains the IDG output voltage and frequency within limits by modulating, respectively, the IDG field current and a servo valve in the constant-speed drive. It also performs 24 IDG and electrical system protection functions in the event of abnormalities, primarily by means of three relays within the GCU:

- A Generator Control Relay (GCR), controlling the generator excitation
- A Power Ready Relay (PRR), controlling the GLC
- A Servo Valve Relay (SVR), controlling the IDG rotational speed

One of the GCU's functions is to monitor the current in each phase at various points in the electrical system, as sensed by means of Current Transformers (CTs). These are effectively ammeters. Each of the three output leads (3-Phase output) from the IDG passes through a coil in the CT, inducing a secondary current in the coil. CTs are located, among other points, within the IDG at the IDG output and at the GLC input (Figure 9), providing 'IDG Current' and 'Line Current' measurement signals respectively. Within the GCU each CT signal is converted to a voltage, amplified and converted to a digital signal which is compared with a reference signal. The CT signals are used for a number of the protection functions.

#### 1.6.3.7 GCU Differential Protection

For one of its protection functions, known as 'Differential Protection' (DP), the GCU compares the IDG current with the line current in each phase, as sensed by the CTs. An excessive difference is assumed to be due to a short circuit, either between phases or to earth. The threshold is  $50 \pm 10$  A difference persisting for at least 80 milliseconds (ms).

If the threshold is exceeded, the GCU reacts by de-exciting the IDG and tripping the PRR, thus causing the GLC to open. A Built-In Test Equipment (BITE) message 'FC [Fault Code] 131 IDG GEN CT/GCU' is generated, signifying that a DP trip has occurred. In the normal situation with the electrical networks

Note:

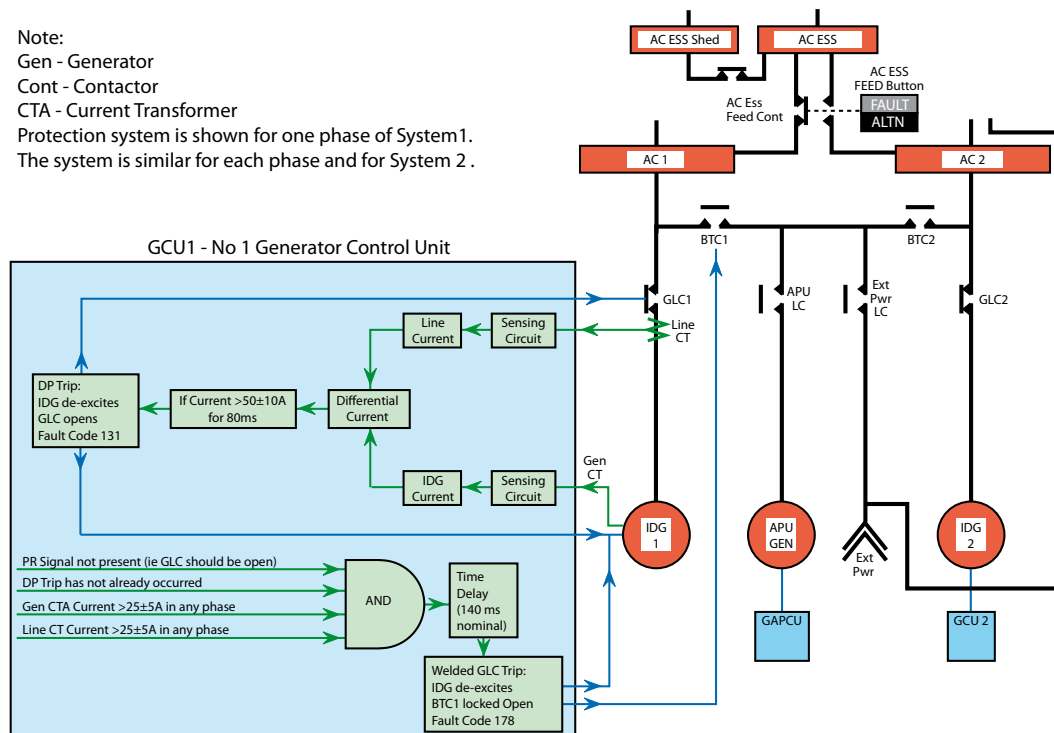
Gen - Generator

Cont - Contactor

CTA - Current Transformer

Protection system is shown for one phase of System 1.

The system is similar for each phase and for System 2.



**Figure 9**

### Differential and Welded GLC Protection Schematic

being supplied by the two IDGs, the loss of output from the affected IDG causes the BTCs to close automatically via relay logic, and the remaining online IDG then feeds both AC Main busbars. If the APU generator is online, only the BTC on the affected side closes, to replace the lost IDG supply. In either case, the automatic switching of power sources means that there should be no loss of electrical power to the aircraft's systems.

#### 1.6.3.8 GCU Welded GLC Protection

Another function, known as 'GLC Failure Protection' or 'Welded GLC Protection' aims to ensure that the GLC has, in fact, opened when signalled to do so. In this case the GCU monitors only the IDG CT signal. If a significant current is sensed in any phase when the signal to activate the PRR is absent and a DP has not been triggered, the GCU assumes that the GLC has erroneously remained closed and therefore de-excites the IDG. Additionally, the GCU locks out the BTC on the same side in order to prevent it from closing and potentially creating a hazard by allowing other power sources to motor the IDG through the apparently closed GLC contacts. A BITE message 'FC 178 GLC' is registered in the GCU Non-Volatile Memory (NVM), signifying that a Welded GLC Protection trip has occurred.

The IDG CT current threshold for this function is more than  $25 \pm 5$  A for 140 ms (-10/+20 ms).

As this function is intended to protect against failure of the GLC contacts to open, it remains in effect after the associated generator has been selected off.

#### 1.6.3.9 Ground Power/APU Generator Control Unit

The GAPCU is a similar unit to the GCU, providing monitoring, control, protection, testing, status and fault reporting functions for the APU generator and ground power sources. In addition, the GAPCU acts as the BITE interface for the entire EPGS.

#### 1.6.3.10 System Test and Fault Monitoring

The GCUs and the GAPCU incorporate BITE, with operational monitoring, fault isolation and maintenance test functions for the EPGS. The GAPCU co-ordinates these activities. It receives data on EPGS status from the GCUs for display on the ECAM and also forms the EPGS BITE interface, interrogating and commanding the GCUs for BITE purposes.

The GCUs and GAPCU each perform a self-test when initially powered up and then continuously monitor themselves and associated parts of the system. If a fault is detected that would result in a protective trip, the unit checks its fault sensing system, in an attempt to isolate the fault, by stimulating the sense circuitry associated with the trip and checking the response. If the response is as expected, the system judges the fault to be external to the controller. The unit records data on the fault in its NVM. The GAPCU reads the faults recorded by the GCUs and passes them, together with its own recorded faults, to the Centralised Fault Display System (CFDS). The CFDS is primarily a troubleshooting aid for maintenance personnel. Details of the faults can be read from the Post Flight Report (PFR), which is generated by the CFDS.

Additionally, in the event of a protective trip, a 'snapshot' facility enables the GCU or GAPCU to record detailed information on relevant parameters, known as Trouble-Shooting Data (TSD). The unit captures the TSD within the microprocessor cycle in which the fault is sensed, before activating any associated protection function, and stores it in its memory. In the case of a DP trip, the current after the protection has operated is also recorded.

For maintenance purposes, the units can be commanded on the ground to perform a self-test, when the associated generator is not running. The GAPCU transmits the test command to the GCUs and passes the results back to the CFDS. Reports on the status of aircraft systems, including a PFR and Previous Legs Reports, can be printed out to assist maintenance operations.

#### 1.6.4 Other Relevant Aircraft Systems

##### 1.6.4.1 Laptop tool

The aircraft was equipped with two laptop computers for the pilots to be able to access information from the FCOM. Paper copies of the FCOM were not available but a paper copy QRH was available.

##### 1.6.4.2 APU

The left engine fuel feed line supplies the APU. The required pressure is normally available from tank pumps. If pressure is not available (aircraft on battery power only or pumps are off) the APU fuel pump will start automatically.

#### 1.6.5 Minimum Equipment

The aircraft manufacturer's Master Minimum Equipment List (MMEL) specifies the non-critical aircraft equipment that is permitted to be unserviceable when the aircraft is dispatched, together with any associated operational limitations and the maximum allowable period before rectification is required. From the MMEL, each operator typically generates an individual MEL, which can be more restrictive than the MMEL, but never less so.

The A320-series MMEL permitted dispatch of the aircraft for non-Extended Twin Operations (ETOPS) flights for a maximum of 10 days with one IDG, GCU and/or GLC inoperative, provided the APU generator was online and used throughout the flight and provided the rest of the EPGS was operating normally. G-EZAC's operator had included the above dispatch allowance in its MEL. The conditions specified in the FCOM were as follows:

- '1) APU and AC auxiliary generation are operative and used throughout the flight*
- 2) APU fuel pump is operative*
- 3) All busses can be powered*
- 4) Indications and warnings for the remaining AC main generation and the AC auxiliary generation are operative*
- 5) Flight altitude is limited to 33,500 ft*
- 6) Galley automatic shedding is operative'*

An Operational Procedure detailing a pre-flight check of the EPGS aimed at ensuring that the conditions were met was provided in a subsection of the MEL. However, the instructions on how to perform the required test of the APU fuel pump were elsewhere in the FCOM, which was not clearly evident to the crew. Therefore this part of the procedure was not carried out before G-EZAC's departure from Alicante. The procedure did not require a check of the transfer of the AC ESS busbar feed from AC BUS 1 to AC BUS 2 using the AC ESS FEED switch.

Both the MMEL and operator's MEL provisions were irrespective of the type of fault that had led to the unserviceability. There was no requirement or recommendation for any checks aimed at determining the cause of an IDG, GCU or GLC fault, prior to dispatch with one or more of them inoperative.

#### 1.6.6 Effects on aircraft systems of AC BUS 1 and AC ESS busbar loss

##### 1.6.6.1 General

Loss of AC BUS 1, prior to transfer of the AC ESS busbar to AC BUS 2, results in a very large number of aircraft systems effects, most of which are summarised in Appendix 1.

As well as the effects given in Appendix 1, loss of the AC BUS 1 and AC ESS busbars also results in loss of all the annunciator lights powered by the de-energised busbars. Annunciator lights powered by AC BUS 2 or by the other busbars that remain energised should still be operative.

The more significant systems affected by loss of AC BUS 1, AC ESS and their sub-busbars are described in the following sections.

#### 1.6.6.2 Electronic Instrument System

Loss of the AC BUS 1 and AC ESS busbars causes the loss of power supplies to the captain's PFD and ND and the upper ECAM display and thus blanking of these displays.

#### 1.6.6.3 Hydraulic system

A320-series aircraft have three hydraulic systems, designated as Blue, Green and Yellow. The Blue system is normally pressurised by an electrically-powered pump supplied from AC BUS 1. The Blue system powers specific primary and secondary flight control surfaces, in conjunction with Green and Yellow systems. In certain failure situations the Blue system can be powered from a pump driven by the RAT. If the RAT is not operating, loss of AC BUS 1 will cause depressurisation of the Blue hydraulic system.

#### 1.6.6.4 Air Data and Inertial Reference System

The aircraft's ADIRS utilises three Air Data and Inertial Reference Units (ADIRU) to determine flight parameters for use by multiple aircraft systems. The ADIRU power supply busbars are AC ESS for No 1, AC BUS 2 for No 2 and AC BUS 1 for No 3. Thus de-energisation of the AC BUS 1 and AC ESS busbars causes loss of the No 1 and No 3 ADIRUs.

#### 1.6.6.5 Flight controls

Primary and secondary flight control surfaces are controlled via a number of flight control computers which receive data on aircraft behaviour from the ADIRS.

The normal flight control laws use normal acceleration and roll rate as basic parameters and provide a number of features, including stability, automatic longitudinal trimming, Dutch roll damping, turn coordination and engine failure compensation. They also provide protection against extreme attitudes, excessive load factor, overspeed and stall. In the event of loss of two or more ADIRUs the system reverts to alternative control laws, such as 'pitch alternate' and 'roll direct', under which many of the automatic and protection features are lost.

Loss of the AC BUS 1 and AC ESS busbars de-energises a number of the flight control computers and actuator electric motors, reducing the level of redundancy for both primary and secondary flight controls. The concurrent

loss of two ADIRUs resulting from the busbar losses would cause reversion to the alternate control laws. Depressurisation of the Blue hydraulic system renders the No 3 ground spoiler on each wing inoperative.

#### 1.6.6.6 Landing gear

Normal landing gear actuation uses the Green hydraulic system. A safety valve automatically isolates the hydraulic supply to the gear when the calibrated airspeed, as determined by the ADIRS, exceeds 260 kt. The airspeed data is supplied by ADIRUs 1 and 3.

Loss of both airspeed data sources due to loss of the power supplies to ADIRUs 1 and 3 will also cause the safety valve to close, with the effect that the landing gear cannot be retracted and must be lowered by gravity using the emergency extension system.

#### 1.6.6.7 Cabin pressurisation

Cabin pressurisation is normally controlled and monitored automatically by two independent systems, each with a Cabin Pressure Controller (CPC). De-energisation of the AC BUS 1 and AC ESS busbars prevents CPC 1 and CPC 2 from operating, because of the loss of power and loss of ADIRU data. Cabin pressurisation would then need to be controlled manually by the crew. The excess cabin altitude warning system would still be operational.

#### 1.6.6.8 Oxygen systems

The passenger oxygen system provides oxygen supply via masks normally contained in the overhead panels. The masks automatically deploy if the cabin pressure altitude exceeds 14,000 ft. The system operates via a sequence of relays and a pressure switch, powered from the DC ESS busbar. The relays allow supply of power from the AC ESS SHED busbar to an electrical latch assembly in the overhead panels which releases the oxygen masks. A manual release system operates in the same way as the automatic system, except that the pressure switch is bypassed.

Loss of the AC BUS 1 and AC ESS busbars causes loss of both DC ESS and AC ESS SHED busbars and thus prohibits the release of the passenger oxygen masks, either automatically or manually. The flight crew oxygen system is unaffected.

#### 1.6.6.9 VHF radio

The VHF radio communication system comprises the ACPs, Audio Management Units (AMU), the transceivers and the RMPs. The ACPs enable the crew to select the radio channel and adjust the volume. There are three identical ACPs, one each for the captain and co-pilot, located on the centre console and a third, mounted on the overhead panel, behind the co-pilot's station. The three RMPs, which are adjacent to the ACPs, enable the crew to select the desired radio frequency for communication and also contain the controls for the backup radio navigation system. The radio systems are designated No 1, 2 and 3, for the captain, co-pilot and observer's systems, respectively.

If ACP 1 or ACP 2 should fail, the crew can switch to ACP 3, by selecting the AUDIO SWITCHING selector (located on the overhead panel) to either 'CAPT 3' or 'F/O 3'. Audio selections must be made on ACP 3, but frequency selections are made on the RMPs as normal.

G-EZAC was fitted with upgraded digital AMUs. Unlike earlier versions, both audio cards in all three AMUs rely on supplies from the DC ESS busbar. The unit ceases to function when both audio cards are unpowered. Loss of the DC ESS busbar as a result of AC BUS 1 and AC ESS busbar loss thus renders all three VHF radios inoperative. Given this finding, Airbus has stated:

*'In the light of this [G-EZAC's] event Airbus is evaluating if the power supply of the digital AMU need to be modified'*

#### 1.6.6.10 ATC transponder

The aircraft was equipped with two independent transponder channels, designated ATC 1 and ATC 2<sup>5</sup>. ATC 1 is powered from the AC ESS SHED BUS and ATC 2 from the AC BUS 2 busbar. Loss of the AC BUS 1 and AC ESS busbars thus renders ATC 1 inoperative. ATC 2 should function after being manually selected and did so in this case. However, several minutes had elapsed before the crew made the ATC 2 selection, during which period G-EZAC was not visible on the Brest ATCC radar screens.

<sup>5</sup> When interrogated by ATC radar, the transponder transmits data which can be decoded by ATC radar to display specific information on the aircraft, including its altitude, on the radar screen.

#### 1.6.6.11 Traffic Alert and Collision Avoidance System

The ATC 1 transponder provides data to the TCAS. This communicates with other similarly-equipped aircraft in the vicinity to provide an alert to both crews of a possible flight path conflict and, if necessary, to advise manoeuvres to avoid a collision.

Loss of this transponder also causes the TCAS to be inoperative. The TCAS is powered from AC BUS 1 and is thus disabled if this busbar de-energises.

#### 1.6.6.12 Enhanced Ground Proximity Warning System

The aircraft was fitted with an Enhanced Ground Proximity Warning System (EGPWS) that provides alerts and warnings aimed at preventing the aircraft from colliding with terrain. The system was powered from the AC BUS 1 busbar and is thus disabled if this busbar de-energises.

### 1.7 Meteorological information

The pilots reported that they were flying in VMC at the time of the event. Following the loss of electrical power the pilots were not able to obtain any further meteorological reports. They were able to maintain VMC for most of the remainder of the flight.

The 0950 METAR for Bristol, received en route through the ACARS prior to the incident, was as follows:

*'Surface wind from 020° at 14 kt, visibility more than 10 km, few cloud at 1,000 ft, temperature 13°C, dewpoint 11°C and QNH<sup>6</sup> 1012 mb'*

Weather information for a number of other airfields in the UK had also been received through ACARS prior to the incident and information for airfields in France was received in the pre-flight briefing documentation.

### 1.8 Aids to navigation

Not applicable.

<sup>6</sup> In an International Standard Atmosphere, the QNH is the equivalent Mean Sea Level pressure as calculated by Air Traffic Control.

## **1.9 Communications**

### **1.9.1 Air Traffic Control**

#### **1.9.1.1 Incident flight**

G-EZAC made first contact with Brest ATCC at 1051 hrs and reported level at FL 320. The co-pilot inadvertently used the incorrect callsign EZY6078 instead of EZY6074. The Brest controller queried the callsign and correct contact was then established. The aircraft was identified on the radar screens transmitting transponder code 5376.

At 1053 hrs the radar controller noticed that the Secondary Surveillance Radar (SSR)<sup>7</sup> returns from EZY6074 had disappeared, leaving only trace information visible, and then nothing (primary radar returns were not displayed on the Brest radar screens). He made several radio calls to try to contact the aircraft but received no reply. EZY6074 reappeared on their radar screens some 10 minutes later, but the controllers were unable to re-establish radio contact with the aircraft.

Bristol ATC first became aware of the emergency traffic inbound at 1110 hrs when they were called by ATC at West Drayton, who advised that EZY6074 was over the south coast of England in a descent, but not in radio contact.

Bristol ATC took action to notify all the responsible authorities to ensure the airport was prepared to accept the emergency aircraft. A full emergency was declared by the airport at 1116 hrs. All air traffic movements at Bristol Airport were suspended as the aircraft approached. When the aircraft was established on final approach, the tower controller broadcasted blind transmissions giving landing clearance and surface wind information.

#### **1.9.1.2 Reports from Brest ATCC radar controllers**

The incident occurred during the period of a shift change at Brest ATCC, which took place at 1100 hrs. After the incident, reports were received from the Brest radar controllers who covered the period from when EZY6074 disappeared from the radar screens until the time it reappeared.

The first radar controller noticed the disappearance of EZY6074 from his

---

<sup>7</sup> Primary radar systems monitor aircraft position by monitoring reflected radio signals to determine a range and bearing from the radar head. SSR is more advanced and allows additional aircraft parameters such as altitude, speed and rates of descent to be seen by ATC. This is achieved by the aircraft transmitting parameters via a transponder which is interrogated by the ATC ground station.

screen about 10 minutes before the shift change was due. He looked across at another screen and noticed that it had also disappeared from there. He made several radio calls to try to contact the aircraft, but without success.

The strategic controller realised that both radar and radio contact with EZY6074 had been lost. Attempts were then made to contact the aircraft on 121.5 MHz directly and by asking another easyJet aircraft to try on the company frequency, but these proved unsuccessful. The ATC personnel now realised they had no information as to the whereabouts of the aircraft and feared that it might have suffered a catastrophic event.

At 1056 hrs a westbound aircraft, callsign AAL63, checked in at FL 320 and was acknowledged by Brest ATCC. The radar controller then realised that if EZY6074 was continuing along its assigned north-north-westerly track at FL 320, there was a danger of it conflicting with AAL63, routing from east to west at the same flight level. He called AAL63 and asked if they could see the missing aircraft on their TCAS. After conferring with his replacement controller, as a precaution he decided to instruct AAL63 to descend to FL 310.

The shift change went ahead despite the complication of the apparently missing aircraft and the resultant inability of one shift to carry out a complete handover of information to the other. The oncoming radar controller was anxious to ensure that the AAL63 started a descent without delay and issued a second instruction to the aircraft to descend. AAL63 then started a descent and a few moments later one of the flight crew advised that they had seen an “easyJet 737” pass overhead northbound, but it was not visible on their TCAS display.

The radar controllers were relieved that the EZY6074 had been found, but also alarmed that it had come so close to another aircraft. A few moments later, the secondary radar signal from EZY6074 reappeared and one minute later the ‘squawk’ code changed to 7700, the emergency code.

#### 1.9.2 ACARS

On the outbound flight from Stansted to Alicante the commander contacted the operator’s Maintrol facility to advise of the generator failure. A copy of these communications was available for the investigation.

An attempt was made to contact G-EZAC by the operator following the loss of communication but this proved unsuccessful.

### 1.9.3 Telephone

As G-EZAC approached Bristol the commander attempted to communicate directly with Bristol ATC by mobile telephone. However, he was unable to obtain a signal even at low altitude.

In August 2006, NATS, the UK national air traffic service provider, issued a safety notice regarding the use of satellite phones in case of Radio Telephony (RTF) failure as a result of a study which showed a marked increase in the number of radio failure incidents in UK airspace. The safety notice advised that with the current heightened awareness of airborne security, if ATC is unable to establish contact with an aircraft with an RTF failure it could lead to the aircraft's interception by the UK Ministry of Defence. The notice included details of allocated airborne telephone numbers for aircraft to call in the event of loss of all other means of communication with ATC. G-EZAC was not equipped with a satellite phone.

### 1.9.4 Procedures for loss of radio communication

Radio failure procedures for aircraft in UK airspace are specified in the UK Aeronautical Information Publication (AIP), section ENR 1.1.3. They were also available on the aircraft in a commercial booklet. In summary, in the event of loss of radio communication, ATC will expect an Instrument Flight Rules (IFR) flight to carry out the notified instrument approach procedure as specified for the designated navigational aid and, if possible, land within 30 minutes of the Estimated Arrival Time (EAT).

## 1.10 Aerodrome information

Bristol Airport has a single bi-directional runway orientated 09/27. Runway 09 is 2,011 m long and 45 m wide. The Landing Distance Available (LDA) is 1,938 m and the runway has a net downslope of 0.15%. The touchdown elevation is 613 ft amsl.

## 1.11 Flight Recorders

The aircraft was fitted with a solid state Cockpit Voice Recorder (CVR), Flight Data Recorder (FDR) and Quick Access Recorder (QAR). Data from all three devices was downloaded and used together with data from the aircraft's CFDS.

#### 1.11.1 CVR

The CVR was a two-hour, four-channel recorder. Power supply to the CVR was from the AC ESS SHED busbar. The recording captured the end of the previous flight and one hour and 42 minutes of the incident flight.

As it was powered by the AC ESS SHED busbar, the CVR ceased recording at the time of the incident. Recording restarted once the aircraft was on the ground and the electrical power was recovered. Therefore no audio information was available for the incident.

#### 1.11.2 FDR

The FDR recorded just over 26 hours of operation and, as it was powered from AC BUS 2, it remained powered throughout the flight. The QAR, which had the same power source, also remained available.

Data recorded by the FDR was collected from the various aircraft systems via the Flight Data Interface Management Unit (FDIMU). The FDIMU was also powered by AC BUS 2, so data flow was maintained throughout the flight.

As electrical system parameters were recorded by the FDR every four seconds, an electrical transient or instantaneous power loss may not have been captured by the FDR. It is possible for contactors to cycle more than once within a four second period and the FDR data must therefore be interpreted with this in mind.

A number of parameters which would have been useful for this investigation were not recorded by the FDR. These include AC and DC supply voltages, AC ESS FEED push-button switch position and APU and RAT operation parameters. Additionally, no cabin pressurisation parameters, other than the excess cabin altitude warning, were recorded.

#### 1.11.3 Pre-flight MEL procedure

The CVR captured the pre-flight MEL Operational Procedure performed by the flight crew prior to dispatch with IDG 1 inoperative. This was time-aligned with the FDR to confirm the operation of the electrical system.

Engine start was at 0911 hrs. The opening or closing of BTC 2 and GLC 2 recorded on the FDR coincided with a 'clunk' noise recorded on the Cockpit Area Microphone (CAM). The MEL procedure was carried out and the response of the electrical contactors was as expected.

#### 1.11.4 Incident flight from Alicante to Bristol

The aircraft departed Alicante with the APU generator supplying power to AC BUS 1. GLC 1 was open, BTC 1 closed, BTC 2 open and GLC 2 closed. As the aircraft approached northern France at FL 320 and an indicated airspeed of 277 kt, autothrust and autopilot were engaged and all AC and DC busbars were powered.

At 1052:41 hrs, the CVR ceased recording and the FDR recorded BTC 1 opening and loss of the AC BUS 1, AC ESS and DC ESS busbars.

The FDR recorded the status of the AC BUS 1-AC ESS contactor and the AC BUS 2-AC ESS contactor as separate parameters. The AC BUS 1-AC ESS contactor opened at the time of the event and remained open for the rest of the flight. No further change to either changeover contactor was recorded and the AC BUS 1, AC ESS and DC ESS busbars were recorded as unpowered for the remainder of the flight.

At the time of the loss of AC BUS 1, the TR 1 contactor was no longer supplied and therefore opened, which would have led to the loss of supply to DC BUS 1 (Figure 8, page 19). However, no loss of DC BUS 1 was recorded on the FDR, possibly due to the parameter sampling rate. At the same time, the DC BUS 1 Tie contactor opened and the DC BUS 2 Tie contactor closed. The DC BUS 1 Tie contactor then closed, powering DC BUS 1 via DC BUS 2.

##### 1.11.4.1 Effects on aircraft systems

After the loss of power, the recorded status of the aircraft systems was consistent with the loss of power supply to the AC BUS 1, AC ESS and DC ESS busbars (Appendix 1).

The recorded data also showed a switch from the 'normal' flight control law to 'pitch alternate law' and 'roll direct law'. After the autopilot disconnection, the control inputs for the remainder of the flight were made exclusively via the first officer's sidestick.

Recorded data for hydraulic pressures became invalid after the loss of power because the hydraulic pressure sensors were powered by the DC ESS SHED busbar. The loss of these sensors also meant that the ECAM display of hydraulic pressure would no longer be available. Discrete data for hydraulic pressures was successfully recorded and indicated 'low Blue system hydraulic pressure' eight seconds after the loss of AC BUS 1. The FDR also recorded a

‘loss of Spoiler 3 availability’ and the loss of Blue hydraulic system control of the ailerons and elevators.

#### 1.11.4.2 No 2 Bus Tie Contactor operation

Prior to the event, BTC 2 was open but 51 seconds after the loss of AC BUS 1, the FDR recorded a BTC 2 closure. According to the aircraft manufacturer, in this electrical configuration, the only reason for BTC 2 to close was if the APU GLC had opened. The APU GLC position was not recorded so this cannot be confirmed.

Two minutes and 20 seconds later, BTC 2 reopened, suggesting that the APU GLC had closed. This BTC 2 behaviour was repeated on two further occasions over around seven minutes. Finally, BTC 2 remained open until after touchdown in Bristol.

#### 1.11.5 Radar recordings

The radar data analysed in the investigation was obtained from NATS, the UK air traffic control services provider. Data was recovered from the Jersey, Burren and Clee Hill radar heads. When the event occurred, the radar recordings showed a loss of SSR (Figure 10), but G-EZAC was still visible on primary radar<sup>8</sup>.

The recorded radar data also showed the westbound tracking AAL63 in the vicinity of G-EZAC at FL 320. AAL63 began its descent from FL 320 at 1101:17 hrs. Analysis of the data indicated that EZY6074 crossed the path of AAL63 2.86 nm in front of it, heading north-north-west. At this time, AAL63, which was tracking to the west towards EZY6074, was around 600 ft below EZY6074’s level, having commenced its descent 40 seconds earlier. AAL63 continued its descent and arrived at the point of intersection of the two aircrafts’ tracks at 1102:16 hrs, at around FL 310, 19 seconds after EZY6074 had passed by. At this time EZY6074 was 2.67 nm to the north. This was the closest recorded separation between the two aircraft.

#### 1.11.6 Flight Recorder improvements

##### 1.11.6.1 Recorder Independent Power Supply

In March 2003, the European Organisation for Civil Aviation Equipment (EUROCAE) issued ED112, defining a ‘*Minimum Operational Performance*

---

<sup>8</sup> Primary radar returns were recorded from Burren radar as Jersey only has secondary radar.



Google Earth™ mapping service/CNES/Spot image, Teletlas, Europa Technologies, NASA

**Figure 10**

### G-EZAC Secondary Radar Recording

*Specification (MOPS) for Crash Protected Airborne Recorder Systems*. Within ED112 is the minimum specification for a Recorder Independent Power Supply (RIPS). RIPS is a device capable of providing the CVR with a backup power supply, independent of the aircraft electrical system. The purpose of the RIPS is to allow for continued operation for 10 minutes in all cases where electrical power to the recorder is removed.

The International Civil Aviation Organisation (ICAO) Flight Recorder Panel has submitted a number of recommendations for modifications to ICAO Annex 6 (Operation of Aircraft) which included the implementation of RIPS. The current recommendations for this aircraft category<sup>9</sup> are:

- to *require* implementation of RIPS for all new aircraft and new aircraft types which are fitted with a CVR, built after 1 January 2016.
- to *recommend* that all in-service aircraft fitted with a CVR be fitted with a RIPS from 1 January 2016

<sup>9</sup> Fixed-wing commercial air transport aircraft with a Maximum Takeoff Weight (MTOW) in excess of 5,700 kg.

These recommendations were drafted based on studies and flight recorder specialist' experience, and are currently being assessed by ICAO.

#### 1.11.6.2 Cockpit Image Recording

ED112 also defines a minimum specification for aircraft required to carry an image recording system. Currently no aircraft are required to carry such a system. The UK CAA has conducted a trial to establish the effectiveness of airborne image recorders which is reported in CAP 762. One of the conclusions of this report was that *'image recorder systems provide images of sufficient resolution to enable investigators to identify both missing data and data fail flags'*. Cockpit image recording is also the subject of the ICAO Flight Recorder Panel and, as for RIPS, recommendations have been submitted to ICAO for updates to Annex 6. The current drafts for this aircraft category<sup>10</sup> are:

*'All aeroplanes of a maximum take-off mass of over 5700 kg for which the individual certificate of airworthiness is first issued on or after 1 January 2016 should be equipped with a Class A AIR<sup>11</sup> capable of capturing data supplemental to conventional CVR and FDR flight recorders*

*From 1 January 2018 all aeroplanes of a maximum take-off mass of over 5700 kg should be equipped with a Class A AIR capable to capture data supplemental to conventional CVR and FDR flight recorders.'*

Both of these requested changes are 'recommended' items which means that compliance is not mandatory.

The AAIB report into the G-EUOB incident made the following safety recommendation (Safety Recommendation 2007-070):

*'The International Civil Aviation Organisation should expedite the introduction of a standard for flight deck image recording, and should encourage member states to provide legal protection, similar to that for cockpit voice recordings, for such image recordings.'*

<sup>10</sup> Fixed-wing commercial air transport aircraft with a Maximum Takeoff Weight (MTOW) in excess of 5,700 kg.

<sup>11</sup> A Class A Aircraft Image Recorder (AIR) is defined as one which is required to capture the general cockpit area including data supplemental to conventional flight recorders.

*The ICAO formally responded to the Safety Recommendation on 25 June 2008, stating that: 'The Air Navigation Commission (ANC) has tasked the Flight Recorder Panel to develop Standards and Recommended Practices (SARPs) on requirement for airborne image recorders. The proposed SARPs are planned to be reviewed towards the end of 2008.'*

## 1.12 Aircraft Examination

### 1.12.1 Initial

The flight crew and an operator's technician who attended G-EZAC provided initial reports on the aircraft's status after its arrival at Bristol. They indicated that it was not possible to bring the APU generator online until the battery switches had been cycled OFF and ON. A GPU was subsequently connected and took over supply of the aircraft electrical system in the normal way.

### 1.12.2 Fault and Troubleshooting Data

CFDS Post Flight Reports obtained during the investigation showed the following fault messages relevant to the EPGS on the day of the incident:

Time hrs	Phase of Operation	Fault Message	Fault Message Meaning
0227	Engine ground run	IDG1 (E1-4000XU) GEN CT/ GCU1 (1XU1)	Fault detected by GCU1 IDG CT
0539	Stansted-Alicante leg (start 0514 hrs stop 0743 hrs)	IDG1 (E1-4000XU) GEN CT/ GCU1 (1XU1)	Fault detected by GCU1 IDG CT
1052	Alicante-Bristol leg (start 0927 hrs stop 1133 hrs)	GLC1 (9XU1)	Fault on GCU1

The items in parentheses are the aircraft manufacturer's circuit component identifiers, known as Functional Item Numbers (FINs).

TSD retrieved from GCU1's NVM provided the following information:

Leg	Current Transformer	Current sensed by Current Transformers (amp)		
		Phase A	Phase B	Phase C
Stansted-Alicante	IDG CT	80.8	0	80.8
	Line CT	80.8	90.9	80.8
Alicante-Bristol	IDG CT	0	20.2	0
	Line CT	0	0	0

Thus, the information indicated that during the first flight leg a difference of approximately 91A between the IDG and Line current signals for Phase B of the No 1 system had been sensed. This would be expected to cause activation of the Differential Protection function (threshold  $50\pm 10\text{A}$ ) and to trigger the IDG 1 fault that was recorded. During the incident flight, with No 1 generator switched off, an IDG 1 Phase B current of around 20A was sensed. This would be expected to trigger a Welded GLC Protection (threshold  $25\pm 5\text{A}$ ) and the GLC 1 fault that was registered.

#### 1.12.3 Aircraft Inspection

An AAIB-supervised examination of the aircraft commenced on the day of the incident and a number of ground checks were carried out over the following three days, with the operator's assistance. An electrical system specialist from the aircraft manufacturer was also present.

Visual inspection revealed no anomalies with the EPGS components that could be accessed, including circuit breaker settings and the condition of the wiring at the GCU 1 rack. Selectors on the EPGS control panel were found with their normal settings, including the AC ESS FEED push-button. However, the switch settings found were not considered to constitute reliable evidence of the settings in flight after the multiple busbar loss, given the possibility of subsequent disturbance. Similarly, the selected setting of the BRT/DIM toggle switch during the incident could not be reliably established.

Continuity and ground insulation checks of the electrical cables joining the No 1 IDG CTs and line CTs to GCU 1 showed no abnormalities.

#### 1.12.4 Aircraft Checks

A GPU was connected to power the aircraft for a series of EPGS checks, but on this occasion the POWER AVAILABLE caption failed to illuminate. This was repeated with two other GPUs. As there appeared to be a problem with both GCU 1 and the GAPCU, both units were changed, after which the aircraft accepted ground power normally. With the system powered, TR 1 was found to be off-line, but energised normally after it had been reset via the MCDU. The CFDS indicated a hard fault with the No 1 Cabin Pressure Controller; this was not considered relevant to the incident.

In order to explore the EPGS behaviour, the aircraft was set up on the ground with the engines and APU running. Automatic transfer of power feed with assorted combinations of ground power, APU and IDG sources was normal. Checks of the AC ESS busbar manual transfer from AC BUS 1 to AC BUS 2 were carried out with various power source combinations.

Simulation of the incident event was carried out by first selecting GEN 1 to OFF, causing GLC 1 to open and AC BUS 1 to feed from another source. The Bus Tie push-button was then operated to open BTC 1, thus removing the supply to the AC BUS 1 and AC ESS busbars and illuminating the FAULT caption in the AC ESS FEED push-button switch. When the AC ESS feed switch was operated the power supply to the AC ESS busbar transferred over to AC BUS 2 and the ALTN caption in the push-button switch illuminated. The sequence was repeated successfully many times, both with the replacement GCU 1 and GAPCU and reportedly with the original units reinstalled; indications and system behaviour were normal in all cases.

With the AC ESS busbar de-energised, with either the original or the replacement GCU 1 and GAPCU installed, the following features were observed:

- Left pilot's PFD and ND and upper ECAM display blank
- All annunciator captions on EPGS control panel unlit, except:
  - ADIRS – ON BAT
  - AC ESS FEED button - FAULT
- Nos 1, 2 and 3 VHF radios inoperative
- Audio Control Panels No 1 and 2 unresponsive to selections
- Four pages of Inoperative Systems on ECAM display  
(Appendix 1 lists the expected system effects)

- Area lighting in the cabin illuminated
- Reading lights and 'No Smoke' captions in the cabin unlit on left side, lit on right side

Each time the AC ESS busbar was re-energised by selecting alternate feed, re-illumination of flight deck lighting, many annunciator captions and blank display units rapidly made it obvious that the system had reconfigured. The response was apparent around 0.75 seconds after operating the AC ESS FEED push-button switch.

#### 1.12.5 Component Checks

##### 1.12.5.1 General

Components of possible relevance to the event were removed and bench tested at manufacturers' facilities and, where relevant, strip-examined. Fault and troubleshooting data were retrieved from the GCU 1 and GAPCU NVMs. For reference, circuit components are identified by their FINs, in parenthesis.

No fault was found with the AC ESS FEED control and indicating circuit components, namely the circuit breaker (5XC), push-button switch (11XC), two relays (3XH and 12XE) and two contactors (3XC and 15XE).

##### 1.12.5.2 Generator Control Unit No 1

GCU 1 (PN 767584J, SN 2959) was operated on an aircraft manufacturer's integration test rig intended to simulate the aircraft system. With GEN 1 selected off and the simulated EEPGS powered by ground power, an intermittent Phase B current was sensed by the No 1 IDG CT. The current fluctuated to 25-40A and on two occasions within a four-hour test period the GCU 1 registered a GLC 1 fault and executed the Welded GLC Protection function, thereby locking out BTC 1.

The GCU was then checked by its manufacturer, Hamilton Sundstrand, on a production test bench and the contents of its NVM downloaded. The manufacturer also subjected the unit to Environmental Stress Screening, where it was run on a test bench for several hours at temperatures ranging from -40°C to +70°C. One or two momentary IDG Phase B current signals were seen but, with this exception, no faults were found and no protection functions were triggered.

However, the unit was subsequently left permanently powered over an extended period and after around two weeks a DP trip occurred, associated with a Phase B current of 60A. Detailed examination of the CT sensing circuits identified an intermittent contact in a transformer that was part of the Phase B IDG CT circuit (the T5 transformer on the A2 wiring board). This could result in the Phase B IDG current intermittently being erroneously sensed as zero. However, the manufacturer considered that, because of electrical noise affecting the associated amplifier, the defect could also result in an erroneous sensed current of up to around 80A.

#### 1.12.5.3 Ground and Auxiliary Power Control Unit

When checked on a production test bench, the GAPCU (PN 1700667D, SN 1742) failed the check. A fault message 'UUT RS485 communications failure' was given. Disassembly and physical examination revealed damage to three conductors in a flexible ribbon connector joining a GAPCU external connector socket (Socket B) to a socket on the A5 wiring board. The conductors were used to provide 3-phase external power signals to the GAPCU to enable it to monitor power quality; each was connected via a 3A circuit breaker.

Detailed examination revealed signs of electrical overstress damage to the ribbon, causing local severance and/or shorting of the three conductors. Metal spatter from the conductors and heat damage to the plastic laminate ribbon was evident in the damaged area. The evidence suggested that the overstress had been of short duration. The unit manufacturer considered that it could have been caused by a direct lightning strike to the external power socket pins or by a static discharge to the pins when a GPU was connected with the normal earth connection between the GPU and the aircraft absent. The damage would have prevented the GAPCU from accepting external power onto the aircraft.

### 1.13 Medical and pathological information

Not applicable.

### 1.14 Fire

There was no fire.

### 1.15 Survival aspects

Not applicable.

**1.16 Tests and research**

See Section 1.12, page 38.

**1.17 Organisational and management information**

Not applicable.

**1.18 Additional information****1.18.1 Aircraft certification standards****1.18.1.1 System failure analysis**

The requirements for consideration of system failures and their effects at the aircraft design stage are defined in the standard EASA 25.1309 (formerly JAR-25.1309). Guidance is provided in document ACJ No 4 to the standard. This notes (Section 8.a.):

*'The objective of JAR 25.1309 is to ensure an acceptable safety level for equipment and systems installed on the aeroplane. A logical and acceptable inverse relationship must exist between the Average Probability per Flight Hour and the severity of Failure Condition effects'.*

Failure condition classifications include the following, with relevant aspects of the defined effects summarised:

- |              |                                                                                                                                   |
|--------------|-----------------------------------------------------------------------------------------------------------------------------------|
| Minor        | - Slight reduction in functional capability or safety margins. Slight increase in crew workload.                                  |
| Major        | - Significant reduction in functional capability or safety margins. Significant increase in crew workload. Possible injuries.     |
| Hazardous    | - Large reduction in functional capability or safety margins, Excessive crew workload. Small number of serious or fatal injuries. |
| Catastrophic | - Normally hull loss and multiple fatalities.                                                                                     |

Allowable probability rates for the failure conditions are:

Failure Condition Classification	Minor	Major	Hazardous	Catastrophic
Probability per Flight Hour	$<10^{-3}$	$<10^{-5}$	$<10^{-7}$	$<10^{-9}$
Qualitative Probability	Probable	Remote	Extremely Remote	Extremely Improbable

In connection with compliance with JAR-25.1309 the ACJ (Section 9.b.(1)(iv)) notes that any analysis must consider:

*'The effect of reasonably anticipated crew errors after the occurrence of a failure or Failure Condition.'*

It also notes (Section 12.a.) that:

*'When assessing the ability of the flight crew to cope with a Failure Condition, the information provided to the crew and the complexity of the required action should be considered.'*

The ACJ (Section 9.c.) also notes that:

*'systems and controls, including indicators and annunciations, must be designed to minimise crew errors which could create additional hazards.'*

The ACJ (Section 6.b.(2)(x)) also notes that the fail-safe design concept aimed at ensuring a safe design includes the principle of *'Margins or Factors of Safety to allow for any undefined or unforeseeable adverse conditions.'*

#### 1.18.1.2 Manufacturer's failure analysis

According to the aircraft manufacturer, their theoretical failure analyses are predicated on the assumption that flight crews will always take the specific corrective actions in a timely manner. In-service experience shows that this may not always be achieved, as in this event.

For any reported in-service event such as this one, Airbus conduct a review in order to check the continued airworthiness of the fleet; this is to ensure that the initial design failure rates and assessments are still valid.

#### 1.18.2 EPGS failure assessment

The loss of a single main generator channel was classified by airworthiness authorities as '*Minor*'; the associated calculated probability rate was  $4.7 \times 10^{-4}$ /flight hour. Loss of all main generation channels was categorised as '*Major*' (calculated failure probability rate of  $5 \times 10^{-7}$ /flight hour).

#### 1.18.3 Generation control panel push-button switches

The selectors on the electrical power control panel consist of alternate-action push-button selector switches, whereby consecutive pushes cycle the switch between the different selections. Annunciator captions in each push-button illuminate to indicate the status or fault condition of the associated function.

A large number of similar switches are used on the flight deck for various functions. In the event of EPGS disruption, the power supplies for most of the switch captions could be lost. The aircraft design aimed to ensure that the captions in those switches likely to need operating in various failure situations would remain powered.

When a push-button is released its physical depression varies by only 1-2 mm between the ON and OFF selections.

#### 1.18.4 G-EZAC Electrical Power Generation System history

Information from aircraft records indicated the following information relating to G-EZAC's EPGS in the period prior to the incident, shown in Table 1.

It appeared that the IDG 1 CT/GCU 1 fault registered during the engine ground run on the morning of the incident should have required a further GCU 1 replacement. However, after the GCU had been reset, the system behaviour was normal for the remainder of the ground run and the GCU remained installed.

The No 1 GCU (SN 2821) that had experienced problems on G-EZAC on the day before the incident and had been replaced was subsequently repaired by its manufacturer. This involved replacement of the two Static Random Access Memory (SRAM) devices on circuit board A3, following which the unit passed the tests required for release to service. These devices are used to memorise system parameters.

Information received suggested that, in comparison with similar aircraft, the level of EPGS problems indicated by the summary in Table 1 of G-EZAC's

Date	Event / Technical Log Entry	Fault / Maintenance Action
12-7-06	APU Generator will not come online	GAPCU reset
13-7-06	APU Generator inoperative	GAPCU reset
13-7-06	APU Generator will not come online.	GAPCU replaced 16-7-06
16-7-06	APU Generator inoperative.	GAPCU replaced. System works normally
17-7-06	AC experienced severe electrical interruptions. Re-settable then it became impossible	GAPCU replaced 22-7-06 (SN 1742 fitted)
13-9-06	Airbus Service Bulletin A320-24A1119-000-00 incorporated	External Power Socket replaced
13-9-06	6 Flights: 10.53 flight hours	
14-9-06	6 Flights: 10.23 flight hours	
14-9-06	GAPCU fault (3 flights before incident)	Considered to be Pin E (interlock circuit) problem
14-9-06	GCU 1 problems, twice. (GCU SN 2821). Technical Log entry: 'Gen 1 U/S'.	TSD: "Failsafe 01"
15-9-06	GCU1 replaced at Stansted (SN 2959 fitted).	Operational check and engine run carried out (specified in Aircraft Maintenance Manual)
15-9-06 0227 hrs	"FC 131 IDG1 CT/GCU1" fault during engine ground run.	GCU reset, system behaviour then normal, aircraft released to service
15-9-06 0539 hrs	Generator 1 tripped off-line (would not reset) during Stansted-Alicante flight. PFR fault identifier "IDG1 (E1-4000XU) GEN CT/ GCU1 (1XU1)"	Allowable Deferred Defect 1-46 raised. Fly in accordance with MEL 24-20-01, Expiry 26-9-06
15-9-06	"AC ESS bus 1 fail. Unable to reset iaw ECAM." PFR fault identifier "ELEC GEN 1 FAULT"	

Table 1

recent history was not exceptional. A number of the problems had apparently been caused by defective SRAM devices from a batch that was known to be potentially faulty. This was described in Airbus OIT 999.0106/06 issued on 24 August 2006, which listed the serial numbers of approximately 2,200 GCUs and GAPCUs affected. The issue had caused a substantial number of cases of GCU trips across the fleet. The information in the OIT had not been made available to flight crews.

The records showed that the GCU 1 (SN 2959) fitted to G-EZAC at the time of the incident had previously been installed in three different aircraft within a five month period. In each case, the unit remained in service for only a short time until it was removed because a fault had been indicated, as follows:

Date	Event	Finding	Outcome
Dec 2005	GCU SN 2959 manufacture		
March 2006	Fault Code 131	No fault found	Returned to service
April 2006	Removed due to trip	No fault found	SRAM replaced, returned to service
July 2006	Removed due to non re-settable trip	No fault found	Returned to service
September 2006	Fitted to G-EZAC as GCU 1		

#### 1.18.5 GCU/GAPCU overhaul and repair

Normal practice was for a GCU or GAPCU rejected from service to be sent by the operator to an overhaul and repair facility and initially subjected to a standard acceptance test. The available information suggested that a substantial proportion of such units passed the test and were consequently released back to service 'No Fault Found' (NFF). As an example, for an unspecified period up to July 2006, 20 out of 69 GCUs (29%) removed for faults were reportedly returned to service NFF.

It was reportedly not routine practice for overhaul and repair facilities to record the fault codes recorded in the NVM of a unit sent for repair, or to retain a copy of the NVM contents. In some cases the NVM would be wiped before return to service and in others its contents would be left intact.

At the time of G-EZAC's incident, the unit manufacturer's overhaul and repair facility did not have a system to identify a unit that was repeatedly rejected from service, tested with NFF results and returned to service. There was also no system aimed at determining if a rejected unit might be suffering from a recurrent fault.

#### 1.18.6 Other A320-series electrical system disturbance events

##### 1.18.6.1 General

The AAIB is aware of other incidents of suspected EPGS disturbances. The events described below relate to aircraft equipped with Classic EPGS and EIS 1 CRT cockpit displays. As previously stated, G-EZAC was fitted with the EEPGS and EIS 2 LCD displays.

##### 1.18.6.2 Airbus A319, Registration G-EUOB

The incident to G-EUOB (MSN 1529) occurred on 22 October 2005 and the AAIB investigation is reported in AAIB Report 2/2008. As the aircraft climbed to FL 200 on a revenue passenger flight in night VMC with autopilot and autothrust engaged, there was a major electrical system disruption. This resulted in the loss or degradation of a number of important aircraft systems. The crew reported that both the captain's and co-pilot's PFD and ND went blank, as did the upper ECAM display. The autopilot and autothrust systems disconnected, the VHF radios and the intercom were inoperative and most of the cockpit lighting went off. There were several other more minor concurrent losses.

The commander maintained control of the aircraft by reference to the outside visible night horizon and to the standby instruments, which he found difficult to see in the poor light. The lighting for the standby instruments had also been lost. With some standards of A320 the power supplies for the standby instruments themselves would have been lost. The co-pilot carried out the abnormal checklist actions which appeared on the lower ECAM display, the only available electronic flight display. Most of the affected systems were restored after approximately 90 seconds, when the co-pilot selected the AC ESS FEED switch to ALTN.

It was concluded that the captain's PFD and ND and the upper ECAM display had blanked because of loss of the left electrical network (AC BUS 1), for reasons that could not be determined, despite extensive investigation. The reason for the coincident blanking or severe degradation of the co-pilot's displays could not be determined.

The AAIB made the following Safety Recommendation, among others, as a result of the investigation:

**‘Safety Recommendation 2007-067:** Airbus should conduct a study into the feasibility of automating the reconfiguration of the power supply to the AC Essential bus, in order to reduce the time taken to recover important aircraft systems on A320 family aircraft following the loss of the left electrical network.’

#### 1.18.6.3 Airbus A321, Registration G-OZBE

G-OZBE (MSN 1707) suffered an EPGS disturbance incident on 23 April 2007. Aircraft systems suffered major disruption as the aircraft was climbing to cruising altitude after departure from Las Palmas Airport, Canary Islands. The captain’s PFD and ND and one of the ECAM DUs blanked. The autopilot and autothrust disengaged and numerous caution, warning and crew action messages appeared. These did not make it apparent to the crew that there had been an EPGS failure.

Brief, intermittent reactivation of the blanked DUs hampered the crew in performing the ECAM actions. Both the co-pilot’s displays subsequently twice blanked momentarily. After an initial selection, the crew was unable to tune radio navigation aids manually. The flight crew was also unable to communicate with the cabin crew, until disturbance to cabin electrical systems prompted a cabin crew member to visit the flight deck. Following initial contact, the flight crew experienced major difficulties in communicating with ATC. The APU failed to start when selected on.

The flight crew declared an emergency and turned back to Las Palmas, in VMC above a layer of low cloud. A number of substantial aircraft yaw disturbances occurred after one of the drill items had been actioned. The low cloud ceased just before the airport and the crew made a visual approach to land. The captain’s PFD, ND and the upper ECAM DU became operational again shortly before landing. The aircraft landed safely, although above the specified maximum landing weight and with the nosewheel steering system inoperative. The ECAM Systems Display indicated a No 1 generator problem.

Examination and testing of the aircraft and of suspect EPGS components failed to reveal the fault responsible for the systems disruption, which could not be reproduced.

#### 1.18.6.4 Airbus A320-Series aircraft, US-Registered

The incident occurred to a US-registered aircraft on 25 January 2008. Immediately after takeoff, in day VMC, the captain's PFD and ND and the lower ECAM DUs blanked and multiple systems were lost or degraded, due to a suspected EPGS failure, causing significant operational difficulties for the crew. The incident is under investigation by the National Transportation Safety Board (NTSB) of the USA.

#### 1.18.7 Electrical System improvements

##### 1.18.7.1 Automatic transfer of AC ESS busbar feed

AAIB Special Bulletin S9/2006 on G-EZAC's incident, published 13 December 2006, made the following Safety Recommendation:

**Safety Recommendation 2006-143:** It is recommended that Airbus should introduce, for Airbus A320 series aircraft, a modification to automatically transfer the electrical feed to the AC Essential busbar in the event of the loss of the No 1 Main AC busbar.

On 31 May 2007, Airbus issued Service Bulletin A320-24-1120. Revision 01 was issued on 19 December 2007. The SB was optional and recommended modifications that would provide automatic reconfiguration of the power supply to the AC ESS and DC ESS busbars in the event of AC BUS 1 busbar loss. It categorised the modifications as 'Minor', denoting that they had no effect on airworthiness.

Airbus responded by letter on 17 July and 7 October 2008 to the recommendations made in AAIB Special Bulletin S9/2006. This stated, in relation to Safety Recommendation 2006-143, that the SB modification would be incorporated into the A320-series new-build standard in March 2007.

##### 1.18.7.2 GCU logic

AAIB Special Bulletin S9/2006 on G-EZAC's incident, published 13 December 2006, made the following Safety Recommendation:

**Safety Recommendation 2006-142:** It is recommended that Airbus should revise, for the A320 aircraft series, the fault monitoring logic of the Generator Control Unit to prevent the

monitoring system from incorrectly interpreting a fault within the GCU as an external system fault.

Following G-EZAC's incident, Hamilton Sundstrand proposed two possible changes to the GCU logic:

**GCU CT disagree fault protection:** This suggested change would provide the flight crew with a pre-flight alert to a discrepancy in the sensed IDG or Line CT current values. The proposal involved monitoring the difference between the IDG CT and Line CT current in each phase before the IDG came online. If the difference exceeded 20A for more than 160 ms the Generator Control Relay would be locked out, preventing the IDG from coming online and thus generating a GEN FAULT indication to the crew. An excessive current difference sensed while the IDG was online would continue to trigger the DP.

It appeared possible that the change could be included in a proposed upgrade to the GCU software, Standard 5.2, due to be released in the latter part of 2008 and to be recommended for retrofit at the next workshop visit of a GCU.

**Welded GLC Protection improvement:** A further proposed change involved monitoring the Line CT current, as well as the IDG CT current, and triggering the protection function only if both exceeded 25A in conditions when the GLC should be open.

Airbus stated in their response letters of 17 July and 7 October 2008 to the recommendations made in AAIB Special Bulletin S9/2006 that, in relation to Safety Recommendation 2006-142:

*'The origin of this event is a lack of robustness in the differential protection trip implemented in the GCU EMM [12], which has caused the loss of AC ESS bus bar. Such failure mode cannot occur on GCU non-EMM. Affected aircraft are with GCU PN 767584x (where x could be A through J). To address this AAIB SR, AIRBUS has developed a new GCU std. The main objective of this new GCU standard is to improve the robustness of the differential protection trip related to the "GLC welded" failure mode. On top of that, this standard will be used to implement other corrections and improvements such as the management of the FIRE trip protection reset logic, the PW bypass valve failure*

<sup>12</sup> Enhanced Manufacturing and Maintainability.

*BITE message and other specific improvements for Long Range aircraft (this GCU is common between SA and LR fleet). The standard GCU EMM 5.2 will be available for all SA A/C models with GCU EMM, and will be standard in production for A320 family. Through a MSCN an AIRBUS SB will be issued to cover this modification.'*

Airbus stated that the three improvements have been incorporated into Modification 39670 which is available for retrofit via Service Bulletin A320-24-1124.

#### 1.18.7.3 VHF radio system power supplies

AAIB Special Bulletin S9/2006 on G-EZAC's incident, published 13 December 2006, made the following Safety Recommendations:

**Safety Recommendation 2006-144:** It is recommended that Airbus should advise all operators of A320 series aircraft with Radio Telephony (RTF) communications reliant upon a single busbar of the consequent possibility of loss of all RTF communications.

**Safety Recommendation 2006-145:** It is recommended that, for A320 series aircraft with digital Audio Management Units, Airbus should take modification action aimed at ensuring that electrical power supplies required for Radio Telephony communications have an improved level of segregation.

Airbus stated in their response letters of 17 July and 7 October 2008 to the recommendations made in AAIB Special Bulletin S9/2006 that, in relation to Safety Recommendations 2006-144 and 2006-145:

*'AIRBUS has developed modification 37782 that consists of an improvement of the AMU power supply logic in order to keep the digital AMU audio functions in case of DC essential bus loss, as already provided with an analogue AMU. This modification is standard for production aircraft from MSN 3153. Associated AIRBUS MSB A320-23-1333 has been issued on May 9, 2007 and is currently at revision 2 dated February 18, 2008.'*

Airbus also stated that: ‘AIRBUS has issued FCOM TR 74 (issue 1 on March 2007, issue 2 on February 2008) to state on the loss of the VHF com in case of DC ESS BUS FAULT.’

#### **1.19 New investigation techniques**

No new techniques were used in this investigation.

## **2 Analysis**

### **2.1 Operational aspects**

#### **2.1.1 Crew qualifications, experience and training**

The two pilots were properly qualified and experienced in their respective roles to operate the flight. Both were adequately rested and had been on duty for 6 hours and 7 minutes when the incident started.

The pilots were not trained in how to respond to an electrical failure involving the unrecoverable loss of the AC BUS 1, AC ESS and other associated busbars, as this was not an anticipated failure mode. Nevertheless, they were able to manage the situation and continue safely to Bristol.

#### **2.1.2 Aircraft dispatch for the incident flight**

The aircraft was released for dispatch from Alicante in accordance with the approved procedures within the MEL. The engineer did not attempt to troubleshoot the No 1 generator fault; this is as expected given that the MEL did not require any such action to be performed prior to dispatch with the No 1 IDG inoperative.

Given the history of intermittent faults experienced on the A320-series EEPGS caused by GCU SRAM defects as described in the Airbus OIT issued in 2006, it is possible that maintenance personnel considered that the problem on the outbound flight was caused by an intermittent SRAM defect and was therefore not a significant issue.

#### **2.1.3 Effects of the failure**

The evidence shows that the loss of the AC BUS 1, AC ESS, DC ESS busbars and their dependant sub-busbars resulted in very widespread degradation or loss of multiple aircraft systems. This created an extremely demanding situation for the crew to manage. Following the failure, the commander, having lost his PFD and ND, handed over control to the co-pilot, whose displays were still available and who remained as PF. With the autopilot, flight director and autothrust unavailable, much of the co-pilot's capacity would have been absorbed with the task of manually flying the aircraft.

A serious electrical system disruption on an aircraft that is heavily reliant on electronics for most aircraft systems, such as the A320-series aircraft, will

inevitably have serious and widespread effects on many of the systems. The A320 EPGS design was considered acceptable because, in the event of loss of the AC ESS busbar, most of the affected systems would be restored by manually selecting the alternate feed, which Airbus considered would typically take around one minute. In-service experience has shown that on some occasions the changeover may take longer, or not be achieved at all, as in G-EZAC's case. In this case the aircraft was stable in the cruise in VMC conditions but the failure could equally have occurred in IMC conditions and at low level in a critical phase of flight, such as the approach to land. As TCAS operation was compromised, such a failure in congested airspace might also lead to an increased risk of collision with another aircraft. With the EGPWS also inoperative, there would be no warning of the risk of collision with terrain.

Other significant systems were affected, such as the cabin pressurisation system, where the automatic control function was no longer available. In this incident it did not cause the flight crew any difficulty, however had this failure occurred in other circumstances, the cabin altitude could increase excessively, requiring corrective action. The flight crew would then have to control the cabin pressure manually. Whilst the excessive cabin altitude warning would still operate, it would not be possible to deploy the passenger oxygen masks.

For these reasons, it was considered that the potential hazard of loss of the AC BUS 1, AC ESS and DC ESS busbars was more serious than the airworthiness authorities had assessed (loss of a single main generator channel was categorised as '*Minor*' - see Section 1.18.2, page 45).

A recommendation was made in AAIB Special Bulletin S9/2006, published on 13 December 2006, for Airbus to introduce a modification to automate the transfer of the electrical feed to the AC ESS busbar in the event of the loss of the AC BUS 1 busbar. The modification specified by the Airbus SB issued in 2007 provides such automatic reconfiguration for aircraft with either the Classic or Enhanced EPGS.

This modification is currently optional, but given the potentially serious safety implications of a delay or the inability to achieve manual AC Essential feed changeover, it is considered that the change should be mandated. The following Safety Recommendation is therefore made:

It is recommended that the EASA require modification of Airbus A320-series aircraft to provide automatic changeover of the electrical power feed to the AC Essential busbar in the event of de-energisation of the AC BUS 1 busbar. (**Safety Recommendation 2008-81**)

The EASA has responded formally to this Safety Recommendation, stating that they will mandate the installation of Airbus modification 37317 (SB A320-24-1120) by the issuance of an Airworthiness Directive.

#### 2.1.4 AC Essential busbar loss indication

It was intended that the lost Essential busbars would be restored by the crew manually operating the AC ESS FEED push-button on the EPGS control panel in response to the ECAM message. The FAULT caption in the push-button that should have been illuminated in these circumstances should have aided the crew in locating the correct button.

No evidence was available from the aircraft examination to explain the reports by both pilots that the caption was not illuminated, even though the ECAM message was present. Both the power supply for the caption and the trigger for the ECAM message are routed through the same relay. Testing uncovered no anomalies with the relay, and the caption power supply source (AC BUS 2) remained energised throughout the incident. There was therefore no apparent technical reason for the caption failing to illuminate.

#### 2.1.5 AC ESS FEED changeover selection

No evidence was found to explain the crew reports that operating the AC ESS FEED push-button selector had no effect. The system was subsequently found to operate normally and testing of the relevant components uncovered no defects in the system. However, it remained possible that a temporary anomaly, that was not repeated or uncovered, had prevented it from producing the expected effect.

Other possible explanations are that the wrong switch selection was made, or that the AC ESS FEED push-button was inadvertently pushed twice in rapid succession and thus accidentally set back to its original position before it had taken obvious effect. It has already been noted that the position of the button would provide no indication of the switch setting. However, no evidence was found to support either of these possibilities.

The reasons why the AC ESS electrical supply changeover did not occur with G-EZAC could not be established, but with a trained and experienced crew and relatively benign flight conditions, this was the case.

#### 2.1.6 AC ESS FEED push-button selector

The flight crew of G-EZAC considered it significant that the selected position of the push-button selector could not be readily determined from the physical position of the button, as its position did not change significantly, whether selected or deselected. The determination of the switch selection therefore relied on their being able to discern whether or not the caption was lit. This push-button design potentially lacks one of the basic functions of a selector, that of always providing a reliable, immediate and unmistakable indication of its selection.

Push-button selectors of this type are used in the flight deck of A320-series and other aircraft. The system design aimed to ensure that power supplies for the captions in the selectors would remain powered in any foreseeable failure scenario.

While such a design logic may seem acceptable, it has significant practical limitations. The selected positions of all the flight deck selectors should be apparent when the aircraft is operating normally, but in some failure situations the crew would not be able to determine the settings of many flight deck selectors, as the power supplies for the caption lights may have been lost. The loss of this ability could prove critical in failure situations where the aircraft's systems are extensively affected and the pilots are unclear as to the cause of the problem and the appropriate corrective actions. The following Safety Recommendation is therefore made:

It is recommended that the EASA and the FAA introduce certification requirements aimed at ensuring that flight deck control selectors are designed such that an immediate and unmistakable indication of the selected position is always provided to the flight crew. **(Safety Recommendation 2008-83)**

#### 2.1.7 Radio communication

The commander spent a significant amount of time trying to achieve radio contact with ATC, not realising that it would not be possible. This delayed his continuation of the ECAM actions. There was nothing in his previous training and no indications on the ECAM or elsewhere on the aircraft, including the documentation, that could have pointed to a complete loss of communication.

The commander was very concerned about the loss of communication and was anxious to avoid being intercepted by military aircraft because, given G-EZAC's degraded capability, he may not have been able to follow another aircraft. The risk of interception and possible offensive action was also a significant consideration in his decision to continue to Bristol. The prevailing aviation security climate has an impact on decisions made by flight crews and loss of radio communication thus assumes a greater degree of importance.

Two Safety Recommendations in relation to power supplies for the VHF radio systems were made in AAIB Special Bulletin S9/2006, published on 13 December 2006. In view of the potential hazard of a total communications loss given the current heightened aviation security environment, the following additional Safety Recommendations are therefore made:

It is recommended that the EASA requires the modification of affected Airbus A320-series aircraft so that the loss of a single busbar does not result in the complete loss of Radio Telephony communications. (**Safety Recommendation 2008-84**)

It is recommended that the EASA and the FAA re-categorise the loss of all Radio Telephony communications for public transport aircraft as 'Hazardous'. (**Safety Recommendation 2008-85**)

The time that the commander spent focussed on attempting to achieve radio communication delayed the completion of the remaining ECAM actions. As a result, it was 10 minutes before the transponder was switched to ATC 2 and the aircraft became visible again to Brest ATCC.

#### 2.1.8 Potential for collision

The Brest ATCC radar screens did not display primary returns. Thus, when G-EZAC's ATC 1 transponder lost power and the secondary radar data was lost, the aircraft disappeared from the radar controller's screens. The simultaneous loss of radio contact meant that the controllers had no means of knowing where the aircraft was, or what had happened to it. This situation, which lasted for some 10 minutes, caused them considerable concern and presented a significant distraction at the critical time of shift changeover.

As G-EZAC was no longer visible on the Brest radar screens, the radar controller did not realise at first that there was a possible conflict with AAL63, also at FL 320. When he did recognise the possibility of a conflict, he had no information as to whether he should climb or descend AAL63. He decided on

a descent and instructions were issued. However, there was then a discussion with AAL63 regarding the TCAS and the whereabouts of G-EZAC, which delayed AAL63's descent, increasing the potential risk of the two aircraft colliding.

The computations of the closest point of approach between the aircraft could not be exact but they indicated that, without intervention, they would have passed through the same airspace some 19 seconds apart. The absence of G-EZAC's ATC 1 transponder signal would have prevented AAL63's TCAS from detecting the conflict. As G-EZAC's TCAS was unpowered, no airborne collision avoidance protection was available. This is a further reason why an automatic changeover of the AC Essential busbar power supply is considered necessary.

## **2.2 Electrical Power Generation System**

### **2.2.1 Electrical Power Generation System behaviour**

#### **2.2.1.1 Electrical power disruption**

The evidence from crew reports, the PFR and the recorded data showed that the incident had resulted from de-energisation of AC BUS 1. The design configuration of the EPGS meant that the loss of AC BUS 1 inevitably caused immediate loss of the AC ESS and DC ESS busbars and the sub-busbars fed by them. DC BUS 1 probably also de-energised for a few seconds before then automatically recovering. The effects, in terms of the aircraft systems that were degraded or lost, were also consistent with the loss of AC BUS 1 and its dependant busbars and sub-busbars.

#### **2.2.1.2 Cause of AC BUS 1 loss**

The TSD obtained from GCU 1 during the investigation indicated that the loss of AC BUS 1 had resulted from IDG 1 tripping off-line because of operation of the Welded GLC Protection function. As well as de-exciting the IDG, this function locks out BTC 1, preventing it from closing, in order to protect the IDG from being back-fed with power from the feeder busbar. However, the BTC lockout also prevents AC BUS 1 and hence the ESS busbars, from automatically being fed from either IDG 2 or the APU generator.

### 2.2.1.3 No 1 Generator Control Unit defect

As GLC 1 was subsequently found to be fully serviceable, it was apparent that the Welded GLC trip by GCU 1 had been erroneous. Although standard acceptance testing passed GCU 1 as fully serviceable and fit for release back to service, during more extensive testing it was occasionally possible to reproduce the fault briefly. Eventually a defective contact in a transformer within the GCU circuitry was identified, which could intermittently cause erroneous sensing of the IDG Phase B current. The current could apparently either be sensed as zero at times when there was actually a current flowing, resulting in a DP trip, or at other times as a positive current when the actual current was zero, potentially resulting in a Welded GLC trip.

Thus it was concluded that both the DP trip on the outbound flight and the Welded GLC Protection trip on the incident flight were probably attributable to the defective GCU 1 transformer.

### 2.2.2 Master Minimum Equipment List

G-EZAC's incident made it evident that, in the configuration in which the aircraft was dispatched for the incident flight, a single fault in an apparently minor component can result in severe disruption of the EPGS and of multiple aircraft systems.

Such a situation is undesirable given the level of disruption involved, which could present a significant hazard to the aircraft in certain circumstances. Although no reports of directly comparable previous cases were obtained during the investigation, a substantial number of reported cases of DU blanking have been reported. These were frequently associated with EPGS disruption and in many cases the root cause could not be determined. The following Safety Recommendation is therefore made:

It is recommended that the EASA require Airbus to review the A320-series Master Minimum Equipment List (MMEL) for the validity of dispatch with an IDG inoperative, given that an intermittent fault in a Generator Control Unit can result in significant disruption of aircraft systems.  
**(Safety Recommendation 2008-86)**

The Operational Procedure specified before dispatch with an IDG inoperative did not include a check for correct functioning of the AC ESS FEED changeover. As the EPGS is vulnerable to an erroneous Welded GLC Protection trip in

this configuration, requiring a manual changeover of the AC ESS feed, it is considered that such a check would be beneficial. This would not only check the correct functioning of the changeover system, but also help to remind the crew of the location and function of the selector. The following Safety Recommendation is therefore made:

It is recommended that the EASA require Airbus to revise the A320-series Master Minimum Equipment List to include a requirement to check for correct operation of the manual AC ESS FEED changeover function prior to dispatch with a main generator inoperative. (**Safety Recommendation 2008-87**)

The MEL Operational Procedure required a check of the APU fuel pump but did not provide a reference to the relevant procedure, which was elsewhere in the FCOM. As a result this check was not carried out. However, this did not have any bearing on subsequent events and is therefore not discussed any further.

## 2.2.3 Electrical Power Generation System Background

### 2.2.3.1 Aircraft maintenance background

Whilst G-EZAC had experienced an appreciable number of EPGS problems in the two months or so prior to the incident, maintenance staff reported that this was not exceptional. No further details could be obtained on the event reported on 17 July 2006: *'AC experienced severe electrical interruptions. Re-settable then it became impossible'*, but the difficulties were apparently resolved by changing the GAPCU. Many of the defect reports particularly concerned the GAPCU. It appeared likely that defective SRAM devices had caused a number of the problems, including the problem with the No 1 GCU that was replaced the day before the incident. Apart from the GCU 1 fault and possibly the GAPCU fault, there was no evidence to indicate that any other EPGS faults had been present at the time of the incident. At the time of writing, G-EZAC had not experienced any further significant EPGS anomalies since this incident.

The IDG 1 CT/GCU 1 fault registered during the engine ground run after GCU 1 had been replaced on the morning of the incident flight prompted a GCU 1 reset. The system behaviour was then normal for the remainder of the ground run. This fault should have required a further GCU 1 replacement, but it is likely that maintenance staff considered the fault to be spurious. Once this fault had been cleared and did not recur, there would have been no apparent justification for another GCU 1 replacement.

### 2.2.3.2 No 1 Generator Control Unit background

It was notable that the GCU 1 fitted to G-EZAC at the time of the incident had previously been rejected from service on three occasions within a recent five month period. Although no significant information on two of the events was available, it was possible that all three rejections had resulted from the same intermittent fault that resulted in this incident.

At the time of this incident, the GCU manufacturer's overhaul and repair facility did not have a system in place to trigger an alert for units that had been repeatedly declared unserviceable. Additionally, the production acceptance testing did not necessarily identify intermittent faults, such that units could be released back to service, only for the fault to recur. The unit could again be categorised as NFF and declared serviceable, to repeat the cycle once again. In an example period around 29% of rejected GCUs were returned to service as NFF.

It can be very difficult to find an intermittent fault by bench testing, as was the case for G-EZAC's GCU 1. However, it appeared that relatively simple measures, such as recording the fault codes stored in each unit sent for repair and tracking a unit's rejection history and previous faults might be effective in breaking the cycle. The following Safety Recommendations are therefore made:

It is recommended that Hamilton Sundstrand modifies its repair and overhaul procedures to ensure that a unit with an excessive service rejection rate or a recurrent fault is not repeatedly released back to service. **(Safety Recommendation 2008-88)**

It is recommended that the EASA and the FAA require that approved component repair organisations have procedures in place to identify units with an excessive service rejection rate or recurrent faults. **(Safety Recommendation 2008-89)**

### 2.2.3.3 GAPCU defect

Examination of the GAPCU after it had failed a bench test revealed severe electrical overheat damage to the three conductors used for external power monitoring. Static discharge resulting from connection of a GPU to the aircraft without the normal GPU/aircraft earth connection present, or lightning strike effects, appeared the most likely cause. The operator reported that the aircraft initially accepted ground power, after having shut

down at Bristol following the incident. While this could not be positively confirmed, it suggested that the damage had probably occurred after the incident.

The damage would have prevented the GAPCU from accepting external power onto the aircraft, as occurred during the post-incident ground testing. However, the defect did not appear to affect any other GAPCU functions and had no effect during the testing of the transfer of the AC ESS busbar feed from AC BUS 1 to AC BUS 2. No connection between the GAPCU damage and the GCU 1 defect could be found, and no effect on the functioning of the EPGS, with the exception of ground power acceptance, seemed possible.

## 2.2.4 Electrical Power Generation System improvement

### 2.2.4.1 Monitoring improvements

As previously noted, a Welded GLC Protection trip can have serious effects on the EPGS, and AAIB Special Bulletin S9/2006 recommended improvements aimed at preventing erroneous operation of the function. The EPGS supplier proposed two related changes to GCU logic, namely the addition of GCU CT Disagree Fault Protection alerting and the addition of Line CT current monitoring to the Welded GLC Protection detection function. It appeared possible, subject to detailed consideration by specialists, that these measures could significantly improve the GCU fault monitoring logic.

Following a Safety Recommendation for Airbus to revise the GCU fault monitoring logic, made in AAIB Special Bulletin S9/2006, published on 13 December 2006, Airbus has stated that an updated GCU software standard has been developed. In view of the defective GCU logic revealed by the investigation into G-EZAC's incident, the following additional Safety Recommendation is made:

It is recommended that the EASA require improvements to the fault monitoring logic of the type of Generator Control Unit (GCU) used on A320-series aircraft with the aim of preventing the monitoring system from incorrectly interpreting a fault within the GCU as an external system fault. (**Safety Recommendation 2008-90**)

## 2.3 Airworthiness Considerations

### 2.3.1 Failure Modes and Effects Analysis

The de-energisation of AC BUS 1 causes extensive effects on the electrical power system and consequently on multiple aircraft systems. The aircraft manufacturer's theoretical failure analyses assumed that flight crews would always achieve AC Essential Feed changeover in a timely manner. However, if this is not achieved, the aircraft continues to operate in a significantly degraded condition, one that appears not to have been fully considered during aircraft certification.

This incident shows that this assumption does not always hold true and therefore suggests that such analyses should consider the effects of a delayed or non-achieved flight crew action.

The current aircraft certification requirements specify that any failure analysis must consider *'the effect of reasonably anticipated crew errors after the occurrence of a failure...'*, but do not require consideration of a delayed crew action or the inability to complete the required crew action.

Therefore the following Safety Recommendation is made:

It is recommended that the EASA extend the guidance material provided for the EASA 25-1309 certification standard for failure effect analyses, to include consideration of the effects of delayed or non-achieved crew actions, in addition to crew errors. **(Safety Recommendation 2009-063)**

## 2.4 Flight recorders

### 2.4.1 Recorder technology

#### 2.4.1.1 CVR power supply

Analysis of the MEL procedure performed prior to dispatch from Alicante clearly identified both the flight crew actions and the audible operation of the electrical contactors. Loss of the CVR recording after the loss of the DC ESS SHED busbar led to a significant loss of evidence that might have assisted this investigation. Also, with the loss of radio communications, interpretation of the flight crew actions was based purely on the crew's recollections, without the benefit of ATC voice recordings.

This incident highlighted yet another case where the installation of RIPS would have benefited the investigation. G-EZAC was not required to be fitted with a RIPS as it was certified prior to development of ED112. As a technical and operating standard currently exist, and steps are in place to implement RIPS, albeit over a significant time period, a Safety Recommendation from the AAIB was not considered necessary.

#### 2.4.1.2 Cockpit image recording

Additional recorded information that would have assisted this investigation included:

- fault light indications on the overhead panel
- ECAM messages and how these messages were then actioned by the flight crew
- evidence of any electrical power switching and APU GEN operation

During this and a number of previous investigations, the AAIB has been unable to reconcile crew recollections of cockpit indications and switch positions with those recorded by the FDR. The FDR does not record all the information displayed to the flight crew on the cockpit displays, nor does it record all switch positions.

An effective solution would be difficult to implement with the current recording technology and the cost is likely to be prohibitive. An alternative solution is the provision of cockpit image recording. Recorded images, coupled with the FDR data, would allow accident investigators to better understand what was being displayed to the flight crew, what crew actions were taken and their resultant effects on the aircraft systems.

Although the benefits of cockpit image recording have been accepted by accident investigators, the likely political and privacy issues will make the implementation of such a system challenging. As yet RIPS has not been considered for cockpit image recording systems.

### **3 Conclusions**

#### **3.1 Findings**

1. The flight crew involved in the incident were licensed and qualified to operate the flight and were in compliance with the applicable flight time and duty time limitations.
2. The aircraft held a valid Certificate of Airworthiness and was maintained in accordance with an EASA-approved maintenance programme.
3. A reset of the No 1 generator control unit during maintenance carried out prior to despatch of the aircraft from London Stansted was technically incorrect but in accordance with common general practice.
4. The No 1 engine-driven generator tripped off-line on the flight sector between Stansted and Alicante and would not reset.
5. The aircraft was despatched from Alicante on the incident flight with the APU generator substituting for the No 1 generator, in accordance with the operator's MEL, which reflected the manufacturer's MMEL.
6. The MMEL did not require the reason for the No 1 generator trip to be investigated prior to dispatch.
7. The Operational Procedure in the MMEL did not contain the associated procedure for a check of the APU fuel pump.
8. While in the cruise at FL 320 in VMC, the aircraft suffered severe disruption of the electrical power system, causing multiple aircraft systems either to cease operating or to become degraded, significantly increasing the flight crew's workload.
9. All means of radio communications became inoperative and remained so because they all relied on a single busbar which de-energised and was unavailable for the remainder of the flight.
10. The loss of all means of radio communications caused the crew considerable concern and delayed their continuation of the ECAM actions.

11. G-EZAC's transponder signal was lost for about 10 minutes, during which time the aircraft was not visible to Brest ATCC radar, leading to reduced separation with another aircraft.
12. The loss of power supply to the ATC 1 transponder rendered the TCAS inoperative until the ATC 2 transponder was selected some 10 minutes later.
13. Despite the pilots' attempts to follow the ECAM action messages, many of the affected aircraft systems were not recovered.
14. The flight crew reported that no captions were visible in the AC ESS FEED push-button selector switch and that operation of the switch failed to reconfigure the power supply with the result that power to the left electrical network could not be restored in flight. During subsequent testing on the ground, the system was found to operate normally.
15. The flight crew could not determine the settings of certain flight deck push-button selectors as the button position did not change significantly with selection and the caption lights were not visible.
16. The CVR ceased to operate following the loss of the AC ESS SHED busbar.
17. The FDR did not record any switching of the AC BUS 2-to-AC ESS contactor throughout the flight.
18. The potential effect of loss of all three VHF radios was categorised by the airworthiness authorities as 'Major' but, in the current security climate, was judged to be more severe.
19. An intermittent fault was found in an electronic component of the No 1 generator control unit (GCU 1) which probably caused the No 1 generator trip on the outbound flight.
20. Recurrence of the GCU 1 fault during the incident flight probably caused the de-energisation of AC BUS 1 and the consequent severe electrical system disruption.
21. The GCU 1 had repeatedly been rejected from service prior to the incident, possibly because of recurrence of the same intermittent fault, and returned to service without the fault having been found, but still present.

22. No effective system aimed at identifying units repeatedly rejected from service and not found to be faulty, or units suffering repetitive faults, was in place at the GCU manufacturer's repair organisation.

### **3.2 Causal factors**

The investigation identified the following causal factors in this incident:

1. An intermittent fault in the No 1 Generator Control Unit, which caused the loss of the left electrical network
2. An aircraft electrical system design which required manual reconfiguration of the electrical feed to the AC Essential busbar in the event of de-energisation of the No 1 AC busbar, leading to the loss or degradation of multiple aircraft systems, until the electrical system is reconfigured
3. The inability of the flight crew to reconfigure the electrical system, for reasons which could not be established
4. Master Minimum Equipment List provisions which allowed dispatch with a main generator inoperative without consideration of any previous history of electrical system faults on the aircraft
5. Inadequate measures for identifying Generator Control Units repeatedly rejected from service due to repetition of the same intermittent fault

## 4 Safety Recommendations

Four Safety Recommendations were made in AAIB Special Bulletin S9/2006, published 13 December 2006, as follows:

- 4.1 **Safety Recommendation 2006-142:** It is recommended that Airbus should revise, for the A320 aircraft series, the fault monitoring logic of the Generator Control Unit to prevent the monitoring system from incorrectly interpreting a fault within the GCU as an external system fault.
- 4.2 **Safety Recommendation 2006-143:** It is recommended that Airbus should introduce, for Airbus A320-series aircraft, a modification to automatically transfer the electrical feed to the AC Essential busbar in the event of the loss of the No 1 Main AC busbar.
- 4.3 **Safety Recommendation 2006-144:** It is recommended that Airbus should advise all operators of A320 series aircraft with Radio Telephony (RTF) communications reliant upon a single busbar of the consequent possibility of loss of all RTF communications.
- 4.4 **Safety Recommendation 2006-145:** It is recommended that, for A320 series aircraft with digital Audio Management Units, Airbus should take modification action aimed at ensuring that electrical power supplies required for Radio Telephony communications have an improved level of segregation.

This report makes 10 further Safety Recommendations:

- 4.5 **Safety Recommendation 2008-81:** It is recommended that the EASA require modification of Airbus A320-series aircraft to provide automatic changeover of the electrical power feed to the AC Essential busbar in the event of de-energisation of the AC BUS 1 busbar.
- 4.6 **Safety Recommendation 2008-83:** It is recommended that the EASA and the FAA introduce certification requirements aimed at ensuring that flight deck control selectors are designed such that an immediate and unmistakable indication of the selected position is always provided to the flight crew.
- 4.7 **Safety Recommendation 2008-84:** It is recommended that the EASA requires the modification of affected Airbus A320-series aircraft so that the loss of a single busbar does not result in the complete loss of Radio Telephony communications.

- 4.8 Safety Recommendation 2008-85:** It is recommended that the EASA and the FAA re-categorise the loss of all Radio Telephony communications for public transport aircraft as ‘Hazardous’.
- 4.9 Safety Recommendation 2008-86:** It is recommended that the EASA require Airbus to review the A320-series Master Minimum Equipment List (MMEL) for the validity of dispatch with an IDG inoperative, given that an intermittent fault in a Generator Control Unit can result in significant disruption of aircraft systems.
- 4.10 Safety Recommendation 2008-87:** It is recommended that the EASA require Airbus to revise the A320-series Master Minimum Equipment List to include a requirement to check for correct operation of the manual AC ESS FEED changeover function prior to dispatch with a main generator inoperative.
- 4.11 Safety Recommendation 2008-88:** It is recommended that Hamilton Sundstrand modifies its repair and overhaul procedures to ensure that a unit with an excessive service rejection rate or a recurrent fault is not repeatedly released back to service.
- 4.12 Safety Recommendation 2008-89:** It is recommended that the EASA and the FAA require that approved component repair organisations have procedures in place to identify units with an excessive service rejection rate or recurrent faults.
- 4.13 Safety Recommendation 2008-90:** It is recommended that the EASA require improvements to the fault monitoring logic of the type of Generator Control Unit (GCU) used on A320-series aircraft with the aim of preventing the monitoring system from incorrectly interpreting a fault within the GCU as an external system fault.
- 4.14 Safety Recommendation 2009-063:** It is recommended that the EASA extend the guidance material provided for the EASA 25-1309 certification standard for failure effect analyses, to include consideration of the effects of delayed or non-achieved crew actions, in addition to crew errors.

R G Ross  
Principal Inspector of Air Accidents  
Air Accidents Investigation Branch  
Department for Transport  
July 2009

**Appendix 1****Effects on Aircraft Systems of Loss of AC BUS 1, AC ESS and DC ESS busbars**

Information from the A319 Flight Crew Operating Manual (FCOM) indicated that de-energisation of AC BUS 1, AC ESS, AC ESS SHED, DC ESS and DC ESS SHED busbars would disable or degrade the following components or systems (other systems may also be indirectly affected):

**AC BUS 1**

1. Blue hydraulic pump
2. Blue hydraulic system
3. Spoiler 3 on both wings
4. Air Data Reference System (ADR) 3
5. Radio Altimeter (RA)1
6. Captain TAT
7. Left windshield heater
8. Left window heater
9. Thrust Reverser 1
10. Left & Right Fuel tank pump 1
11. Centre tank pump 1
12. Vent blower
13. Galley fan
14. Cargo vent
15. Nosewheel steering
16. Main galley
17. Braking and Steering System (BSCU) 1
18. Display Management Computer (DMC) 3
19. Ground Proximity Warning System (GPWS)
20. CAT 3 landing capability
21. Lavatory smoke detector
22. Left cabin fan
23. Radar 1
24. Standby pitot / AOA sensors
25. Air Traffic Service Unit (ATSU)
26. Engine 1 Ignition system B
27. Engine Vibration Monitoring Unit (EVMU) for both engines
28. Cockpit printer
29. Air conditioning controller lane A
30. Hydraulic quantity indication
31. Traffic alert and Collision Avoidance System (TCAS)
32. Slat operation will be slower than normal
33. HF 1

**Appendix 1****AC ESS and AC ESS SHED**

1. Air Data Reference System (ADR) 1
2. Instrument Landing System (ILS) 1
3. GPS 1
4. Rudder trim system 1
5. Rudder travel limiter system 1
6. CAT 2 landing capability
7. System Data Acquisition Concentrator (SDAC) 1
8. Captain's pitot
9. Captain's Angle of Attack (AOA)
10. Ground Proximity Warning System (GPWS)
11. Yaw damper 1
12. Flight Warning Computer (FWC) 1
13. Display Management Computer (DMC) 1
14. Engine 1 and 2 ignition system A
15. Radio Management Panel Lighting
16. VOR 1
17. MCDU 1
18. Captain's Primary Flight Display (PFD)
19. Captain's Navigation Display (ND)
20. Cockpit Voice Recorder (CVR)
21. ECAM Upper display
22. ATC 1
23. DME 1
24. HF 1
25. Digital Distance and Radio Magnetic Detector (DDRMI)
26. APU fuel pump
27. Passenger oxygen masks (auto and manual deployment)
28. ADF 1
29. CAT 1 landing only

**DC ESS**

1. Engine Master Levers (EML)
2. Blue Hydraulic system
3. Spoiler 3, both wings
4. VHF 1
5. Audio Control Panels (ACP) 1 and 2
6. Wing anti-ice
7. Autopilot 1

**Appendix 1**

8. Autothrust
9. Fuel Control Unit (FCU) 1
10. Flight Augmentation Computer (FAC) 1
11. Left fuel tank pump 1
12. Right fuel tank pump 1
13. Thrust Reverser 2
14. Engine 2 start
15. Cabin pressure system 1
16. Vent extract
17. Blue electric pump
18. Ground Proximity Warning System (GPWS)
19. Engine 1 loop A
20. Engine 2 loop B
21. Flight Control Data Concentrator (FCDC) 1
22. CAT 3 landing capability
23. Cockpit brake pressure indicator
24. Flight interphone
25. Engine Interface Unit (EUI) 2 – autothrust, engine start and thrust reverser
26. Avionics air conditioning valve
27. Standby compass light
28. HP fuel shutoff valves
29. Slats and Flaps Control Computer (SFCC) 1
30. Radio Management Panel (RMP) 1
31. Hydraulic fire valves for both engines
32. Ram air inlet
33. ECAM control panel
34. Left loudspeaker
35. ECAM status will display CAT 3 SINGLE whereas actual landing capability is CAT 2

**DC ESS SHED**

1. Cabin oxygen mask automatic drop
2. Cross-bleed valve manual control
3. Cabin Intercommunication Interface System (CIDS) 1 smoke detection
4. Standby ALTI vib
5. Crew oxygen valve
6. Flight Management and Guidance Computer (FMGC) 1
7. Bleed Monitoring Computer (BMC) 1
8. Fuel Quantity (FQ) 1 channel 1

**RECENT FORMAL AIRCRAFT ACCIDENT AND INCIDENT REPORTS  
ISSUED BY THE AIR ACCIDENTS INVESTIGATION BRANCH**

**THE FOLLOWING REPORTS ARE AVAILABLE ON THE INTERNET AT  
<http://www.aaib.gov.uk>**

2/2008	Airbus A319-131, G-EUOB during the climb after departure from London Heathrow Airport on 22 October 2005.	January 2008
3/2008	British Aerospace Jetstream 3202, G-BUVC at Wick Aerodrome, Caithness, Scotland on 3 October 2006.	February 2008
4/2008	Airbus A320-214, G-BXKD at Runway 09, Bristol Airport on 15 November 2006.	February 2008
5/2008	Boeing 737-300, OO-TND at Nottingham East Midlands Airport on 15 June 2006.	April 2008
6/2008	Hawker Siddeley HS 748 Series 2A, G-BVOV at Guernsey Airport, Channel Islands on 8 March 2006.	August 2008
7/2008	Aerospatiale SA365N, G-BLUN near the North Morecambe gas platform, Morecambe Bay on 27 December 2006.	October 2008
1/2009	Boeing 737-81Q, G-XLAC Avions de Transport Regional ATR-72-202, G-BWDA, and Embraer EMB-145EU, G-EMBO at Runway 27, Bristol International Airport on 29 December 2006 and 3 January 2007.	January 2009
2/2009	Boeing 777-222, N786UA at London Heathrow Airport on 26 February 2007.	April 2009
3/2009	Boeing 737-3Q8, G-THOF on approach to Runway 26, Bournemouth Airport, Hampshire on 23 September 2007.	May 2009