

ATTACHMENT 1

To Airworthiness Group Factual Report

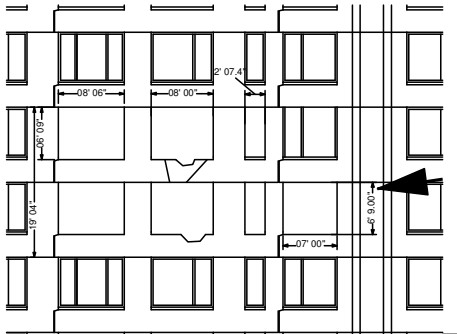
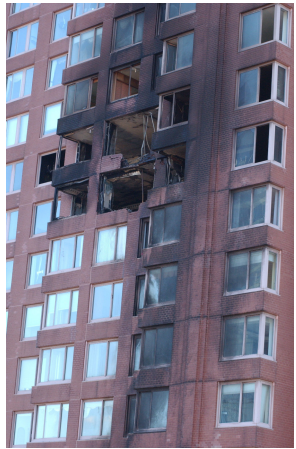
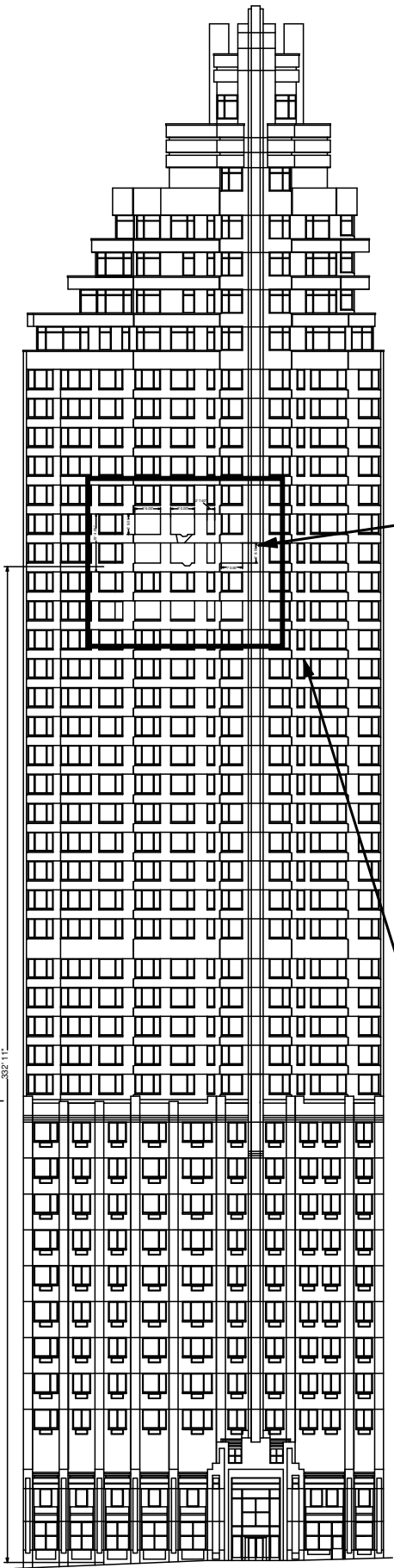
DCA07MA003

Wreckage Diagram

# NYPD Crime Scene Unit



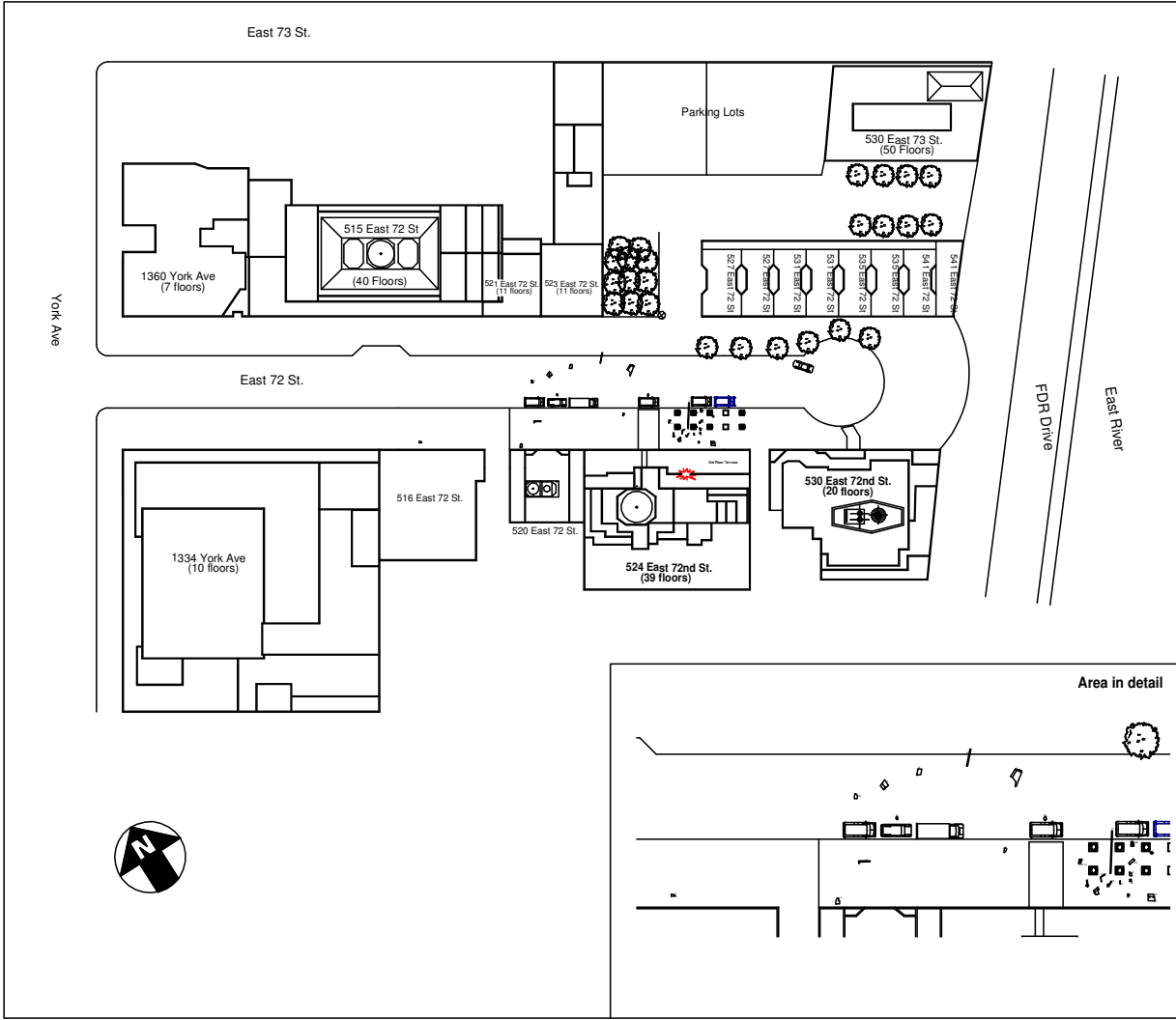
- ⊕ MAIN ROOF & BELTWAY LEVEL
- ⊕ 42ND FLOOR (PENHOUSE 4)
- ⊕ 41ST FLOOR (PENHOUSE 3)
- ⊕ 40TH FLOOR (PENHOUSE 2)
- ⊕ 39TH FLOOR (PENHOUSE 1)
- ⊕ 38TH FLOOR (40TH FLOOR)
- ⊕ 37TH FLOOR (41TH FLOOR)
- ⊕ 36TH FLOOR (42TH FLOOR)
- ⊕ 35TH FLOOR (43RD FLOOR)
- ⊕ 34TH FLOOR (44TH FLOOR)
- ⊕ 33RD FLOOR (45TH FLOOR)
- ⊕ 32ND FLOOR (46TH FLOOR)
- ⊕ 31ST FLOOR (47TH FLOOR)
- ⊕ 30TH FLOOR (48TH FLOOR)
- ⊕ 29TH FLOOR (49TH FLOOR)
- ⊕ 28TH FLOOR (50TH FLOOR)
- ⊕ 27TH FLOOR (51ST FLOOR)
- ⊕ 26TH FLOOR (52ND FLOOR)
- ⊕ 25TH FLOOR (53RD FLOOR)
- ⊕ 24TH FLOOR (54TH FLOOR)
- ⊕ 23RD FLOOR (55TH FLOOR)
- ⊕ 22ND FLOOR (56TH FLOOR)
- ⊕ 21ST FLOOR (57TH FLOOR)
- ⊕ 20TH FLOOR (58TH FLOOR)
- ⊕ 19TH FLOOR (59TH FLOOR)
- ⊕ 18TH FLOOR (60TH FLOOR)
- ⊕ 17TH FLOOR (61TH FLOOR)
- ⊕ 16TH FLOOR (62TH FLOOR)
- ⊕ 15TH FLOOR (63RD FLOOR)
- ⊕ 14TH FLOOR CONDOMINIUM HOSPITAL (64TH FLOOR)
- ⊕ 13TH FLOOR (65TH FLOOR)
- ⊕ 12TH FLOOR (66TH FLOOR)
- ⊕ 11TH FLOOR (67TH FLOOR)
- ⊕ 10TH FLOOR (68TH FLOOR)
- ⊕ 9TH FLOOR (69TH FLOOR)
- ⊕ 8TH FLOOR (70TH FLOOR)
- ⊕ 7TH FLOOR (71TH FLOOR)
- ⊕ 6TH FLOOR (72TH FLOOR)
- ⊕ 5TH FLOOR (73TH FLOOR)
- ⊕ 4TH FLOOR (74TH FLOOR)
- ⊕ 3RD FLOOR (75TH FLOOR)
- ⊕ 2ND FLOOR (76TH FLOOR)
- ⊕ 1ST FLOOR (77TH FLOOR)
- ⊕ 0TH FLOOR (78TH FLOOR)



Area in detail

North Face

Crime Scene Run# 06/1142C  
 524 East 72nd Street  
 Investigate plane crash  
 10/11/06 19th Pct  
 Det. Dingman #6450 Assigned  
 Det. Boston #313 Assisting



**NYPD  
CRIME SCENE UNIT**

**CSU Run#06/1142C**  
**10/12/06** 19pct  
**Investigate Plane Crash**  
**524 E. 72nd St.**  
**Det. Dingman #6450 Assigned**  
**Det. Boston #313 Assisting**

- LEGEND:(Plane parts)**
- 1 Outboard tip left wing
  - 2 Right Ailron
  - 3 Right wing tip
  - 4 Left door
  - 5 Left Elevator
  - 6 Engine cowling
  - 7 Left wing tip
  - 8 Lower lft. engine cowling
  - 9 Lower lft wing tip
  - 10 Lower pilot left door
  - 11 Left Gear
  - 12 Directional gyro
  - 13 HSI
  - 14 Right elevator
  - 15 Right flap
  - 16 Right landing gear
  - 17 Wing spar
  - 18 Fuselage bulkhead 222
  - 19 Rudder
  - 20 Left Aileron
  - 21 Jack screw
  - 22 Fire wall
  - 23 Right door
- Not To Scale**

**MEASUREMENTS:**

332' 10" from ground to bottom of crash hole  
 350' 10" from ground to top of crash hole  
 30' 00" from ground to 3rd floor terrace  
 154' 10" from ground to 22nd floor terrace