



## **NATIONAL TRANSPORTATION SAFETY BOARD**

Office of Aviation Safety  
Washington, D.C. 20594

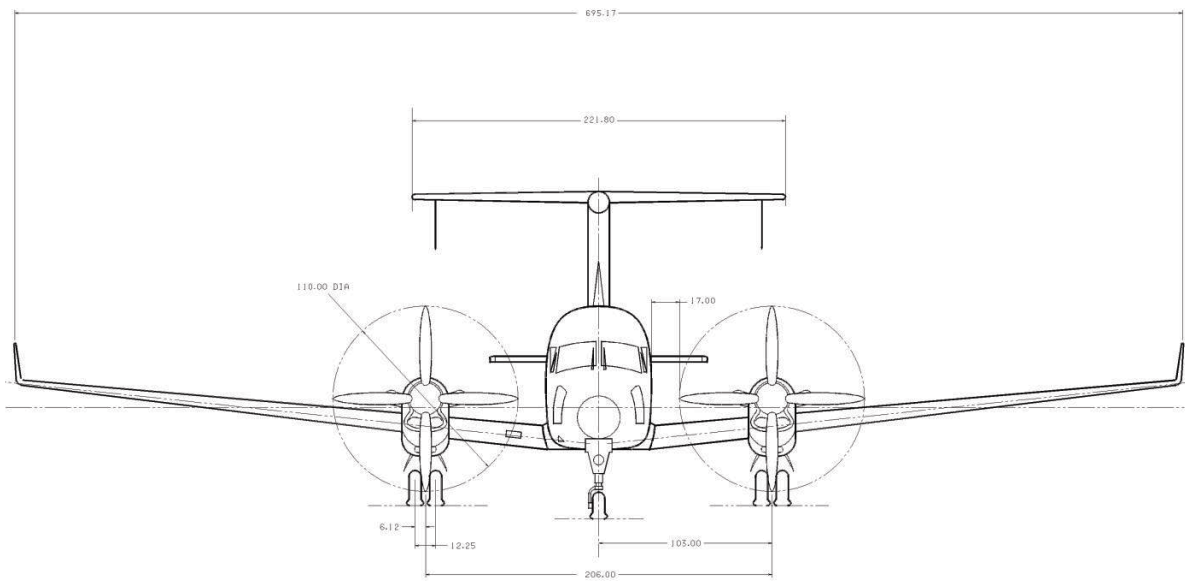
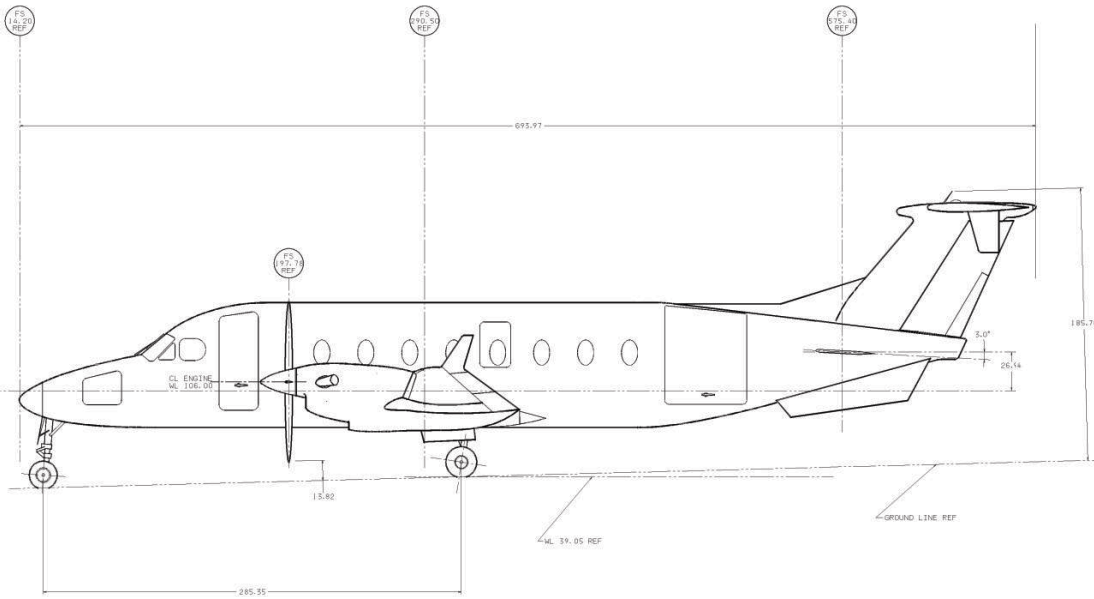
October 21, 2014

# **AIRWORTHINESS**

**Group Chairman's Factual Report**

**DCA13FA148**

**Appendix A – Figures  
(4 pages)**



**Figure 1 – Beech 1900D airplane**



Figure 2 – N169GL Landing Gear Controls

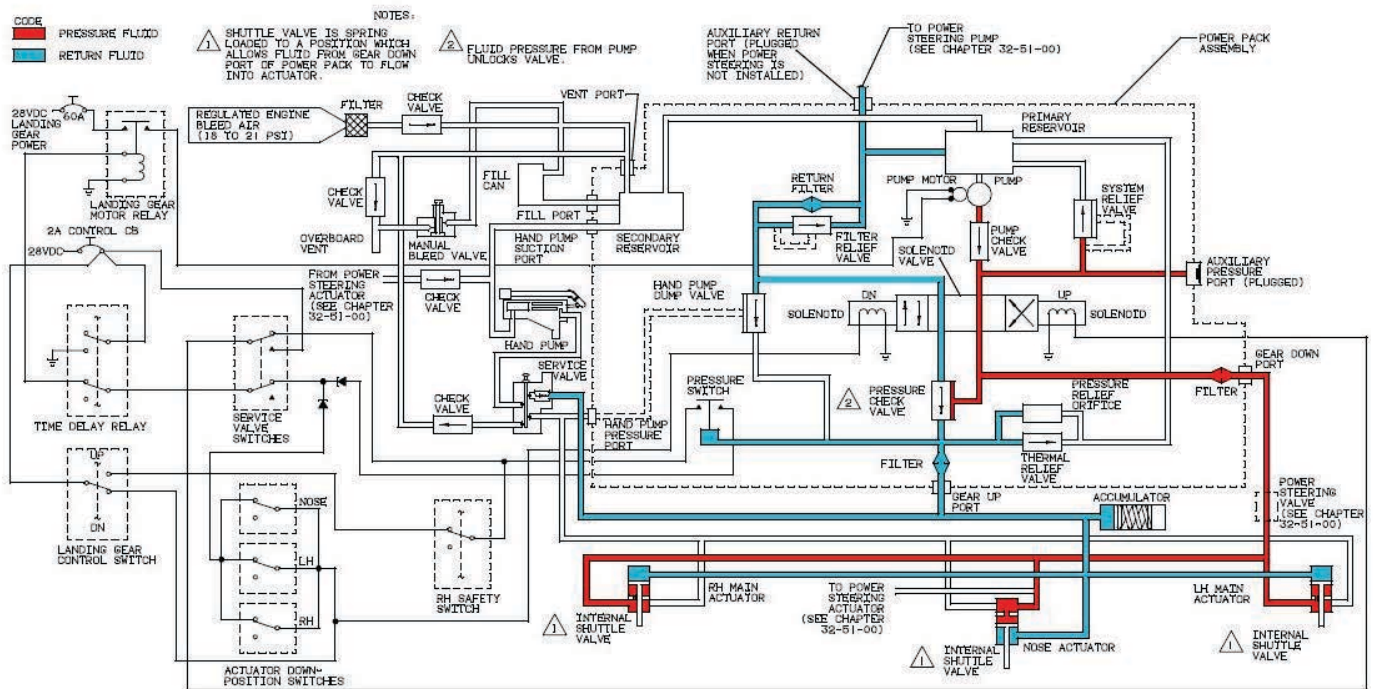
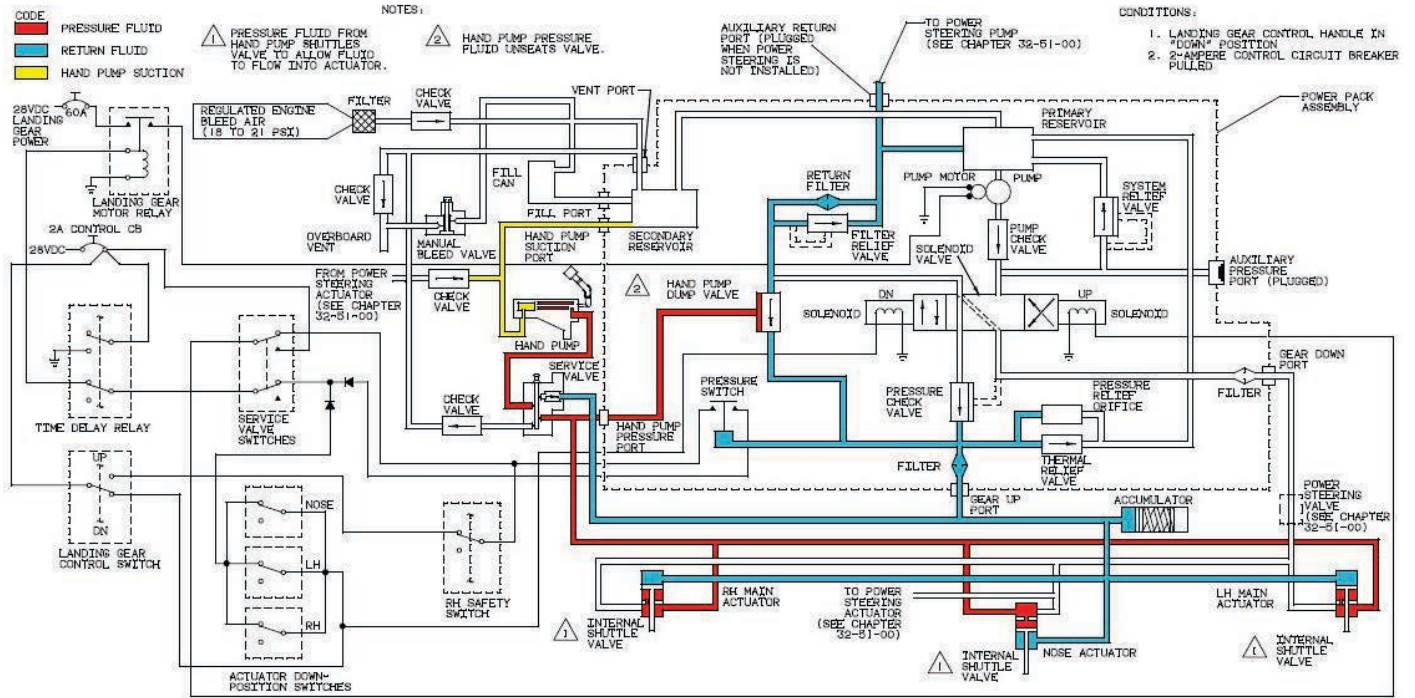


Figure 3 – Hydraulic system schematic – normal extend mode



**Figure 4 – Hydraulic system schematic – emergency extend mode**



**Figure 5 – LMLG Actuator Leak**



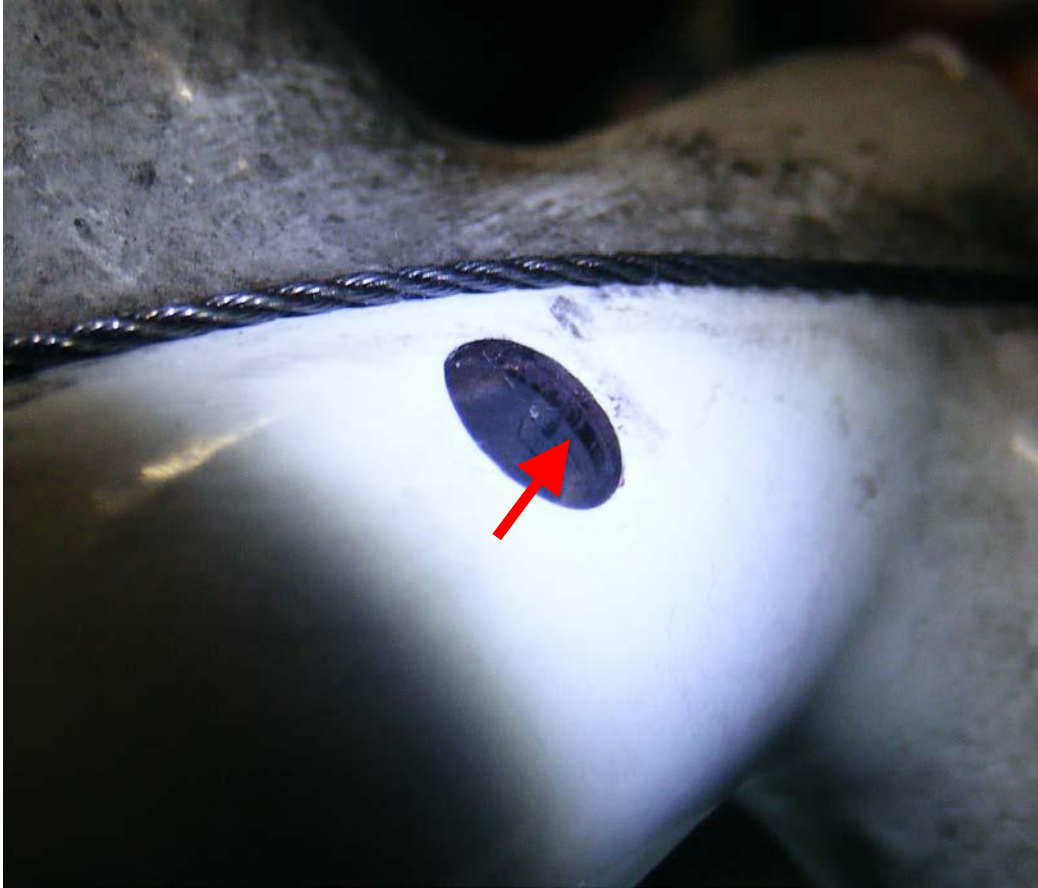
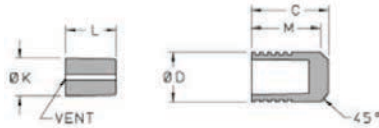


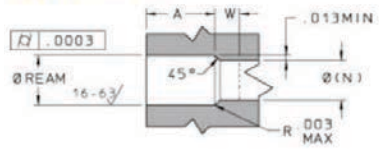
Figure 6 – Damage noted in Lee plug hole

Ø 218 Aluminum Lee Plug® - Short Syle  
PLGA2180010A

**Pin/Plug**



**Installation Hole**



SPECIFICATIONS	
Material	Aluminum
Nominal Plug Diameter (inches)	0.218
Weight (grams)	.30
PIN & PLUG DIMENSIONS	
Plug (D) Max. (inches)	.2187
Plug (D) Min. (inches)	.2178
Plug (C) Nom. (inches)	.187
Plug (M) Nom. (inches)	.167
Pin (K) Nom. (inches)	.179
Pin (L) Nom. (inches)	.145
PROOF PRESSURE	
Proof Pressure (Class 1) (psi)	8000
Proof Pressure (Class 2) (psi)	9000
Maximum Proof Pressure (Class 3) (psi)	10000
REAM DIAMETER	
Ream Diameters Class 1 (inches)	.2187 - .2212
Ream Diameters Class 2 (inches)	.2187 - .2202
Ream Diameters Class 3 (inches)	.2187 - .2192
INSTALLATION HOLE DIMENSIONS	
W Min. (inches)	.125
A Min. (inches)	.187
Passage - N Dia. Ref. (inches)	.187
D Min. (inches)	.2178
MATERIALS	
Pin & Plug Materials	2024-T4 or T351 aluminum per SAE AMS-QQ-A-225/6
Finish (Pin)	Alodine Yellow per MIL-DTL-5541 & Wax
Finish (Plug)	Anodize Green per MIL-A-8625 Type II B

Figure 7 – Lee plug specifications