

DCA01MA034
March 29, 2001
Aspen, CO

NATIONAL TRANSPORTATION SAFETY BOARD
Washington, D.C.

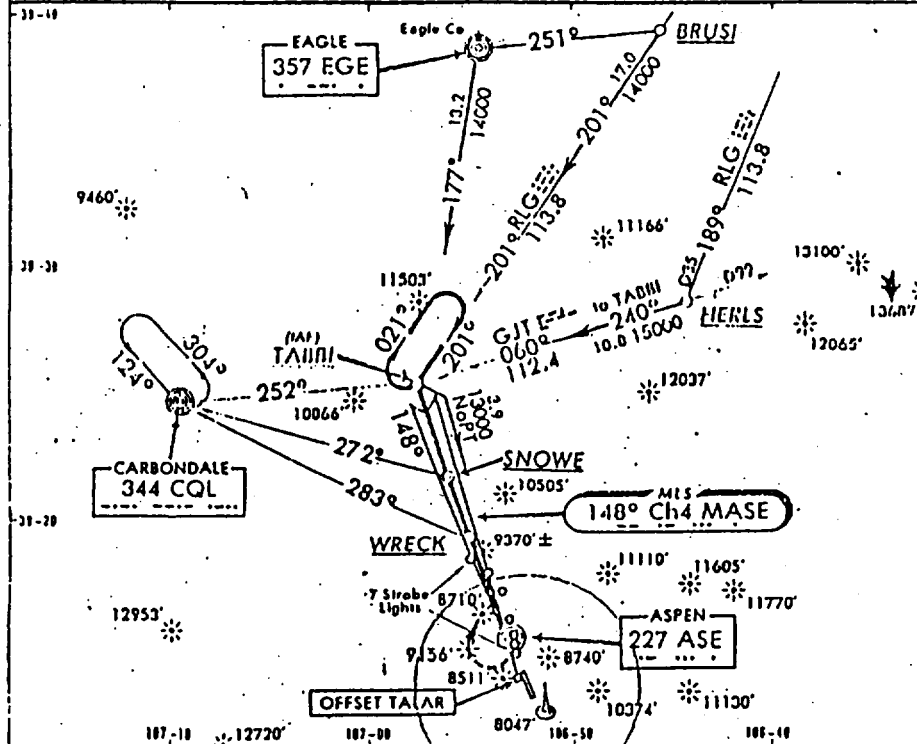
ATTACHMENT 8

**LDIN Documentation
(Diagrams)**

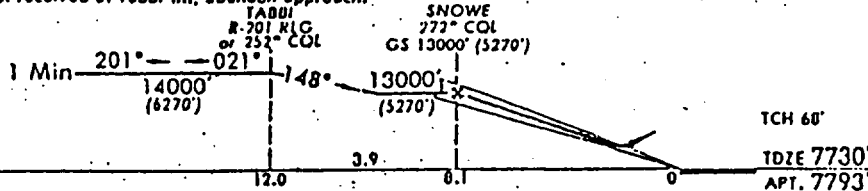
(2 pages)

DENVER Class 128.5
 ASPEN Tower 118.4 (OP NOT CONT)
 Ground 121.9
 EAGLE Radio 122.2 123.6

PITKIN CO
 MLS Rwy 15
 Channel 4 MASE
 Apt. Elev 7793'



NOTE: Procedure approved for S10L aircraft only. TALAR is offset 2° and crosses extended runway centerline 3092' from threshold. High rates of climb and descent required. If TALAR not received at Tabbii Int, abandon approach.



MISSED APPROACH (Climb of 300'/NM required to 13000'). Climb STRAIGHT AHEAD to ASE NDB; then climbing RIGHT turn via 320° bearing from ASE NDB to WRECK INT; LEFT turn climbing to 13000' via 203° course to CQL NDB and hold.

STRAIGHT-IN LANDING RWY 15						CIRCLE-TO-LAND	
MLS						MORA	
DH 8985'(1255')						9260'(1467)-2	
A	2					B	9660'(1887)-2
B						C	NA
C	NA					D	NA
D							
Gnd speed-Kts		70	90	100	120	140	160
GS		6.00°	759	976	1084	1301	1518

ASPEN, COLO
-PITKIN CO/SARDY

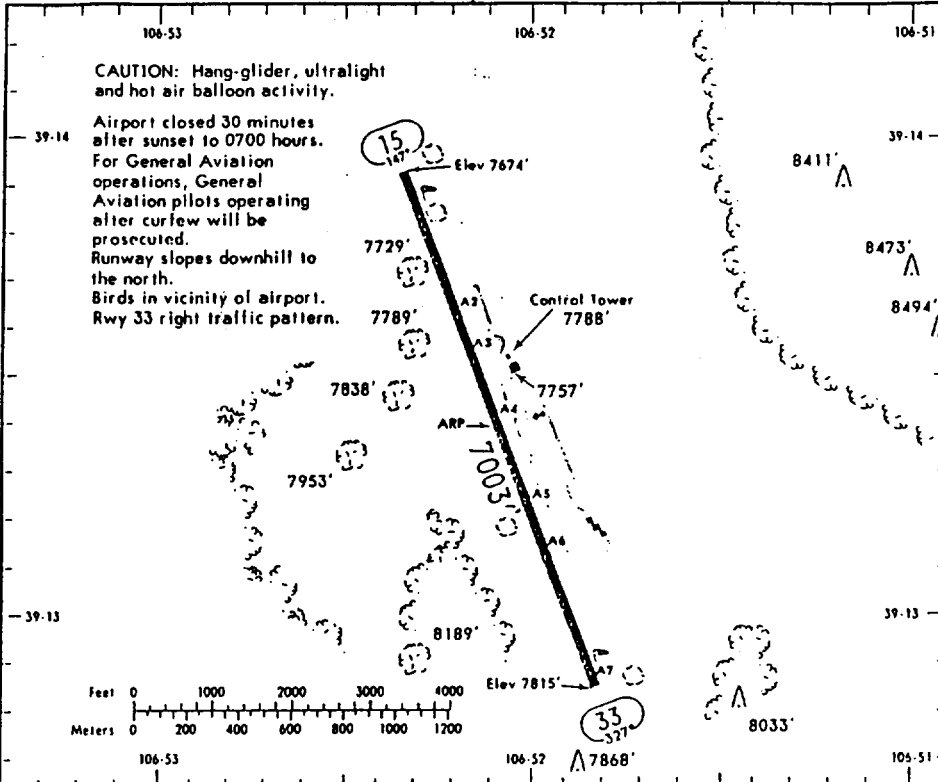
ASE (13-1) MAR 2-90

JEPPESEN

N39 13.4 W106 52.1 162.7°/13.0 From DBL 113.0
Elev 7815' Var 12°E

*ATIS 120.4
ASPEN Ground 121.9
*tower CTAF 118.4
UNICOM 122.95

*ASPEN Departure (R)
134.9
DENVER Center (R)
128.5 when Dep inop.



RWY	MIRL	LDIN	REIL	VASI-L	USABLE LENGTHS			WIDTH
					Landing Beyond Threshold	Glide Slope	TAKE-OFF	
15	MIRL	LDIN	REIL	VASI-L			NA	100'
33	MIRL							

- ① 7 strobes beginning 5.0 miles.
- ② Unusable beyond 4 NM from AER 15 due to terrain.

TAKE-OFF & IFR DEPARTURE PROCEDURE				FOR FILING AS ALTERNATE		
	Rwy 33		Other	Rwy 15		
	With Min climb gradient of 2530'/NM to 12000'	STD				
1 & 2 Eng	1/4	1	5000-5	NA	NA	
3 & 4 Eng		1/2				
A						
B						
C						
D						

IFR DEPARTURE PROCEDURE: Climbing left turn to 14000' via 270° heading to intercept and proceed northwest bound via IPKN northwest course (outbound on backcourse) and DBL VOR R-244 to Gleno Int/DBL VOR D22.7. Climb in Gleno holding pattern to MEA for assigned route, thence via assigned fix/route.

CHANGES: Rwy 33 take-off minimums, IFR departure procedure. © JEPPESEN SANDERSON, INC., 1986, 1990. ALL RIGHTS RESERVED.