

National Transportation Safety Board
Office of Research and Engineering
Washington, D.C. 20594

Radar Performance Study Errata Sheet

Specialist Report
Timothy Burtch

A. ACCIDENT

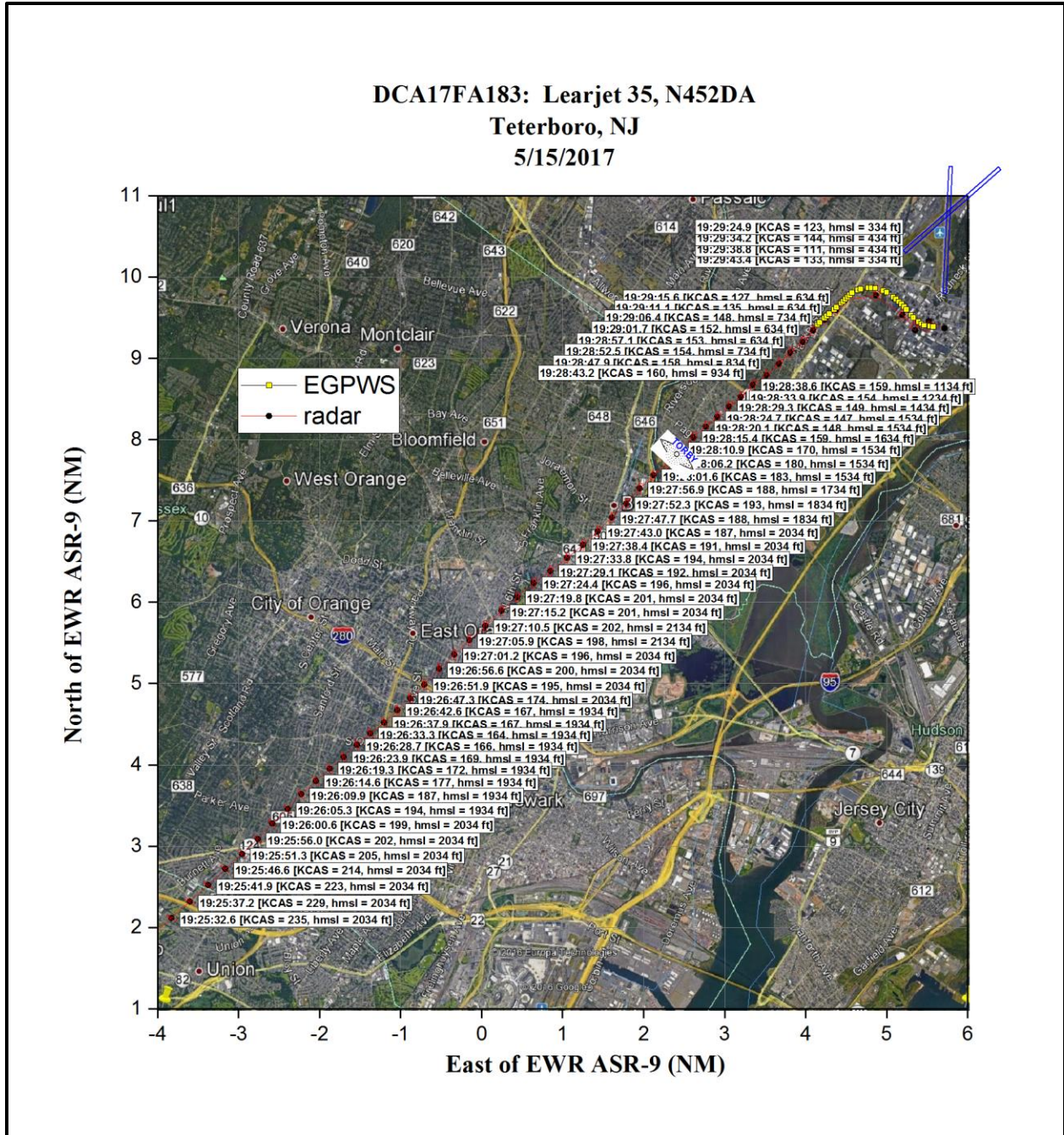
Location: Teterboro, NJ
Date: May 15, 2017
Time: 1930 GMT (3:30 pm EDT)
Airplane: Learjet LJ35, N452DA
NTSB Number: CEN17MA183

B. SUMMARY

Figures 2, 3, and 4 in the Radar Performance Study are changed to correctly reflect altitude in feet above mean sea level instead of pressure altitude.

Timothy Burtch
Specialist – Airplane Performance
National Transportation Safety Board

Radar Study, Airplane Performance
CEN17MA183, N452DA, Learjet LJ35A, 5/15/2017



Radar Study, Airplane Performance
CEN17MA183, N452DA, Learjet LJ35A, 5/15/2017

DCA17FA183: Learjet 35, N452DA
Teterboro, NJ
5/15/2017

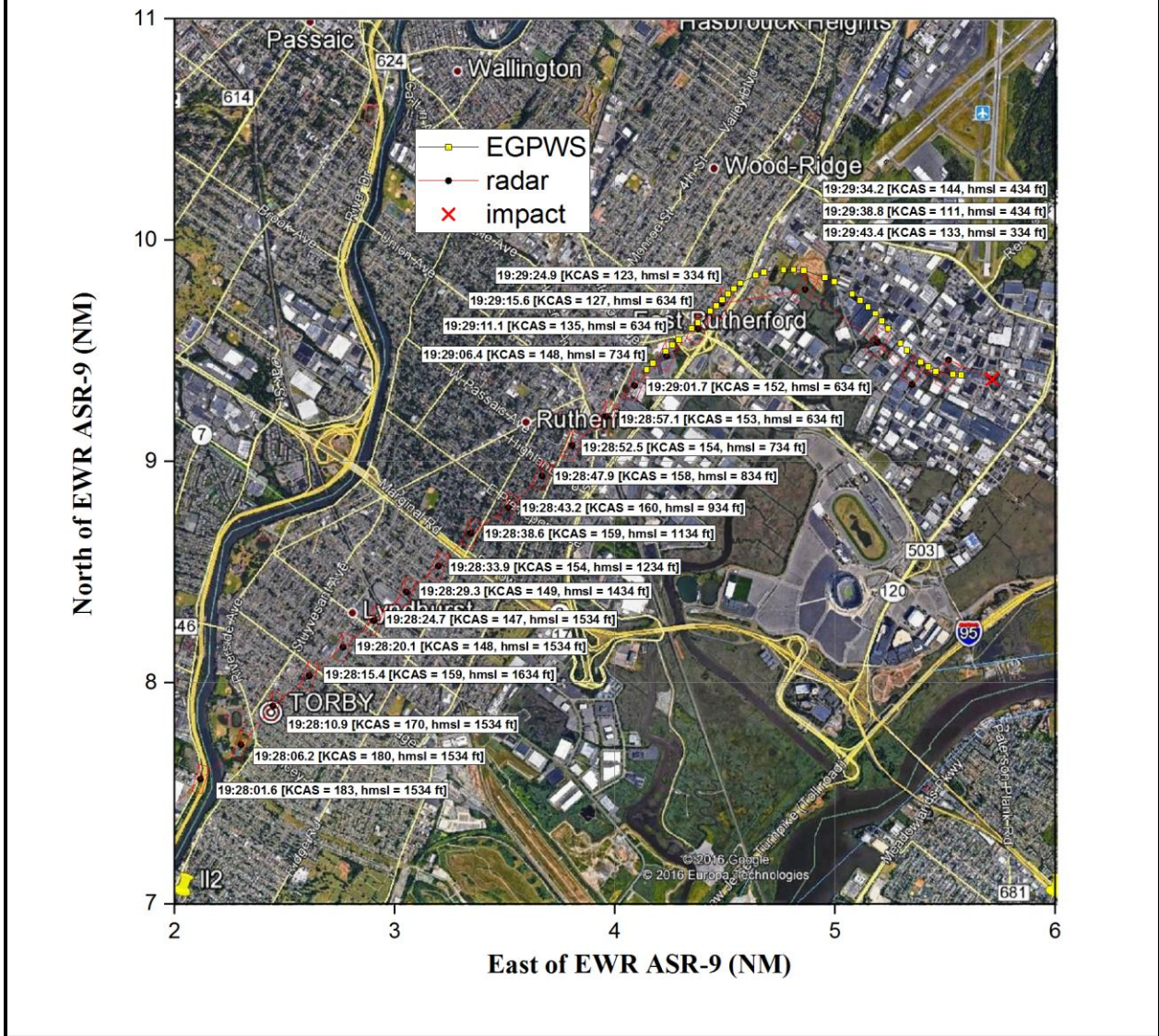


Figure 3: Ground Track During Landing Attempt

Radar Study, Airplane Performance
CEN17MA183, N452DA, Learjet LJ35A, 5/15/2017

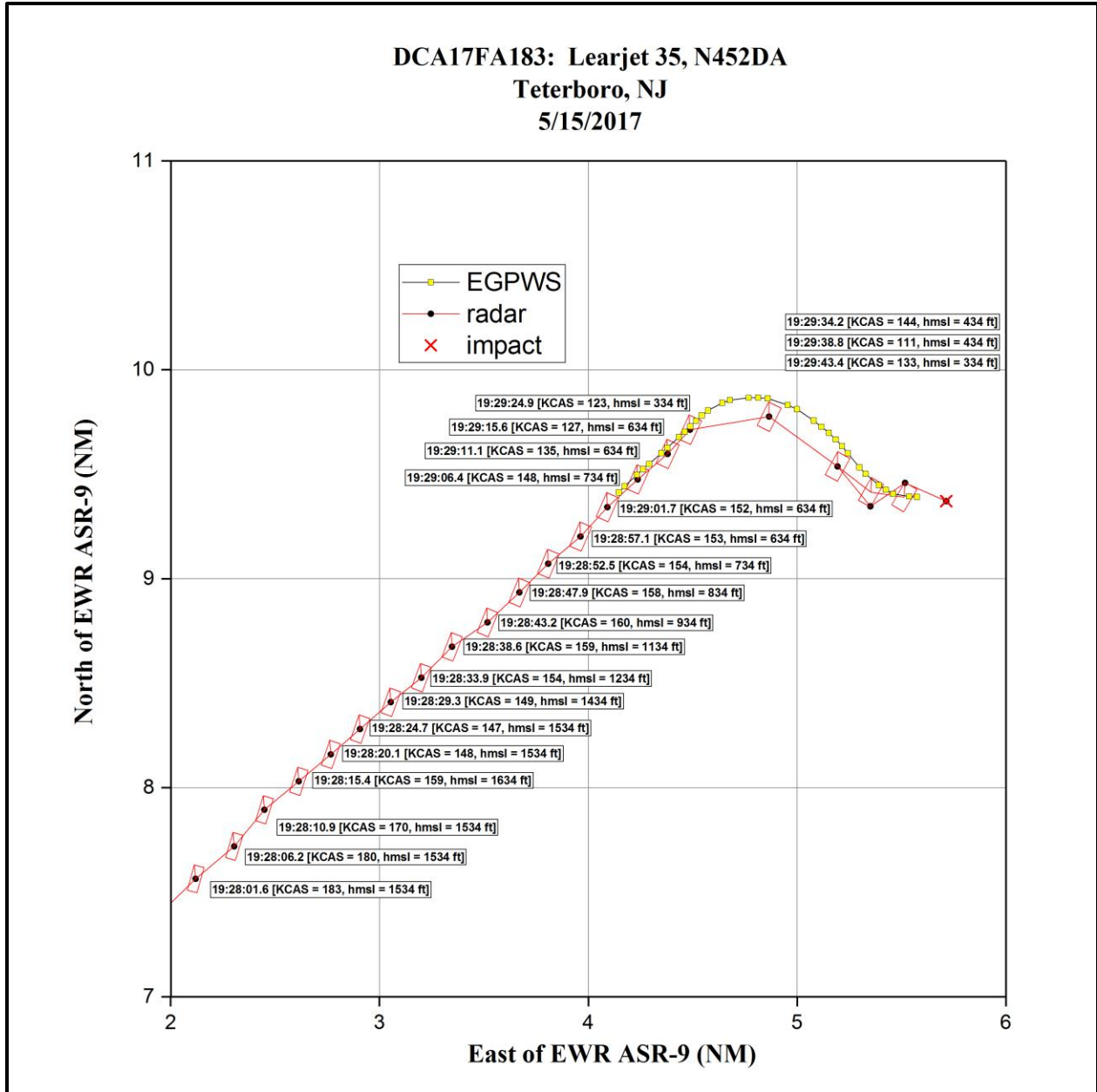


Figure 4: Ground Track During Landing Attempt