

**Attachment III**

**Jeppesen Data for the Burbank Airport and ILS Runway 8 Approach**

Notice: After 3/23/00 0901Z this chart should not be used without first checking JeppView or NOTAMs.

**JEPPesen**

9 OCT 98 (11-1)

**BURBANK, CALIF**

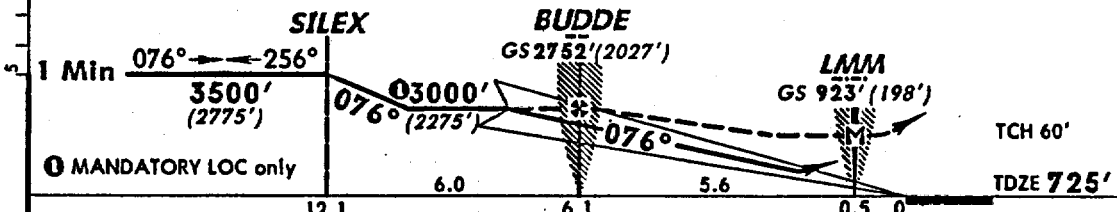
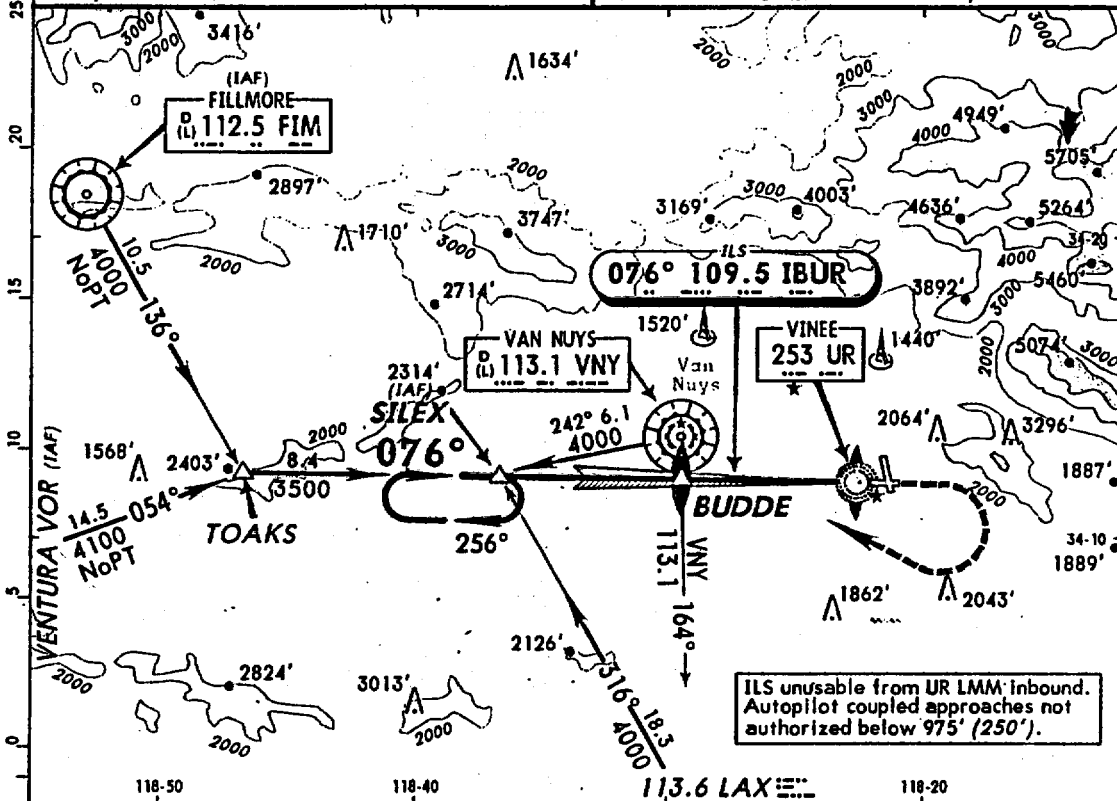
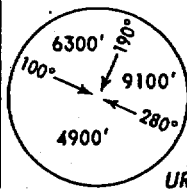
**- GLENDALE-PASADENA**

**ILS Rwy 8**

**LOC 109.5 IBUR**

**Apt. Elev 775'**

D-ATIS **134.5 (135.12)** Arrival via FIM/PMD VOR only )  
 SOCAL Approach (R) **134.2**  
 BURBANK Tower **118.7**  
 Ground **123.9**  
 Helicopter **132.32**



**MISSED APPROACH:** Climb to 1500' then climbing RIGHT turn to 4000' direct VNY VOR then outbound via VNY VOR R-242 to SILEX INT and hold. Note missed approach climb requirements: Terrain in missed approach area requires a rate of climb of at least 430' per min/100 kts; 640' per min/150 kts; 850' per min/200 kts; no wind conditions; if unable to meet rate of climb, see LOC Rwy 8 (11-2).

STRAIGHT-IN LANDING RWYS				CIRCLE-TO-LAND	
ILS		LOC (GS out)		Not Authorized Northeast of Apt Between Extended Centerlines of Rwy 15-33 & 8-26.	
DA(H) 975' (250')		MDA(H) 1140' (415')		MDA(H)	
FULL	RAIL or ALS out	RAIL out	ALS out	Max Kts	
A	RVR 50 or 1	RVR 50 or 1	RVR 60 or 1/4	90	1220' (445')-1
B				120	1300' (525')-1
C				140	1300' (525')-1 1/2
D				165	1440' (665')-2

A M E N D	Gnd speed-Kts							
	70	90	100	120	140	160		
	GS	3.00°	378	486	540	648	756	864
	MAP at LMM or BUDD to MAP 5.6	4:48	3:44	3:22	2:48	2:24	2:06	

CHANGES: Communications.

**KBUR**

Apt Elev **775'**  
086.6°/6.8 From VNY 113.1

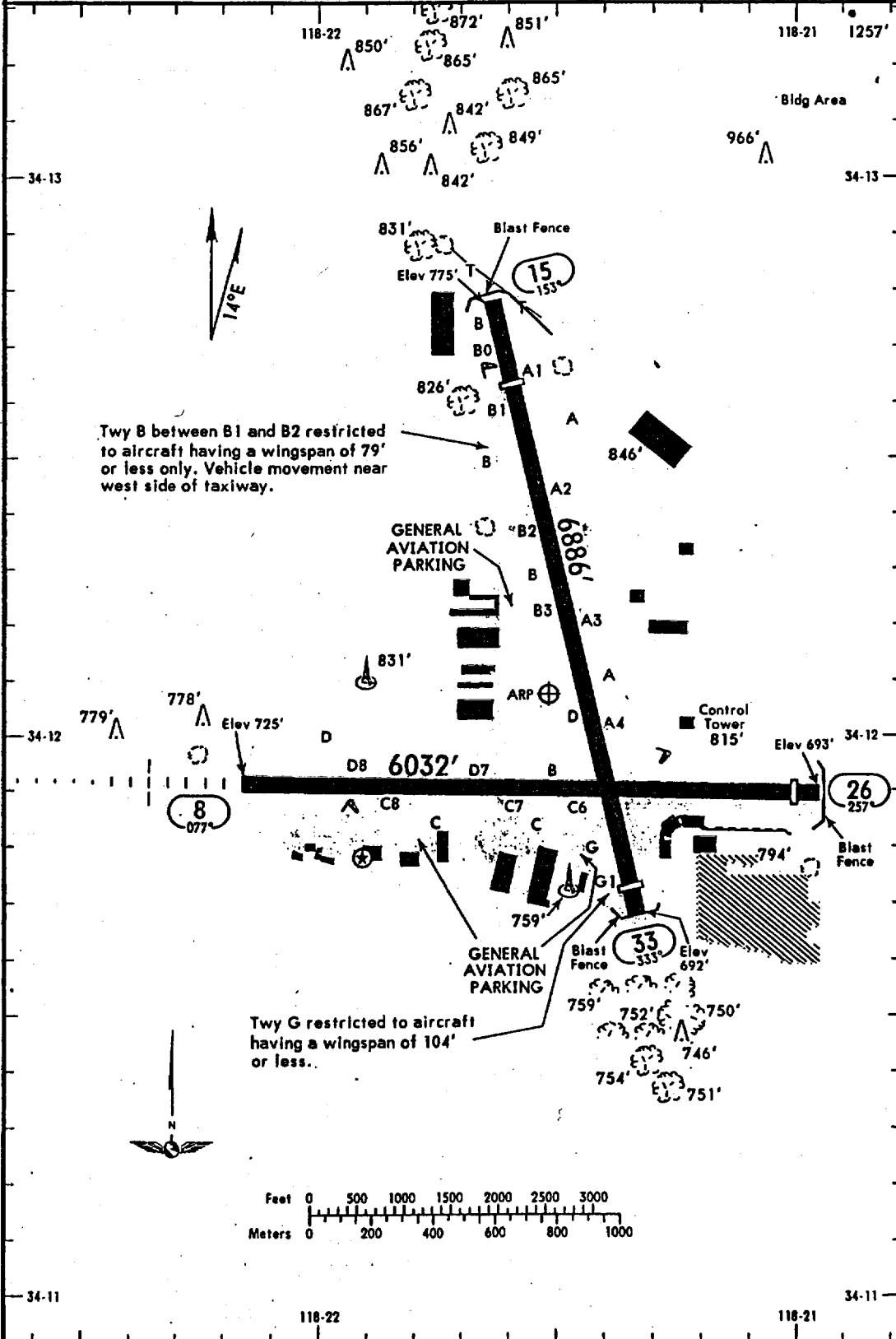
**JEPPESEN**

16 OCT 98 **(10-9)**

**BURBANK, CALIF**  
**-GLENDALE-PASADENA**  
N34 12.0 W118 21.5

D-ATIS <b>134.5</b>	ACARS: D-ATIS PDC	BURBANK Clearance (Cpt) <b>118.0</b>	Ground <b>123.9</b>	Tower <b>118.7</b>	Helicopter <b>132.32</b>
------------------------	-------------------------	---	------------------------	-----------------------	-----------------------------

SOCAL Departure (R)			
VNY R-280-Apt 050° <b>120.4</b>	Apt 050°-Apt 150° <b>135.05</b>	Apt 150°-VNY R-160 <b>124.6</b>	VNY R-160-VNY R-280 <b>134.2</b>



Twy B between B1 and B2 restricted to aircraft having a wingspan of 79' or less only. Vehicle movement near west side of taxiway.

Twy G restricted to aircraft having a wingspan of 104' or less.

CHANGES: Helicopter frequency added.