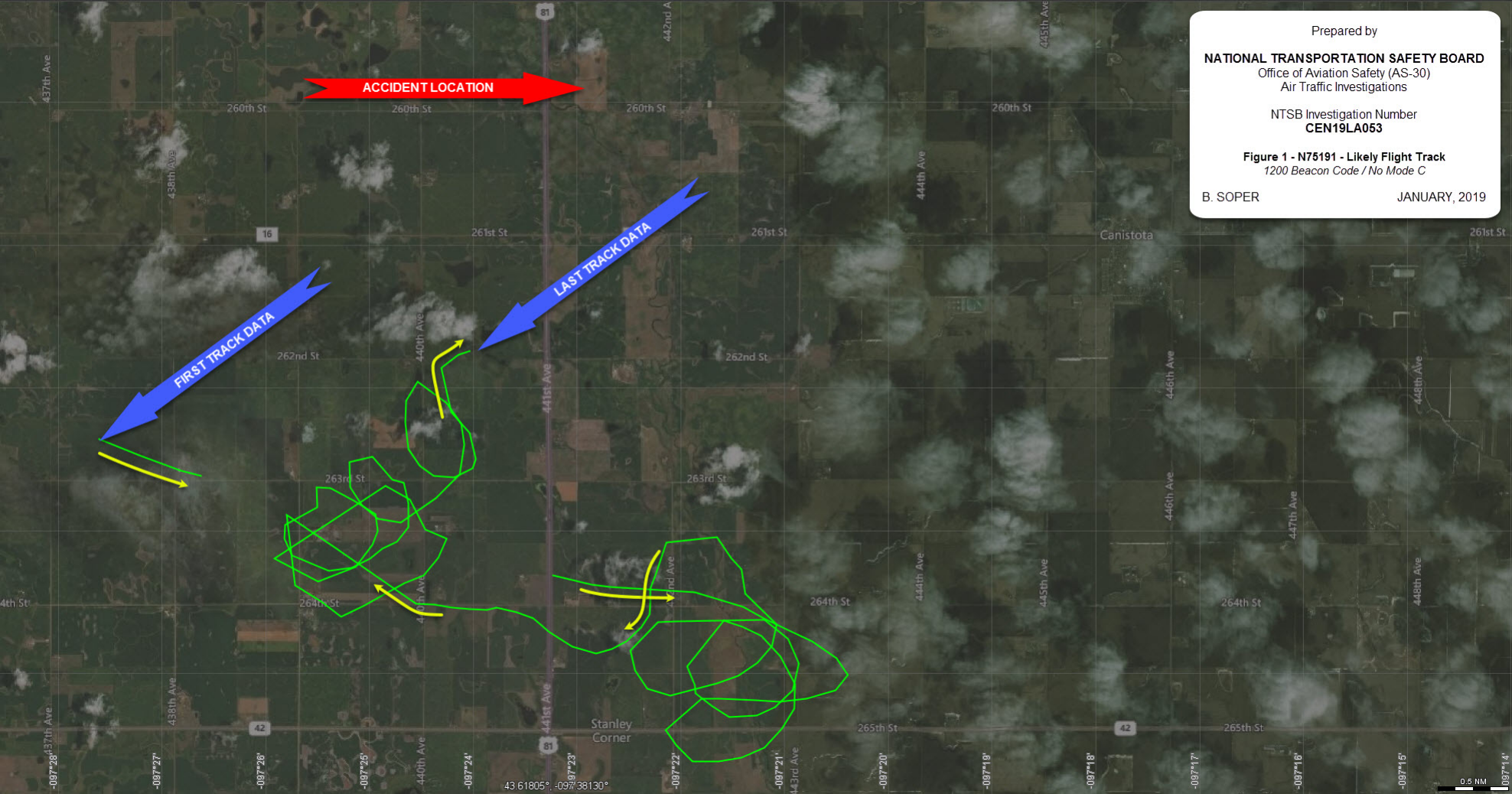


Prepared by
NATIONAL TRANSPORTATION SAFETY BOARD
Office of Aviation Safety (AS-30)
Air Traffic Investigations

NTSB Investigation Number
CEN19LA053

Figure 1 - N75191 - Likely Flight Track
1200 Beacon Code / No Mode C

B. SOPER
JANUARY, 2019



Communication Summary

January 30, 2019

Information from: Mr. Brian Soper, NTSB ATC Specialist



Summary & Factual Information: Mr. Soper gathered OpsVue data on a radar target near the Salem, SD, area. He, in part, reported that there was no Mode C recorded and therefore no altitude information was available.

The first found track data starts at 1409:35 CST and showed the airplane was traveling SE bound, then track data stopped for a little over a minute and picks back up at 1411:28 CST still traveling in a SE bound direction. Track data then indicates he entered an area of maneuvering/circling for about 6 minutes until breaking away to a NW bound heading briefly before again entering into an area of maneuvering/circling; all left hand turns until the end when track data indicates a turn to the right and track data terminated at 1435:51 CST, and was about 2 nm southwest of the advised accident site.

First Track Data: 1409:35 CST // 43.5774002N/-97.4601669W // No Alt // 105 kts

Last Track Data: 1425:51 CST // 43.5876998N/-97.4006423W // No Alt // 102 kts

I can attest that the above summary is correct to the best of my knowledge:

Edward F. Malinowski
National Transportation Safety Board
Air Safety Investigator