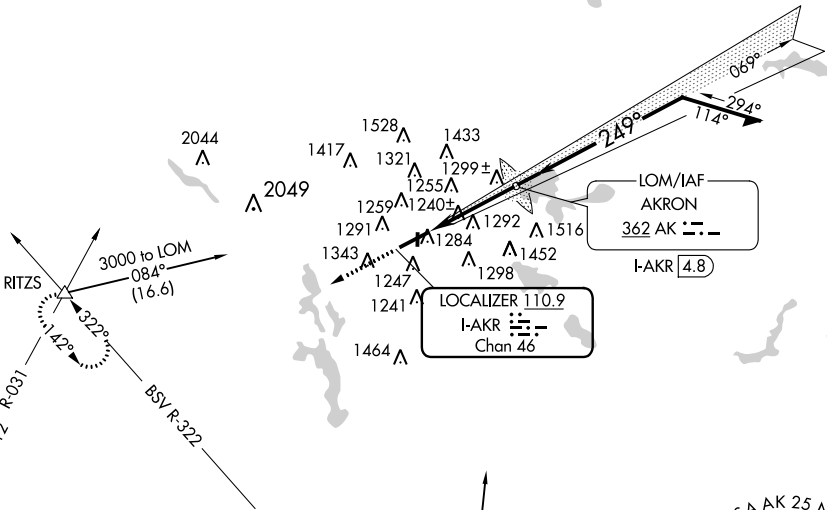


LOC/DME I- AKR	APP CRS	Rwy Idg	6077
110.9	249°	TDZE	1048
Chan 46		Apt Elev	1068

LOC RWY 25
AKRON FULTON INTL (AKR)

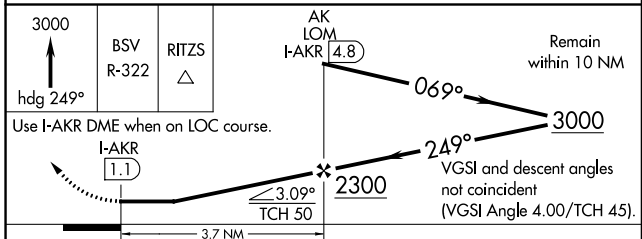
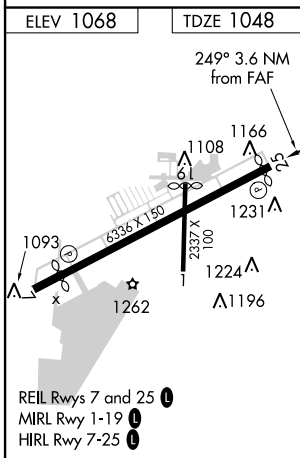
<p>▽ ▲ NA</p>		<p>MISSED APPROACH: Climb to 3000 via heading 249° and BSV R-322 to RITZS Int and hold.</p>	
ASOS	AKRON-CANTON APP CON *	CLNC DEL	UNICOM
126.825	118.6 371.875	121.6	123.075 (CTAF) 📞

ADF or RADAR REQUIRED



EC-2, 31 MAR 2016 to 28 APR 2016

EC-2, 31 MAR 2016 to 28 APR 2016



CATEGORY	A	B	C	D
S-25	1540-1	492 (500-1)	1540-1¼ 492 (500-1¼)	1540-1½ 492 (500-1½)
CIRCLING	1640-1	1700-1	1700-1¾ 632 (700-1¾)	1700-2 632 (700-2)