



Photo 1 – Aerial view of airplane in roof of condominium-bottom right. Note airport in background.(Courtesy of Massachusetts State Police)

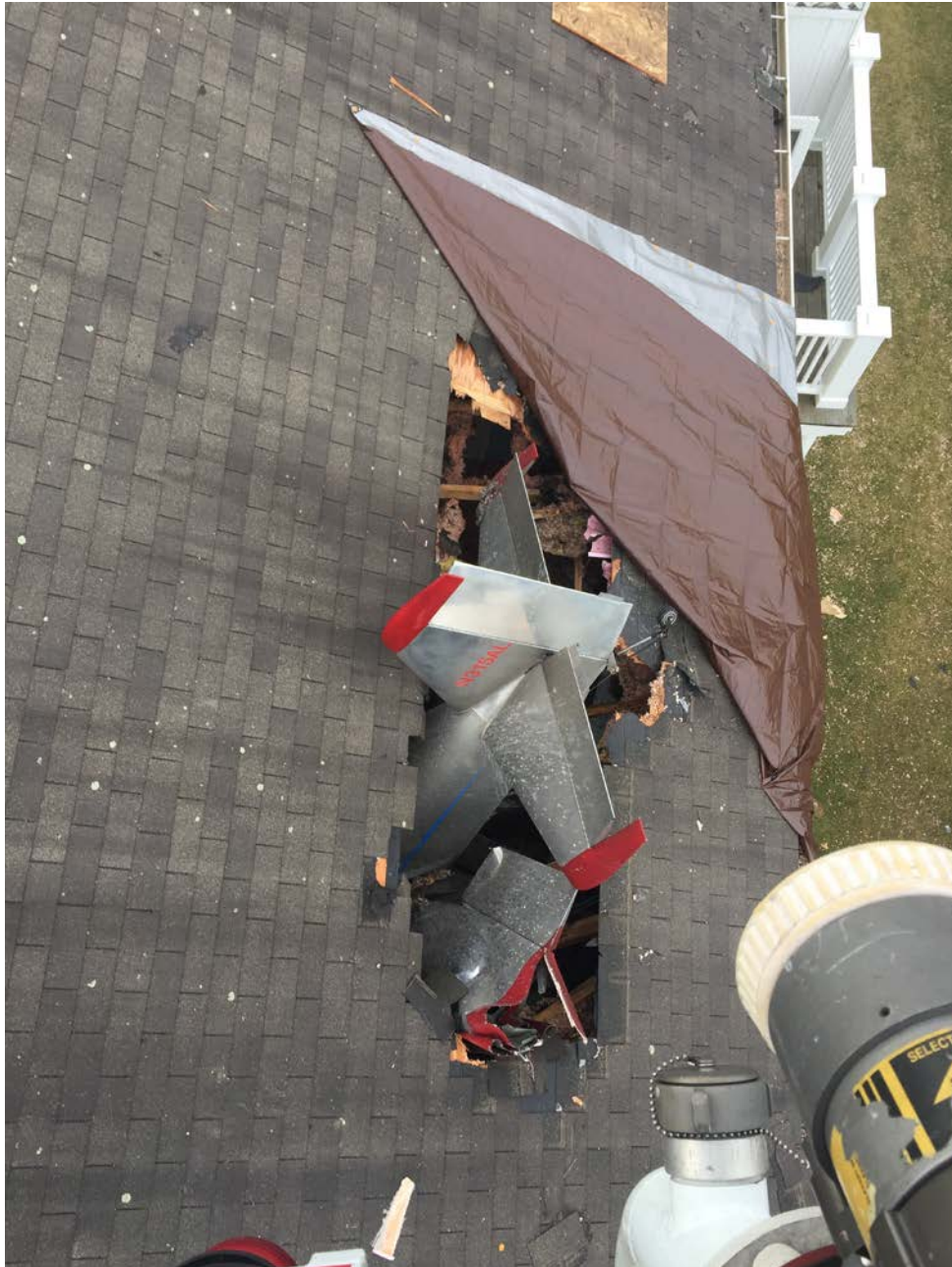


Photo 2 – Close up view of airplane in roof of condominium. (Courtesy of Methuen Fire Department)



Photo 3 – View of damaged instrument panel and engine inside condominium room.



Photo 4 – View of airplane recovery from roof of condominium.



Photo 5 – Right underside of fuselage showing damaged antennae.



Photo 6 – Aft quarter view of airplane looking forward- showing wings and fuselage damage.



Photo 7 – Forward view of right wing and fuselage damage.



Photo 8 – Left side of engine showing damage.