



Photo 1 –View of main wreckage



Photo 2 –View of wreckage right side



Photo 3 –View of propeller



Photo 4 – View of left wing tip



Photo 5 – View of ground scars



Photo 6 – View of fire damaged right wing

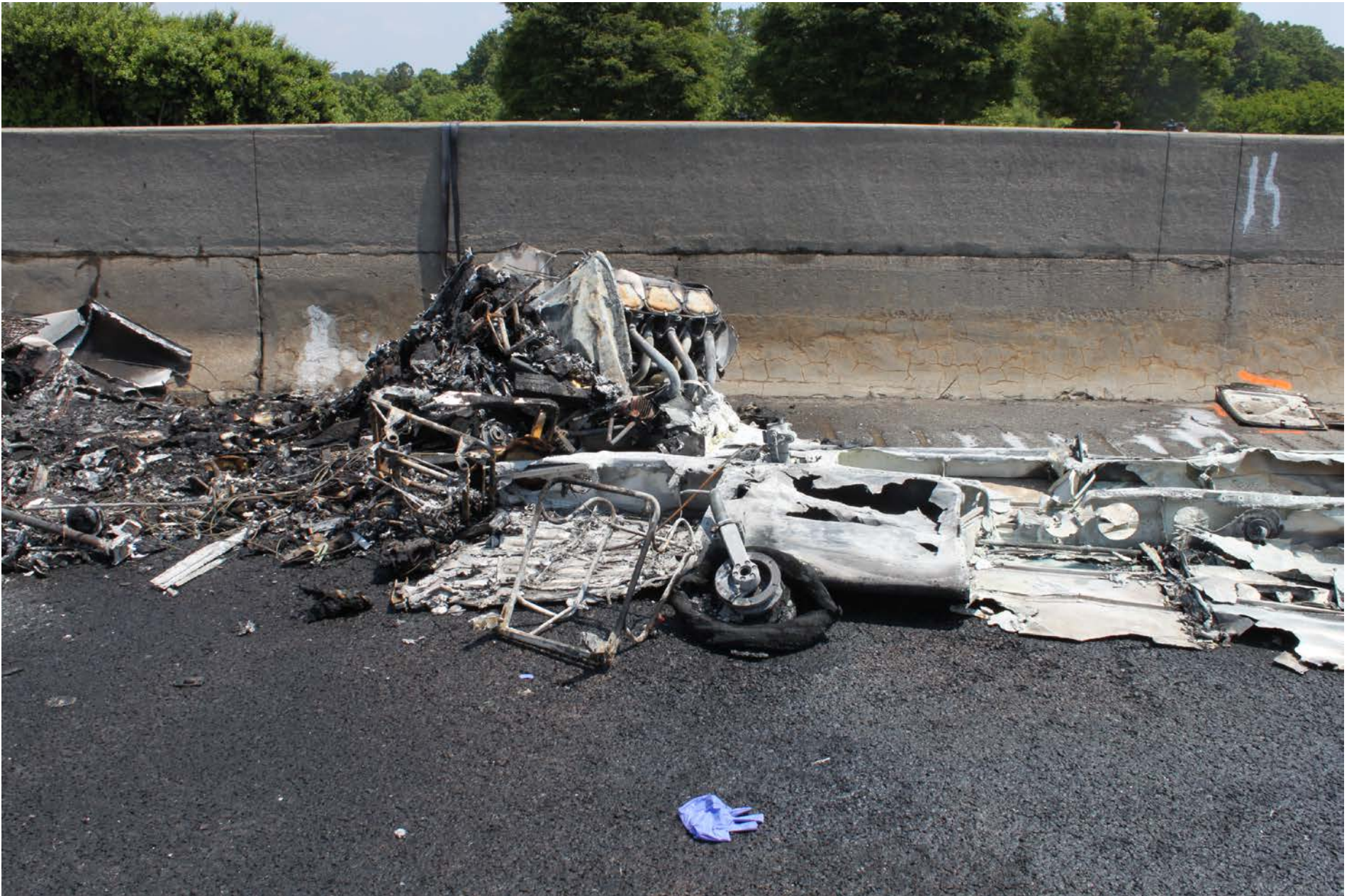


Photo 7 –View of cockpit section



Photo 8 – Front view of engine with broken propeller flange



Photo 9 – View of top of engine with fuel manifold



Photo 10 – View of vertical and left horizontal stabilizer fire damaged



Photo 11 –View of fire damaged instrument panel

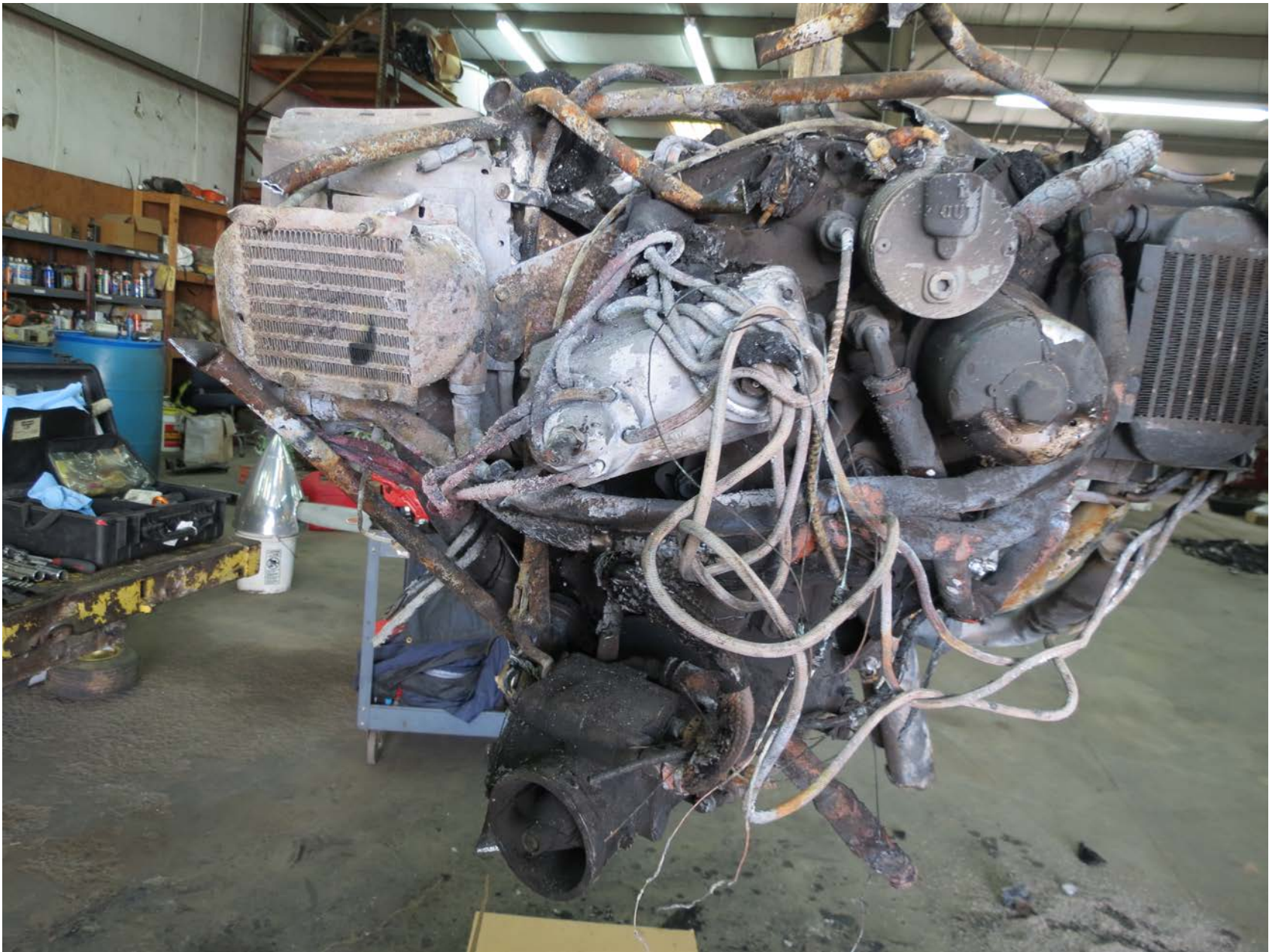


Photo 12 –View of fire damaged engine accessories and fuel servo