

7/2015

Prepared by

**NATIONAL TRANSPORTATION SAFETY BOARD**

Office of Aviation Safety (AS-30)

Air Traffic Investigations

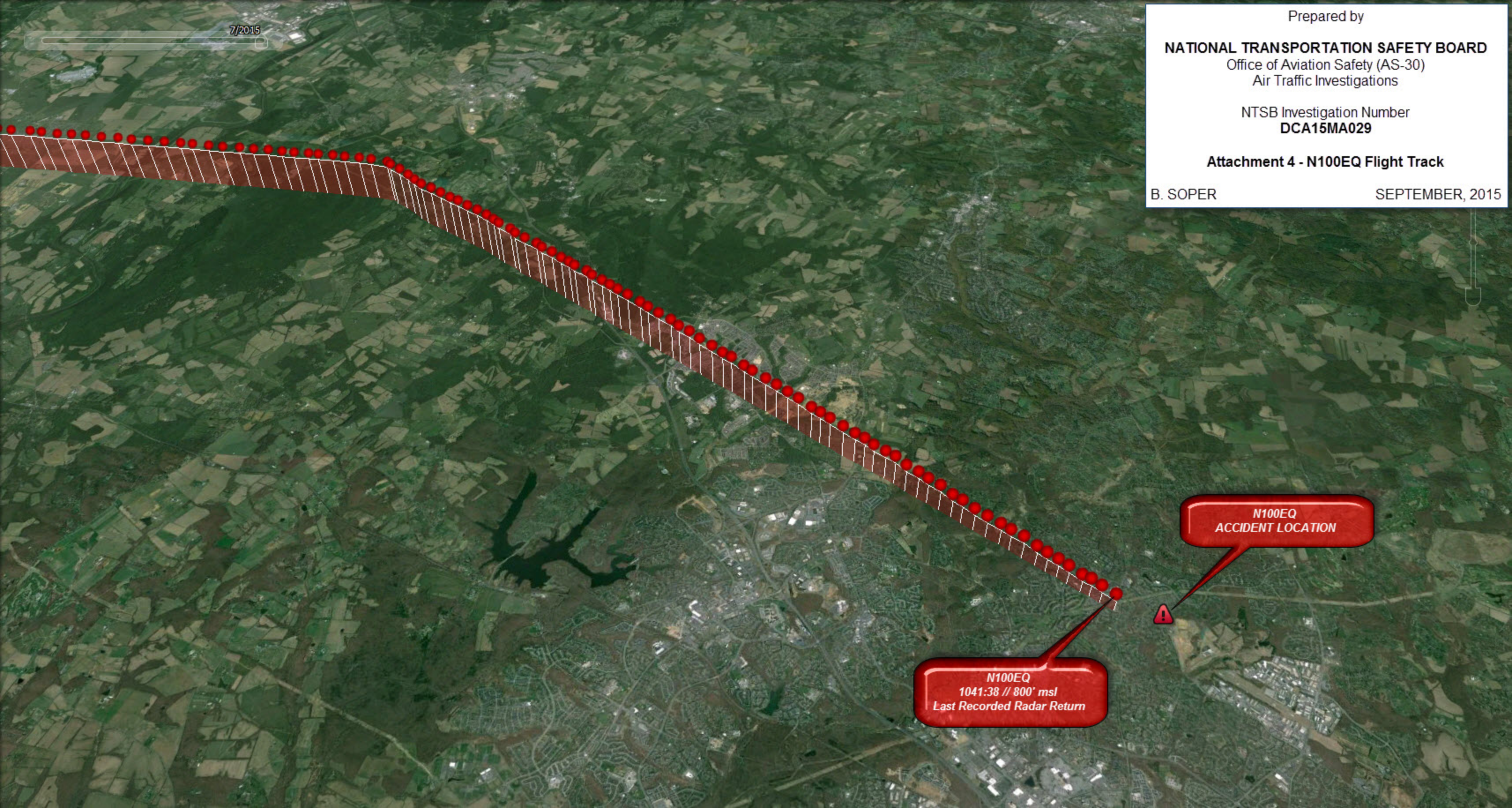
NTSB Investigation Number

**DCA15MA029**

**Attachment 4 - N100EQ Flight Track**

B. SOPER

SEPTEMBER, 2015



**N100EQ**  
1041:38 // 800' msl  
Last Recorded Radar Return

**N100EQ**  
ACCIDENT LOCATION