

Prepared by

NATIONAL TRANSPORTATION SAFETY BOARD

Office of Aviation Safety (AS-30)

Air Traffic Investigations

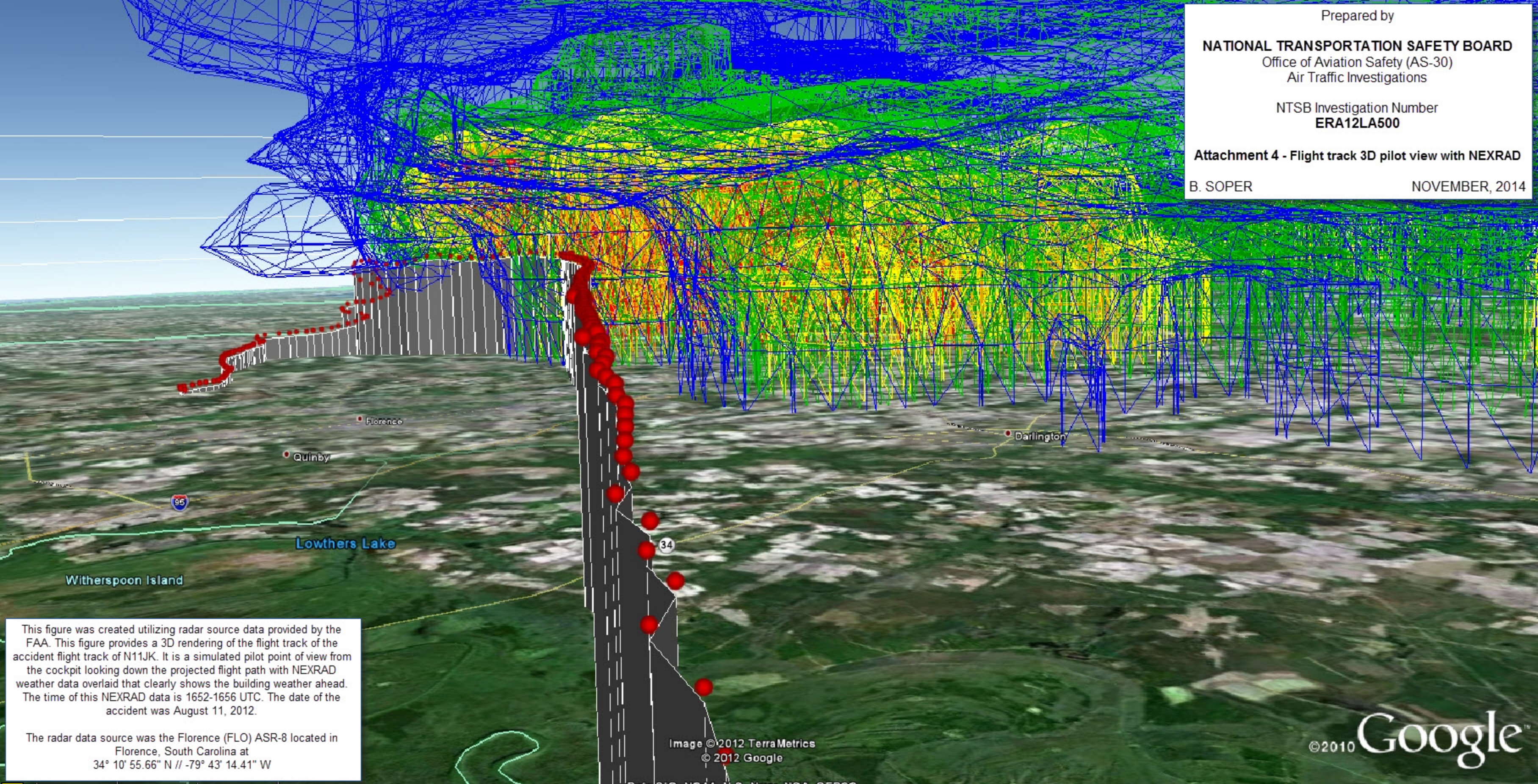
NTSB Investigation Number

ERA12LA500

Attachment 4 - Flight track 3D pilot view with NEXRAD

B. SOPER

NOVEMBER, 2014



This figure was created utilizing radar source data provided by the FAA. This figure provides a 3D rendering of the flight track of the accident flight track of N11JK. It is a simulated pilot point of view from the cockpit looking down the projected flight path with NEXRAD weather data overlaid that clearly shows the building weather ahead. The time of this NEXRAD data is 1652-1656 UTC. The date of the accident was August 11, 2012.

The radar data source was the Florence (FLO) ASR-8 located in Florence, South Carolina at 34° 10' 55.66" N // -79° 43' 14.41" W

Image © 2012 TerraMetrics
© 2012 Google

©2010 Google™