

Prepared by

NATIONAL TRANSPORTATION SAFETY BOARD

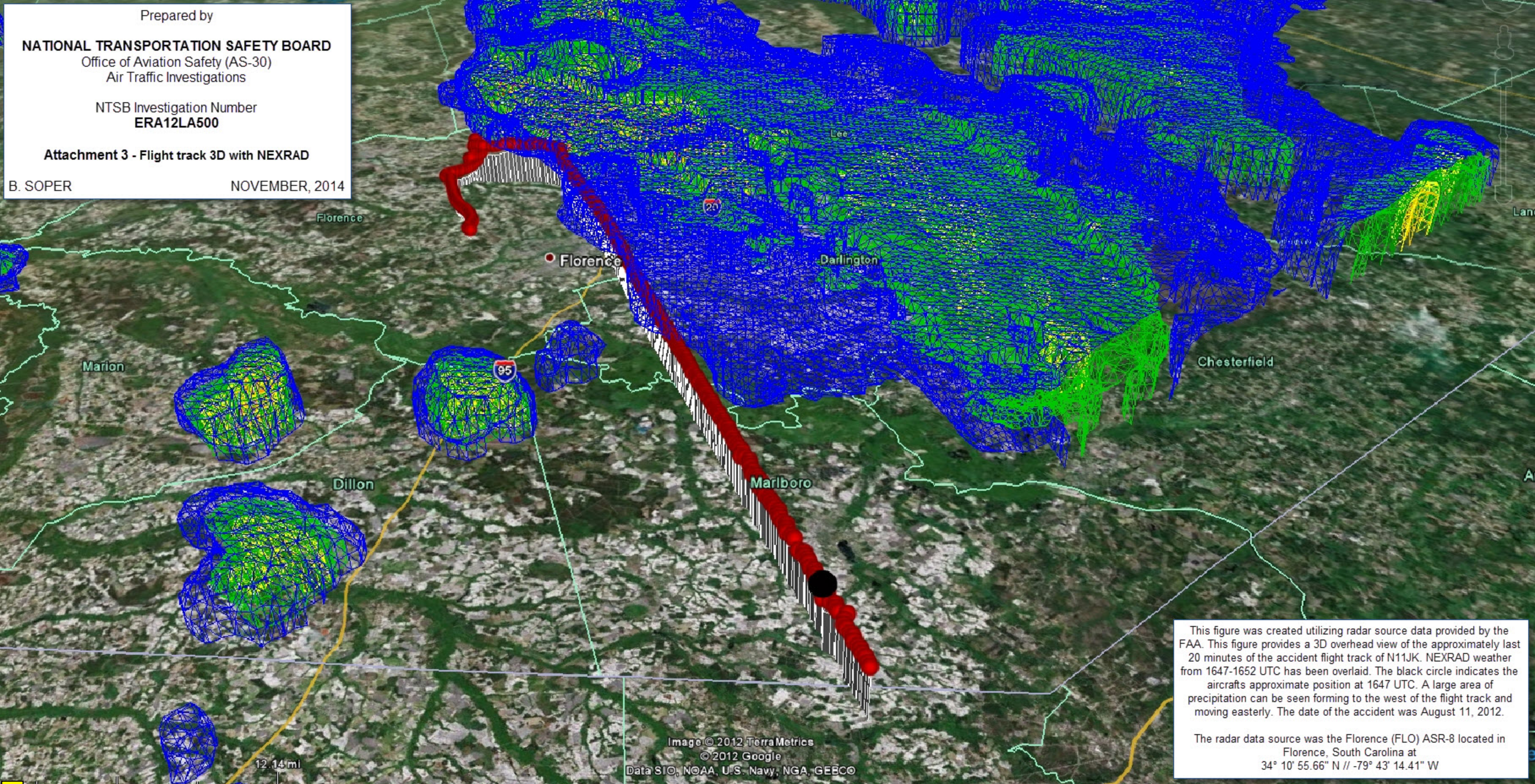
Office of Aviation Safety (AS-30)
Air Traffic Investigations

NTSB Investigation Number
ERA12LA500

Attachment 3 - Flight track 3D with NEXRAD

B. SOPER

NOVEMBER, 2014



This figure was created utilizing radar source data provided by the FAA. This figure provides a 3D overhead view of the approximately last 20 minutes of the accident flight track of N11JK. NEXRAD weather from 1647-1652 UTC has been overlaid. The black circle indicates the aircraft's approximate position at 1647 UTC. A large area of precipitation can be seen forming to the west of the flight track and moving easterly. The date of the accident was August 11, 2012.

The radar data source was the Florence (FLO) ASR-8 located in Florence, South Carolina at 34° 10' 55.66" N // -79° 43' 14.41" W