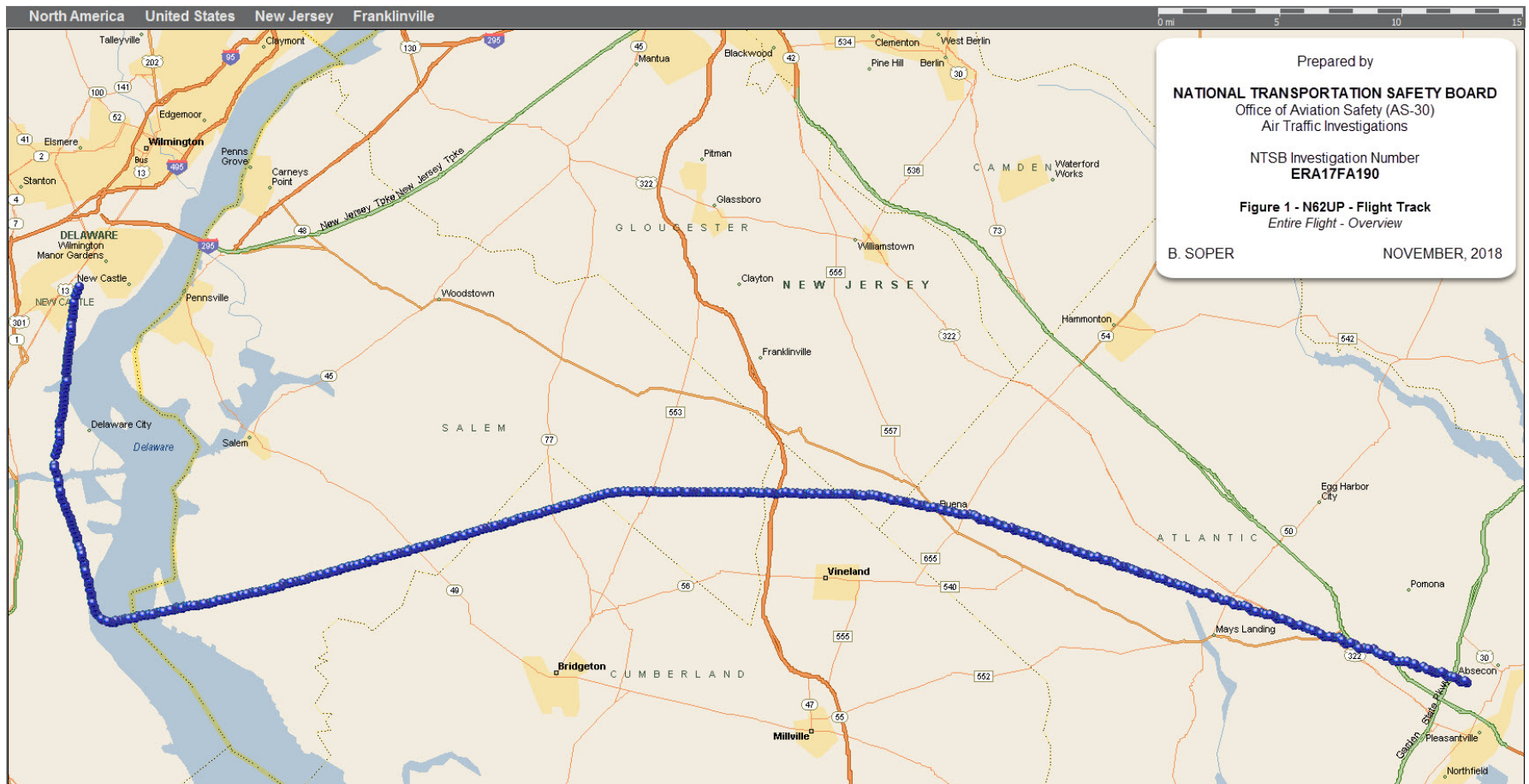


**Factual Report – Attachment 2**

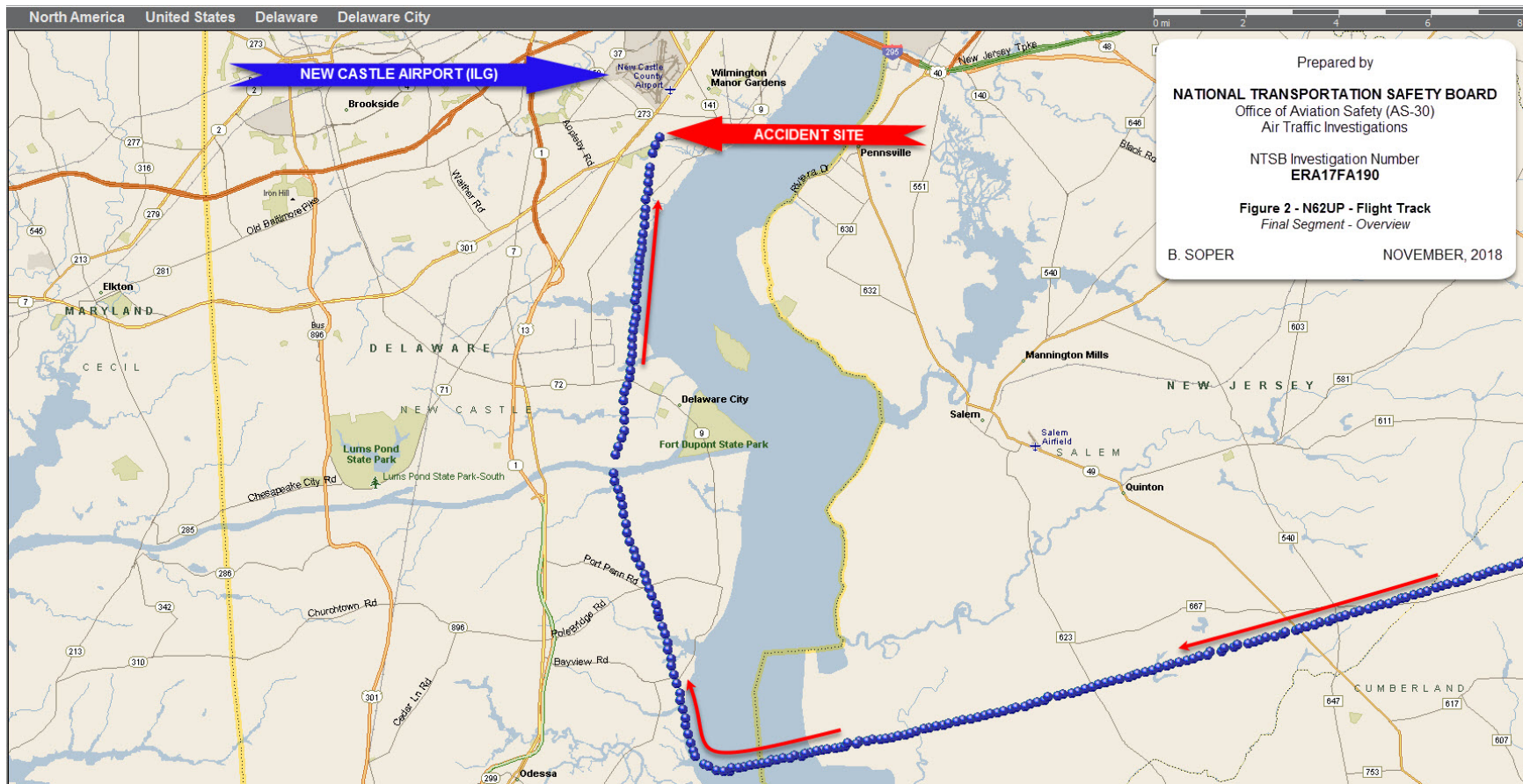
**Radar Figures**

**AIR TRAFFIC CONTROL**

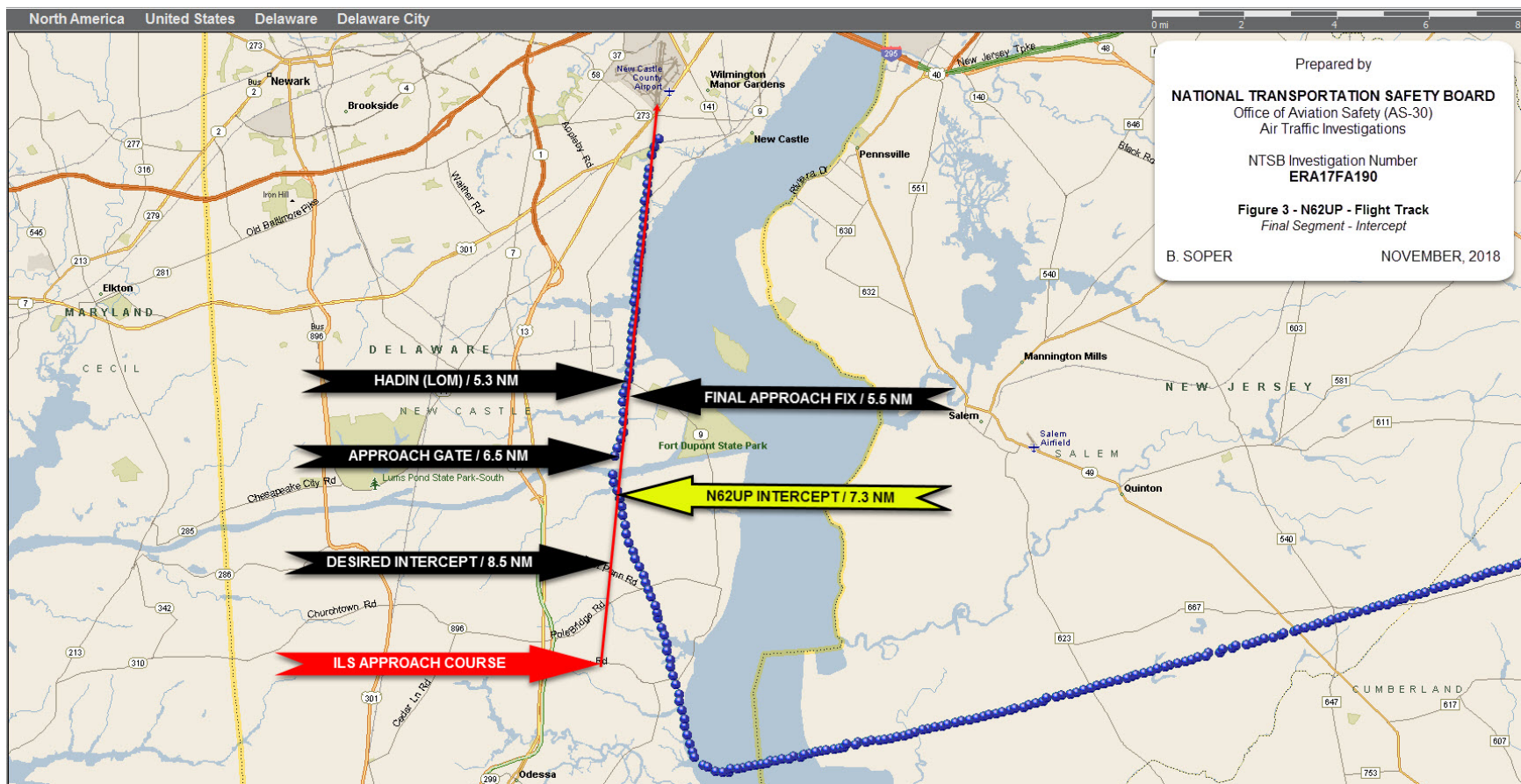
ERA17FA190



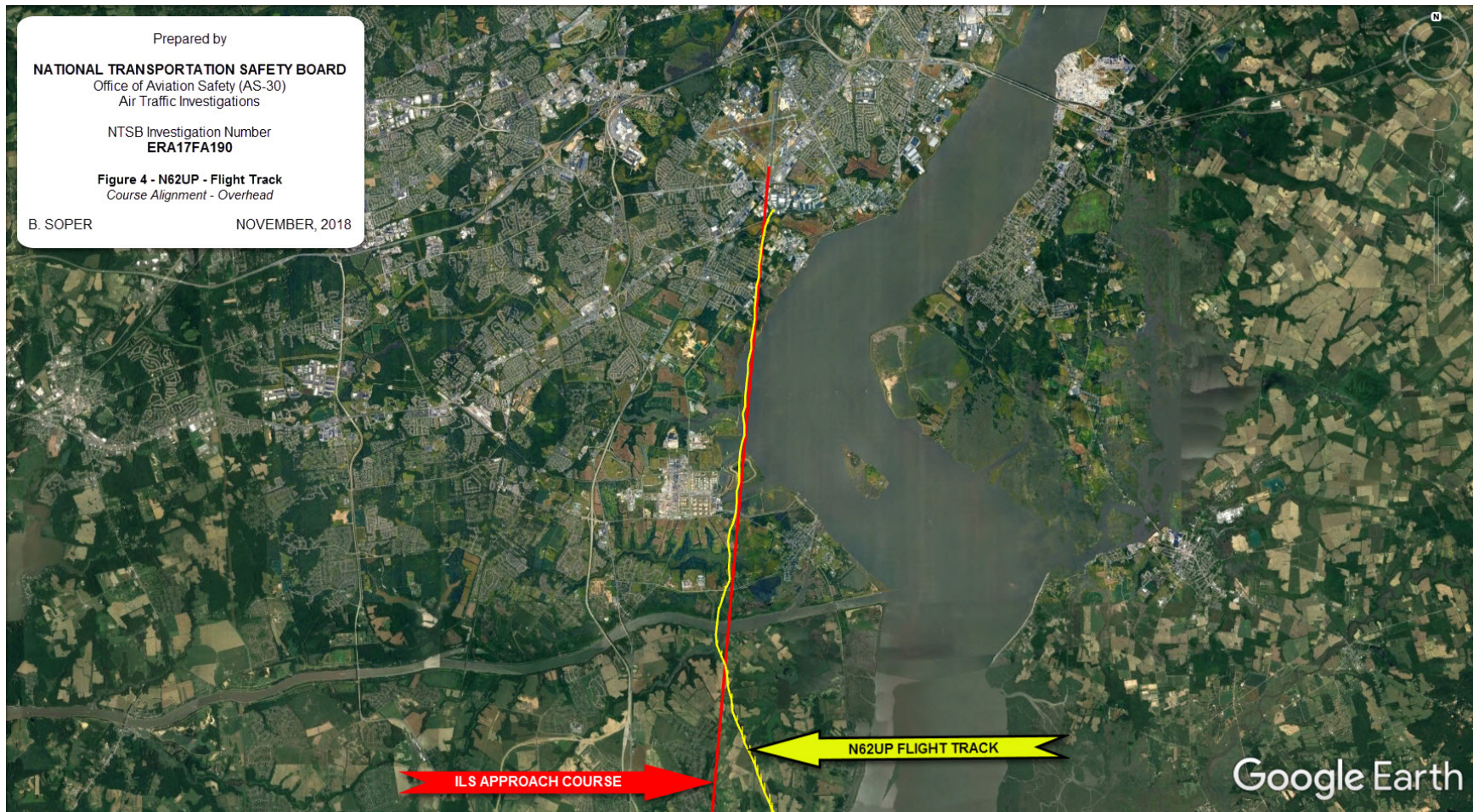
**Figure 1 - Radar flight track of the accident flight of N62UP. This is an overview of the entire accident flight track.**



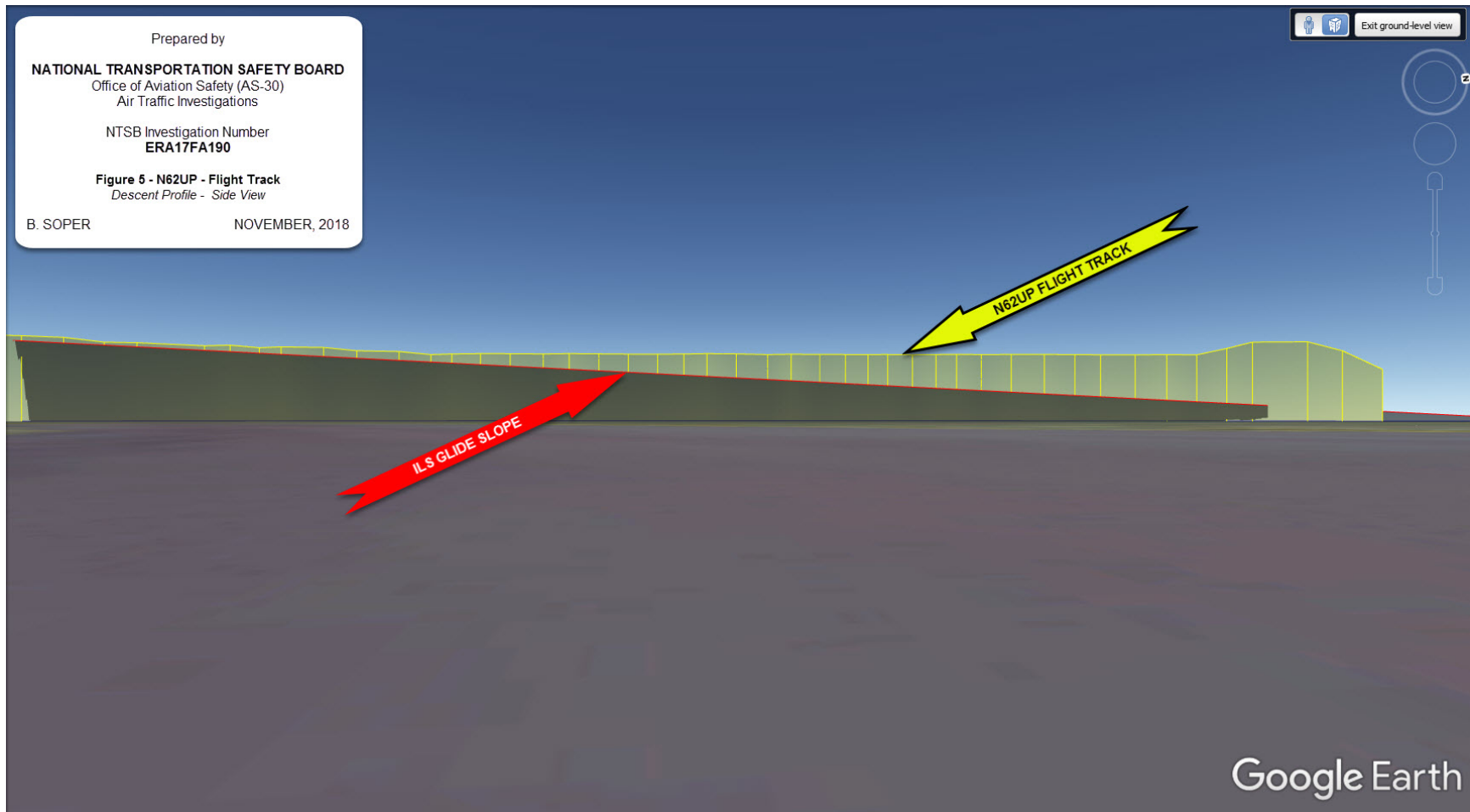
**Figure 2 - Radar flight track of the final segment of the accident flight of N62UP. The accident site location and intended destination are illustrated for situation awareness.**



**Figure 3 - Radar flight track of the final segment of the accident flight of N62UP. Key points along the route of flight have been depicted in order to illustrate N62UP's final approach intercept with relation to the final approach fix (FAF) and approach gate.**



**Figure 4** - Radar flight track of the final segment of the accident flight of N62UP. The final approach course for the ILS runway 1 approach at ILG is also depicted to illustrate N62UP's course alignment while on final approach.



**Figure 5** - Radar flight track of the final segment of the accident flight of N62UP. This is a side view of the final segment, with the ILS glideslope depicted in order to illustrate the descent profile of N62UP while on final approach.



**Figure 6** - Radar flight track of the final segment of the accident flight of N62UP. This figure is an overhead view of the flight track looking from southeast to northwest with the ILS approach course also depicted to illustrate an overview of the approach.