

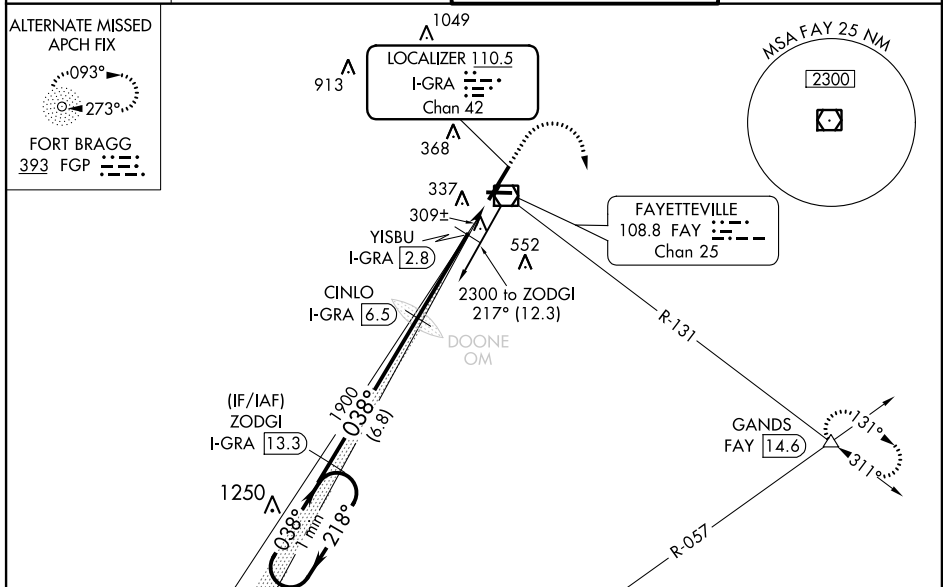
LOC/DME I-GR A	APP CRS	Rwy Idg	6508
110.5	038°	THRE	185
Chan 42		Apt Elev	189

ILS or LOC/DME RWY 4

FAYETTEVILLE RGNL/GRANNIS FIELD (FAY)

<p>▼ Inoperative table does not apply to S-ILS 4. Visibility reduction by helicopters NA. For inoperative MALSR, increase S-LOC 4 all Cats visibility to RVR 5500.</p>	MALSR	MISSED APPROACH: Climb to 1100 then climbing right turn to 3000 on FAY VOR/DME R-131 to GANDS INT/FAY 14.6 DME and hold.

ATIS 121.25	FAYETTEVILLE APP CON 133.0 295.0	FAYETTEVILLE TOWER 118.3 269.2	GND CON 121.7 348.6
-----------------------	--	--	-------------------------------



One Minute Holding Pattern

VGSI and ILS glidepath not coincident (VGSI Angle 3.00/TCH 60).

ZODGI I-GR A 13.3 CINLO I-GR A 6.5 YISBU I-GR A 2.8

GS 3.00° TCH 51

1100 3000 GANDS

*LOC only

2300 ← 218° 038° → 1900

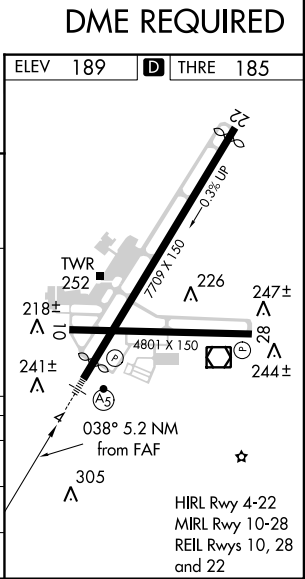
1900 038° 1900

*I-GR A 2.2 I-GR A 1.2

*740

6.8 NM 3.6 NM 0.6 1 NM

CATEGORY	A	B	C	D
S-ILS 4		385/40	200 (200-¾)	
S-LOC 4		560/40	375 (400-¾)	
CIRCLING	640-1	451 (500-1)	640-1½ 451 (500-1½)	740-2 551 (600-2)



SE-2, 13 DEC 2012 to 10 JAN 2013

SE-2, 13 DEC 2012 to 10 JAN 2013