

96116

P6

EC-1, 5 DEC 1966

MIZAR TWO ARRIVAL (MIZAR.MIZAR2)

DETROIT METROPOLITAN WAYNE COUNTY ST-119 (FAA) DETROIT, MICHIGAN

DETROIT APP COM
134.97 348.3
AWG 138.675

JACKSON
109.4 JXN INT
Chen 33

LITCHFIELD
111.2 LFD INT
Chen 47
N42°03.73'
W84°45.91'
L-23

NAKES
N41°40.17'
W84°26.52'

FORT WAYNE
117.8 FWA INT
Chen 125
N48°58.75'
W85°11.28'
L-23, H-3

RAZIM
N41°08.15'
W83°47.55'
**VERTICAL NAVIGATION
PLANNING INFORMATION**
TURBOJETS/TURBOPROPS:
When landing Runway 3,
expect to cross at or
below 10,000 feet.

DETROIT
113.4 DWO INT
Chen 81

RANDI
N41°45.78'
W84°12.32'

MIZAR
N41°09.55'
W84°02.59'

CARLETON
118.7 CRL INT
Chen 104

**VERTICAL NAVIGATION
PLANNING INFORMATION**
TURBOJETS: Expect to cross at 12,000 feet
and when landing Runway 3,
250 KT.
TURBOPROPS: Expect to cross at 11,000 feet.

ROTER
N41°10.94'
W84°25.71'

TORR
N40°44.50'
W84°24.98'

DAYTON
114.5 DQN INT
Chen 92
N40°00.98' W84°23.81'
L-23, H-3-4

NOTE: DME required.
NOTE: Chart not to scale.

DAYTON TRANSITION (DQN.MIZAR2): From over DQN VOR/DME via DQN R-360 and JXN R-184 to NAKES INT, then via CRL VORTAC R-246 to MIZAR INT. Thence
FORT WAYNE TRANSITION (FWA.MIZAR2): From over FWA VORTAC via FWA R-039 to NAKES INT, then via CRL R-246 to MIZAR INT. Thence
LITCHFIELD TRANSITION (LFD.MIZAR2): From over LFD VORTAC via LFD R-127 to RANDI INT, then via CRL R-246 to MIZAR INT. Thence
. . . . From over MIZAR INT via DXO VOR/DME R-239 to RAZIM DME. Expect radar vectors to final approach course.

MIZAR TWO ARRIVAL (MIZAR.MIZAR2)

DETROIT, MICHIGAN

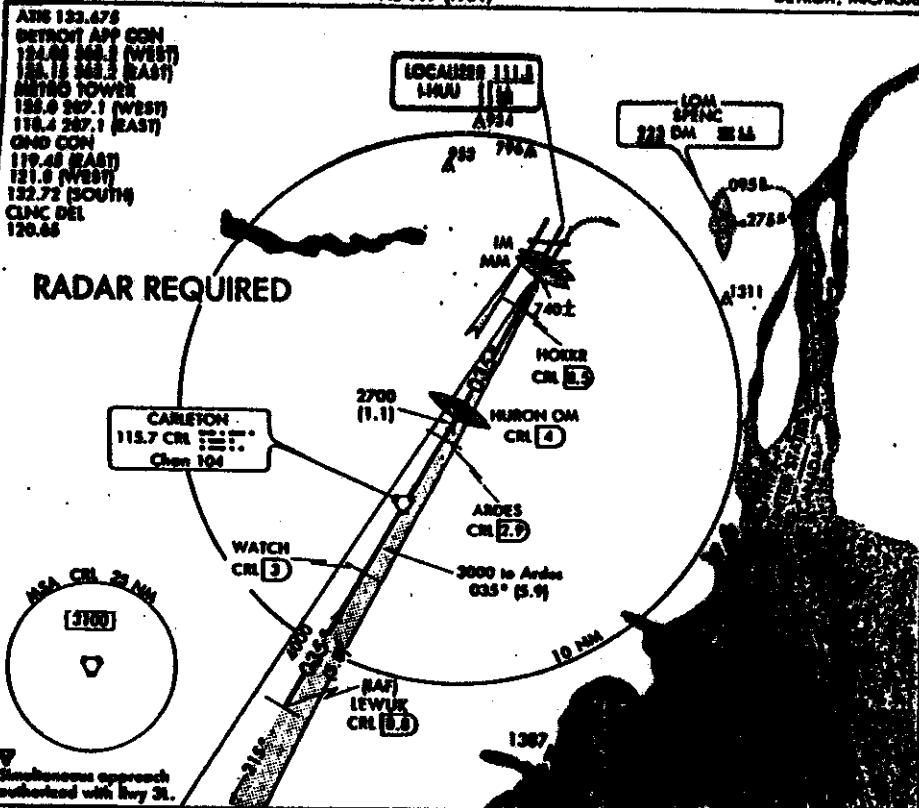
DETROIT METROPOLITAN WAYNE COUNTY

96116

51

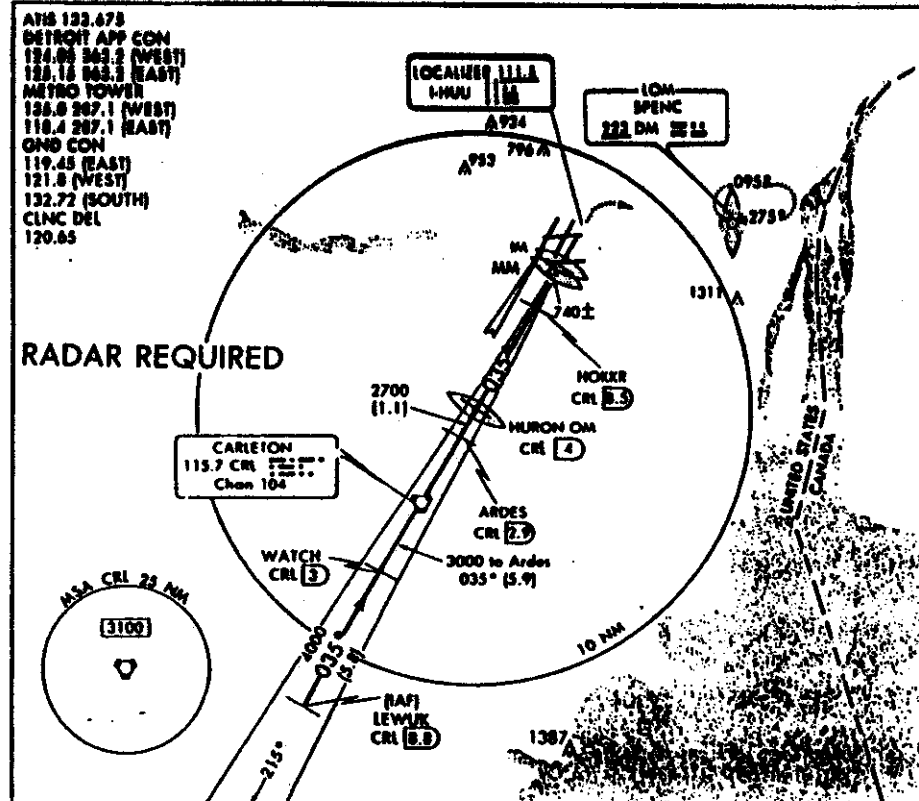
ILS RWY 3R

DETROIT METROPOLITAN WAYNE COUNTY (DTW)
AL-119 (FAA) DETROIT, MICHIGAN

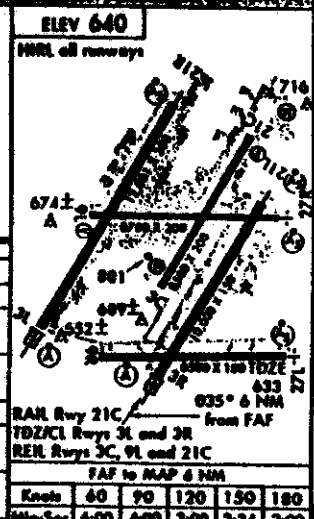


ILS RWY 3R

DETROIT METROPOLITAN WAYNE COUNTY (DTW)
AL-119 (FAA) DETROIT, MICHIGAN



LEWUK CR 8.8	WATCH CR 3	VORTAC	ARDES CR 2.9	MISSED APPROACH Climb to 1100 then climbing right turn to 3000 direct Spenc LOM and hold.
CATEGORY	A	B	C	D
S-ILS 3R	833/18 200 (200-N)			
S-LOC 3R	1180/24 347 (800-N)	1180/50 347 (800-1)	1180/60 347 (800-1½)	
CIRCLING	1180-1 341 (800-1)	1180-1½ 341 (800-1½)	1200-2 341 (800-2)	
HOKER/CR 8.5 DME M/N/MMA				
S-LOC 3R	1000/24 367 (400-N)		1000/40 367 (400-N)	
CIRCLING	1180-1 341 (800-1)	1180-1½ 341 (800-1½)	1200-2 341 (800-2)	

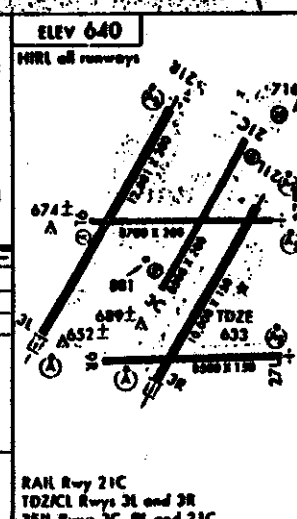


ILS RWY 3R

Amf 12A 96116

42°13'N-83°21'W
DETROIT METROPOLITAN WAYNE COUNTY (DTW)
DETROIT, MICHIGAN

LEWUK CR 8.8	WATCH CR 3	VORTAC	ARDES CR 2.9	MISSED APPROACH Climb to 1100 then climbing right turn to 3000 direct Spenc LOM and hold.
CATEGORY	A	B	C	D
S-ILS 3R	783/16 150 (RA 132)			
S-LOC 3R	1180/24 347 (800-N)	1180/50 347 (800-1)	1180/60 347 (800-1½)	
CIRCLING	1180-1 341 (800-1)	1180-1½ 341 (800-1½)	1200-2 341 (800-2)	
HOKER/CR 8.5 DME M/N/MMA				
S-LOC 3R	1000/24 367 (400-N)		1000/40 367 (400-N)	
CIRCLING	1180-1 341 (800-1)	1180-1½ 341 (800-1½)	1200-2 341 (800-2)	



ILS RWY 3R

Amf 12A 96116 (CAT II)

42°13'N-83°21'W
DETROIT METROPOLITAN WAYNE COUNTY (DTW)
DETROIT, MICHIGAN