

Figure 1 - Radar flight track of N669WR as it approached Spruce Creek (7FL6). Viewed from directly overhead and overlaid on a geographical area map with the top of the figure being north. Radar data provided by the FAA.

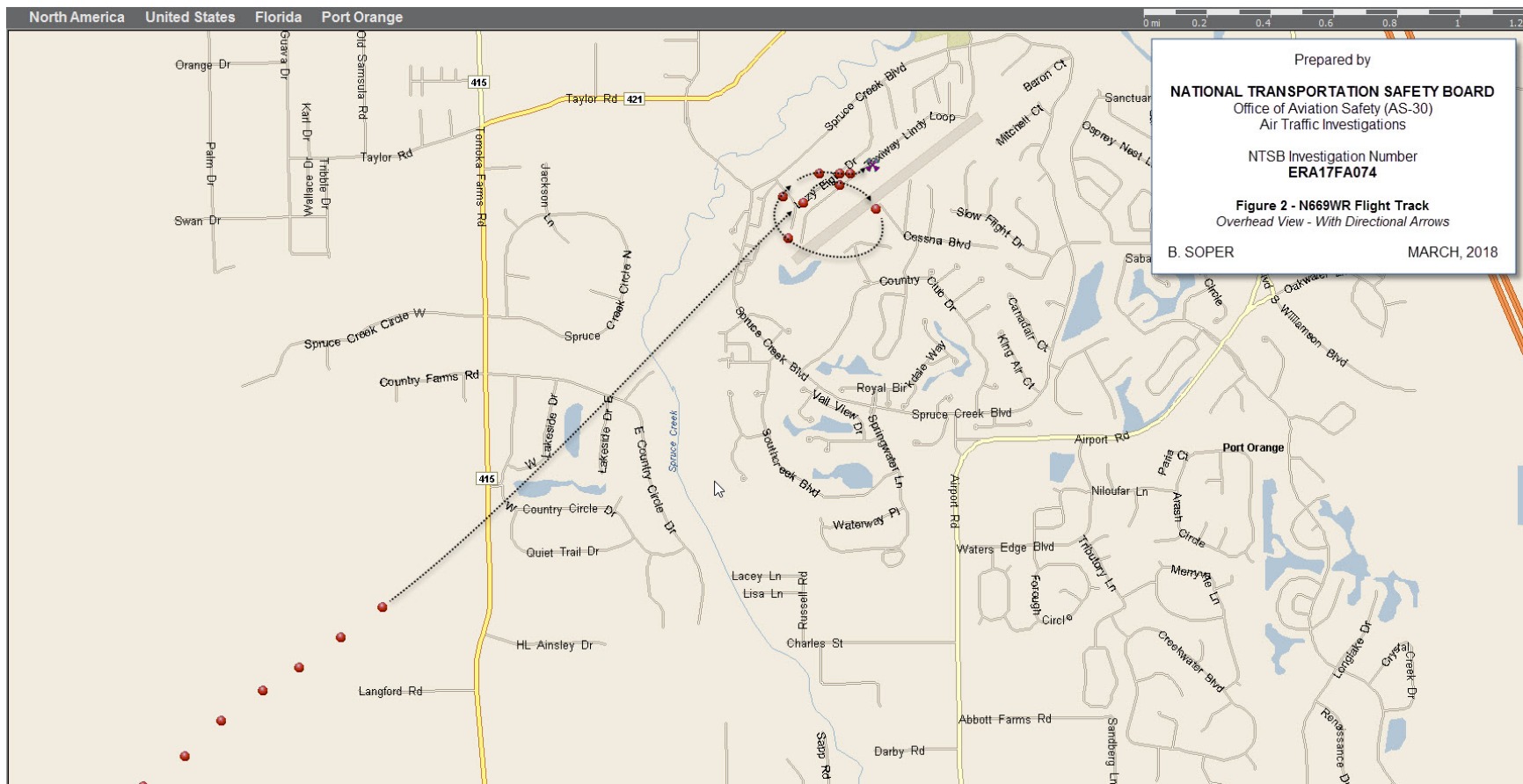


Figure 2 - Radar flight track of N669WR, final segment during the attempt to land at Spruce Creek Airport (7FL6). Viewed from directly overhead and overlaid on a geographical area map with the top of the figure being north. Radar data provided by the FAA.





Figure 3 - Radar flight track of N669WR, final segment during the attempt to land at Spruce Creek Airport (7FL6). Viewed from above at a slight angle and overlaid on satellite imagery with the top of the figure being north. Radar data provided by the FAA.

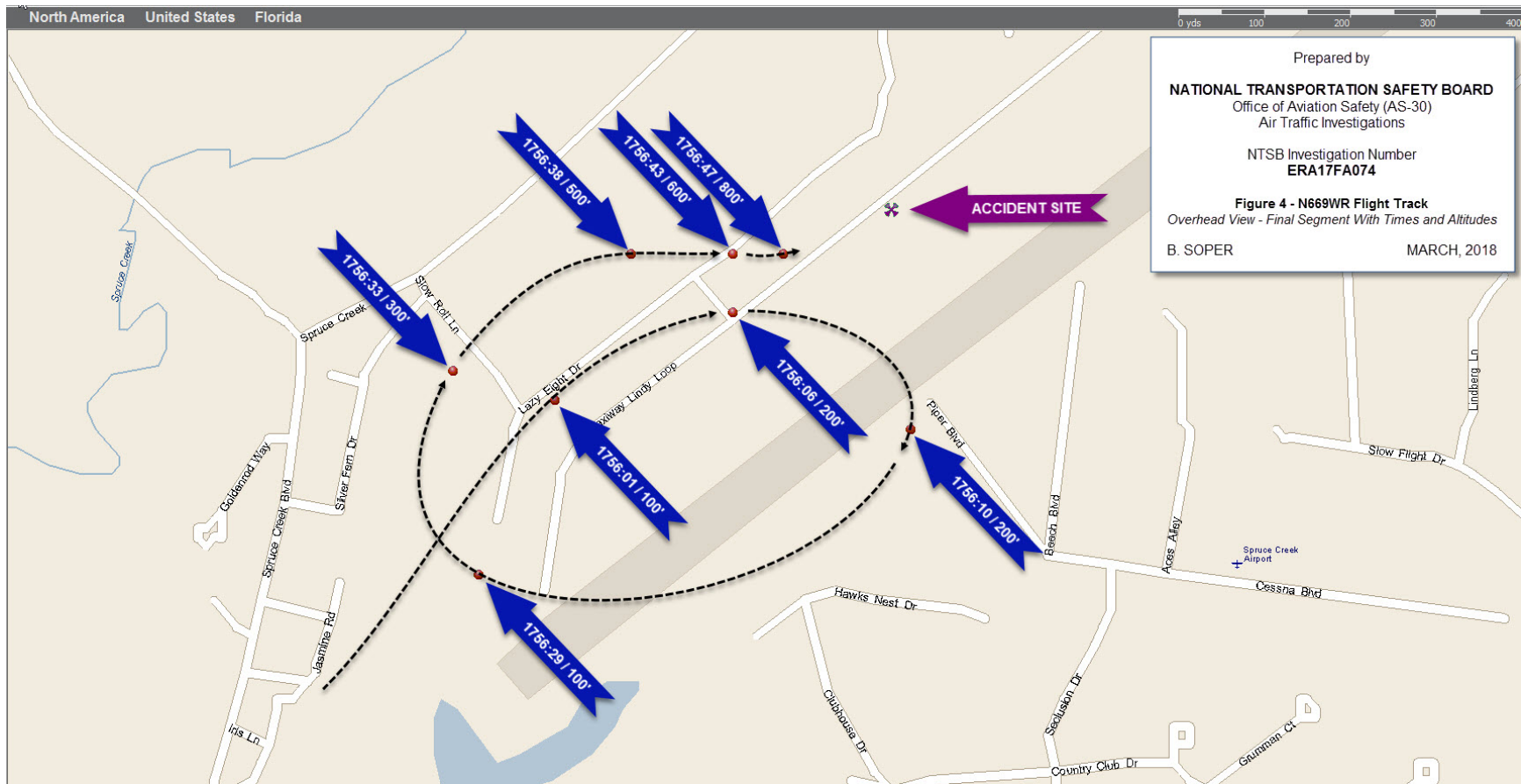


Figure 4 - Radar flight track of during the attempt to land at Spruce Creek Airport (7FL6). Viewed from directly overhead and overlaid on a geographical area map with the top of the figure being north. Radar data provided by the FAA