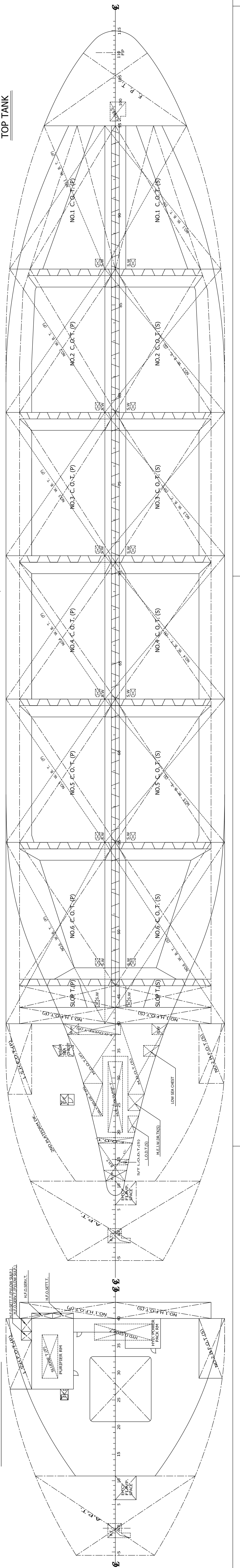
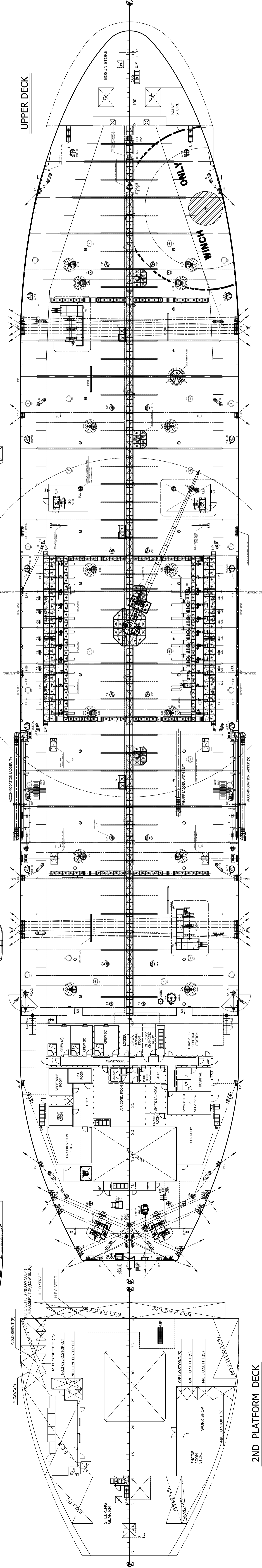
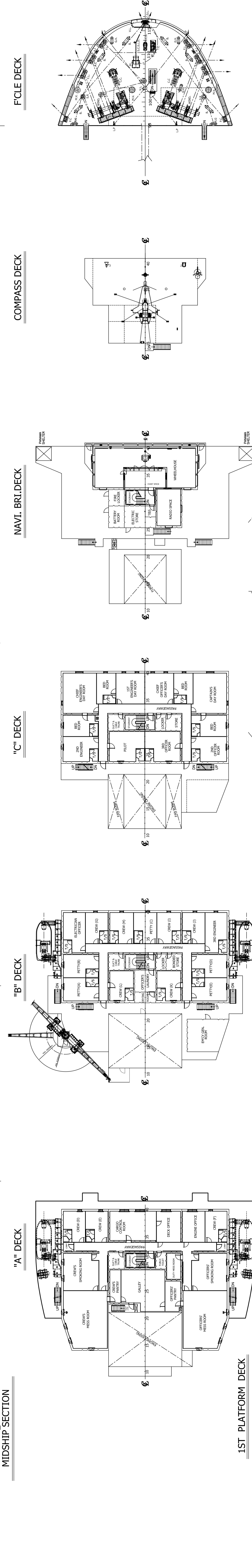
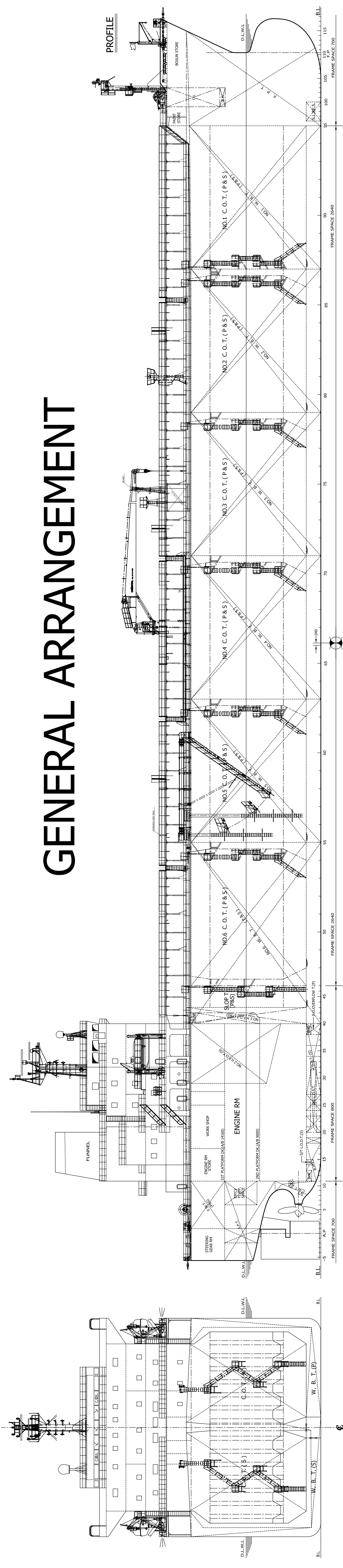


GENERAL ARRANGEMENT

PLAN HISTORY			
DATE	REV. NO.	DESCRIPTION	APP.
2008.4.21	F	FINAL DRAWING	J.C.LEE
			Y. S. WON



PRINCIPAL PARTICULARS

LENGTH	O/A	abt. 183.00m
LENGTH	B/P	174.00m
BREADTH		32.20m
DEPTH	M/D	19.10m
DRAFT	M/D(DESIGN)	11.00m
DRAFT	M/D(SCANT.)	13.00m
MAIN ENGINE	MAN B&W License 6550MC-C(MK-VII)	
	MCR : 12,900 BHP x 127.0 RPM	
	NCR : 10,965 BHP x 120.3 RPM	
SPEED SERVICE(85%MCR, 15%SLM)	abt. 14.90 Kts	
CLASS	Lloyd's Register of Shipping(URS)	
	+100A1 Double Hull Oil & Chemical Tanker ESP, Ship type 3, in association with approved lists of defined cargoes, Shipreg(USOA, FDA, CFI), LI, TMS, SPM, S-UMC, UNS	
COMPLEMENT	27 P + 6 SUEZ CREW	

FINAL DWG	
NO.	REVISION
BB - 04	

MTT MEXICO	IMO 9396725
HULL NO. H-1013	
SHIP TYPE 50,000 DWT OIL/CHEMICAL TANKER	
DESIGNED BY Y. S. WON	TITLE
APPROVED	GENERAL ARRANGEMENT
CHECKED	
DRAWN BY J.C.LEE	SCALE 1/200
DATE 2008.4.21	CLASS LR
DESIGNER SPP SHIPBUILDING CO., LTD.	REG. DSEC CO., LTD.