



National Transportation Safety Board

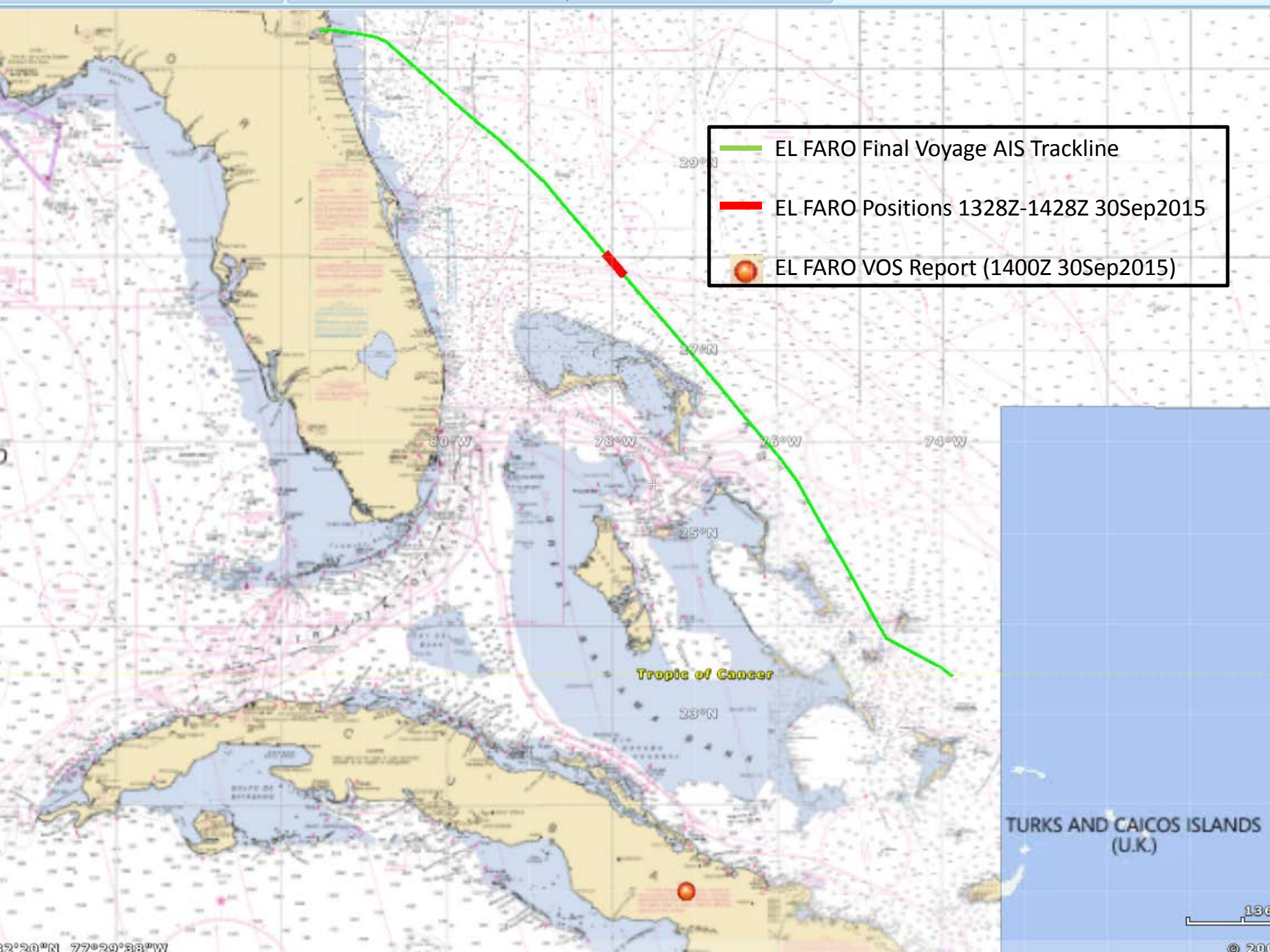
Office of Marine Safety
Washington, D.C. 20594-2000
December 13, 2016

**ATTACHMENT 11 to the METEOROLOGY GROUP FACTUAL REPORT
DCA16MM001**

Coast Guard summary of the ship report issued by *El Faro* during its accident voyage.

*Submitted by: Mike Richards
NTSB, AS-30*

EL FARO Voluntary Ships Observation Report



- EL FARO Final Voyage AIS Trackline
- EL FARO Positions 1328Z-1428Z 30Sep2015
- EL FARO VOS Report (1400Z 30Sep2015)

TURKS AND CAICOS ISLANDS (U.K.)

130

© 2015

Original Report Text

AC WFJK.26868

XU 187

TO shipobs@noaa.gov

FM bridge.WFJK

DT 201509301740

SB SS EL FARO WEATHER OBSERVATION

BBXX WFJK 30143 99210 70771 41598 73408 10306
20290 40072 70288 86498 22234 00278 20402 310//
40804 80294=

Translation of Text

Call sign: WFJK

Day of month: 30

Time of Obs: 1400

Wind indicator: 3 (wind speed estimated in knots)

Lat: 21.0

Quadrant: 7 (North lat, west long)

Long: 77.1

Precipitation data indicator: 4 (standard for US VOS ships)

Weather data indicator: 1 (included)

Cloud Height: 600-1000 meters

Visibility: 20 to 50 km (11 nm to 27nm)

Total Cloud Cover: 7 (7/8ths or more but not totally covered)

Wind Direction: 34 (335-344 deg)

Wind Speed: 08 (beaufort scale 2, mean speed 5 knots, light breeze) pg 37 handbook

Sign of air temp: 0 (temperature is positive)

Air temperature: 30.6deg C

Sign of dewpoint: 0 (positive value)

Dewpoint Temp: 29.0deg C

Sea level pressure: 1007.2 hectopascals

Three hour pressure tendency: not given

Translation of Text (cont'd)

Present weather: 02 (state of the sky on the whole unchanged during the past hour)

Past weather: 88 (showers which was the same the last synoptic hour)

Amount of C_L or C_M clouds present: 6 eighths

C_L , Low cloud type: 4 (stratocumulus by spreading out of cumulus; cumulus may also be present)

C_M , Middle Cloud type: 9 (altocumulus of a chaotic sky, generally at several levels)

C_H , High cloud type: 8 (cirrostratus not increasing and not covering whole sky)

222 – place holder for section 2 indicator (oceanographic data)

Ships true course: 3 (SE)

Ships average speed: 4 (16-20kts)

Sign and type of sea surface indicator: 0 (positive or zero intake measurement)

Sea surface temperature: 27.8degC

Period of waves: 04 seconds

Height of waves: 02 (3 or 4 ft)

Direction of primary swell: 10 (95-104degT)

Direction of secondary swell: Not reported

Primary swell wave period: 08 seconds

Height of primary swell waves: 04 (6 or 7 ft)

Period and height of secondary swell waves: not reported

Ice accretion: not reported

Sign and method of determining wet bulb temperature: 0 (positive or zero measured)

Wet bulb temperature: 29.4deg C