



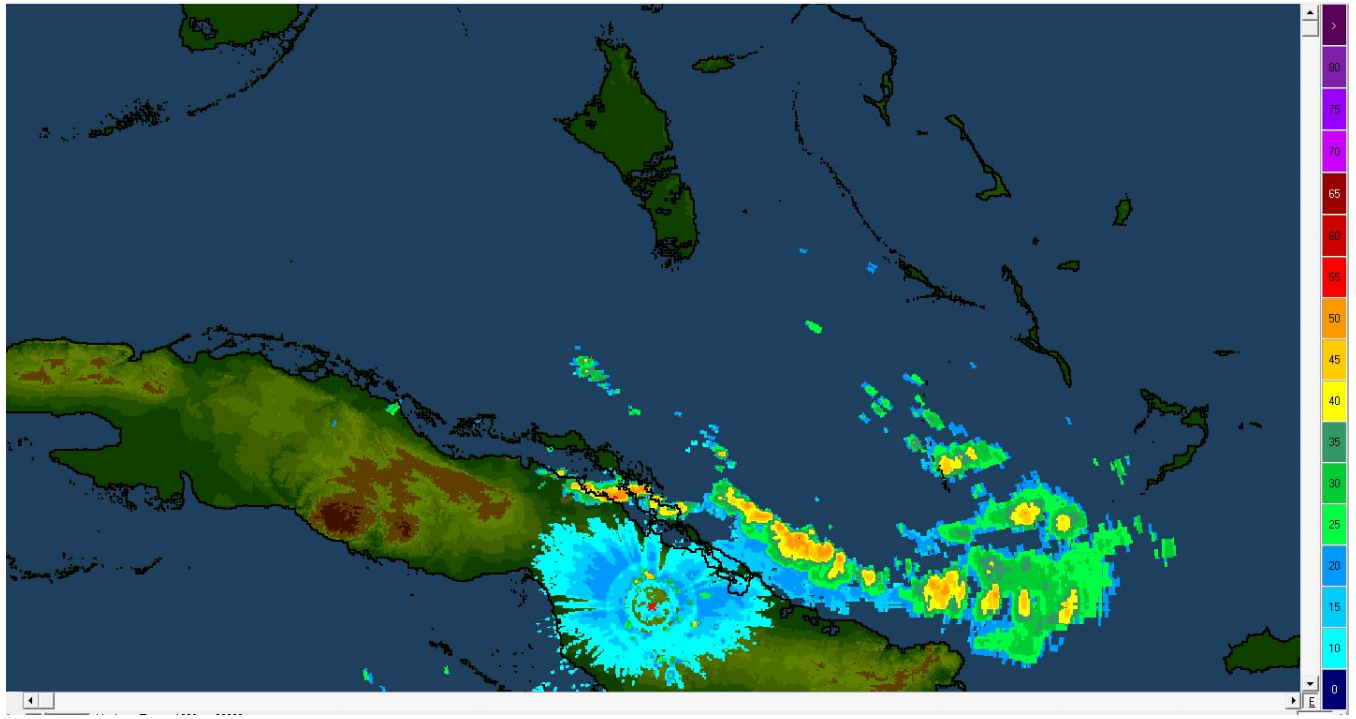
National Transportation Safety Board

Office of Marine Safety
Washington, D.C. 20594-2000
December 13, 2016

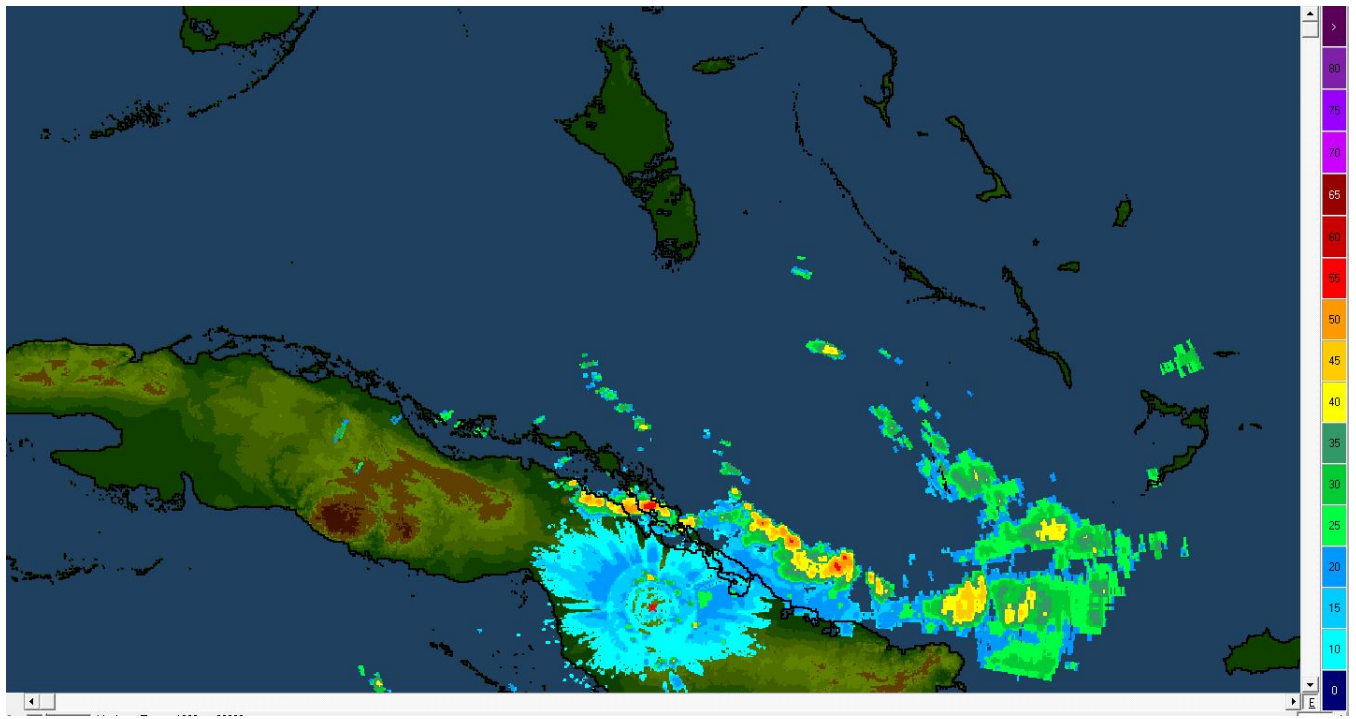
ATTACHMENT 10 to the METEOROLOGY GROUP FACTUAL REPORT
DCA16MM001

Composite reflectivity images from the Camaguey, Cuba, radar between 0615 EDT and 0900 EDT on October 1, 2015.

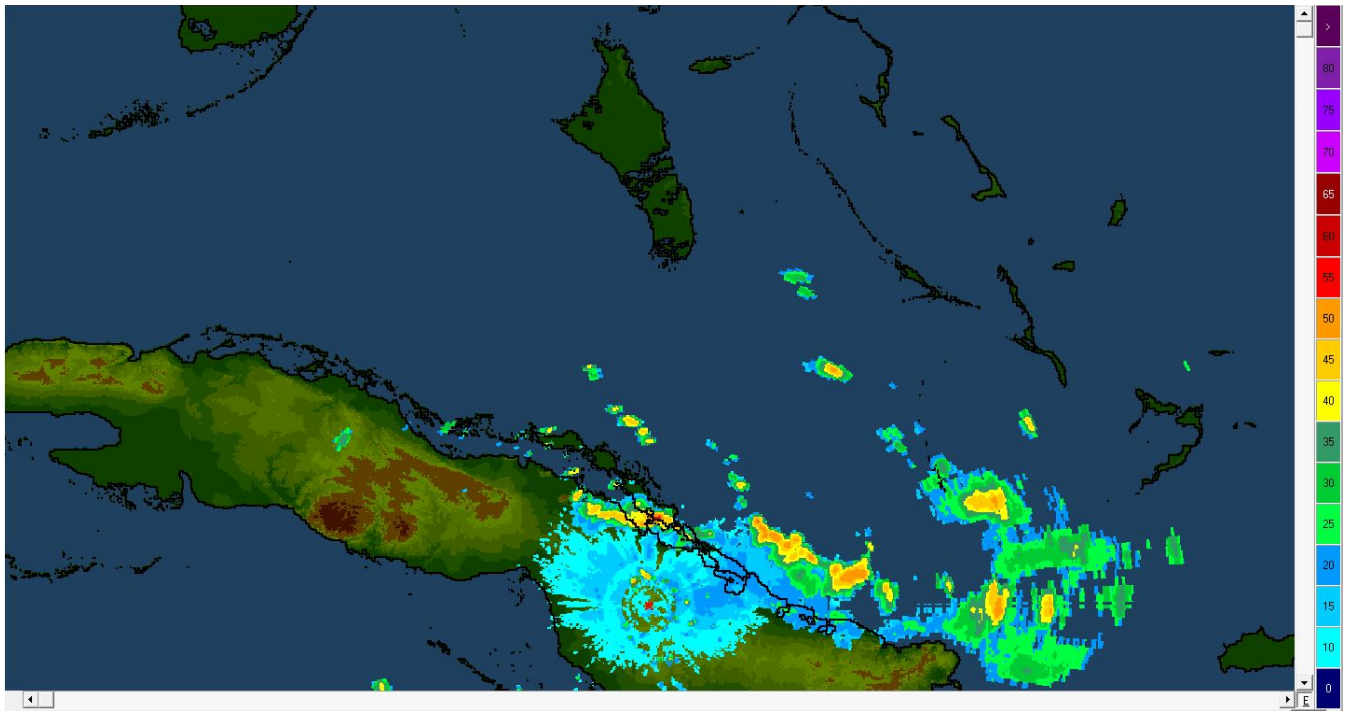
Submitted by: Mike Richards
NTSB, AS-30



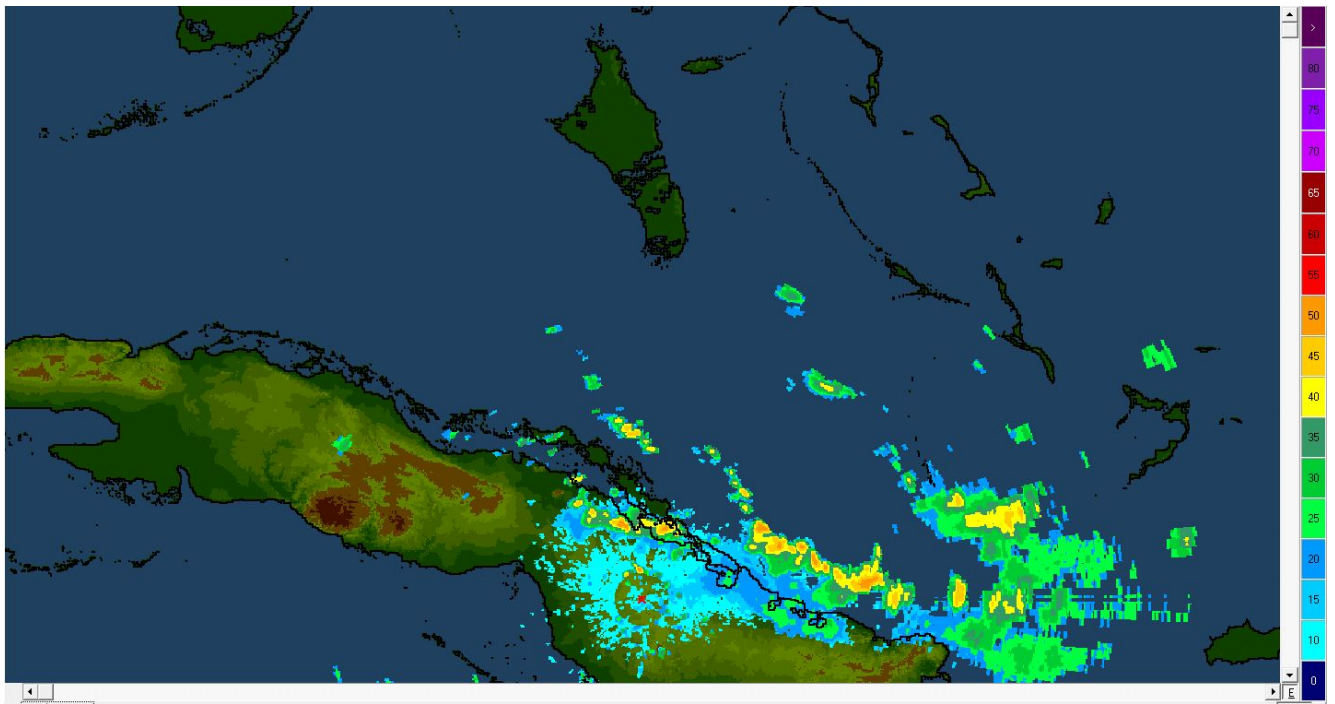
Camagüey composite reflectivity image from 0615 EDT.



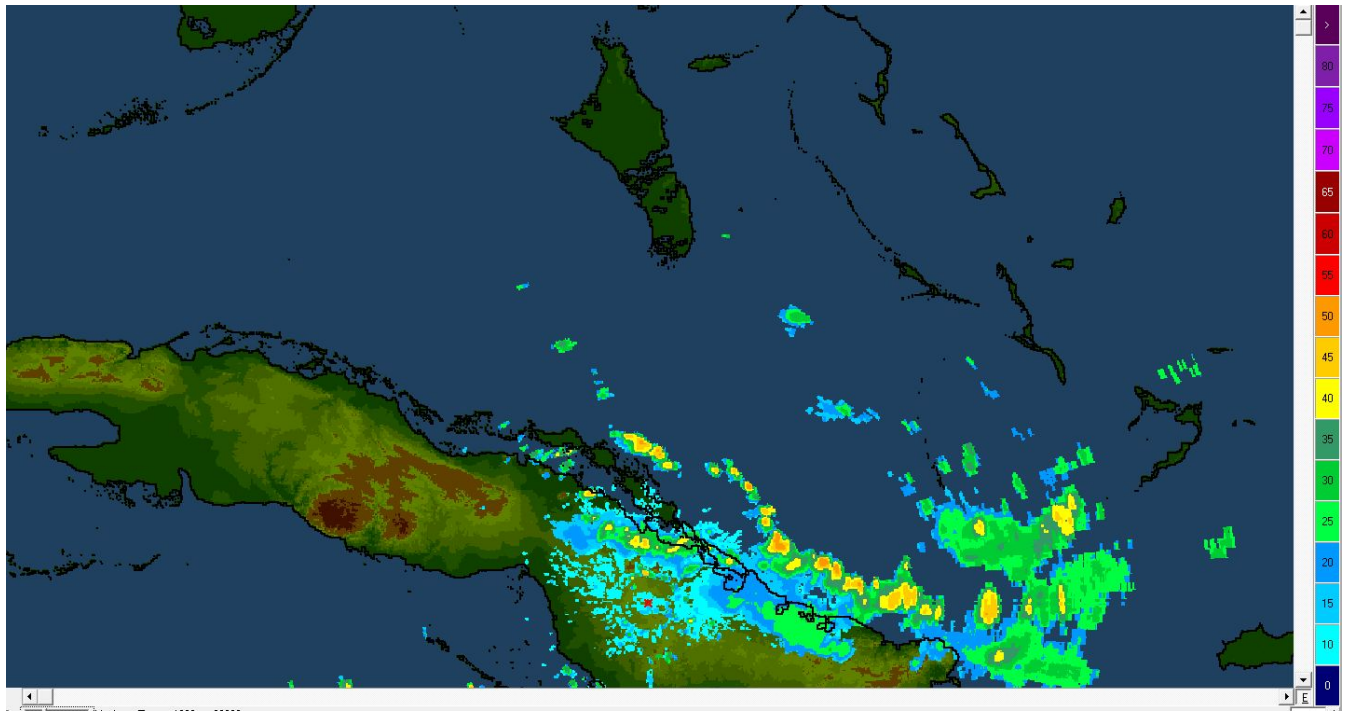
Camagüey composite reflectivity image from 0630 EDT.



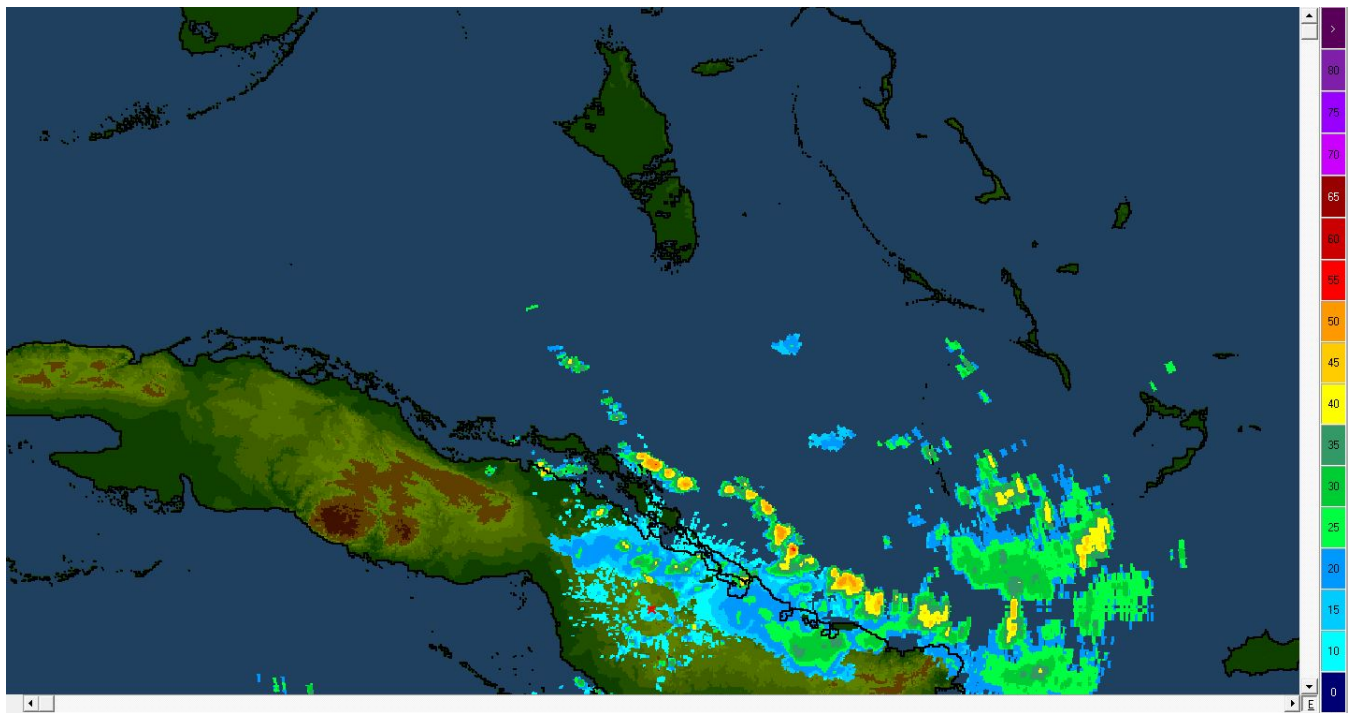
Camagüey composite reflectivity image from 0645 EDT.



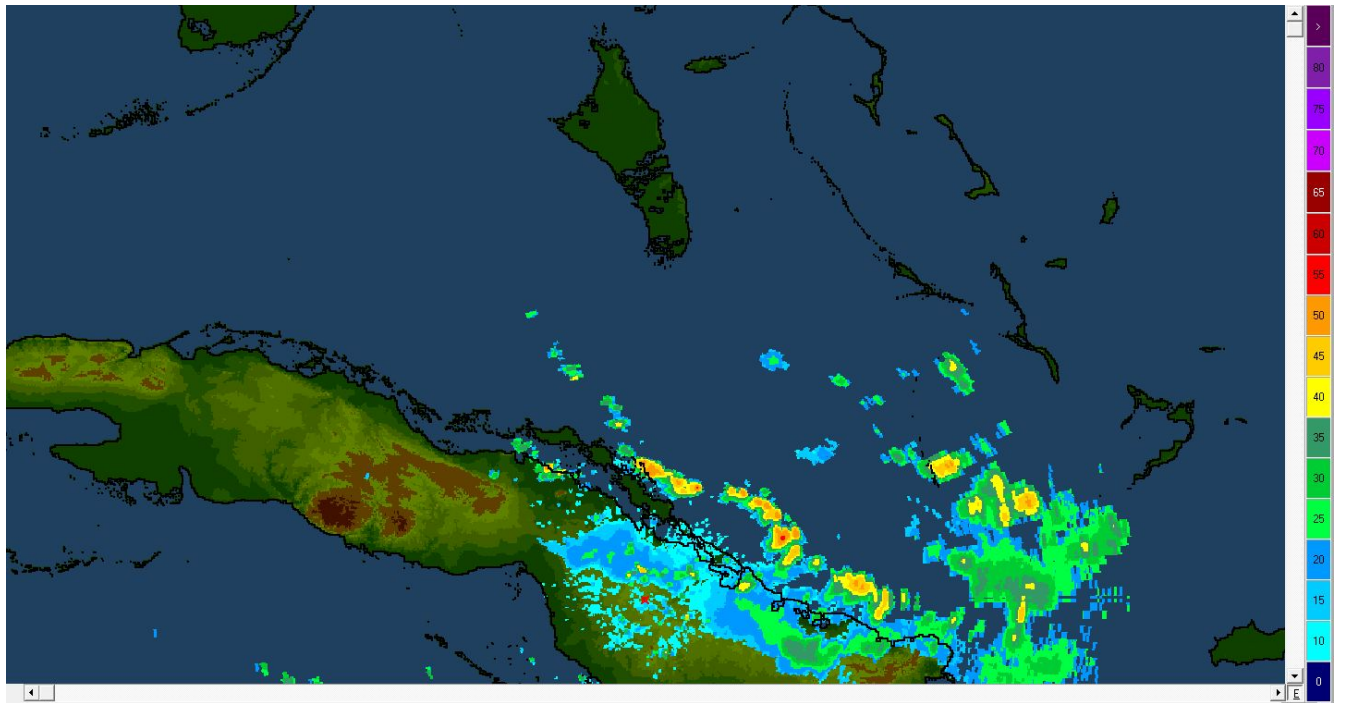
Camagüey composite reflectivity image from 0700 EDT.



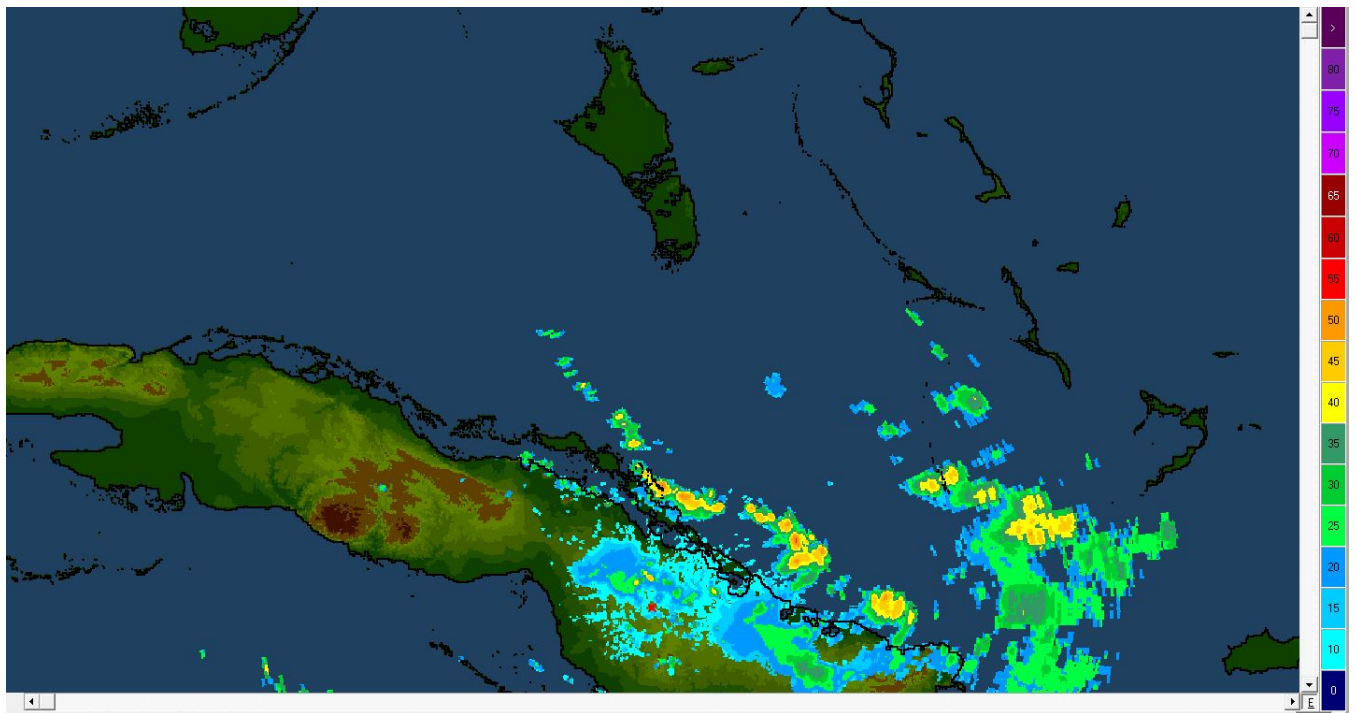
Camagüey composite reflectivity image from 0715 EDT.



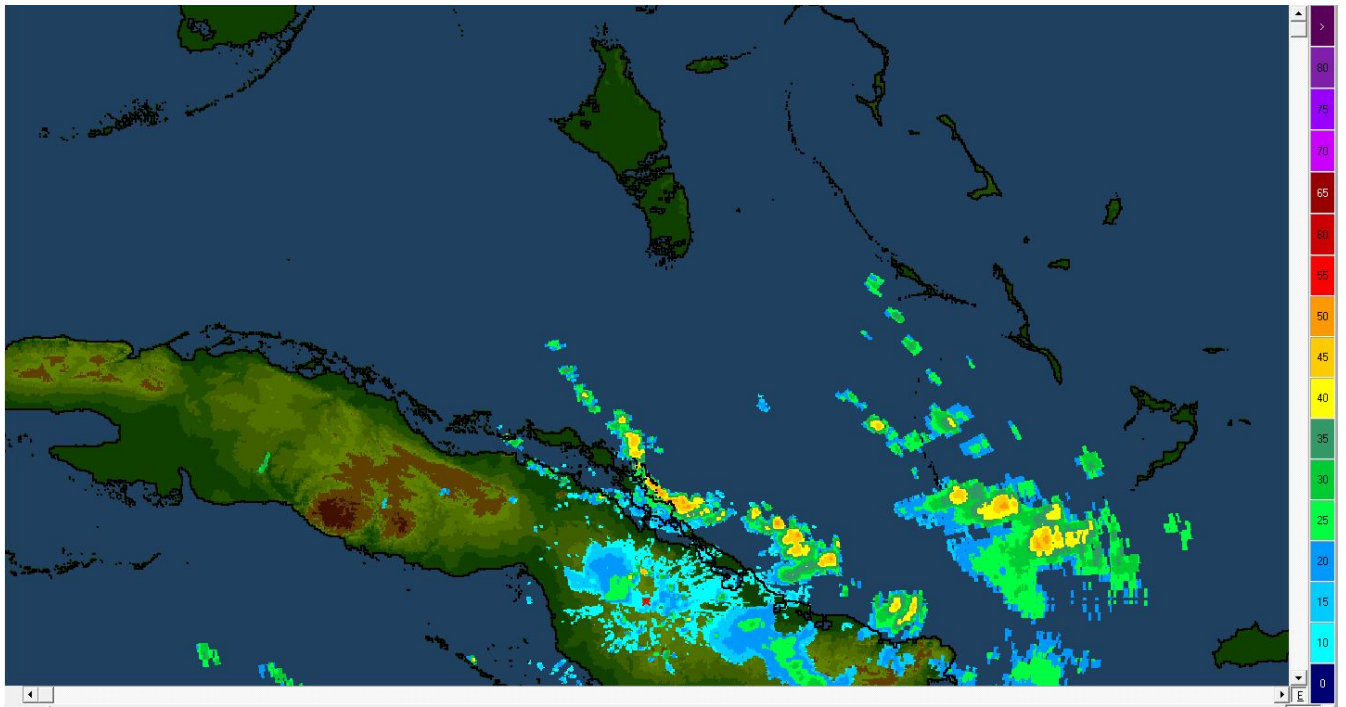
Camagüey composite reflectivity image from 0730 EDT.



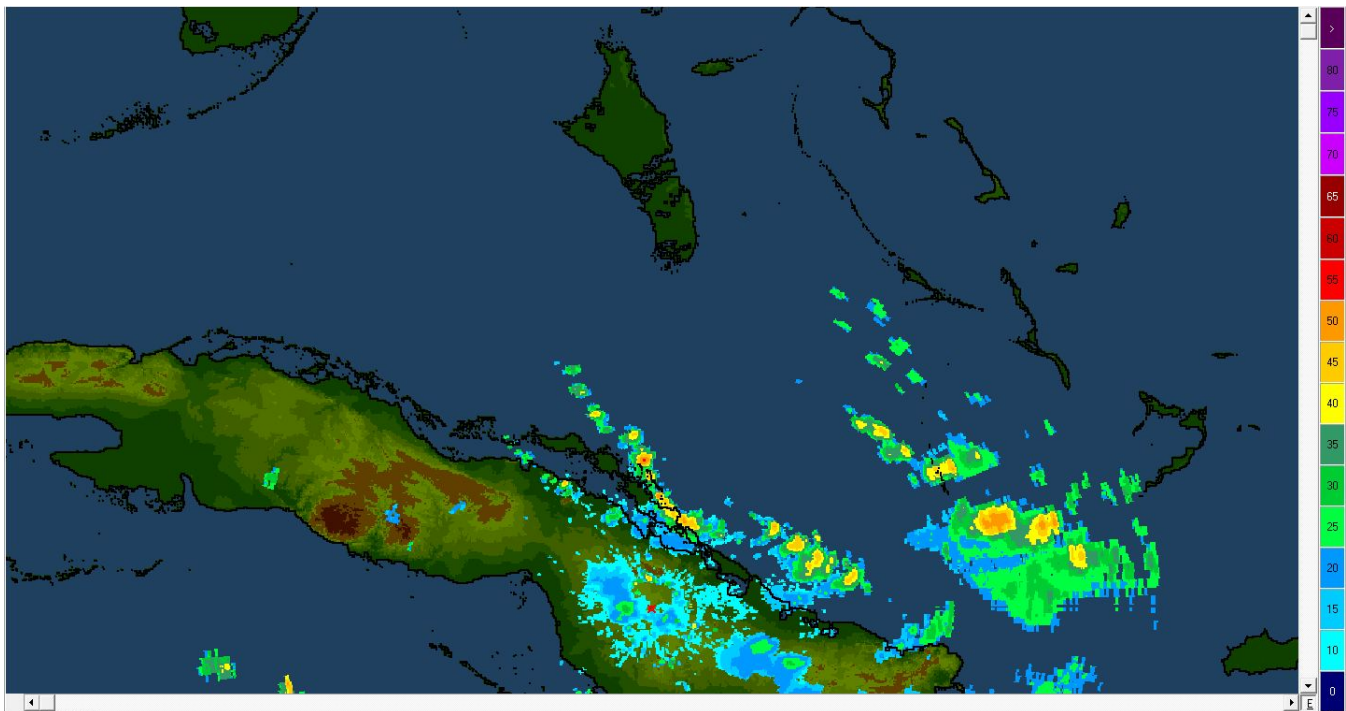
Camagüey composite reflectivity image from 0745 EDT.



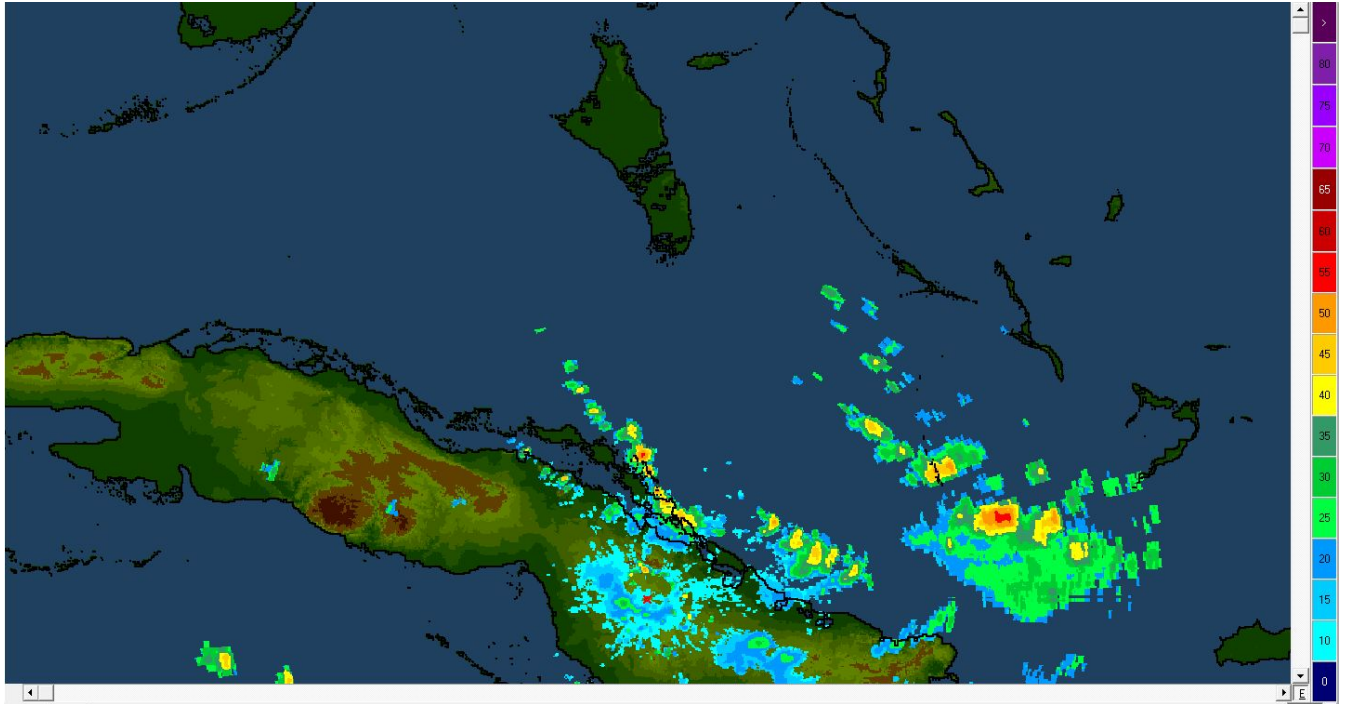
Camagüey composite reflectivity image from 0800 EDT.



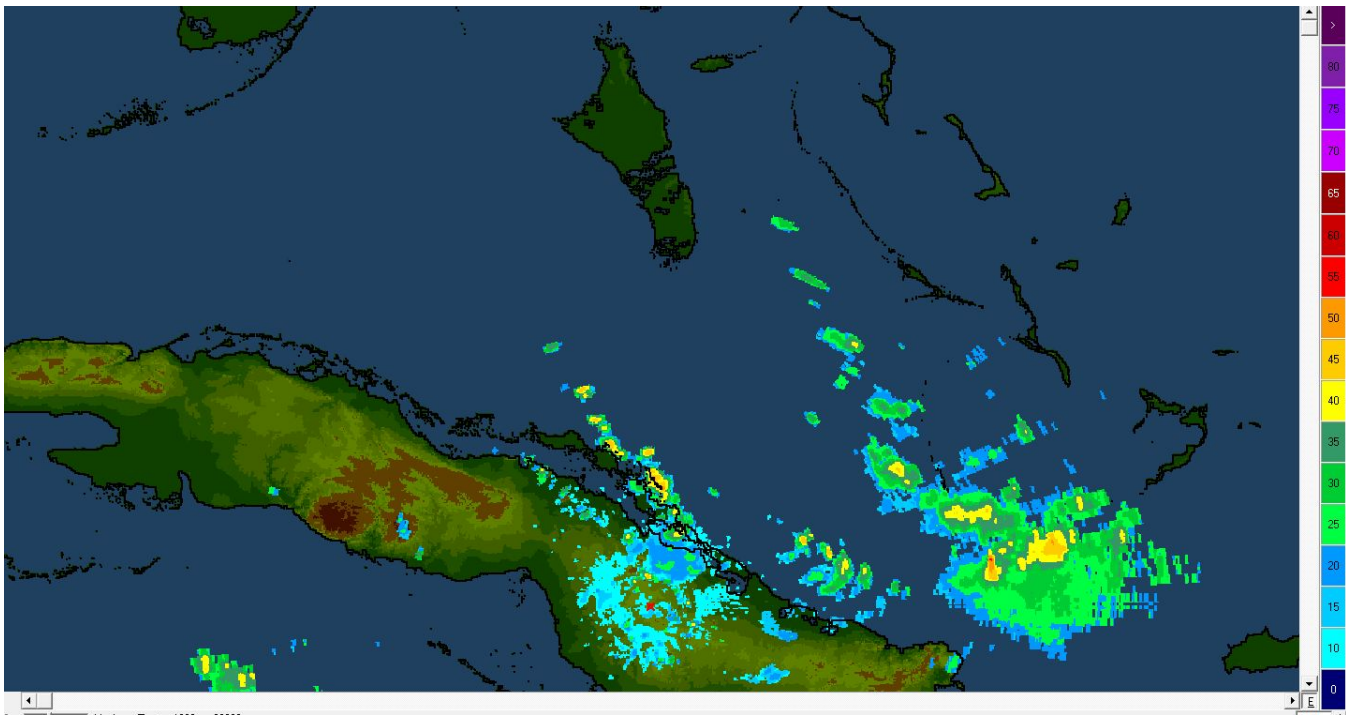
Camagüey composite reflectivity image from 0815 EDT.



Camagüey composite reflectivity image from 0830 EDT.



Camagüey composite reflectivity image from 0845 EDT.



Camagüey composite reflectivity image from 0900 EDT.