

1 pump split into 2 circuits.
 Pump on and off by electric clutch.
 Each Stanley controlled by flow control.
 when Hyd. Pump is engaged 1 or the other or both Stanleys
 can pump at the same time.

HMS "BOUNTY" - Dewatering Pump Work Sheet

John Deere - Joey Havalana (319) 292-5273) 4/5/04 telecon. - John Deere Option Code 5203 Accessory Drive - Drive option that provides a SAE "A" female spline drive facing forward and a SAE "B" female spline drive facing aft (CCW rotation as viewed from rear of engine facing forward).

Clutch

- Logan Clutch - (800) 525-8824 - PTO-250 Hydraulic Clutch \$. Clutch mounted to SAE "B" drive and provides SAE "B" output for pump. Control of clutch is via a hydraulic line connected to transmission hydraulics. Clutch does not require any flow. Minimum activation pressure is 80 psi, maximum is 120 psi. Will require a shutoff valve, suitable for operating pressure of transmission, to be used as the "control valve". May require a pressure reducing orifice depending upon the transmission operating pressure., \$1585.00

FAX - 594 - 9721

Hydraulics:

Marine

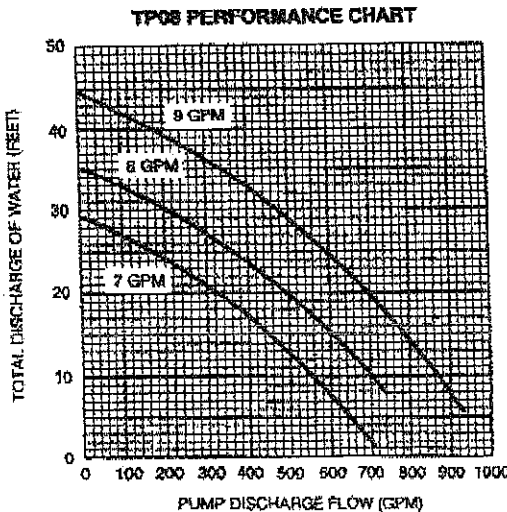
→ 594 - 7550

- Rockland Hydraulics (John - 207-594-~~7300~~) - Vickers V-20 Constant Flow (9 gpm at 2000-psi), SAE "B" 2 bolt flange mount and SAE "B" 13 tooth drive shaft CW Rotation, \$410.54
- Rockland Hydraulics - 12 gal aluminum tank, \$130.49
- Filter - Northern Hydraulics - 35 gpm Cartridge Filter (10 micron) #4022-2405, \$24.99
- Flow Control Valve - Northern Tools - 1/2" Variable Flow Control Valve #2040-2404, \$59.99
- Heat Exchanger - Rockland Hydraulics - 2" by 3/4" Heat Exchanger w/zinc anodes (#2254-1-7). Uses discharge flow from raw water engine cooling. 2" flow thru ensures no obstructions to cooling water, \$333.00
- Flow Gauge - 0-30 GPM - Northern Hydraulics #2048-2404, \$219.99
- Pressure Gauge - 0-3000 psi - Northern Hydraulics #53785-2404, \$24.99
- Various Hose & Connectors
- Hydraulic motor for existing bridge pump

Water Pump:

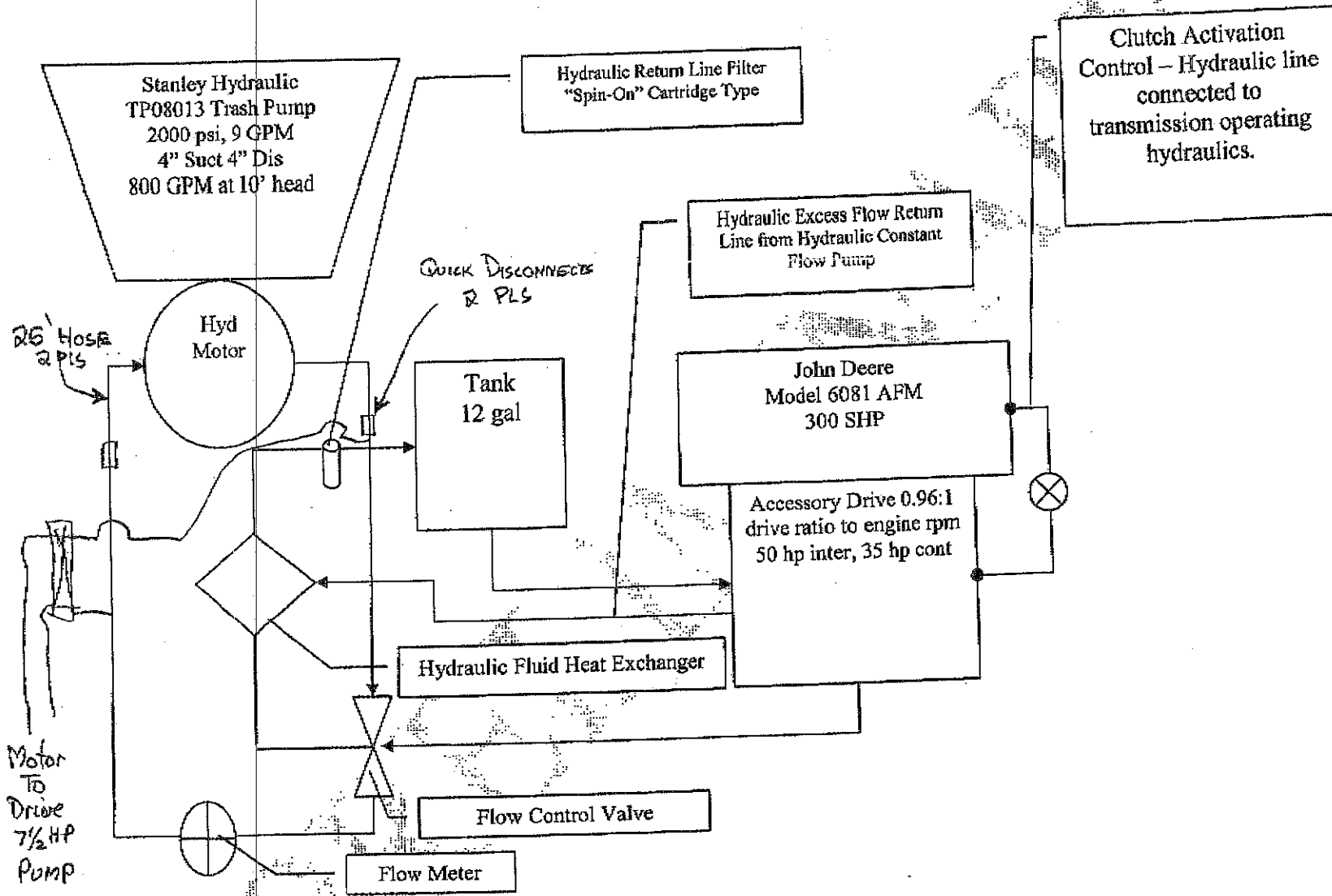
- Stanley TP-08 Hydraulic Centrifugal Pump Distributors - BCA Equipment, NY -(800-717-0974), \$1865
- *Quick Disconnects and 25' Hoses*

DRAFT



Eve
NEW DRAULIC TOOLS .COM
Jeff

HMS "BOUNTY" - Dewatering Pump Work Sheet



DAVID B. WYMAN, P.E. and Associates
NAVAL ARCHITECT - MARINE SURVEYOR

ACCREDITED MARINE SURVEYOR - SAMS #240
SOCIETY OF NAVAL ARCHITECTS AND MARINE ENGINEERS - MEMBER
REGISTERED PROFESSIONAL ENGINEER - FLORIDA & MAINE
LICENSED USCG MASTER AUX, SAIL & POWER

P. O. BOX 505, 32 HATCH COVE DRIVE, CASTINE, ME 04421
(207) 326-9406 FAX 207-326-4096 207-266-5523 CEL

david@dwymanpe.com

Date: 5-6-04

FAX

To: John, Rockland Marine Hydraulics

From: David Wyman

Subject: Hydraulic System for HMS Bounty

1. Attached please find 2 sheets prepared by my associate Lance Burton who had talked with you previously. I have added a hydraulic motor to drive an existing 7.5 hp bilge pump and quick disconnects with 25 feet of hose to the Stanley Trash Pump.
2. I am hoping that you can put together the entire system, box it up and let me pick it up at your facility and delivery it to the ship for their installation approximately the 26th of May.
3. I am sure you will need more details, so feel free to call, 326-9406
4. The owner of the HMS Bounty, Bob Hansen will be making the business arrangements with you once we have determined exactly what components are needed and you have been able to prepare a cost proposal.

Thanks



David Wyman

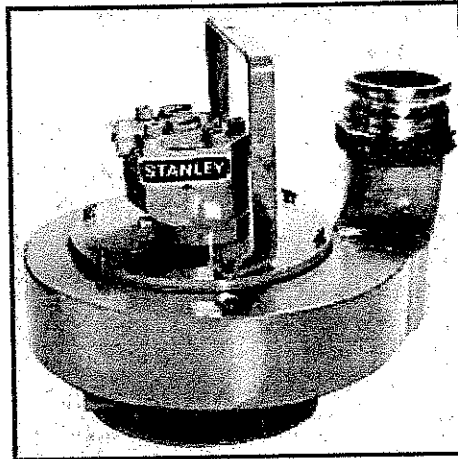


Welcome to **BCA Equipment Company** representing **Stanley Hydraulic Tools** for over "25" years. We are a full line dealer and carry the complete line of **Stanley Underwater tools in stock.**



BREAKERS HAMMERS SAWS DRILLS POWER WRENCHES PUMPS
HOME ABOUT US CONTACT US ORDERING

TP08 TRASH PUMP



The Stanley TP08 Trash Pump is a lightweight, heavy duty pump capable of pumping high volumes of water, sand slurries, gravel, sludge and solids up to 3 inches [75 mm] in diameter. The TP08 is self priming and can run dry without damage to the motor, bearings or impeller.

The TP08 has been designed to use an **HTMA** type II hydraulic circuit. Using only 9 gpm [34 lpm] of hydraulic flow the TP08 will pump 800 gpm [3,028 lpm] at a 10 foot [2.54 m] head. The free flow impeller and 4 inch [100 mm] inlet and outlet combine to make the TP08 one of the most efficient pumps in the business. Weighing only 59 pounds [27 kg] and with its convenient handle, the TP08 can easily be handled by one diver.

The TP08 and HP1 Compact Power Unit make a powerful, portable team for high volume de-watering and trash applications. The heavy duty construction of the TP08 features a fabricated, all steel, volute and abrasion resistant cast iron impeller. The volute uses replaceable UHMW polyethylene wear plates to reduce wear and extend pump life.

The heavy duty Stanley HYREVZ hydraulic motor is self lubricating. Routine maintenance for the TP08 is easy. The top cover is attached to the volute with six wing nuts so cleaning and inspection can be accomplished in just a few minutes.

OPERATION AND PERFORMANCE

ITEM	U.S.A.	METRIC
Capacity	800 GPM	3028 LPM
Weight	59 pounds	26.7 kg
Length	19 inches	48.3 cm
Width	15 inches	38.1 cm
Pressure	2000 PSI	140 bar
Flow Range	7-9 GPM	26-34 lpm
Maximum Flow	9 GPM	34 lpm

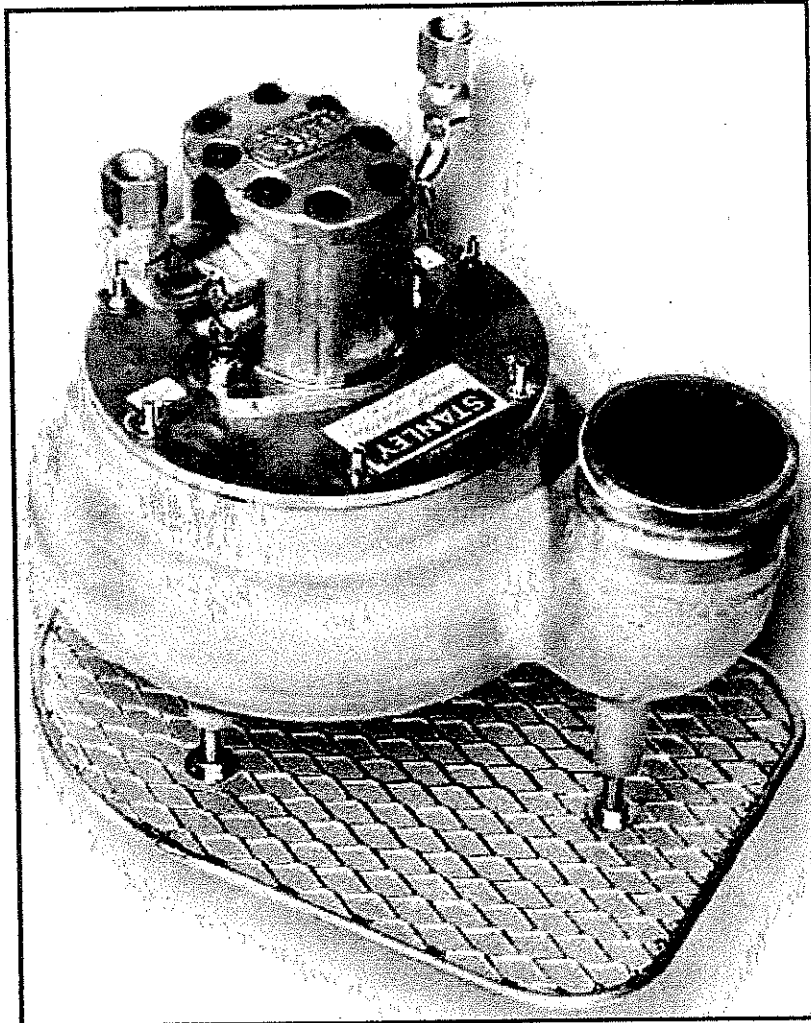


Welcome to *BCA Equipment Company*
representing *Stanley Hydraulic Tools* for
over "25" years. We are a full line dealer
and carry the complete line of
Stanley Underwater tools in stock.



BREAKERS HAMMERS SAWS DRILLS POWER WRENCHES PUMPS
HOME ABOUT US CONTACT US ORDERING

TP04 TRASH PUMP



The Stanley TP04 Trash Pump is the lightest, most efficient way to move large quantities of liquids with concentrations of solids up to 4", 25% by volume. There's no priming necessary with our trash pump either, so you can place them wherever they're needed quickly and easily. Just drop them into the material and your ready to go. The pumping chamber is designed so the tough urethane impeller spins above the flow of liquid and solids to reduce blockages and jamming.

This not only reduces overall pump wear, but keeps the liquid moving fast enough to move high volumes of solids at much higher head than non-submersible pumps. Maintenance and inspection of the TP04 is simple. Simply remove a few wing nuts to lift off the pump cover, clean out the bowl or change the impeller and you're back

to work in less than five minutes. Like all Stanley pumps, the TP04 can be run dry without damage. The TP04 is available with either a cast steel or aluminum bowl with a rubber liner.

Either bowl can handle up to 4" [100 MM] in diameter solids. The steel bowl version is appropriate for pumping highly abrasive solids, corrosive chemicals and petroleum products. The lightweight aluminum bowl version, with a factory replaceable rubber liner, is a general purpose pump for most applications where portability is the primary concern. The TP04 with the aluminum bowl and rubber liner should not be used for petroleum products. The TP04 is designed to run off a HTMA type III hydraulic circuit as a minimum.

OPERATION AND PERFORMANCE

ITEM	U.S.A.	METRIC
Capacity	800 GPM	3000 LPM
Weight Steel Aluminum	– 130 pounds 56 pounds	– 60 kg 26 kg
Length	18-3/4 inches	47.6 cm
Width	19-1/2 inches	49.6 cm
Pressure	1500-2000 PSI	105-140 bar
Flow Range	12-18 GPM	45-60 lpm
Maximum Flow	16 GPM	60 lpm
Porting	3/4" NPTF	3/4" NPTF
Connect Size and Type	3/4" NPTM	3/4" NPTM
Discharge Size & Type	4" Female Threaded	4" Female Threaded

ORDERING INFORMATION

Model	Capacity	Order Number
TP04	800 GPM Steel Bowl	TP04013
TP04	800 GPM Aluminum Bowl	TP04014

While Stanley tools are very reliable they will eventually need service. Using the proper tools and test equipment will save you time, effort and frustration.

TEST EQUIPMENT

Part Number	Description
3189	20 gpm/75 Imp Flowmeter
4182	Flow/Pressure Tester

Click here for information on [Stanley's Warranty Policy](#).

[BREAKERS](#) - [HAMMERS](#) - [SAWS](#) - [DRILLS](#) - [POWER](#) - [WRENCHES](#) - [PUMPS](#)
[HOME](#) - [ABOUT US](#) - [CONTACT US](#) - [ORDERING](#)

©1999 BCA Equipment Company . All rights reserved.

Site built by [USIIP](#), Inc.

Porting	#10 SAE Pressure Side #12 SAE Return Side	#10 SAE Pressure Side #12 SAE Return Side
Connect Size and Type	1/2" MPT Pressure Side 3/4" MPT Return Side	1/2" MPT Pressure Side 3/4" MPT Return Side
Discharge Size & Type	4 inch Camlock	4 inch Camlock

ORDERING INFORMATION

Model	Capacity	Order Number
TP08	800 GPM	TP08013

While Stanley tools are very reliable they will eventually need service. Using the proper tools and test equipment will save you time, effort and frustration.

TEST EQUIPMENT

Part Number	Description
3189	20 gpm/75 Imp Flowmeter
4182	Flow/Pressure Tester

Click here for information on [Stanley's Warranty Policy](#).

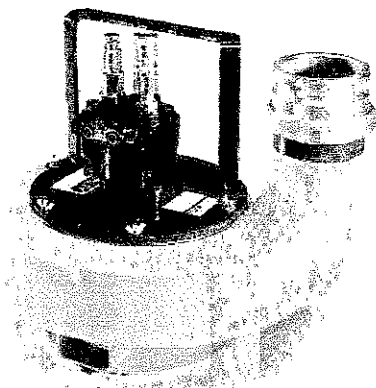
BREAKERS - HAMMERS - SAWS - DRILLS - POWER - WRENCHES - PUMPS
HOME - ABOUT US - CONTACT US - ORDERING

©1999 BCA Equipment Company . All rights reserved.

Site built by [USIP, Inc.](#)

Trash Pump

TP08



SPECIFICATIONS

ITEM	U.S.A.	METRIC
Capacity	800 gpm	3,028 lpm
Weight	59 lbs	26.7 kg
Height (over handle)	16.5 in.	42 cm
Length	19 in.	48.3 cm
Width	15 in.	38.1 cm
Pressure	2,000 psi	140 bar
Flow Range	7-9 gpm	26-34 lpm
Maximum Flow	9 gpm	34 lpm
Porting	#10 SAE (Press.) #12 SAE (Ret)	
Connect Size and Type	1/2 in. Male Pipe (Press.) 3/4 in. Male Pipe (Ret)	
Discharge Diameter	4 in. Camlock	
Inlet Diameter	4 in.	100 mm

The Stanley **TP08** Trash Pump is a light-weight, heavy duty pump capable of pumping high volumes of water, sand slurries, gravel, sludge and solids up to 3 in./75 mm in diameter. The **TP08** is submersible, self priming and can run dry without damage to the motor, bearings or impeller.

The **TP08** has been designed to get the most from an HTMA Type II hydraulic circuit. Using only 9 gpm/34 lpm of hydraulic flow, the **TP08** will pump over 800 gpm/3,028 lpm at a 10 ft/2.54 m head. The free-flow impeller and 4 in./100 mm inlet and outlet combine to make the **TP08** one of the most efficient pumps in the business.

Weighing only 59 lbs/27 kg and with its convenient handle, the **TP08** can easily be

handled by one operator. The **TP08** and the Stanley **HP1** Compact Power Unit make a powerful, portable team for high volume de-watering and trash pump applications.

The heavy-duty construction of the **TP08** features a fabricated, all steel volute and abrasion resistant cast iron impeller. The volute uses replaceable UHMW polyethylene wear plates to reduce wear and extend pump life. The heavy-duty Stanley **HYREVZ™** hydraulic motor is self-lubricating.

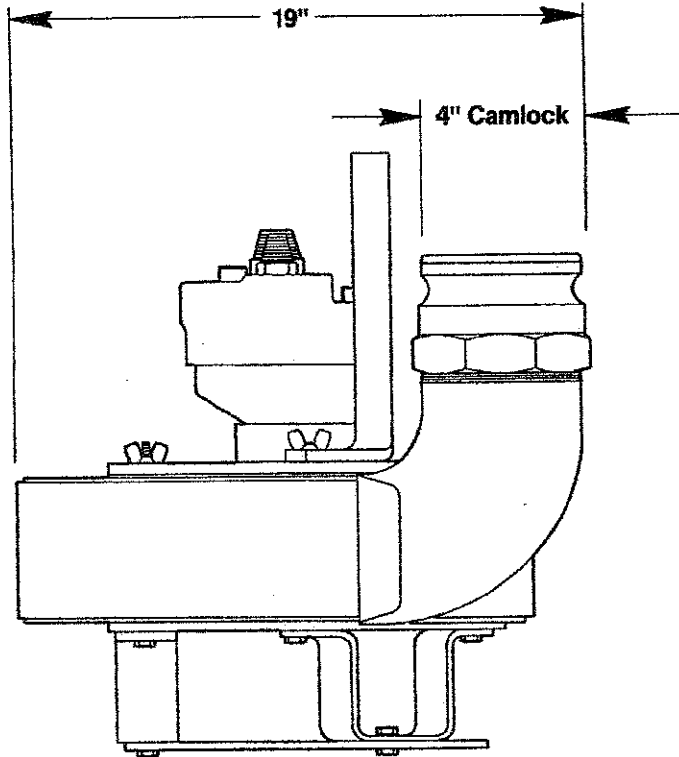
Routine maintenance for the **TP08** is easy. The top cover is attached to the volute with six wing nuts so cleaning and inspection can be accomplished in just a few minutes.

ORDERING INFORMATION

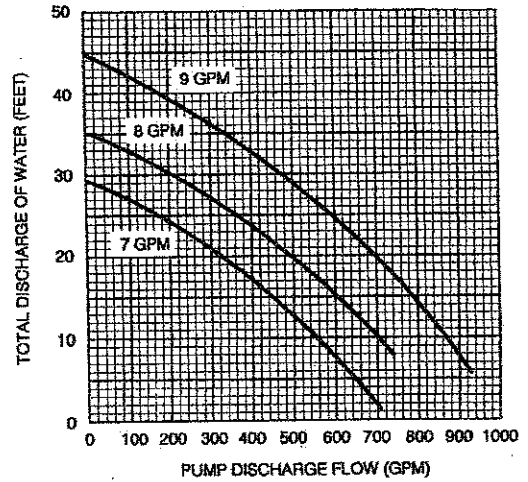
ORDER NO.	DESCRIPTION
TP08013	4 in. Trash Pump, 800 gom/3028 lpm

WARRANTY

Stanley Hydraulic Tools and their associated parts are warranted against defects in materials and workmanship for a period of twelve months from the date of purchase. Stanley Hydraulic Tools reserves the right to repair or replace only those parts which prove to have been defective at the time of purchase. This warranty becomes void if maximum flow and pressure ratings are exceeded.



TP08 PERFORMANCE CHART



All Stanley Hydraulic Tools, Parts, Accessories and allied equipment are subject to design improvements, specification and price changes at any time without notice and with no obligation to units already sold. Weights, dimensions and operating specifications listed herein are subject to change without notice. Where specifications are critical to your application, please consult Stanley Hydraulic Tools.

Call the Stanley Hydraulic Tools dealer nearest you...

**Stanley
Hydraulic Tools**

3810 SE Naef Road
Milwaukie, OR 97267-5698

Tel 503-659-5660
Fax 503-652-1780

STANLEY



Pump

SM21

SPECIFICATIONS



ITEM	U.S.A.	METRIC
CAPACITY	2-1/2 in. Discharge	
PERFORMANCE	300 gpm	1135 lpm
FLOW RANGE	4 - 9 gpm	15 - 34 lpm
PRESSURE	1000 - 2000 psi	70 - 140 bar
PORTS	-6 SAE O-Ring	
WEIGHT	20 lbs	9.1 kg
LENGTH	16 in.	40.6 cm
WIDTH	6-1/4 in.	15.9 cm
CONNECTION	3/8 in. Flush-Face Quick Disconnect Coupler	
HOSE WHIPS	Yes	
MOTOR	Integral	
DISCHARGE SIZE	2-1/2 in. Female Pipe Threads	

Features and Benefits

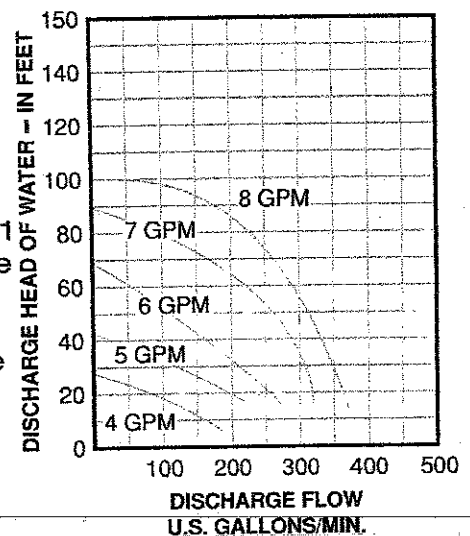
The Stanley SM21 Water Pump is one of the lightest and most durable pumps available. It's capability of pumping 300 gpm (1135 lpm) at a 50 foot head make it ideal for vaults, manholes and more specifically in confined narrow openings.

The SM21 will outpump most all gasoline engine driven pumps. There is no recoil starting, priming or suction hose as with gas engine driven pumps. It can be run

dry without damage.

Submersed into the water and with its easy hookup to a power unit, the SM21 is instantly pumping.

The cast iron impeller of the SM21 is within 3/4 of an inch of the base allowing the pump to remove more liquids than other pumps. With only a few moving parts, the SM21 is virtually maintenance free.



ORDERING INFORMATION

MODEL	PART NO.	DESCRIPTION
SM21	SM2151101	8 gpm (30 lpm) CE, 2-1/2 in. Discharge

ACCESSORIES

PART NO.	DESCRIPTION
02183	Fire Hose, 25 ft x 2-1/2 in. Diameter
02317	Fire Nozzle, 1 in.
05133	Thread Adapter for Pump to fire Hose, 2-1/2 in.
05134	Fire Hose, 50 ft x 2-1/2 in. Diameter
05135	Spanner Wrench for Pin Lug Coupler
29884	2-1/2 in. Combination Nipple (NPT)

WARRANTY

Stanley Hydraulic Tools and their associated parts are warranted against defects in materials and workmanship for a period of twelve months from the date of purchase. Stanley Hydraulic Tools reserves the right to repair or replace only those parts which prove to have been defective at the time of purchase. This warranty becomes void if maximum flow and pressure ratings are exceeded.

All Stanley Hydraulic Tools, parts, accessories and allied equipment are subject to design improvements, specification and price changes at any time without notice and with no obligation to units already sold. Weights, dimensions and operating specifications listed herein are subject to change without notice. Where specifications are critical to your applications, please consult Stanley Hydraulic Tools.

STANLEY

Stanley Hydraulic Tools
 3810 S.E. Naef Road
 Milwaukie, Oregon 97267
 Tel 503 • 659 • 5660
 Fax 503 • 652 • 1780