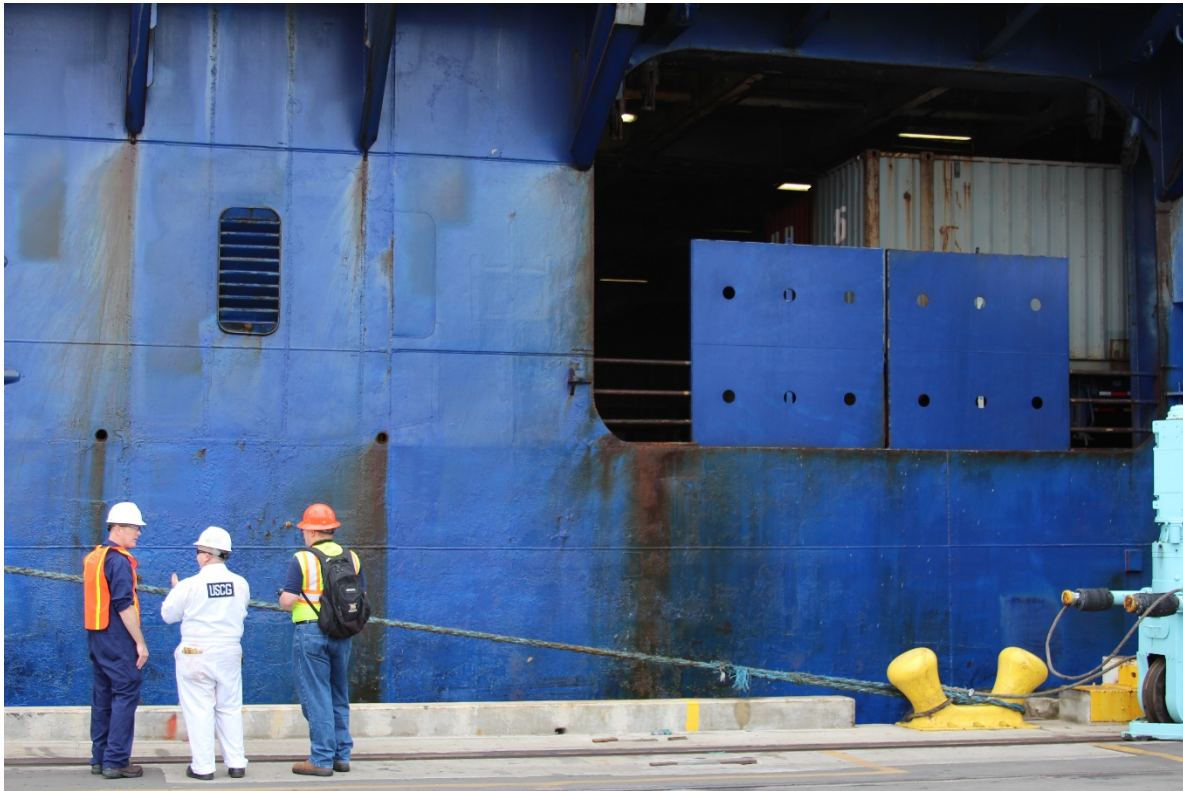


EL Yunque: Hold No. 3 Cargo Space & Vents: 1 December 2015 NavArch NTSB Investigative Group Visit
9/6/2016 E. Stolzenberg, Office of Marine Safety, NTSB

Stbd Side, 3 hold aft Exhaust louvered vent (fr 160, one plated over) & vehicle opening



Stbd Side, 3 hold forward Exhaust louvered vents (two at fr 135)



EL Yunque: Hold No. 3 Cargo Space & Vents: 1 December 2015 NavArch NTSB Investigative Group Visit
9/6/2016 E. Stolzenberg, Office of Marine Safety, NTSB

Stbd Side Inlet Vent blister, frame 142



Scuttle on 2 deck, stbd side, frame 163.5 – access down to No. 3 tween and No. 3 Hold



EL Yunque: Hold No. 3 Cargo Space & Vents: 1 December 2015 NavArch NTSB Investigative Group Visit
9/6/2016 E. Stolzenberg, Office of Marine Safety, NTSB

2nd Deck, Stbd Side, Emergency Fire Pump No. 3 Hold Controller and reach-rod operator



3rd Deck, Stbd Side, No. 3 Tween, ladder up to 2nd Deck and down to No. 3 hold. Door to storage space.



EL Yunque: Hold No. 3 Cargo Space & Vents: 1 December 2015 NavArch NTSB Investigative Group Visit
9/6/2016 E. Stolzenberg, Office of Marine Safety, NTSB

3 Tween, Stbd Side, Inlets to Exhaust Vents, Ladder up 2nd Deck Scuttle and No. 3 hold



3 Tween, Stbd Side, 3rd Deck (x-holes in deck), ladder down to No. 3 hold



EL Yunque: Hold No. 3 Cargo Space & Vents: 1 December 2015 NavArch NTSB Investigative Group Visit
9/6/2016 E. Stolzenberg, Office of Marine Safety, NTSB

No. 3 Hold, view from Stbd Aft Corner near Overhead (on ladder) looking fwd



No. 3 Hold, view from Stbd Aft Corner above Emergency Fire pump system (looking Port and aft)



EL Yunque: Hold No. 3 Cargo Space & Vents: 1 December 2015 NavArch NTSB Investigative Group Visit
9/6/2016 E. Stolzenberg, Office of Marine Safety, NTSB

No. 3 Hold, view from Stbd Aft Corner looking Port and Aft at Emergency Fire pump system



No. 3 Hold, view of rosebox cover and bilge alarm sensor, looking aft



EL Yunque: Hold No. 3 Cargo Space & Vents: 1 December 2015 NavArch NTSB Investigative Group Visit
9/6/2016 E. Stolzenberg, Office of Marine Safety, NTSB

No. 3 Hold, bilge suction rosebox (aft, port side of No. 3 Hold, opposite hand stbd near E-fire pump)



No. 3 Hold, view from Stbd Aft Corner looking Fwd along stbd side, escape ladder and inlet vent ducts



EL Yunque: Hold No. 3 Cargo Space & Vents: 1 December 2015 NavArch NTSB Investigative Group Visit
9/6/2016 E. Stolzenberg, Office of Marine Safety, NTSB

No. 3 Hold, view from center of hold looking Stbd and Aft at inlet vents, Ladder and E-Fire pump area



No. 3 Hold, view from fwd stbd corner looking aft (inlet ventilation ducts)



EL Yunque: Hold No. 3 Cargo Space & Vents: 1 December 2015 NavArch NTSB Investigative Group Visit
9/6/2016 E. Stolzenberg, Office of Marine Safety, NTSB

No. 3 Hold, view from center looking Stbd at inlet ventilation ducting



EL Yunque: Hold No. 3 Cargo Space & Vents: 1 December 2015 NavArch NTSB Investigative Group Visit
9/6/2016 E. Stolzenberg, Office of Marine Safety, NTSB

No. 3 Hold, view from center looking Stbd at inlet ventilation ducting (close-up)



EL Yunque: Hold No. 3 Cargo Space & Vents: 1 December 2015 NavArch NTSB Investigative Group Visit
9/6/2016 E. Stolzenberg, Office of Marine Safety, NTSB

No. 3 Hold, view from stbd fwd, looking aft and port



No. 3 Hold, view from center, looking port, of Port Side inlet ventilation ducting



EL Yunque: Hold No. 3 Cargo Space & Vents: 1 December 2015 NavArch NTSB Investigative Group Visit
9/6/2016 E. Stolzenberg, Office of Marine Safety, NTSB

No. 3 Hold, view from center, looking fwd to WT door to No. 2A Hold (4C)



No. 3 Hold, view from center, looking fwd at port fwd corner of hold

