

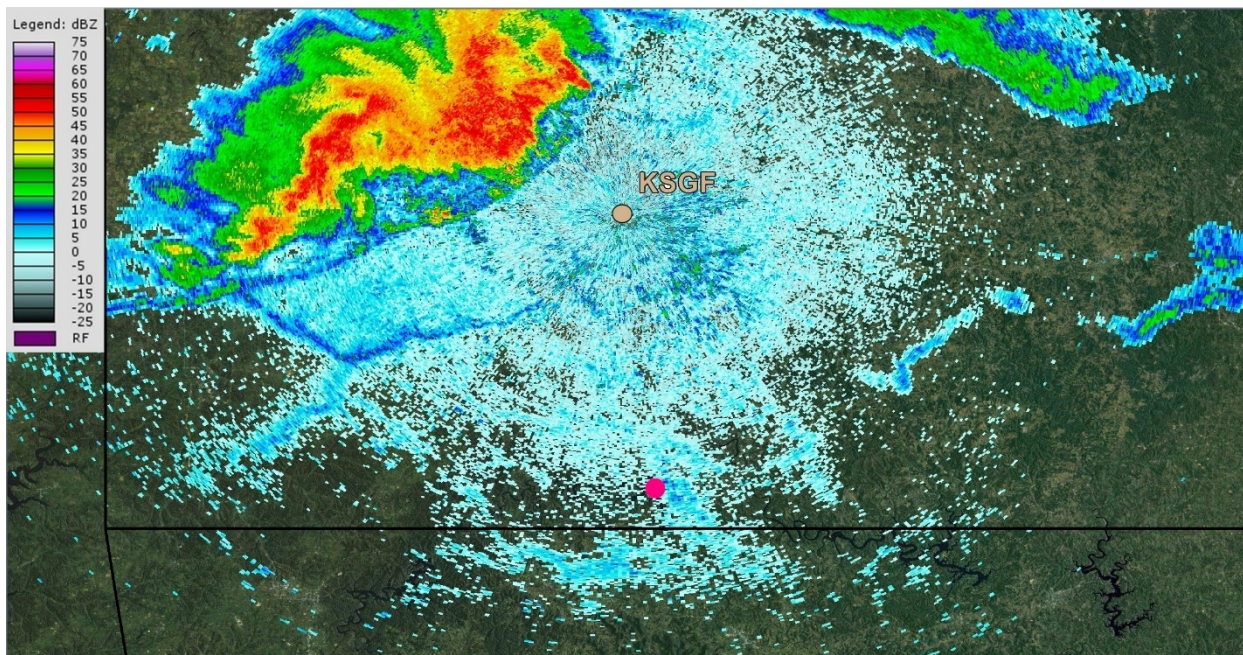
## **Factual Report – Attachment 2**

All KSGF WSR-88D Level-II  $\sim 0.5^\circ$  tilt base reflectivity and Level-III  $\sim 0.5^\circ$  tilt base velocity imagery for the period 1801 through 1914 CDT.

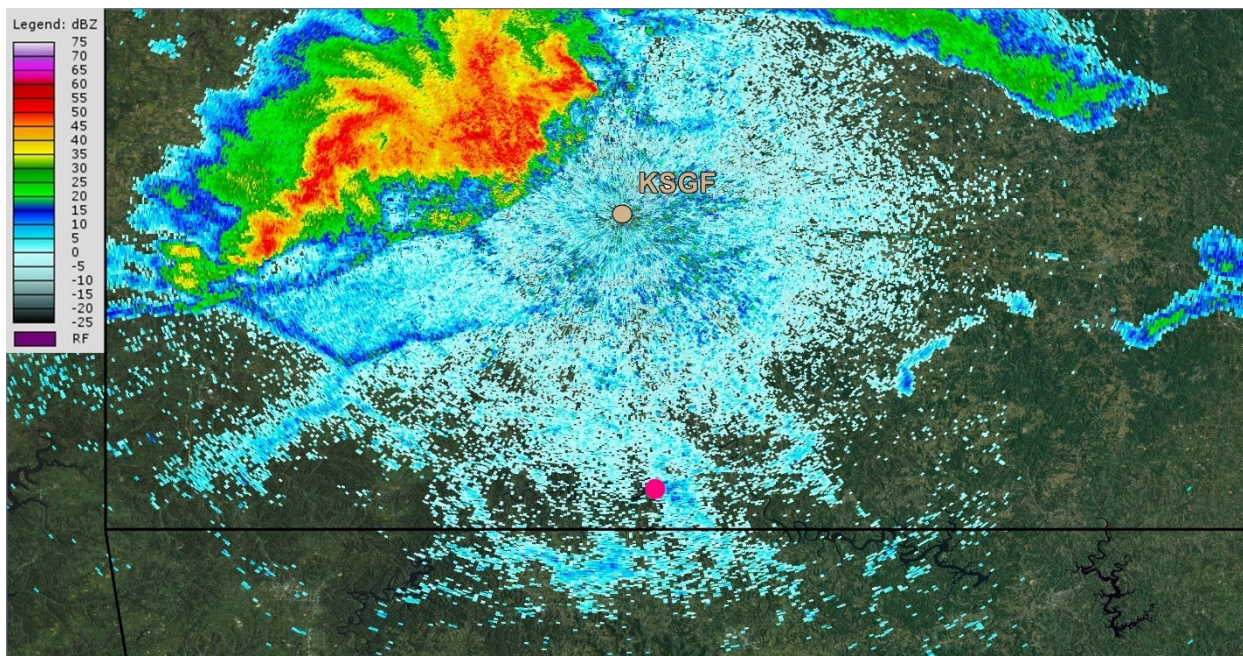
# **METEOROLOGY**

DCA18MM028

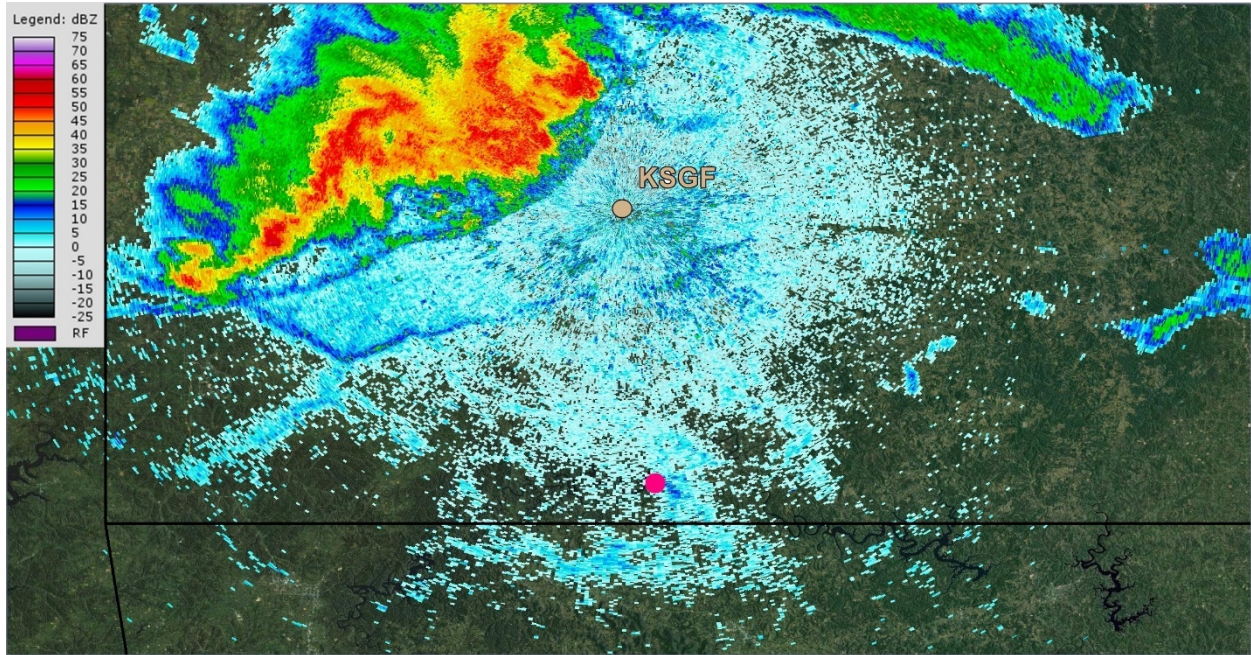
*Submitted by: Mike Richards  
NTSB, AS-30*



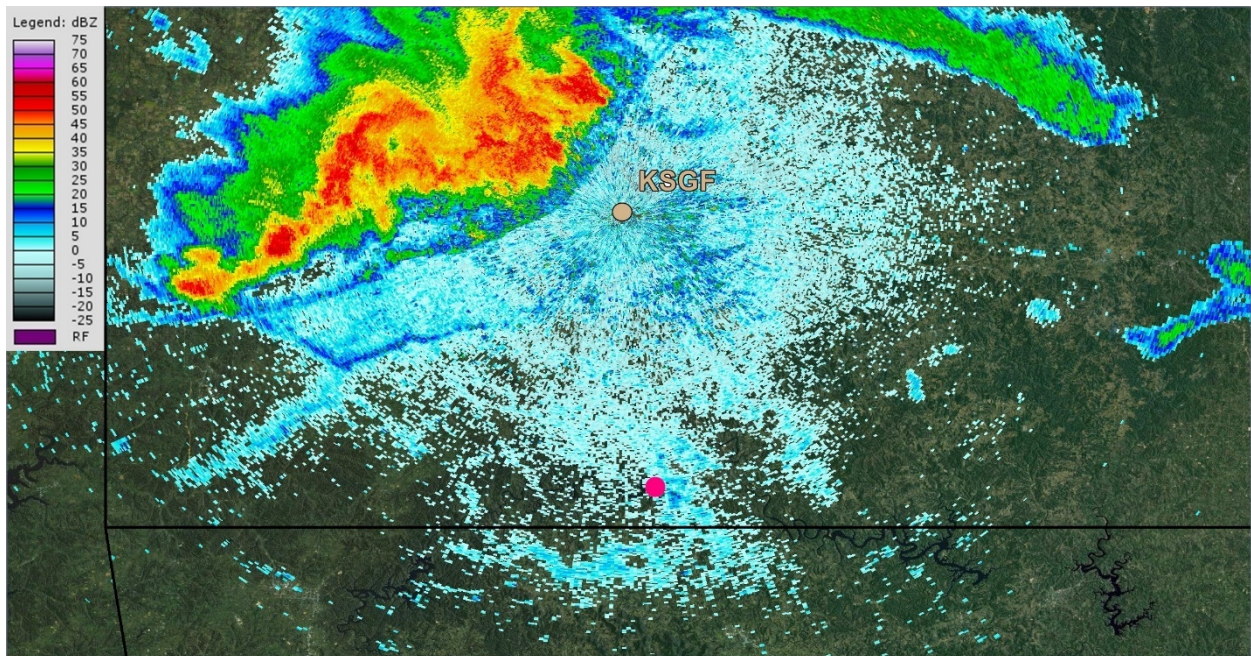
**Figure A** – KSGF Level-II  $\sim 0.5^\circ$  base reflectivity image from a sweep initiated about 1801:47 CDT. Accident site is denoted by the pink circle.



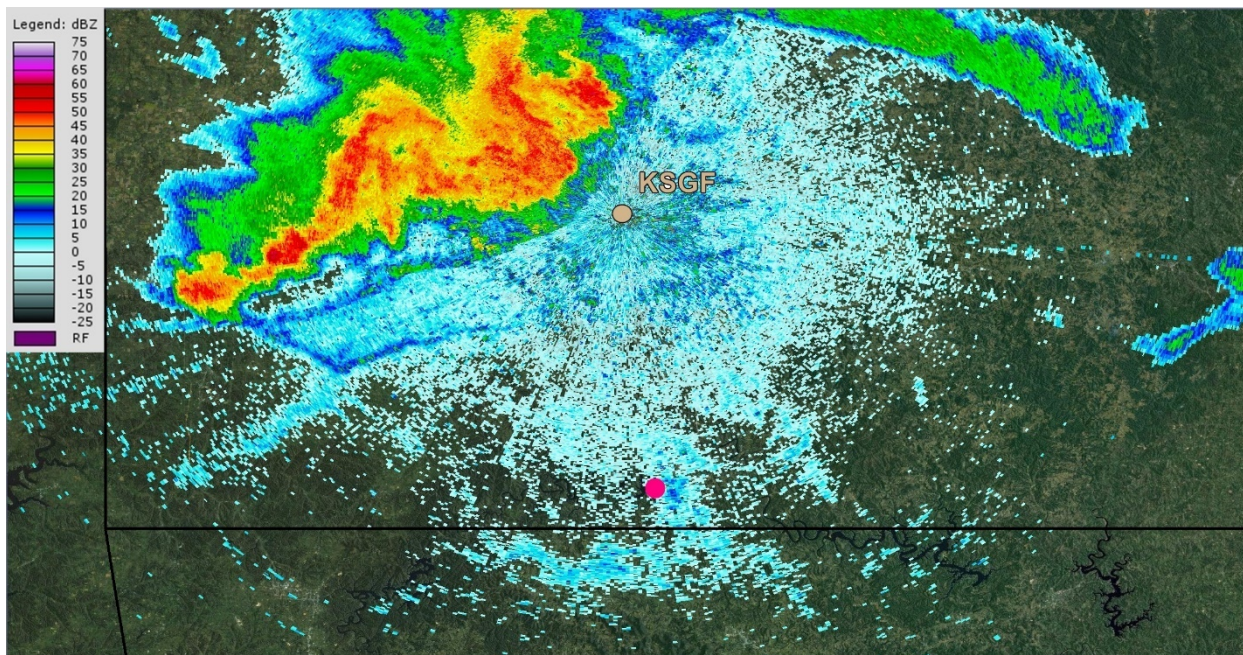
**Figure B** – KSGF Level-II  $\sim 0.5^\circ$  base reflectivity image from a sweep initiated about 1803:22 CDT. Accident site is denoted by the pink circle.



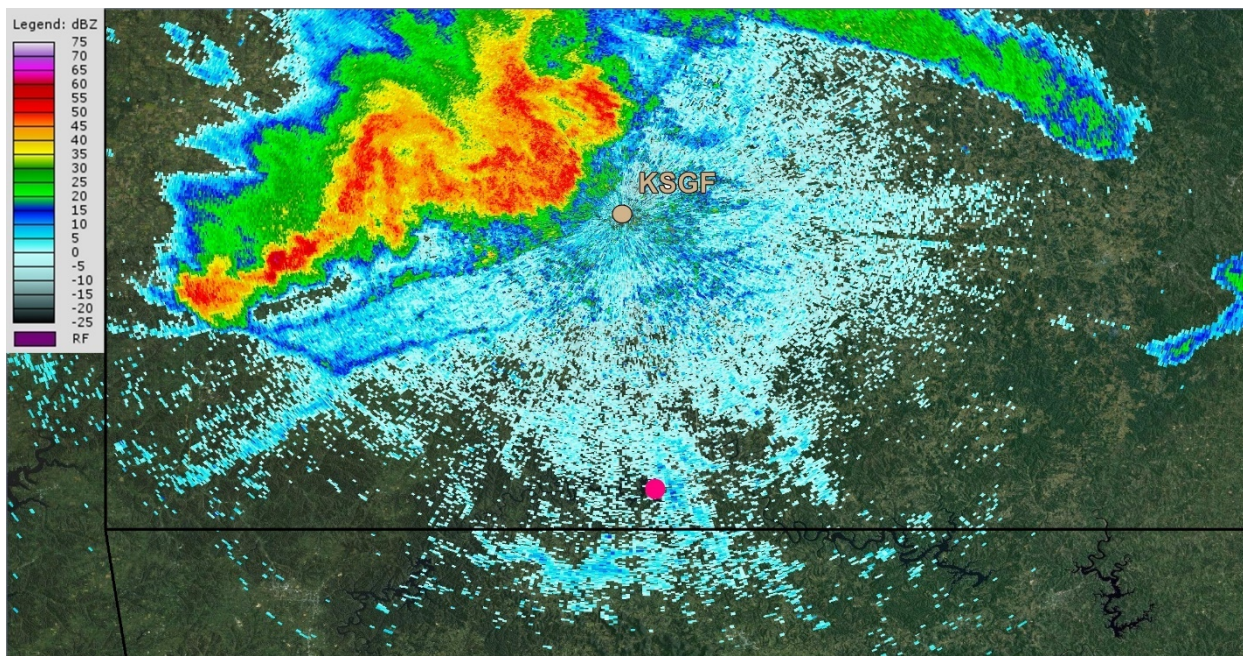
**Figure C** – KSGF Level-II  $\sim 0.5^\circ$  base reflectivity image from a sweep initiated about 1805:24 CDT. Accident site is denoted by the pink circle.



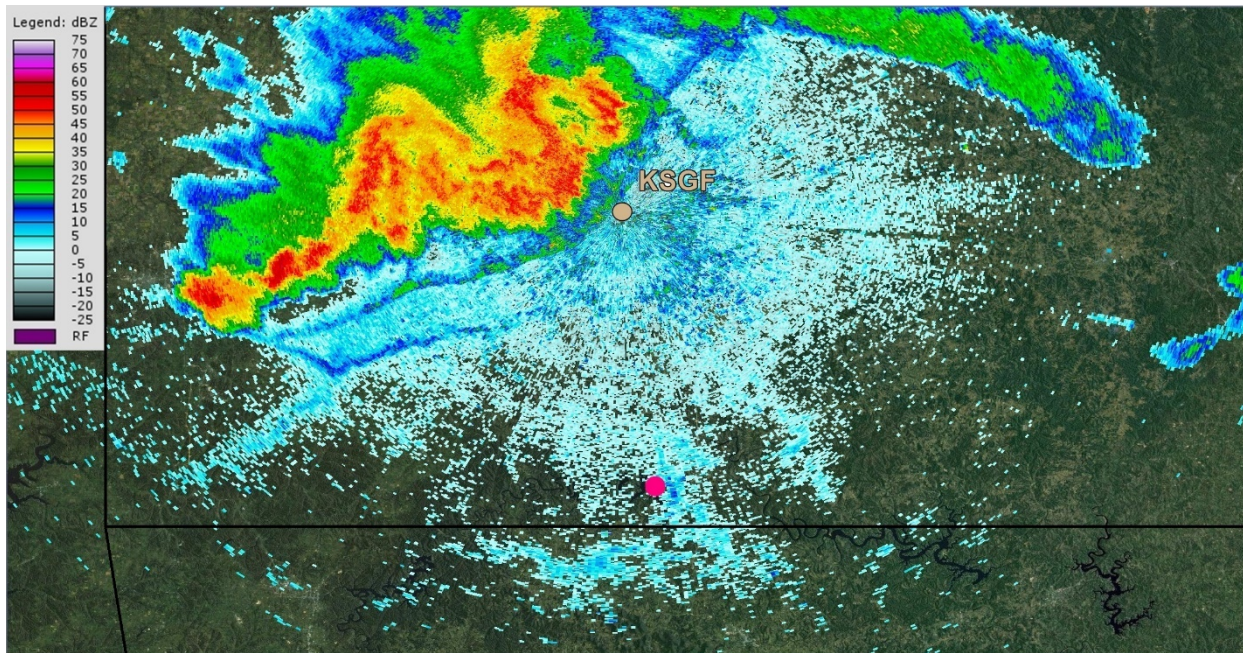
**Figure D** – KSGF Level-II  $\sim 0.5^\circ$  base reflectivity image from a sweep initiated about 1807:10 CDT. Accident site is denoted by the pink circle.



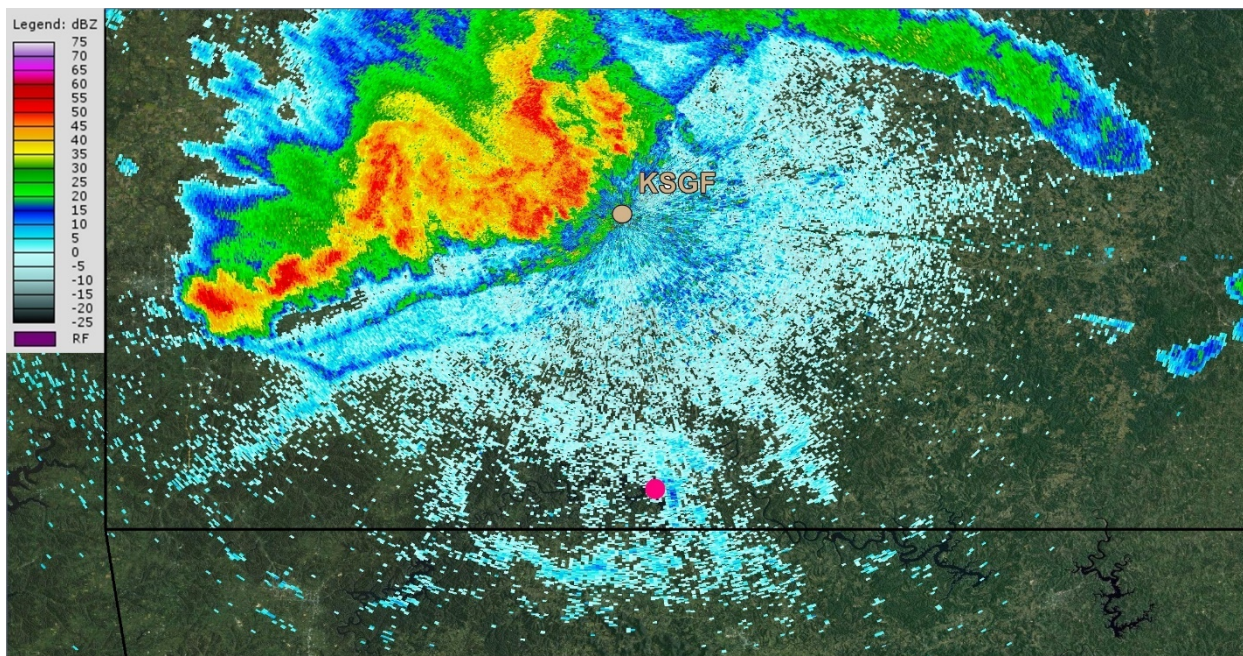
**Figure E** – KSGF Level-II  $\sim 0.5^\circ$  base reflectivity image from a sweep initiated about 1809:15 CDT. Accident site is denoted by the pink circle.



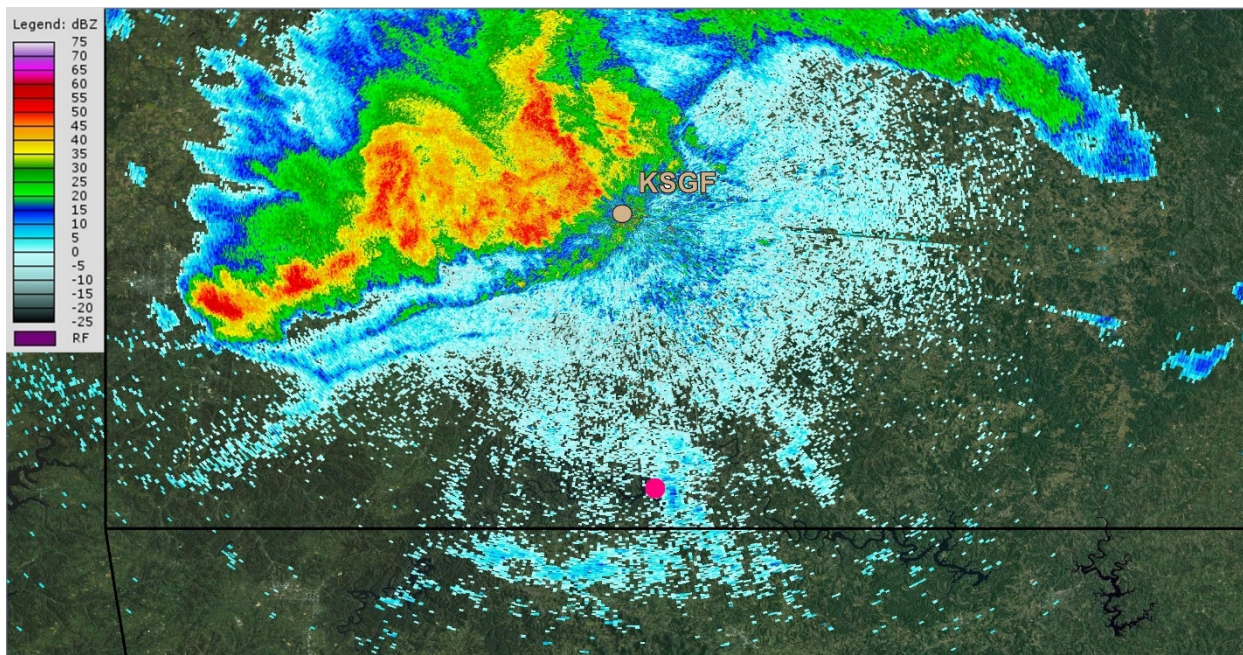
**Figure F** – KSGF Level-II  $\sim 0.5^\circ$  base reflectivity image from a sweep initiated about 1810:50 CDT. Accident site is denoted by the pink circle.



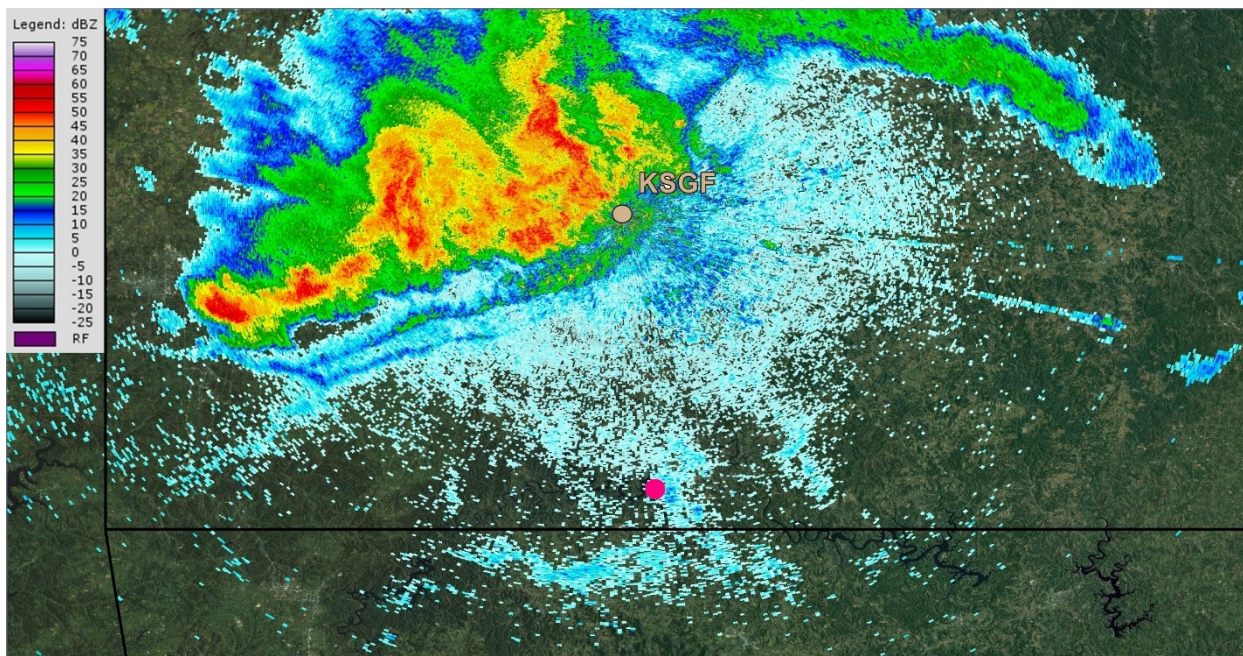
**Figure G** – KSGF Level-II  $\sim 0.5^\circ$  base reflectivity image from a sweep initiated about 1812:52 CDT. Accident site is denoted by the pink circle.



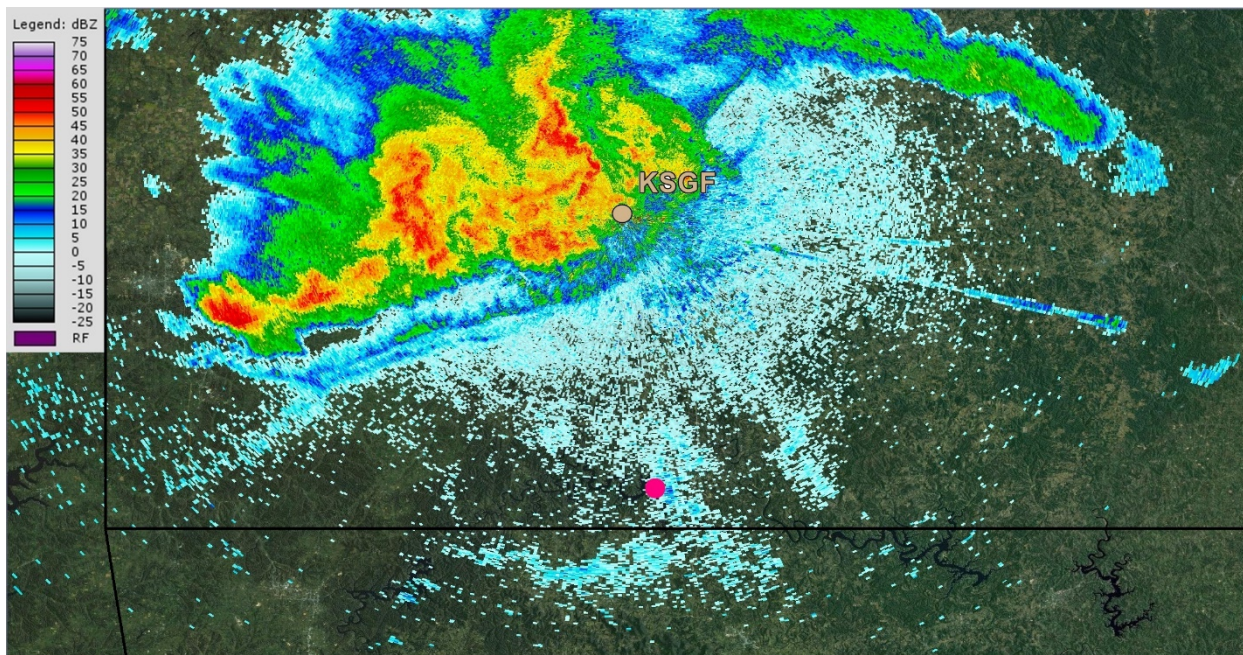
**Figure H** – KSGF Level-II  $\sim 0.5^\circ$  base reflectivity image from a sweep initiated about 1814:38 CDT. Accident site is denoted by the pink circle.



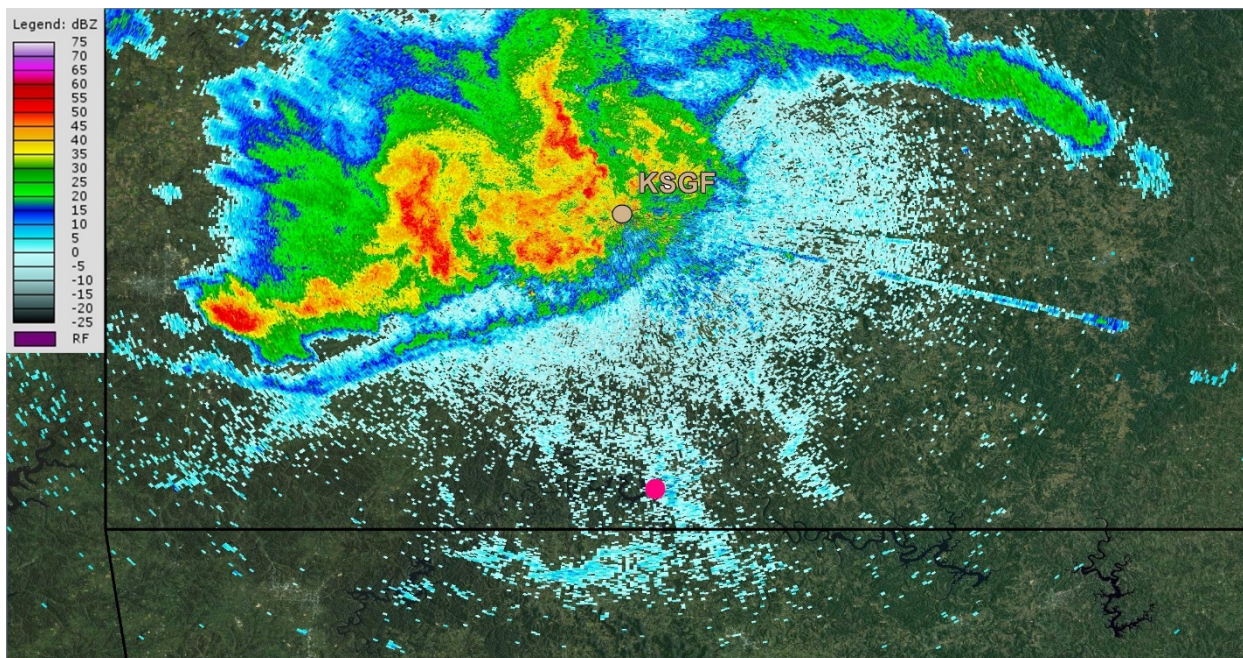
**Figure I** – KSGF Level-II ~0.5° base reflectivity image from a sweep initiated about 1816:43 CDT. Accident site is denoted by the pink circle.



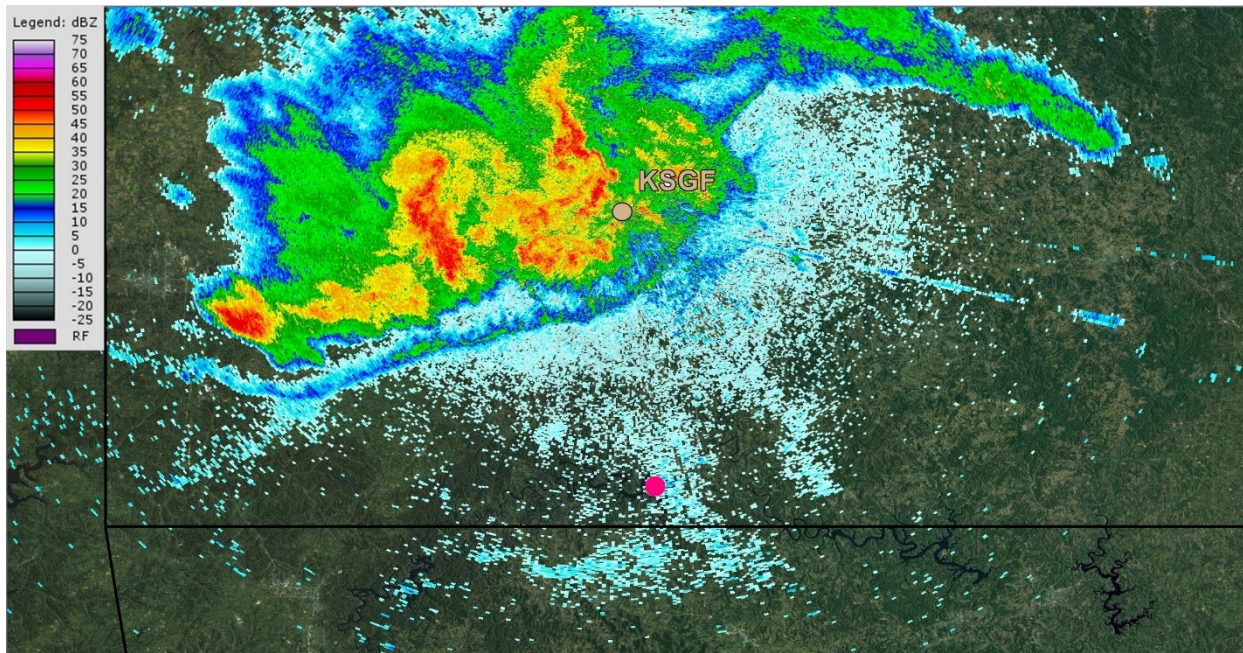
**Figure J** – KSGF Level-II ~0.5° base reflectivity image from a sweep initiated about 1818:17 CDT. Accident site is denoted by the pink circle.



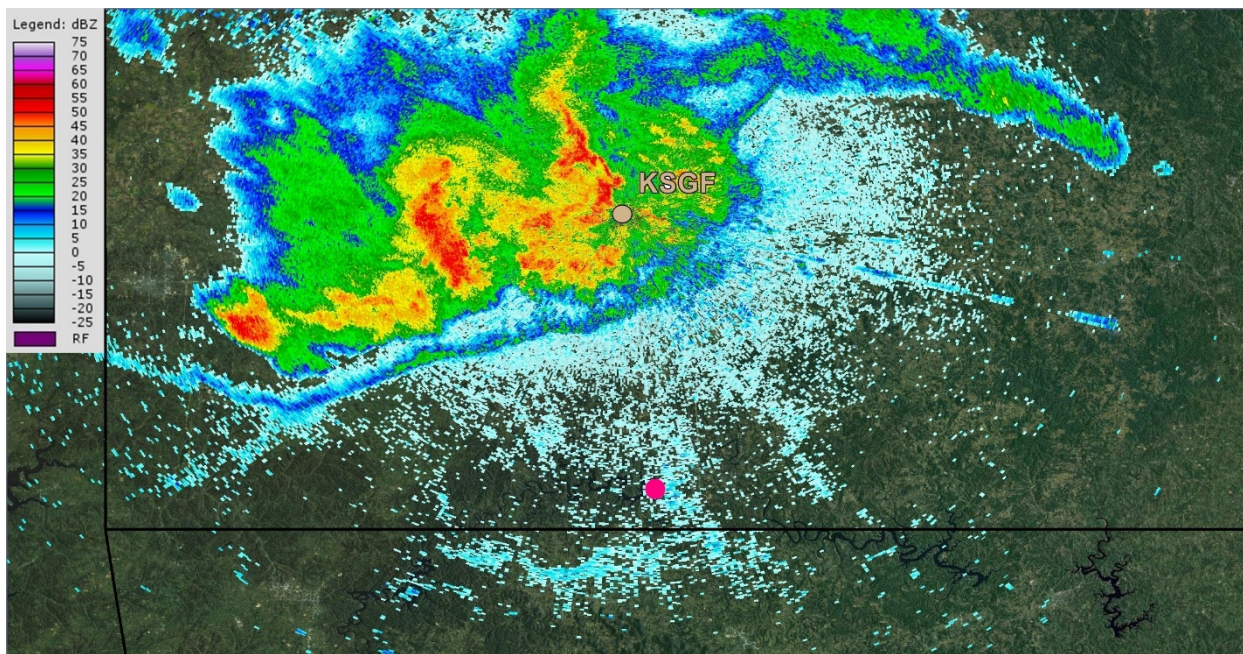
**Figure K** – KSGF Level-II  $\sim 0.5^\circ$  base reflectivity image from a sweep initiated about 1820:19 CDT. Accident site is denoted by the pink circle.



**Figure L** – KSGF Level-II  $\sim 0.5^\circ$  base reflectivity image from a sweep initiated about 1822:05 CDT. Accident site is denoted by the pink circle.

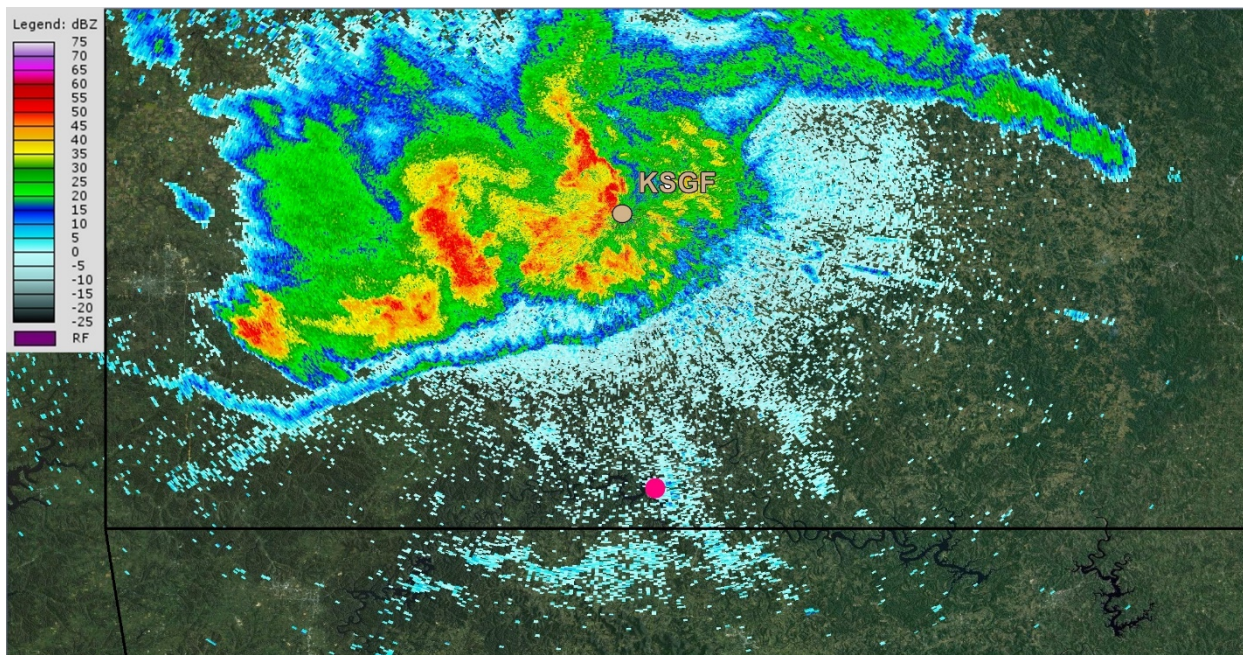


**Figure M** – KSGF Level-II  $\sim 0.5^\circ$  base reflectivity image from a sweep initiated about 1824:08 CDT. Accident site is denoted by the pink circle.

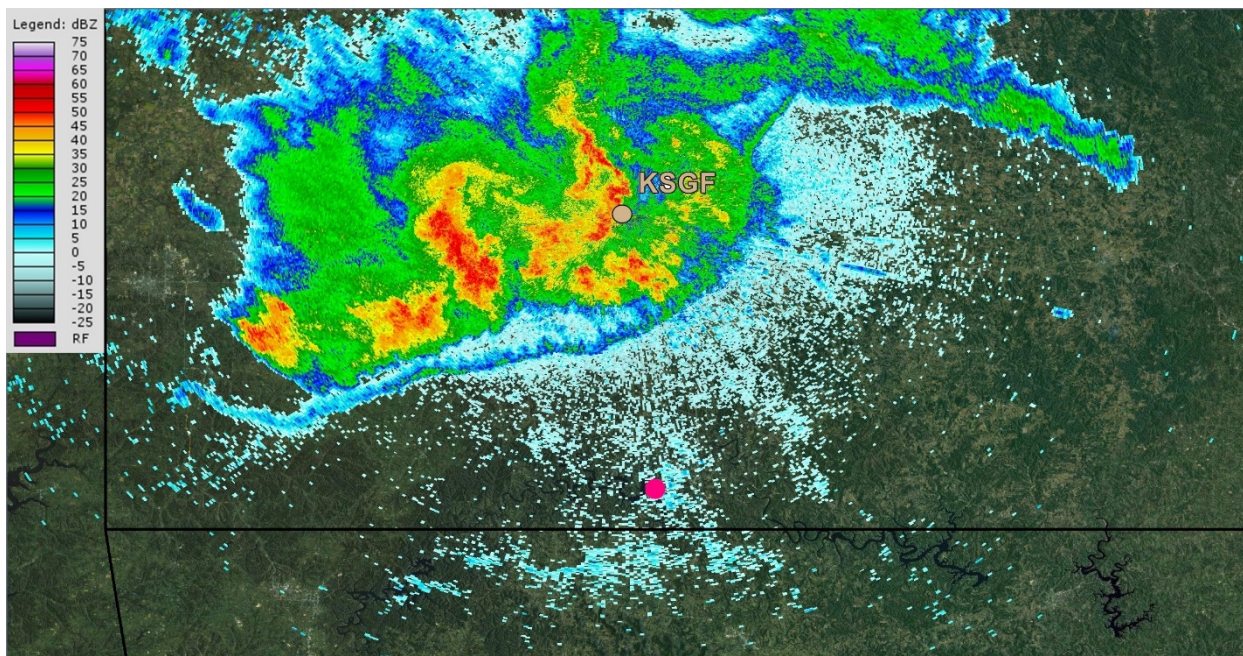


**Figure N** – KSGF Level-II  $\sim 0.5^\circ$  base reflectivity image from a sweep initiated about 1825:43 CDT. Accident site is denoted by the pink circle.

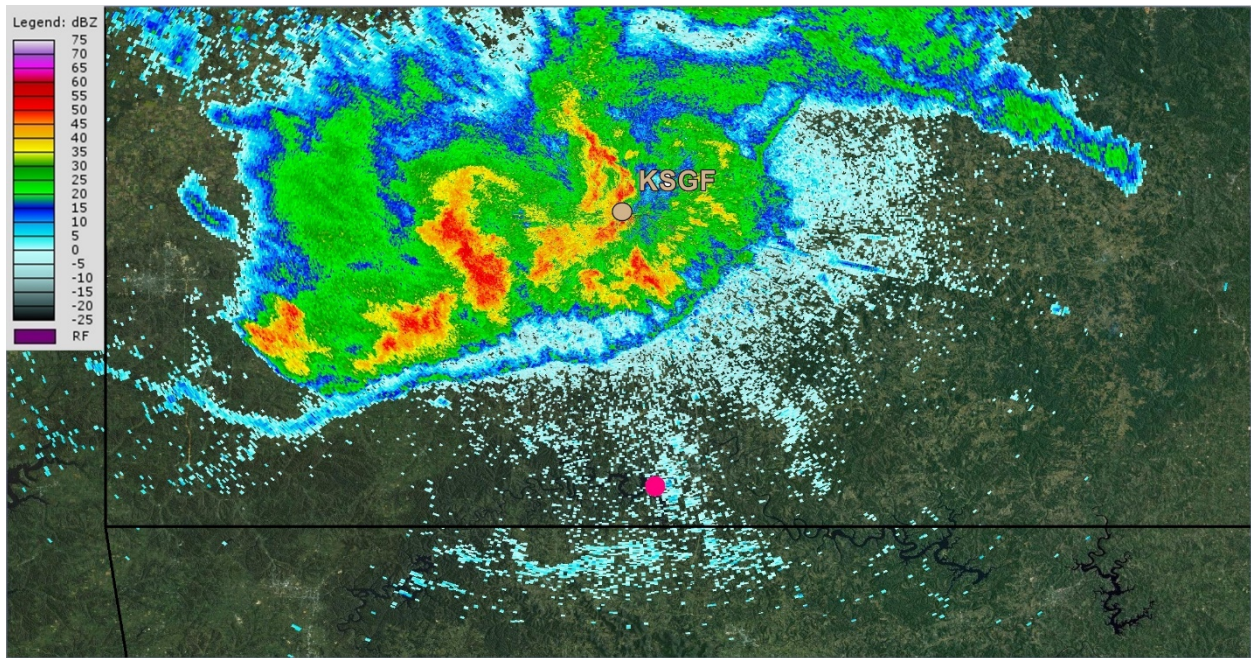




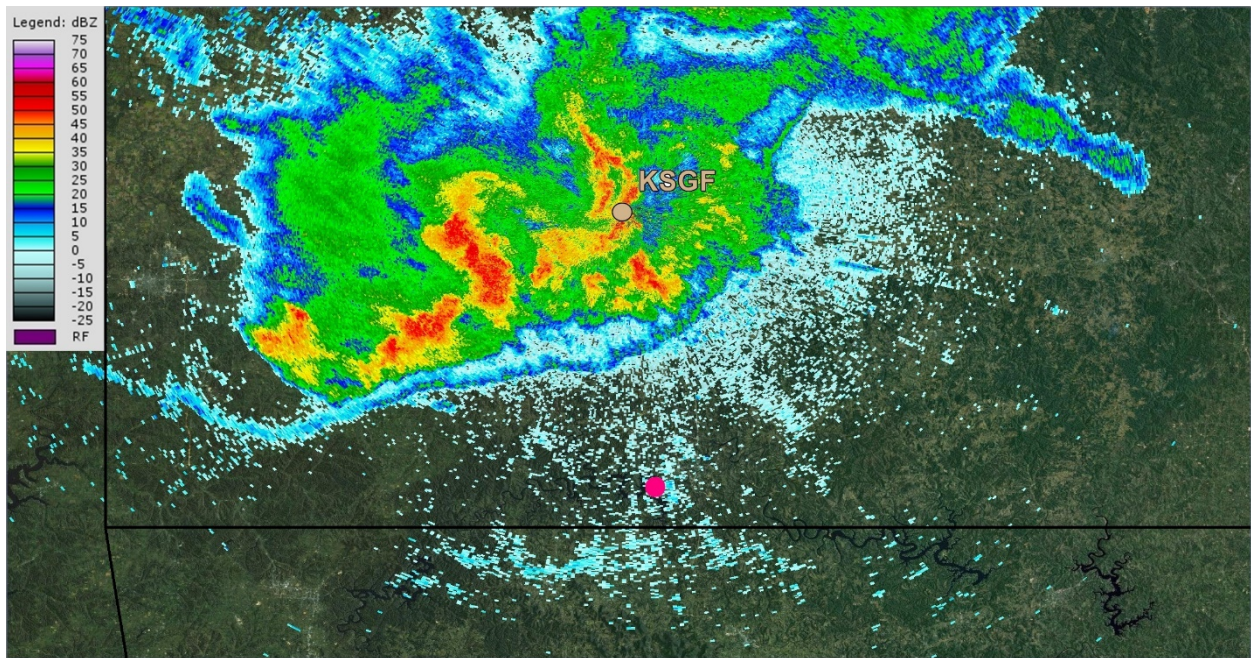
**Figure O** – KSGF Level-II  $\sim 0.5^\circ$  base reflectivity image from a sweep initiated about 1827:45 CDT. Accident site is denoted by the pink circle.



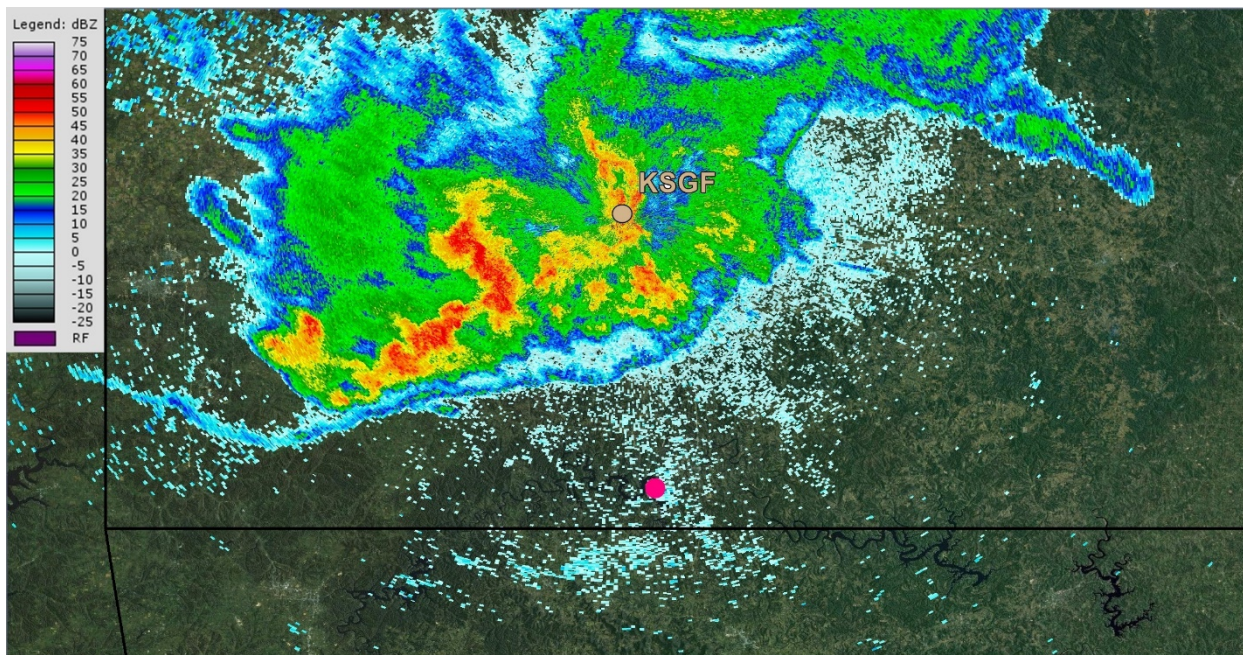
**Figure P** – KSGF Level-II  $\sim 0.5^\circ$  base reflectivity image from a sweep initiated about 1829:31 CDT. Accident site is denoted by the pink circle.



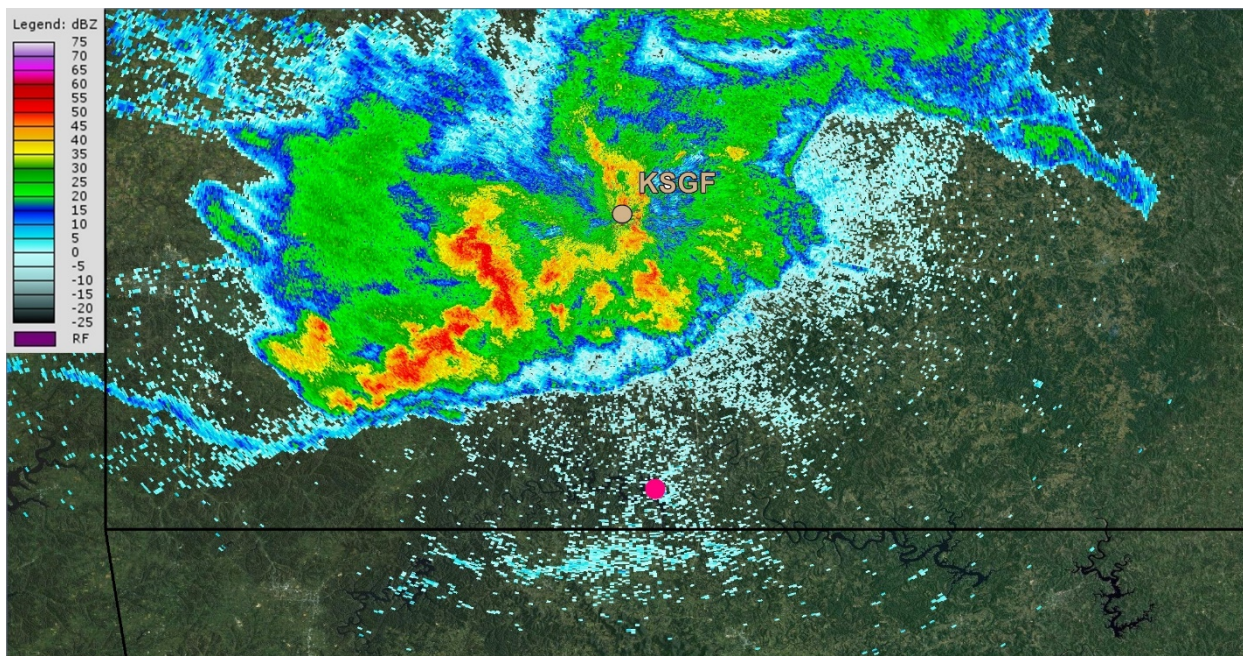
**Figure Q** – KSGF Level-II  $\sim 0.5^\circ$  base reflectivity image from a sweep initiated about 1803:34 CDT. Accident site is denoted by the pink circle.



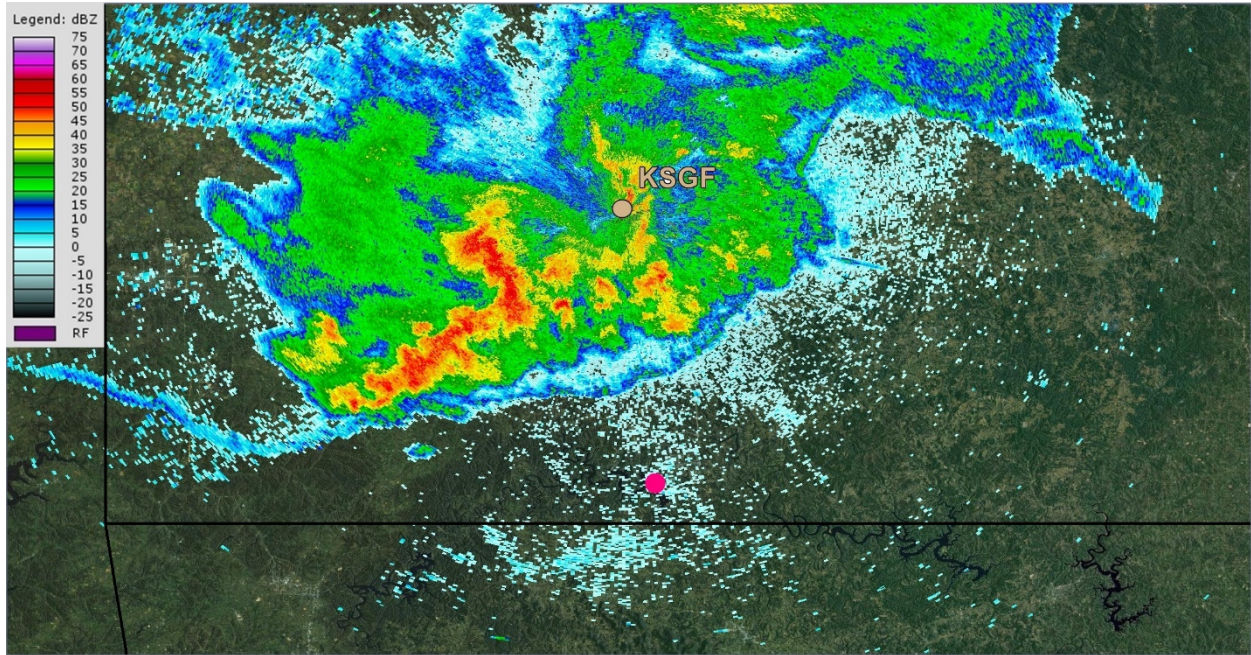
**Figure R** – KSGF Level-II  $\sim 0.5^\circ$  base reflectivity image from a sweep initiated about 1833:09 CDT. Accident site is denoted by the pink circle.



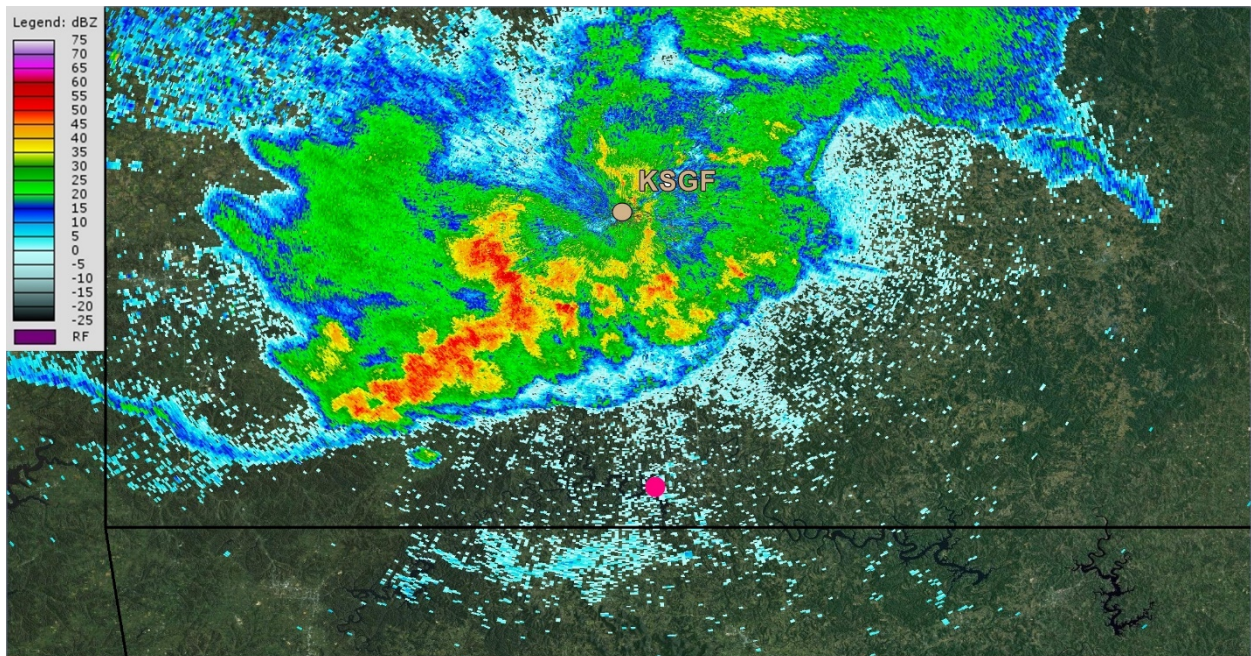
**Figure S** – KSGF Level-II  $\sim 0.5^\circ$  base reflectivity image from a sweep initiated about 1835:11 CDT. Accident site is denoted by the pink circle.



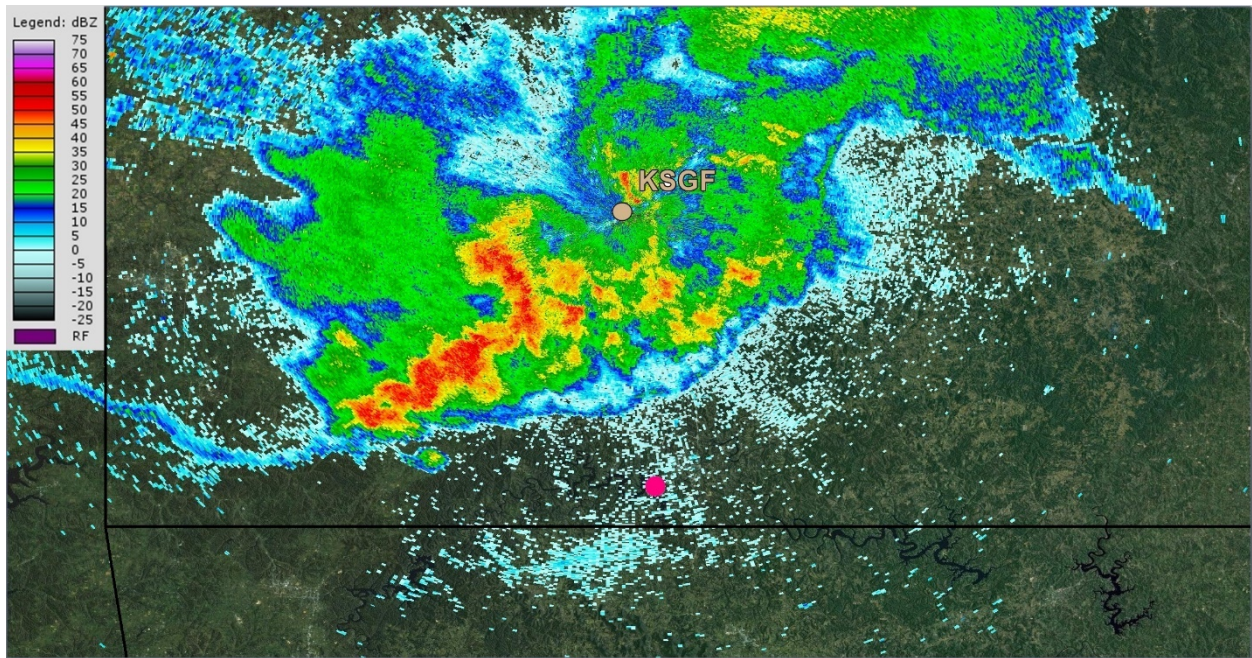
**Figure T** – KSGF Level-II  $\sim 0.5^\circ$  base reflectivity image from a sweep initiated about 1836:57 CDT. Accident site is denoted by the pink circle.



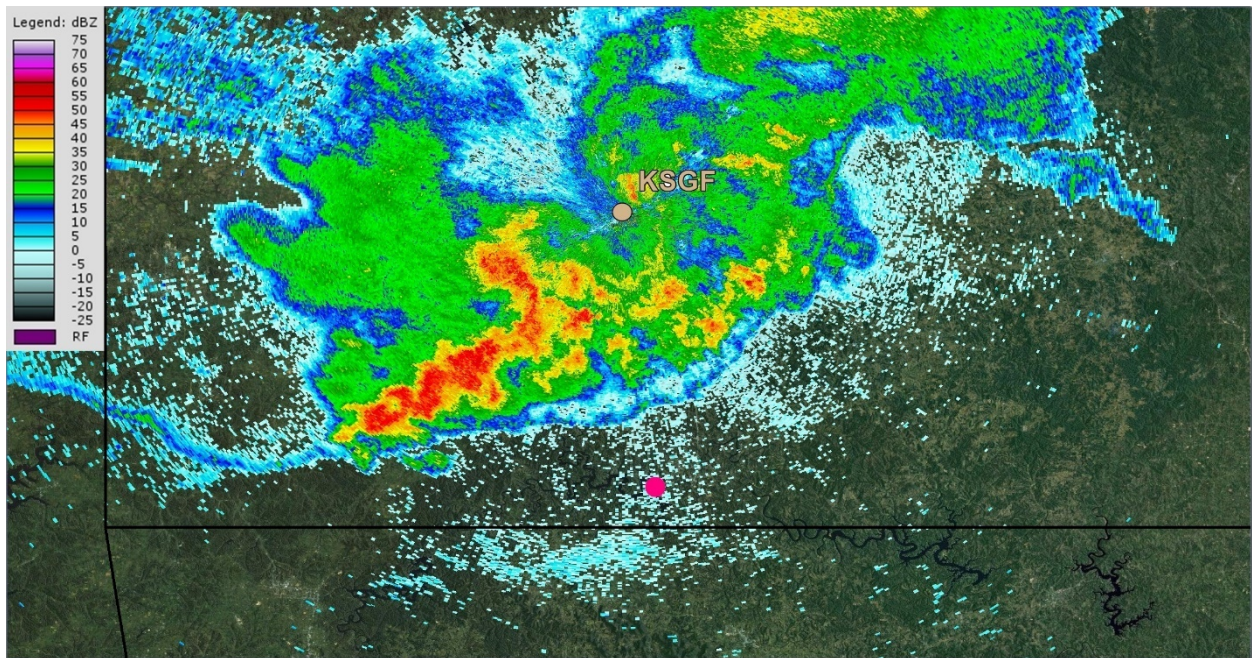
**Figure U** – KSGF Level-II  $\sim 0.5^\circ$  base reflectivity image from a sweep initiated about 1839:00 CDT. Accident site is denoted by the pink circle.



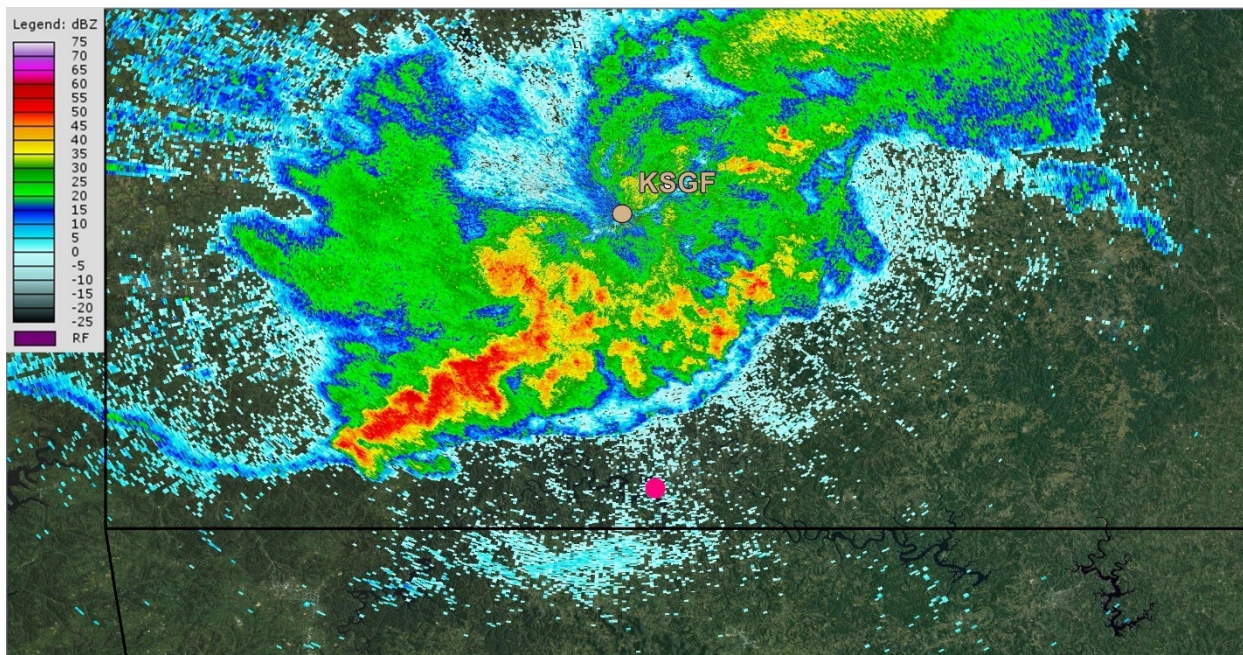
**Figure V** – KSGF Level-II  $\sim 0.5^\circ$  base reflectivity image from a sweep initiated about 1840:35 CDT. Accident site is denoted by the pink circle.



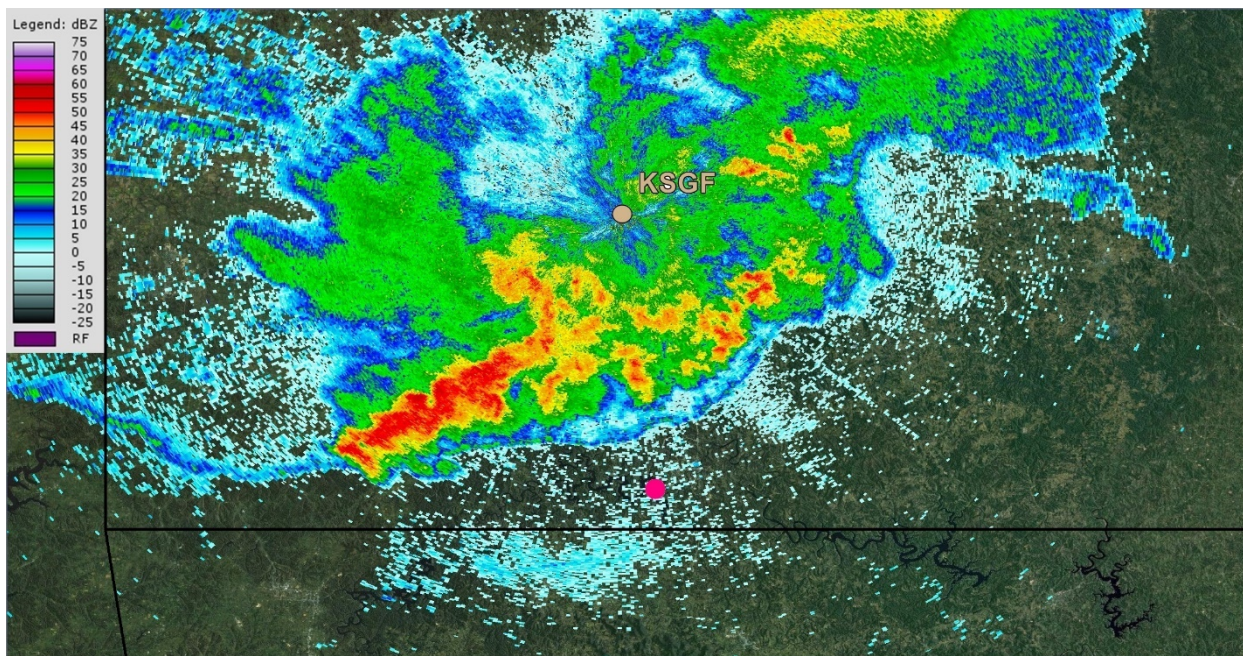
**Figure W** – KSGF Level-II  $\sim 0.5^\circ$  base reflectivity image from a sweep initiated about 1842:37 CDT. Accident site is denoted by the pink circle.



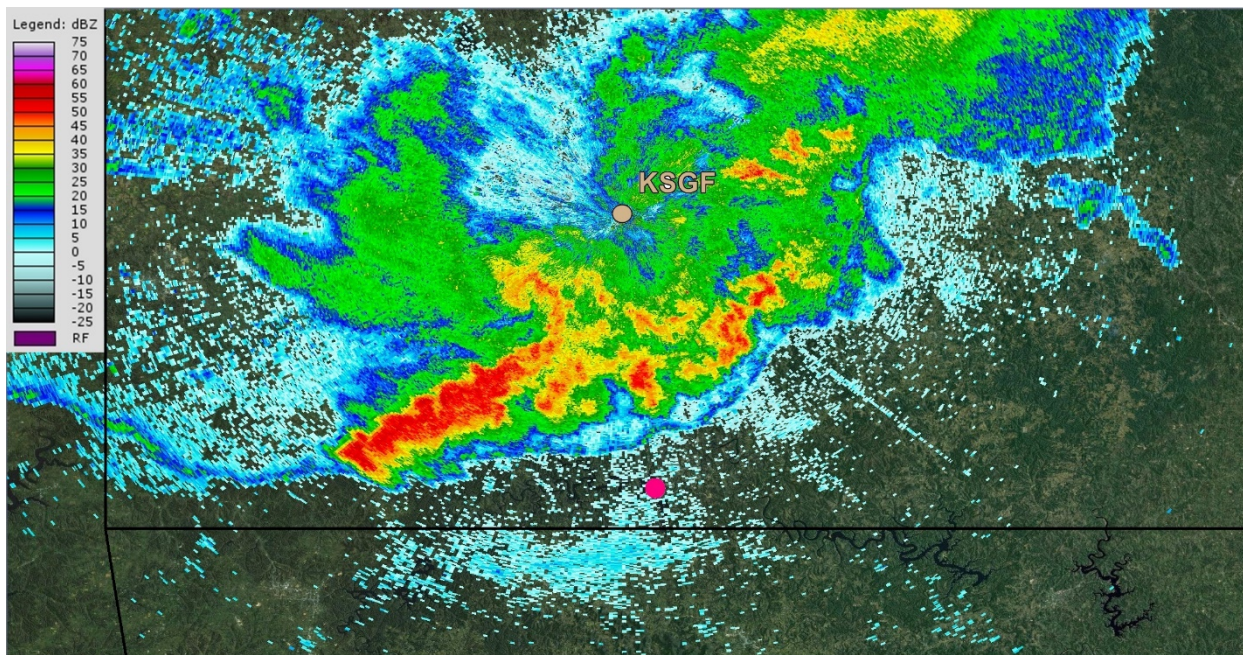
**Figure X** – KSGF Level-II  $\sim 0.5^\circ$  base reflectivity image from a sweep initiated about 1844:23 CDT. Accident site is denoted by the pink circle.



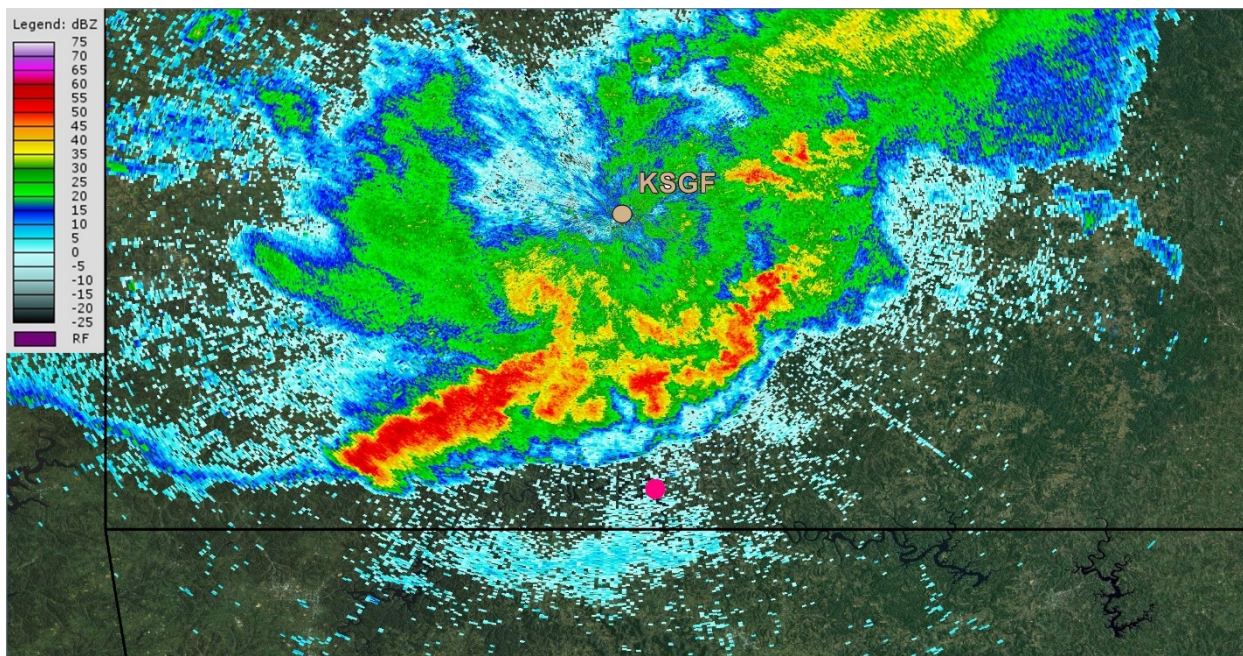
**Figure Y** – KSGF Level-II  $\sim 0.5^\circ$  base reflectivity image from a sweep initiated about 1846:27 CDT. Accident site is denoted by the pink circle.



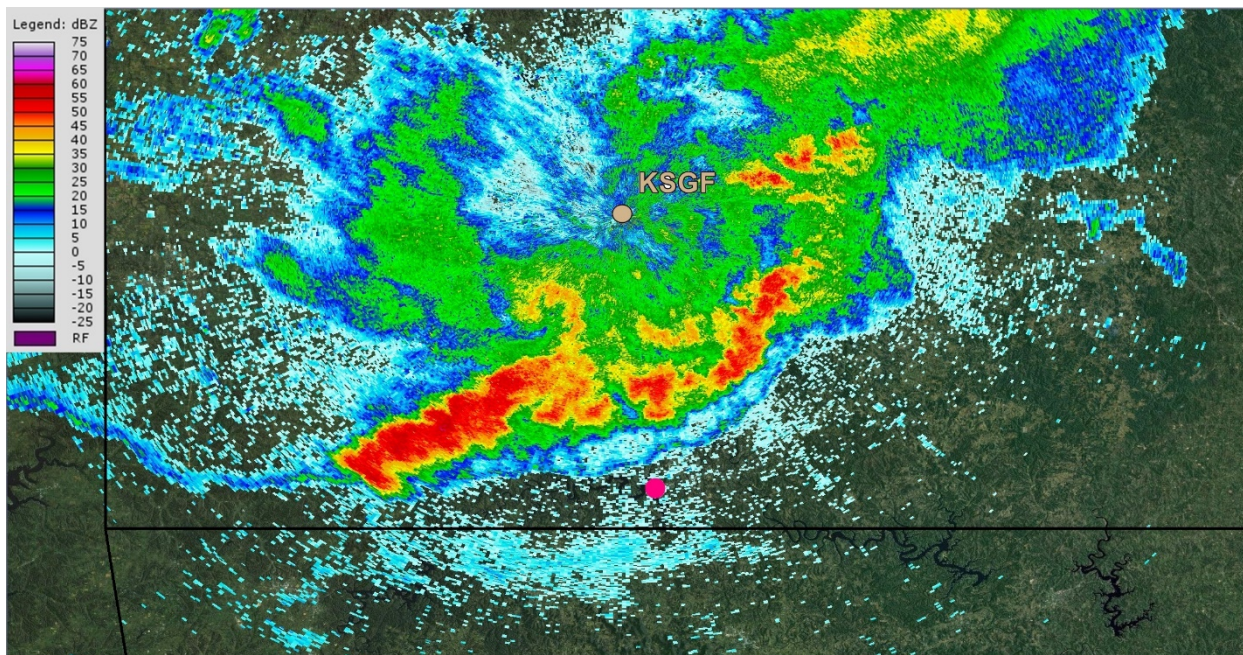
**Figure Z** – KSGF Level-II  $\sim 0.5^\circ$  base reflectivity image from a sweep initiated about 1848:02 CDT. Accident site is denoted by the pink circle.



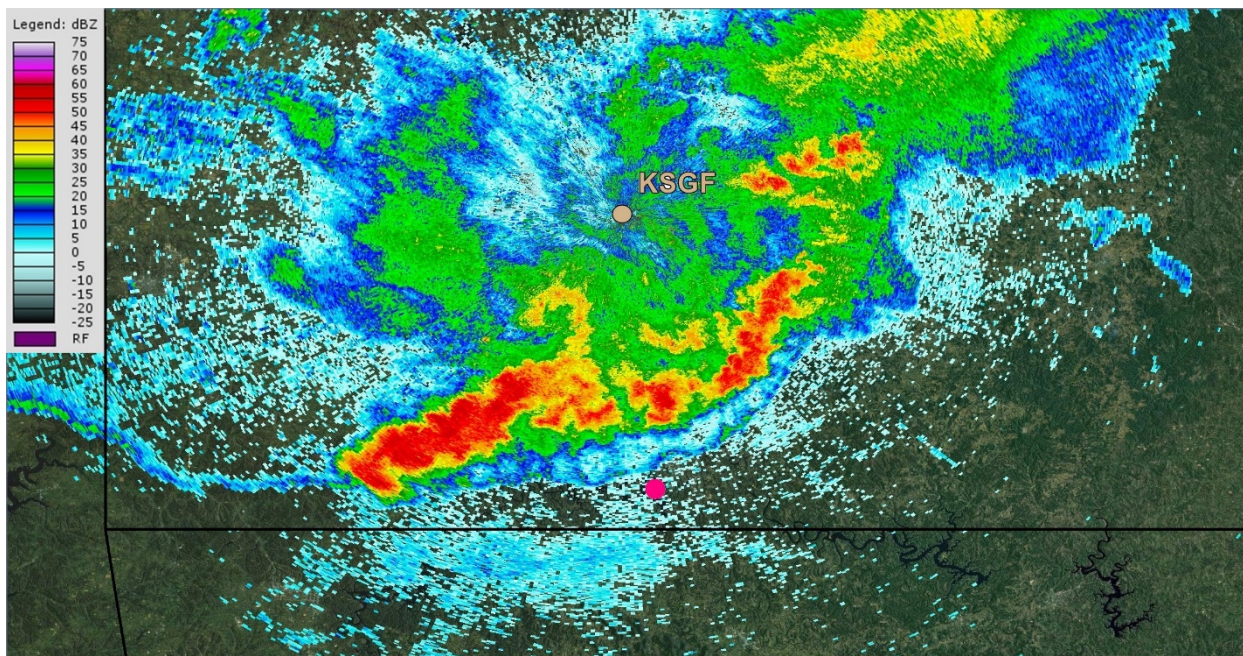
**Figure AA** – KSGF Level-II  $\sim 0.5^\circ$  base reflectivity image from a sweep initiated about 1850:04 CDT. Accident site is denoted by the pink circle.



**Figure AB** – KSGF Level-II  $\sim 0.5^\circ$  base reflectivity image from a sweep initiated about 1851:50 CDT. Accident site is denoted by the pink circle.

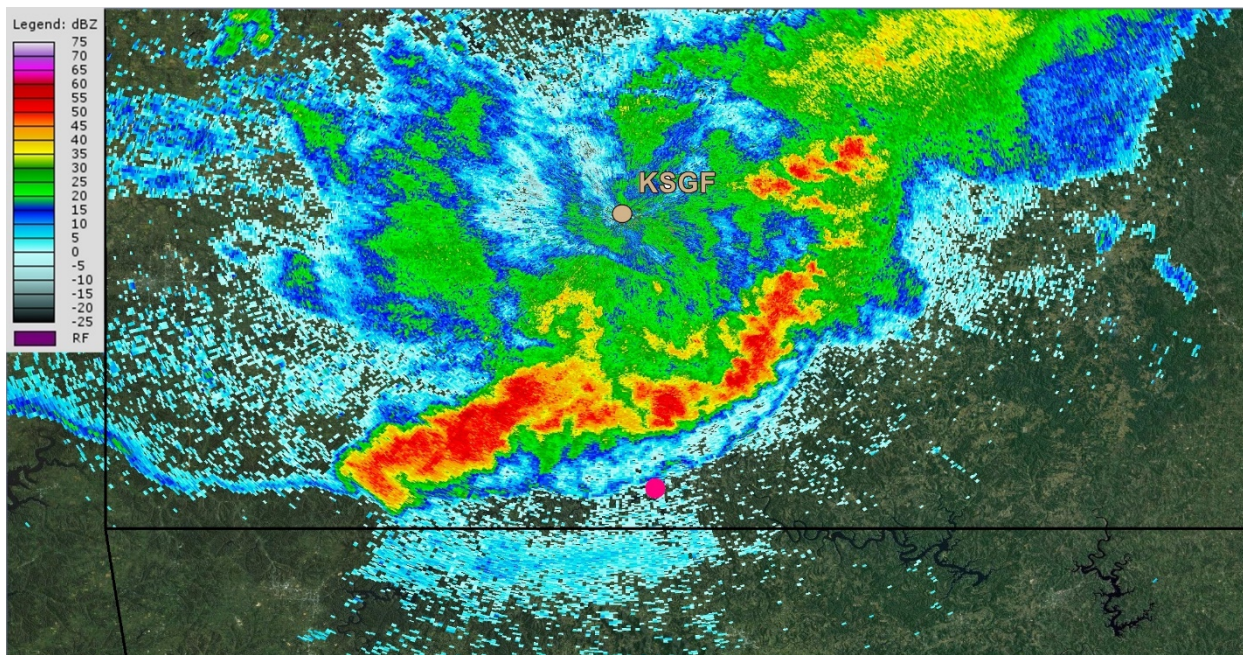


**Figure AC** – KSGF Level-II  $\sim 0.5^\circ$  base reflectivity image from a sweep initiated about 1853:55 CDT. Accident site is denoted by the pink circle.

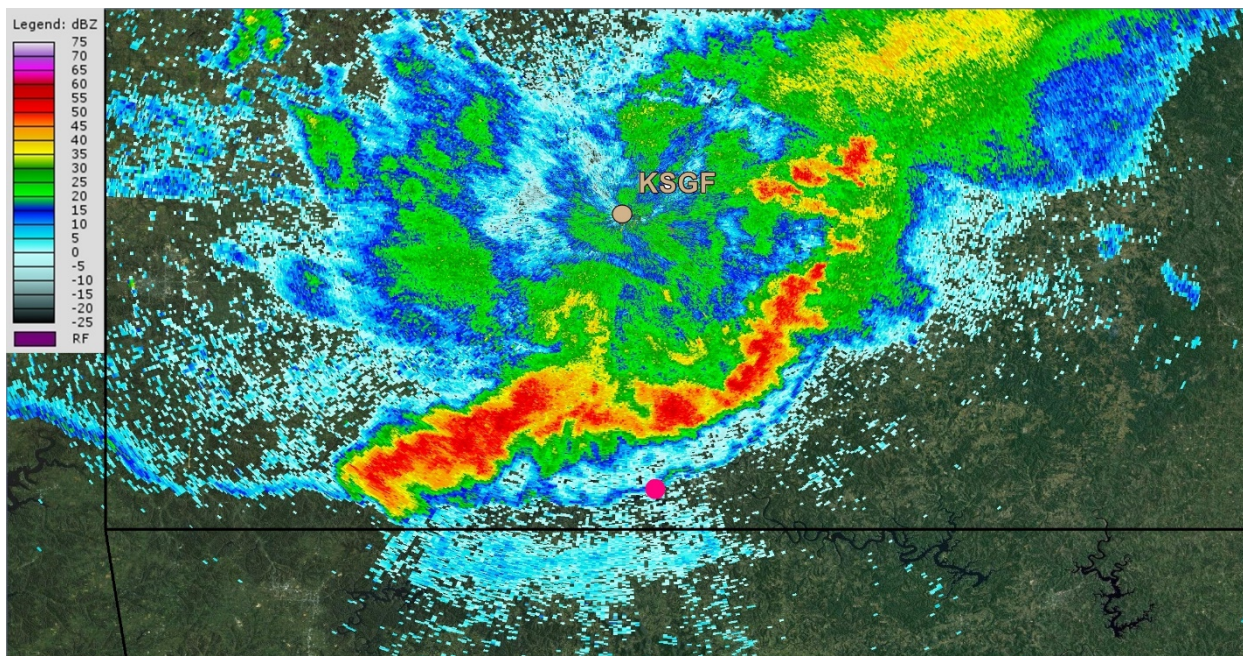


**Figure AD** – KSGF Level-II  $\sim 0.5^\circ$  base reflectivity image from a sweep initiated about 1855:32 CDT. Accident site is denoted by the pink circle.

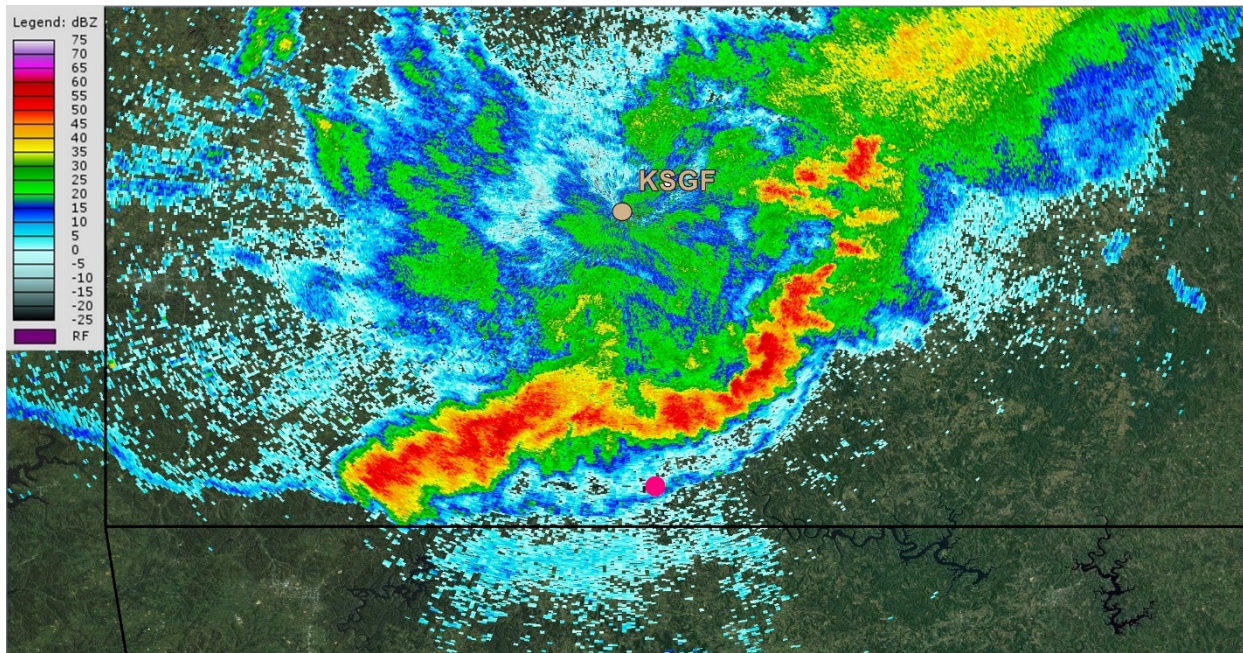




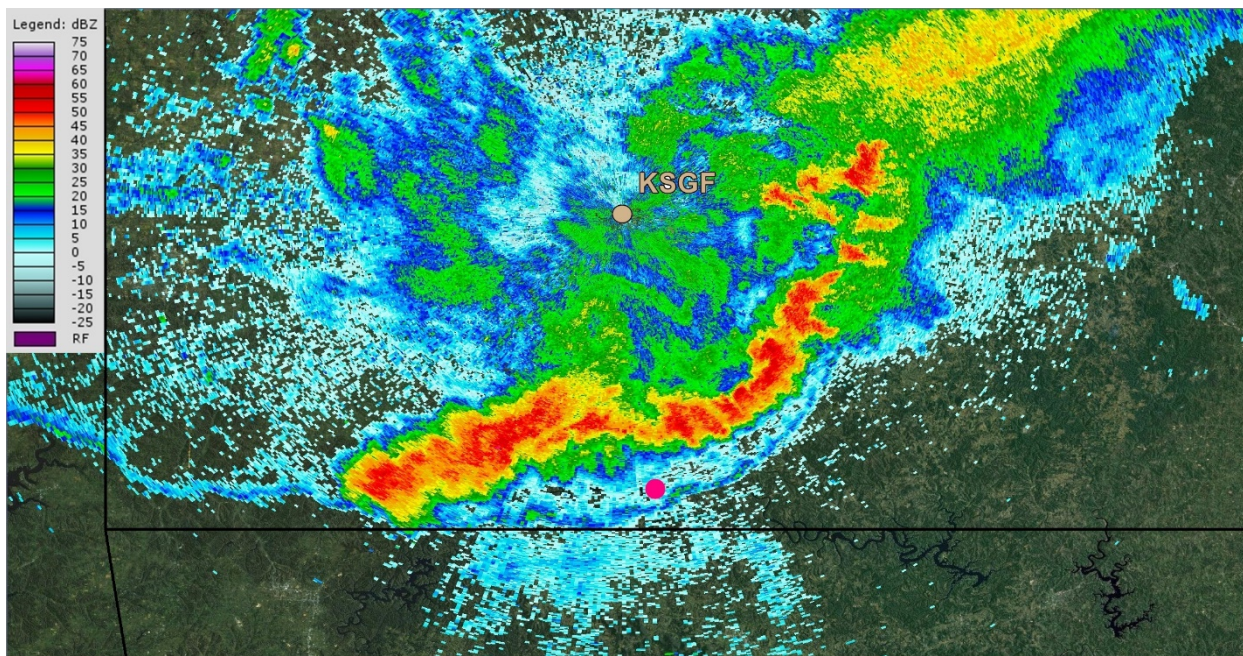
**Figure AE** – KSGF Level-II  $\sim 0.5^\circ$  base reflectivity image from a sweep initiated about 1857:32 CDT. Accident site is denoted by the pink circle.



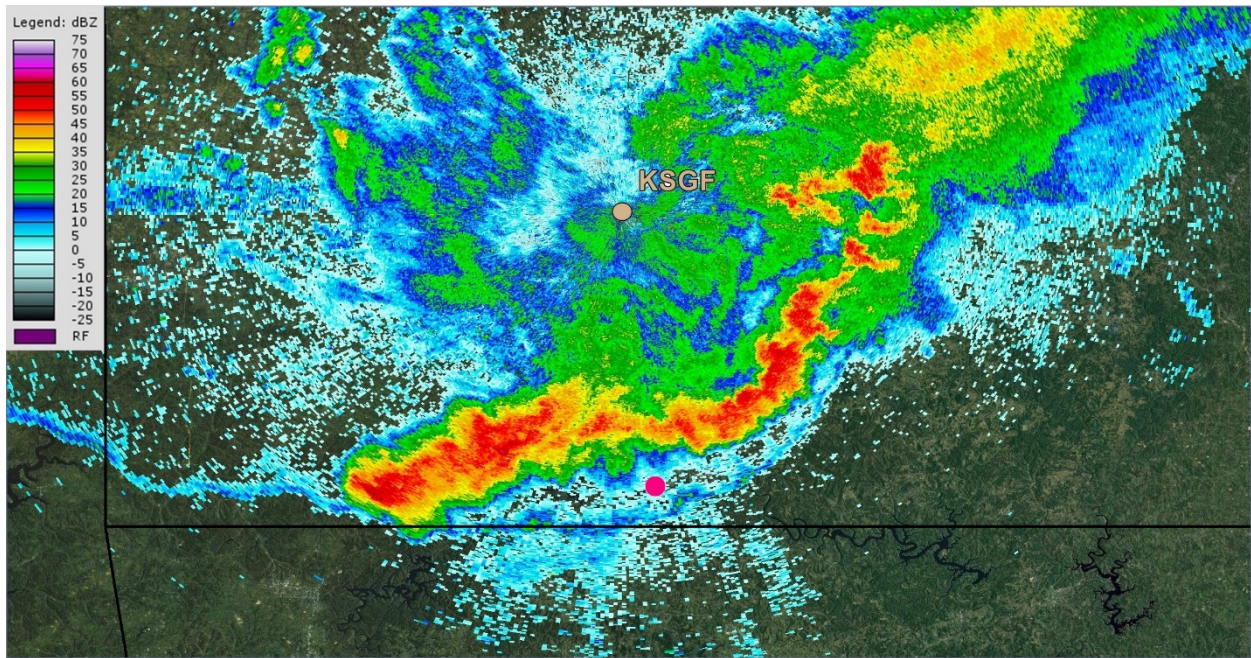
**Figure AF** – KSGF Level-II  $\sim 0.5^\circ$  base reflectivity image from a sweep initiated about 1859:17 CDT. Accident site is denoted by the pink circle.



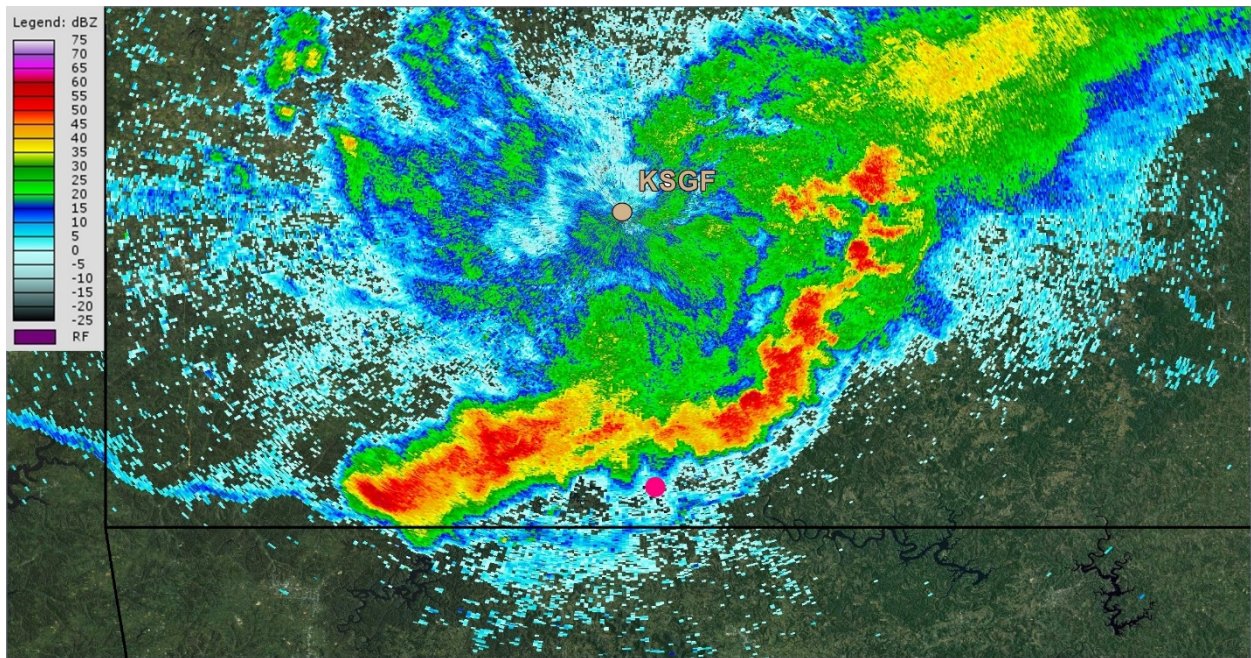
**Figure AG** – KSGF Level-II  $\sim 0.5^\circ$  base reflectivity image from a sweep initiated about 1901:22 CDT. Accident site is denoted by the pink circle.



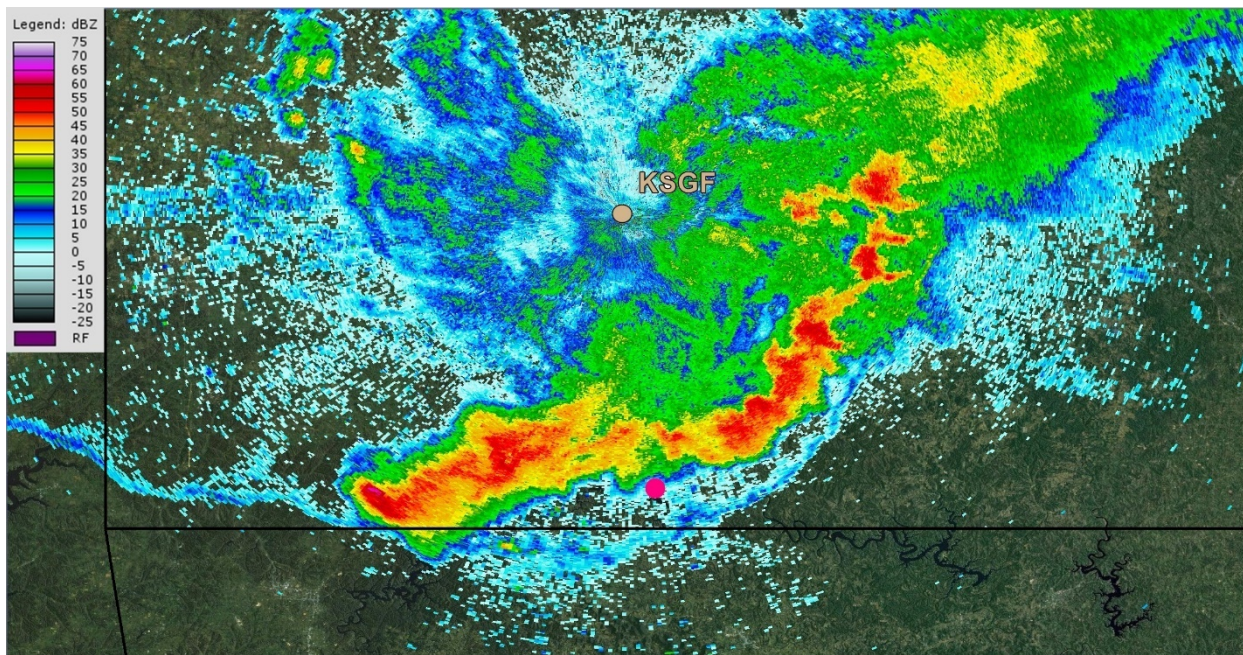
**Figure AH** – KSGF Level-II  $\sim 0.5^\circ$  base reflectivity image from a sweep initiated about 1902:56 CDT. Accident site is denoted by the pink circle.



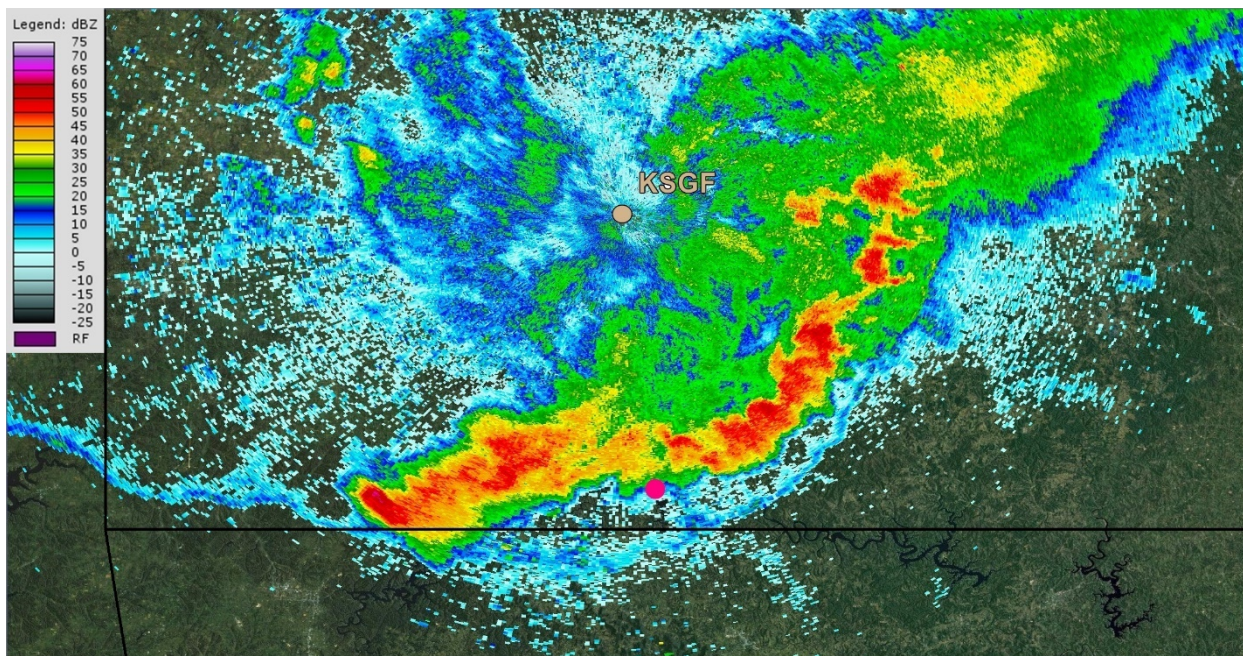
**Figure AI** – KSGF Level-II  $\sim 0.5^\circ$  base reflectivity image from a sweep initiated about 1904:58 CDT. Accident site is denoted by the pink circle.



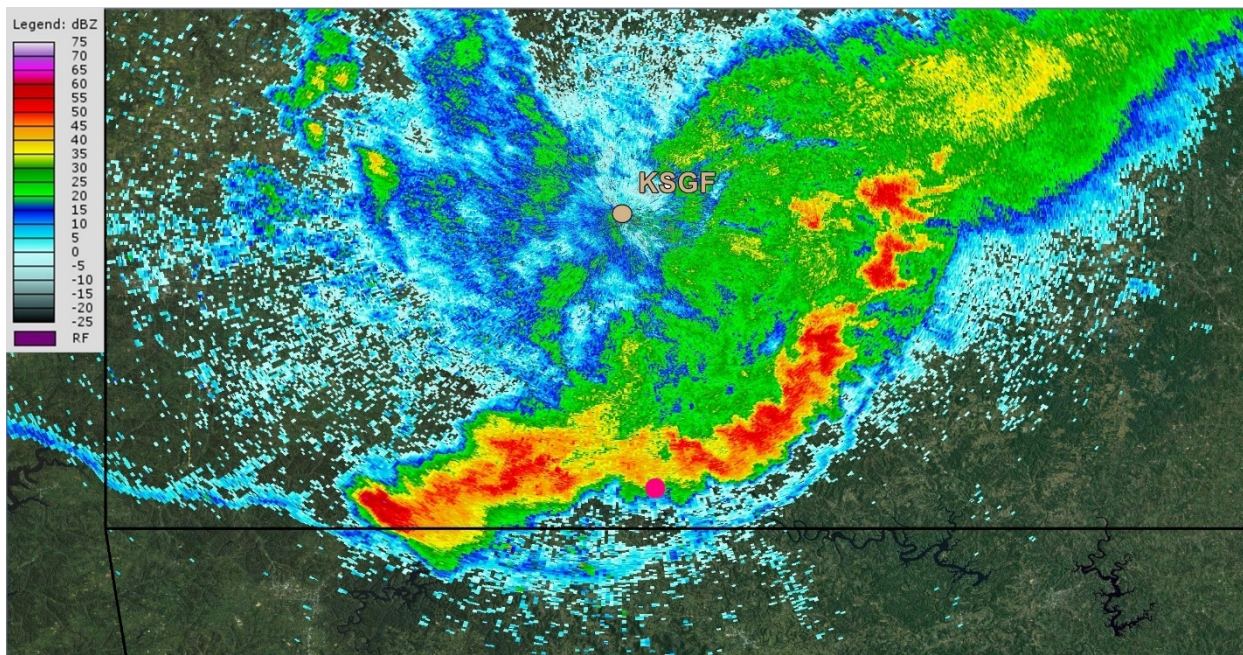
**Figure AJ** – KSGF Level-II  $\sim 0.5^\circ$  base reflectivity image from a sweep initiated about 1906:45 CDT. Accident site is denoted by the pink circle.



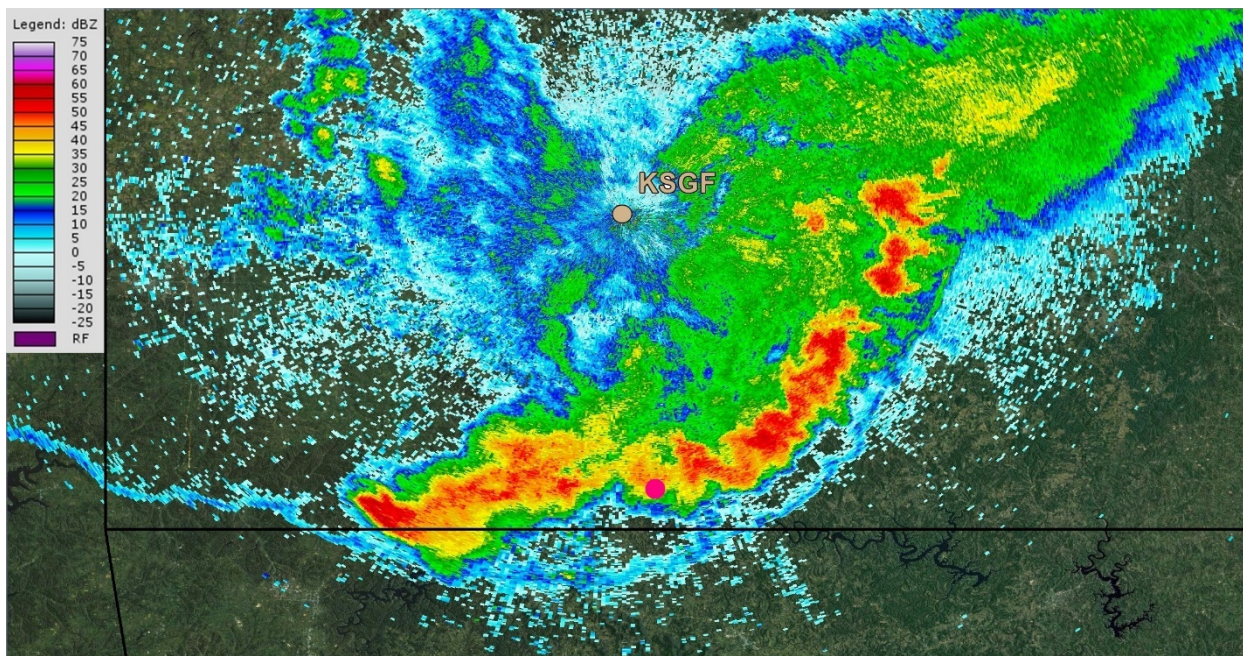
**Figure AK** – KSGF Level-II  $\sim 0.5^\circ$  base reflectivity image from a sweep initiated about 1908:49 CDT. Accident site is denoted by the pink circle.



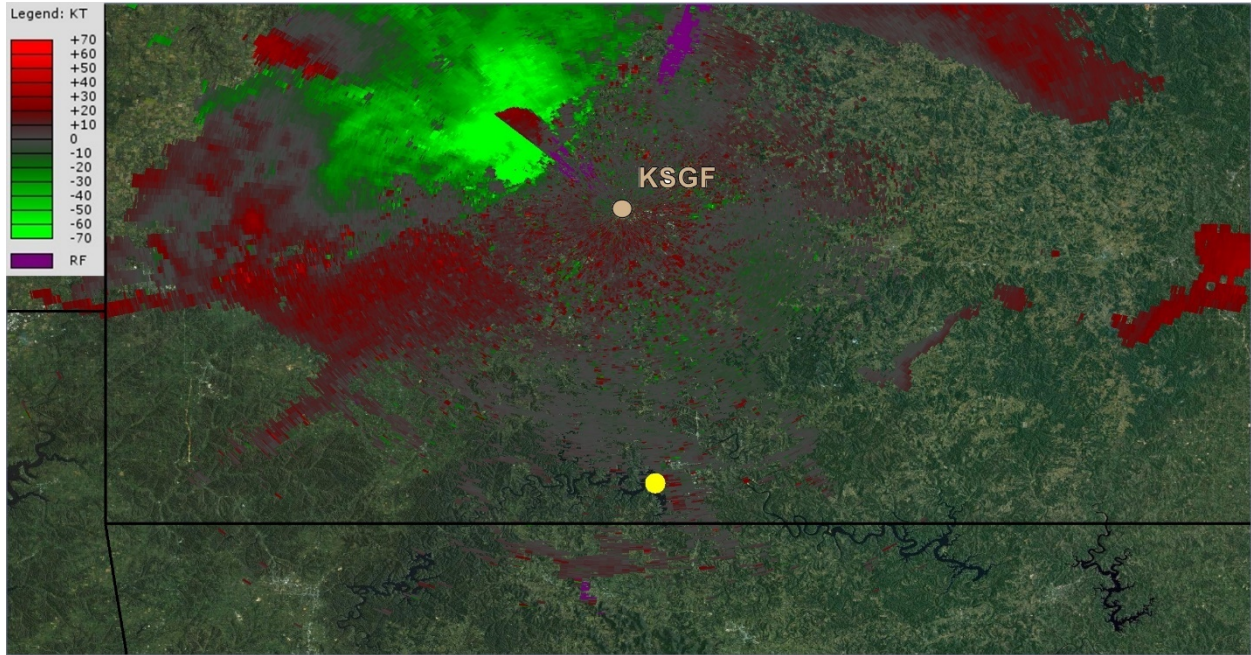
**Figure AL** – KSGF Level-II  $\sim 0.5^\circ$  base reflectivity image from a sweep initiated about 1910:24 CDT. Accident site is denoted by the pink circle.



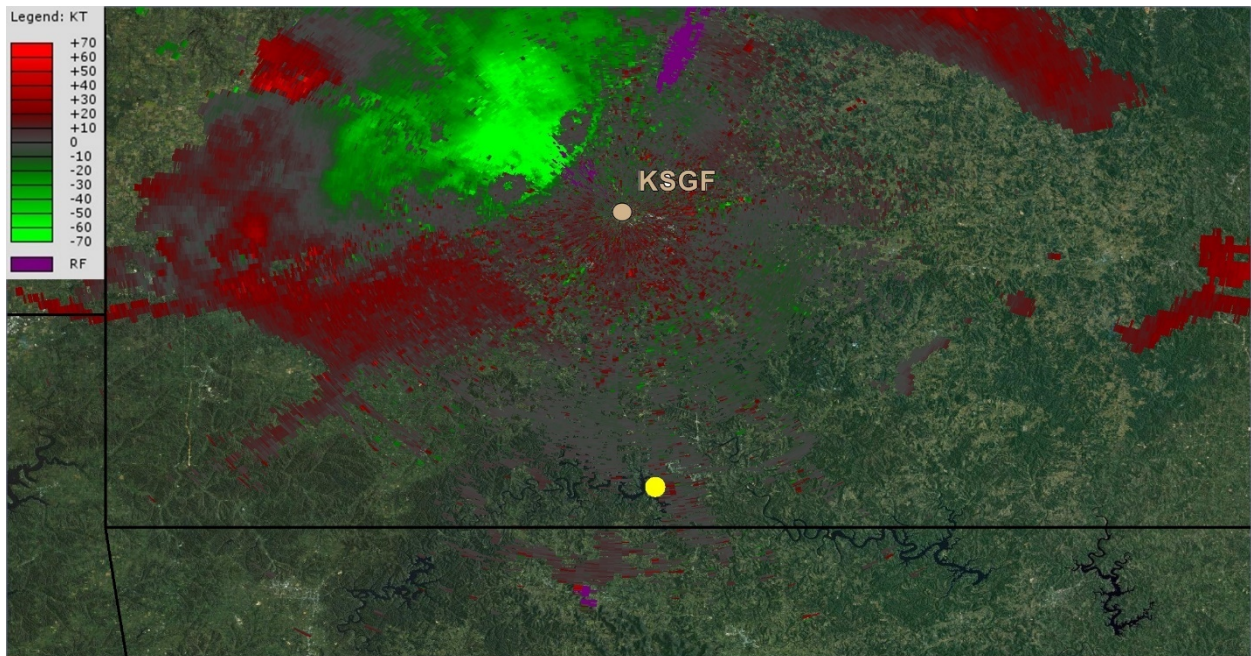
**Figure AM** – KSGF Level-II  $\sim 0.5^\circ$  base reflectivity image from a sweep initiated about 1912:26 CDT. Accident site is denoted by the pink circle.



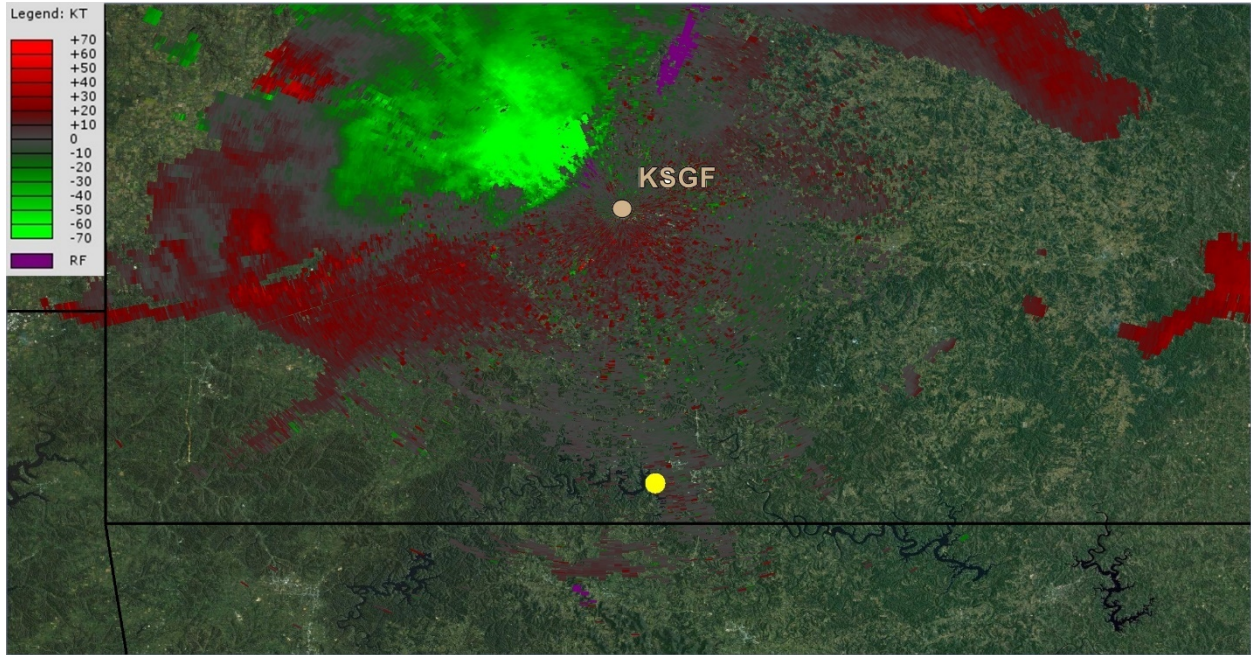
**Figure AN** – KSGF Level-II  $\sim 0.5^\circ$  base reflectivity image from a sweep initiated about 1914:12 CDT. Accident site is denoted by the pink circle.



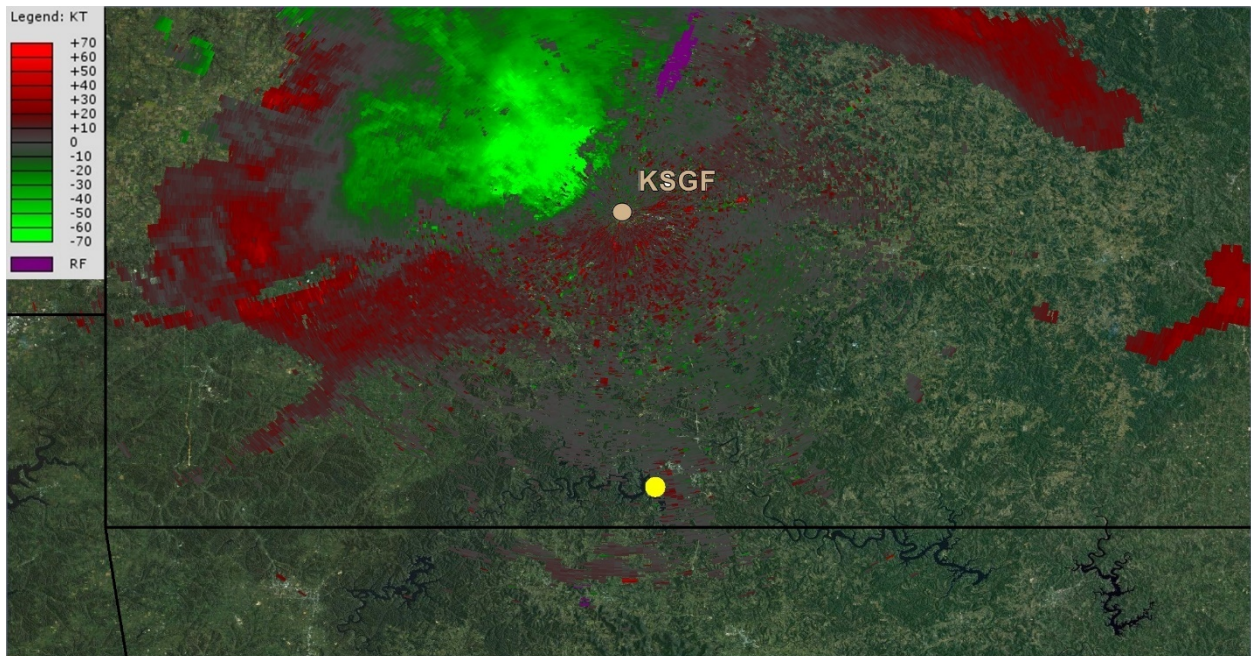
**Figure AO** – KSGF Level-III  $\sim 0.5^\circ$  base velocity image from a sweep initiated about 1802 CDT. Accident site is denoted by the yellow circle.



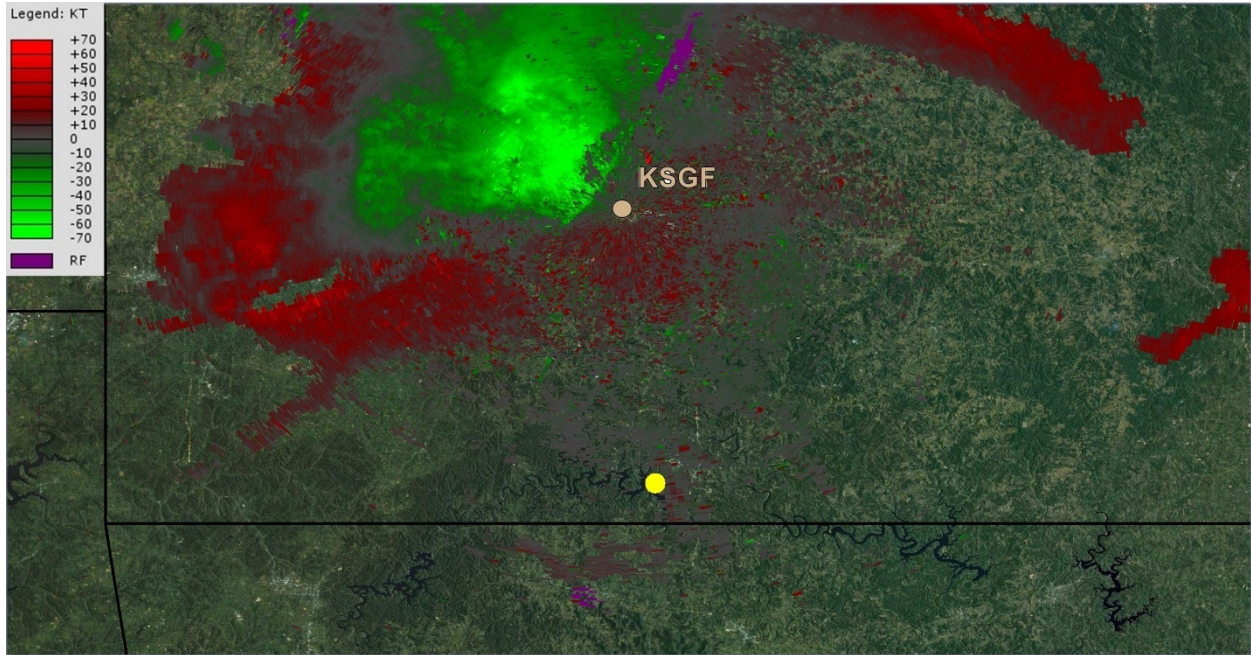
**Figure AP** – KSGF Level-III  $\sim 0.5^\circ$  base velocity image from a sweep initiated about 1803 CDT. Accident site is denoted by the yellow circle.



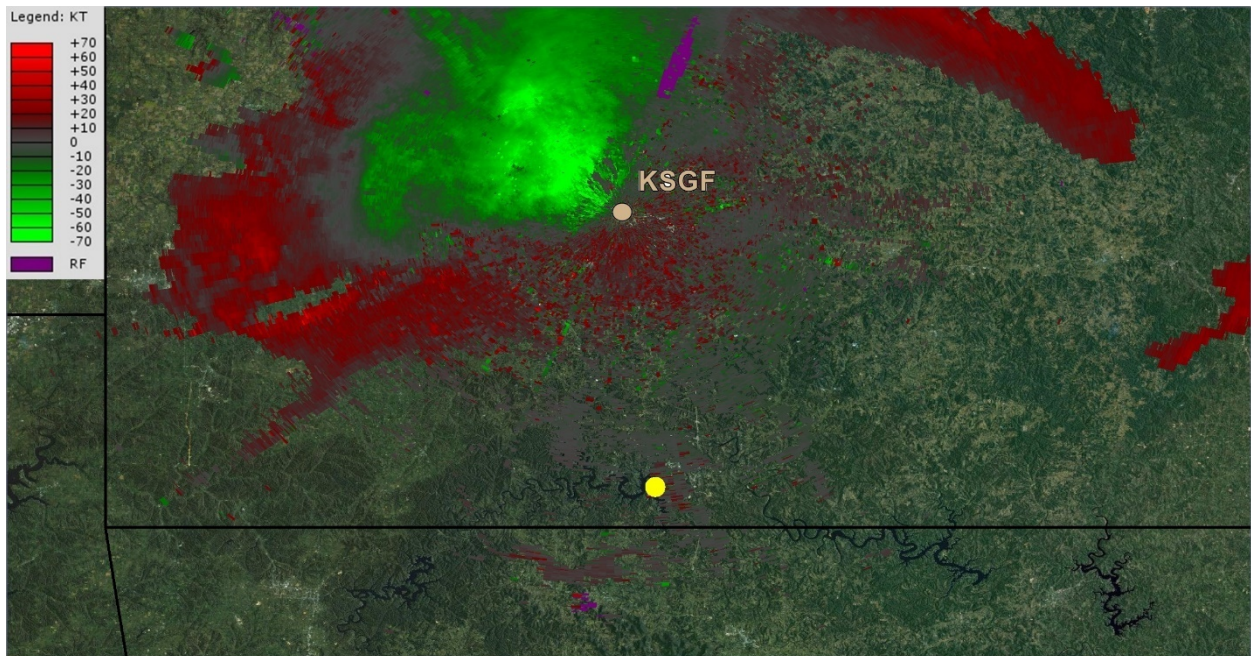
**Figure AQ** – KSGF Level-III ~0.5° base velocity image from a sweep initiated about 1805 CDT. Accident site is denoted by the yellow circle.



**Figure AR** – KSGF Level-III ~0.5° base velocity image from a sweep initiated about 1807 CDT. Accident site is denoted by the yellow circle.

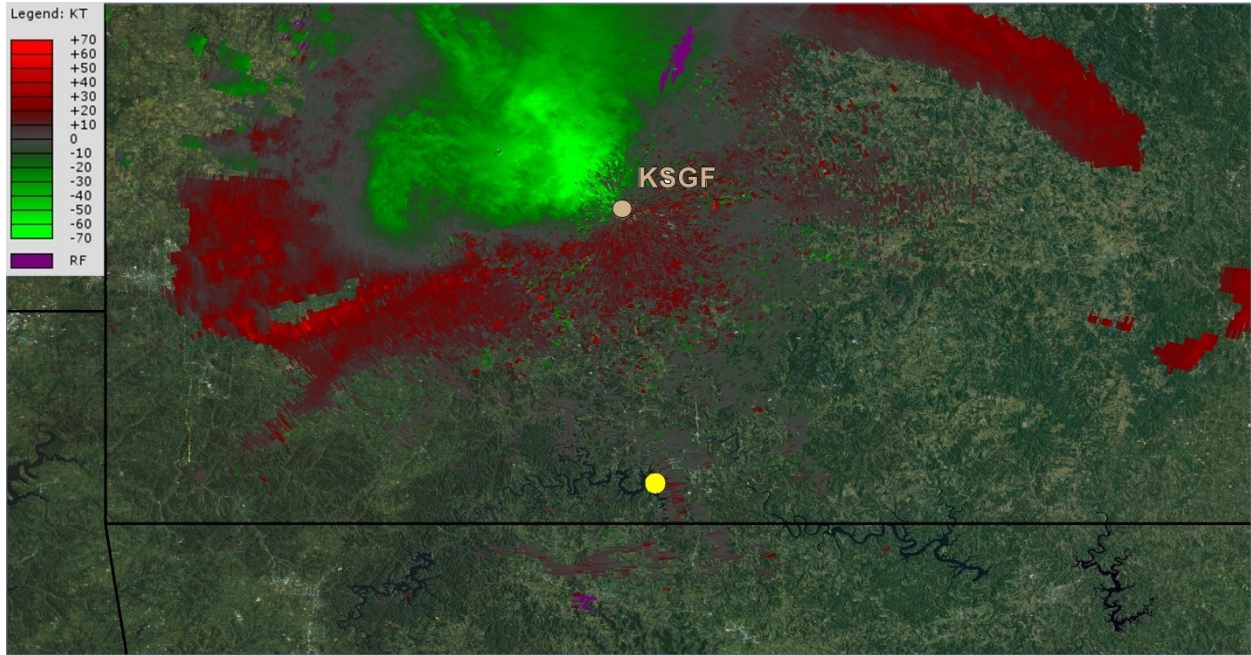


**Figure AS** – KSGF Level-III  $\sim 0.5^\circ$  base velocity image from a sweep initiated about 1809 CDT. Accident site is denoted by the yellow circle.

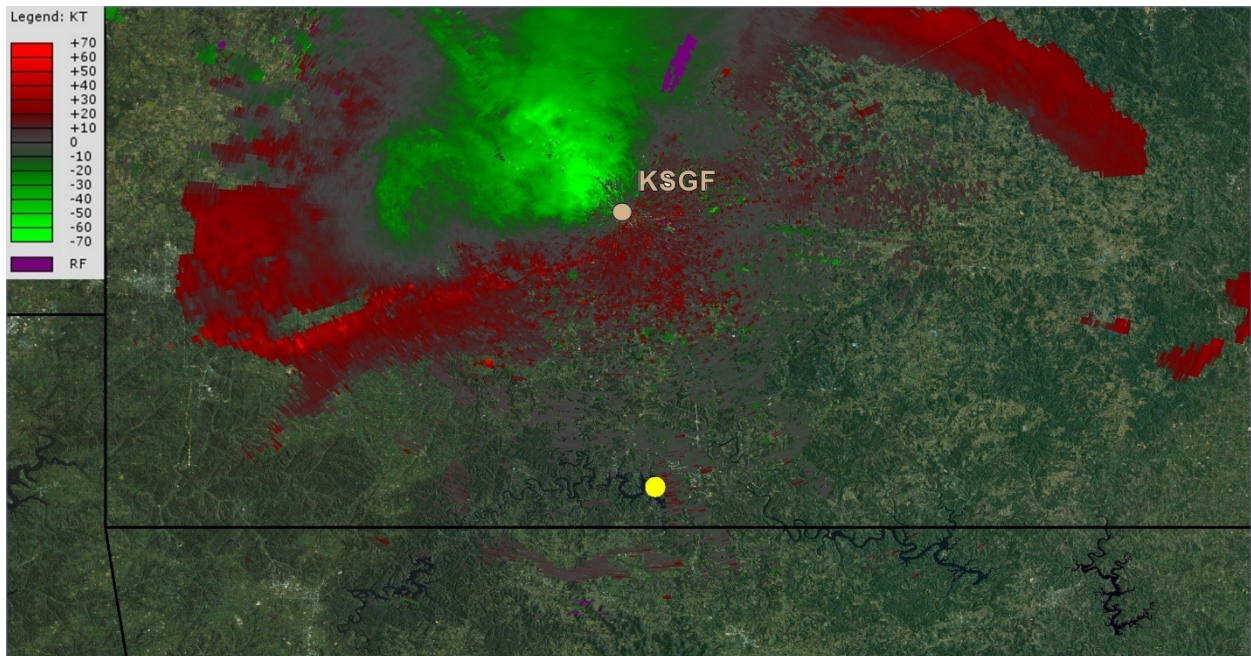


**Figure AT** – KSGF Level-III  $\sim 0.5^\circ$  base velocity image from a sweep initiated about 1811 CDT. Accident site is denoted by the yellow circle.

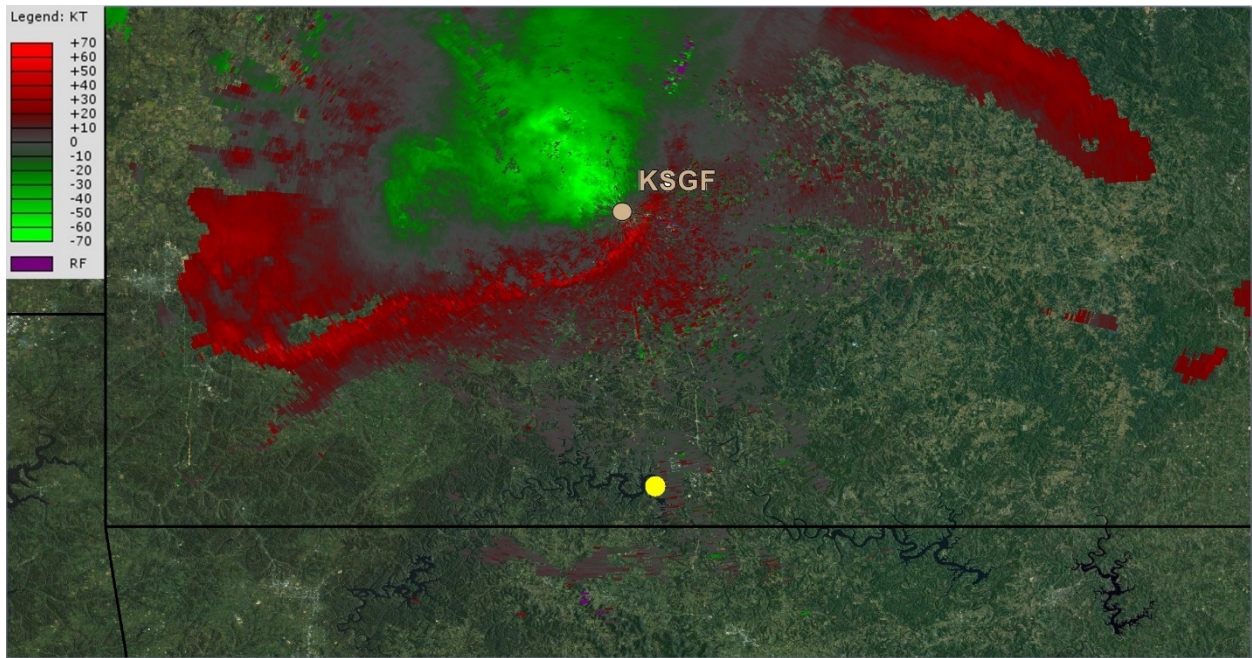




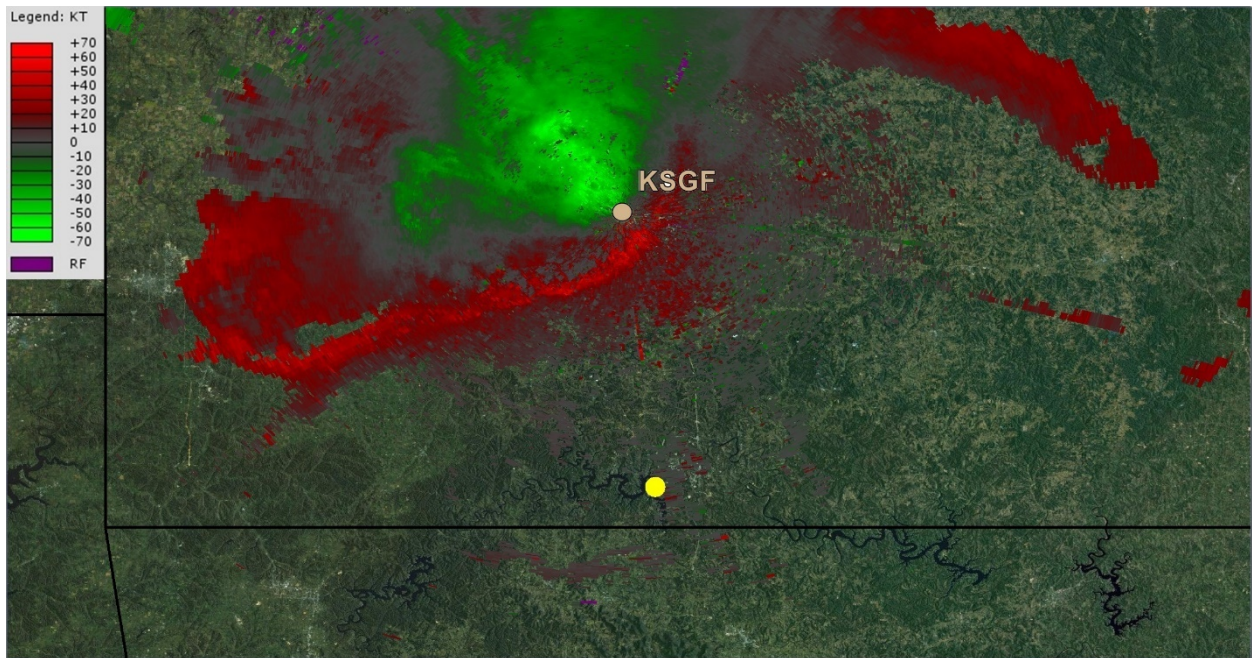
**Figure AU** – KSGF Level-III ~0.5° base velocity image from a sweep initiated about 1813 CDT. Accident site is denoted by the yellow circle.



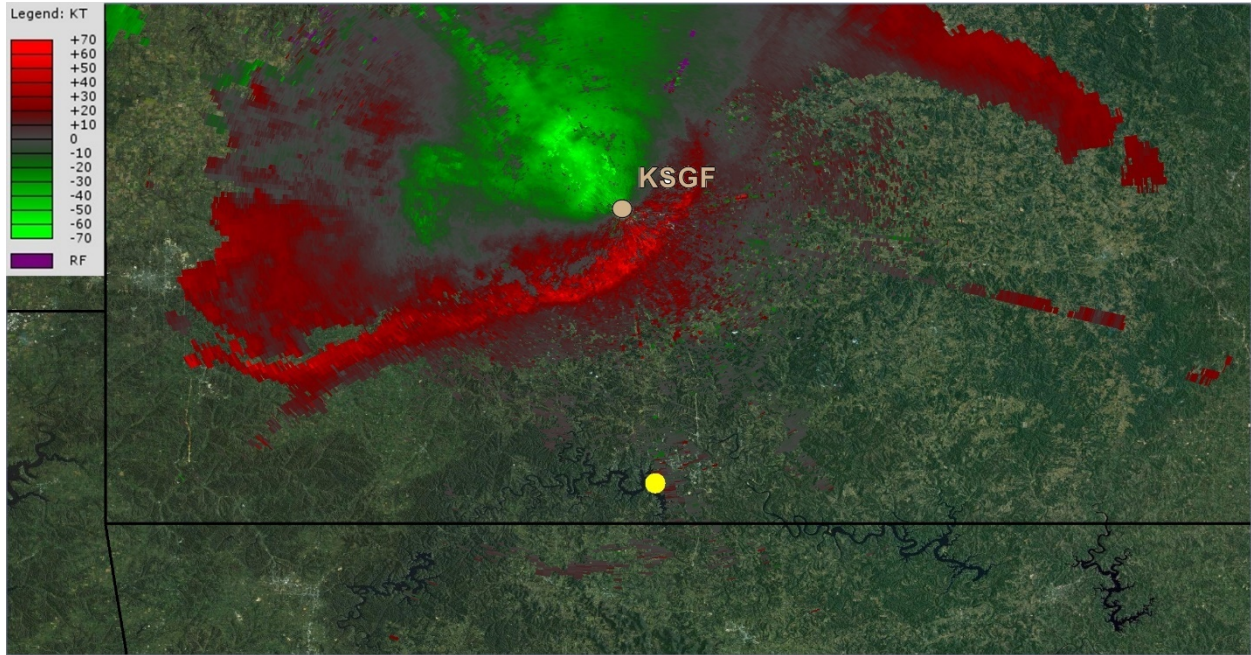
**Figure AV** – KSGF Level-III ~0.5° base velocity image from a sweep initiated about 1815 CDT. Accident site is denoted by the yellow circle.



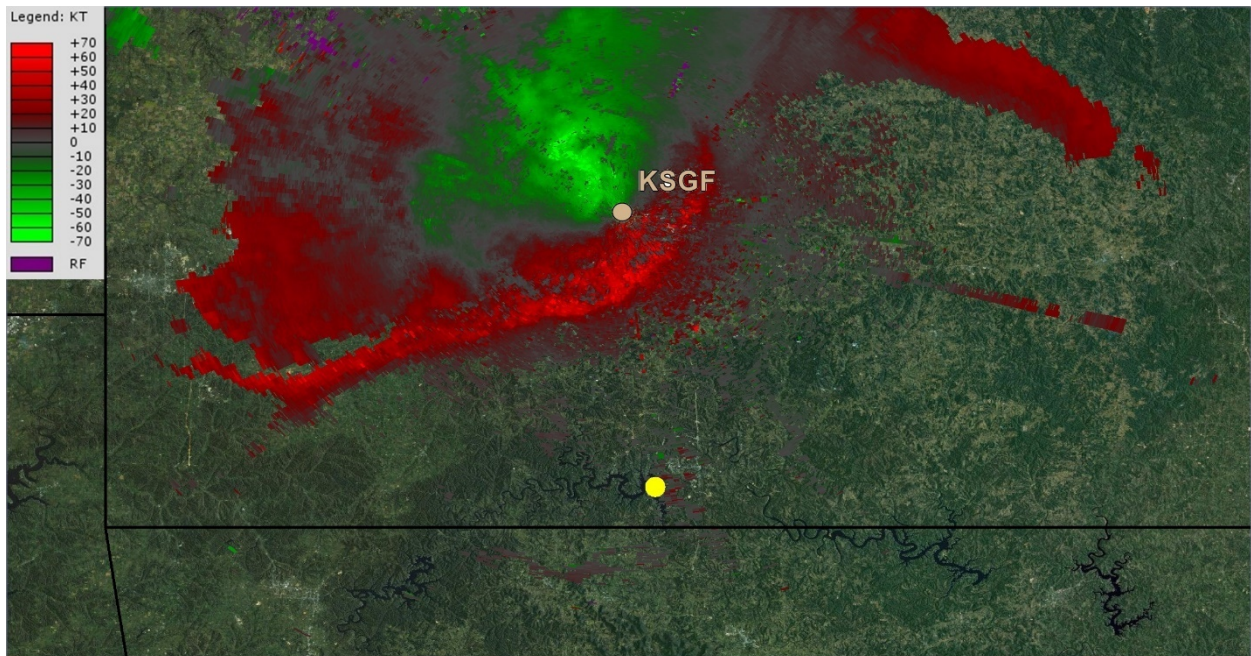
**Figure AW** – KSGF Level-III  $\sim 0.5^\circ$  base velocity image from a sweep initiated about 1817 CDT. Accident site is denoted by the yellow circle.



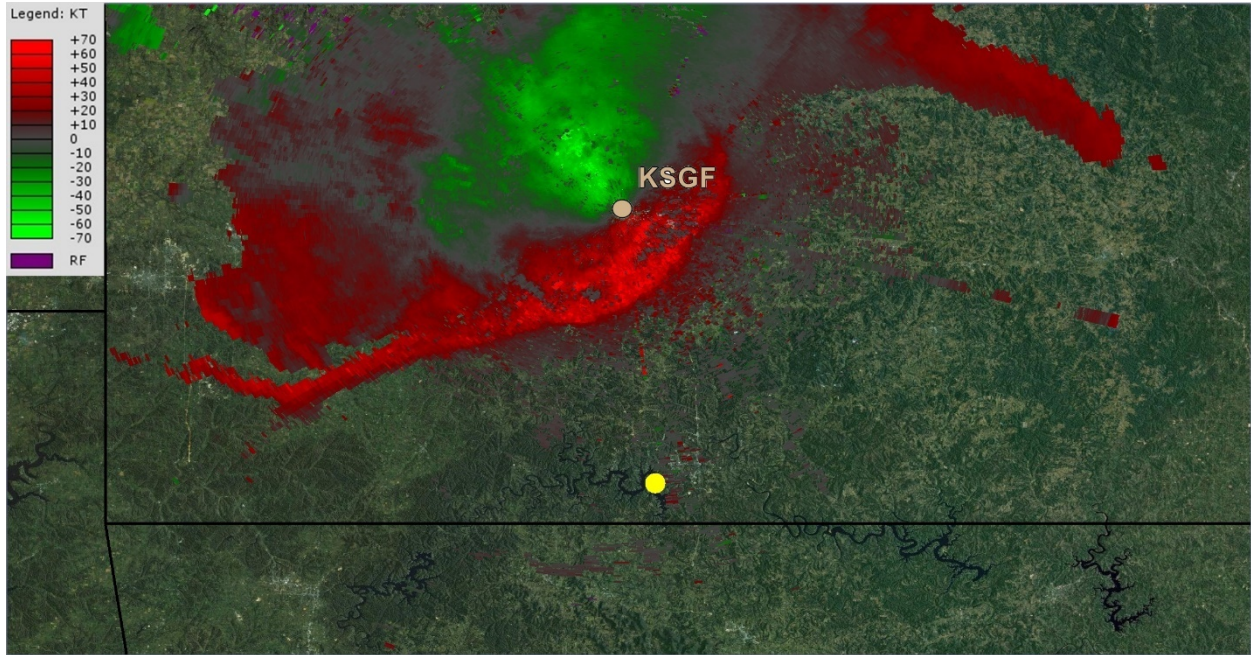
**Figure AX** – KSGF Level-III  $\sim 0.5^\circ$  base velocity image from a sweep initiated about 1818 CDT. Accident site is denoted by the yellow circle.



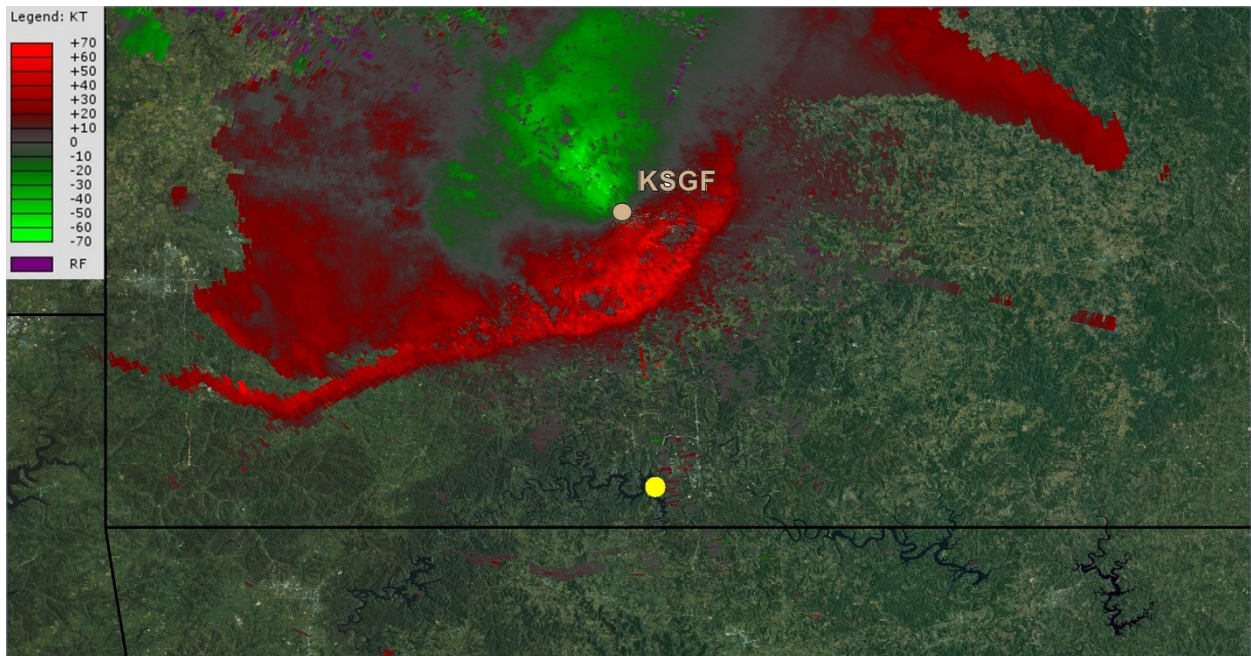
**Figure AY** – KSGF Level-III ~0.5° base velocity image from a sweep initiated about 1820 CDT. Accident site is denoted by the yellow circle.



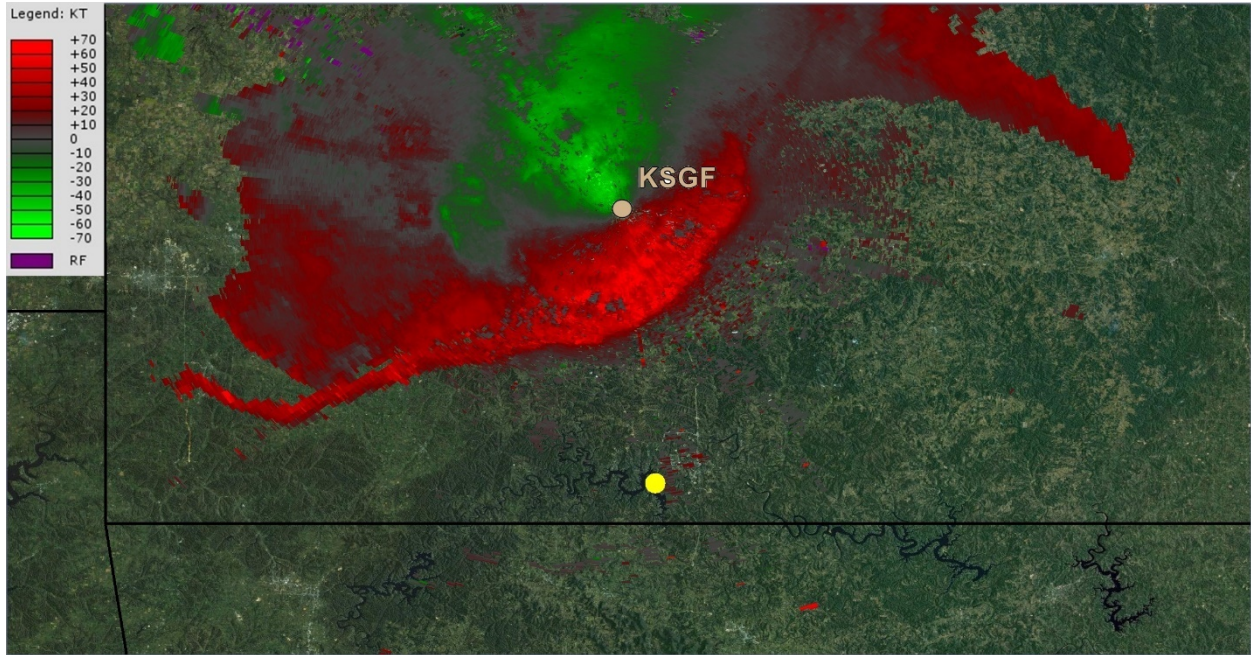
**Figure AZ** – KSGF Level-III ~0.5° base velocity image from a sweep initiated about 1822 CDT. Accident site is denoted by the yellow circle.



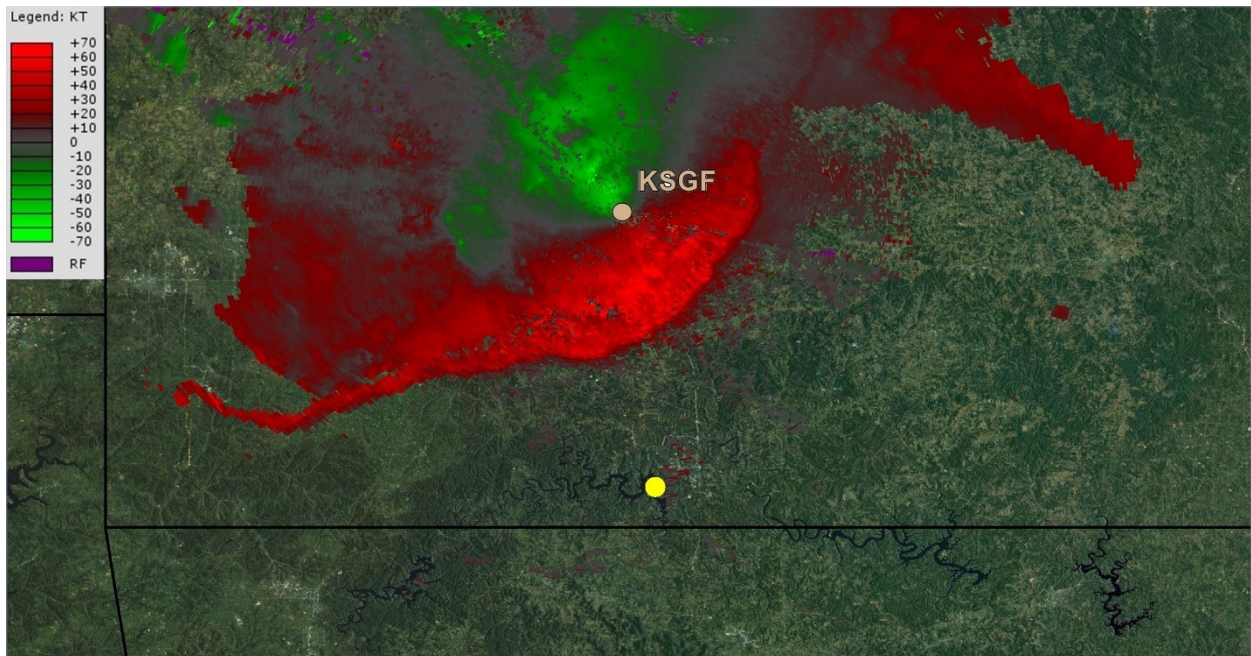
**Figure BA** – KSGF Level-III ~0.5° base velocity image from a sweep initiated about 1824 CDT. Accident site is denoted by the yellow circle.



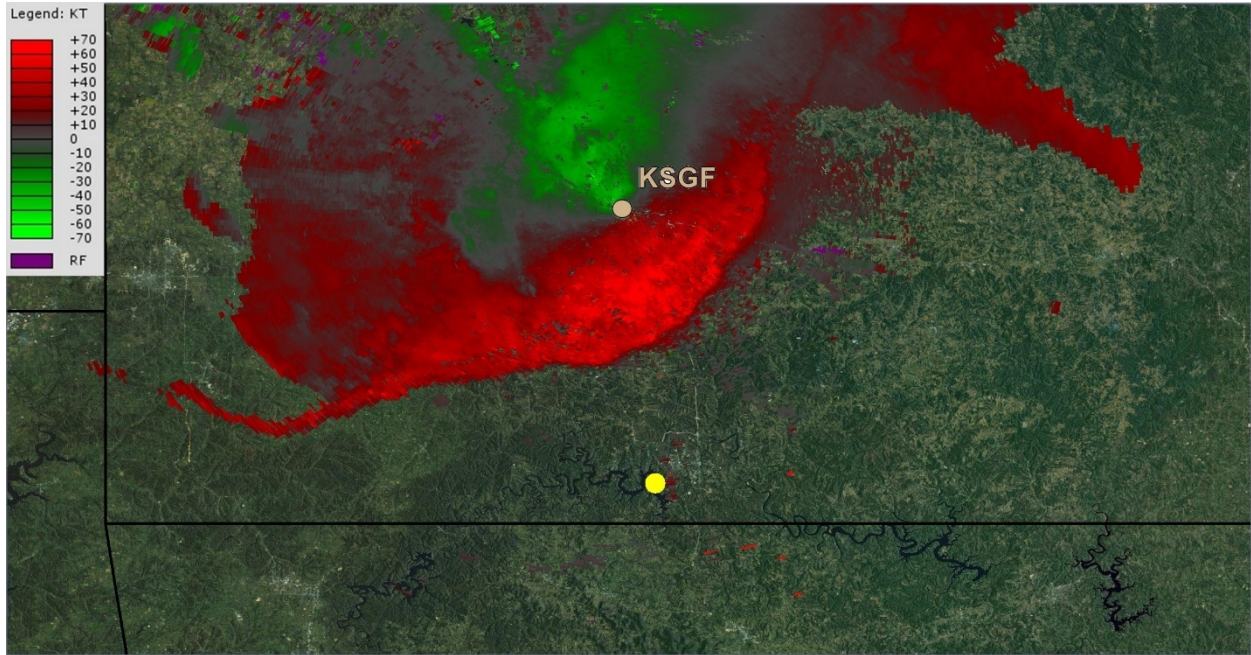
**Figure BB** – KSGF Level-III ~0.5° base velocity image from a sweep initiated about 1826 CDT. Accident site is denoted by the yellow circle.



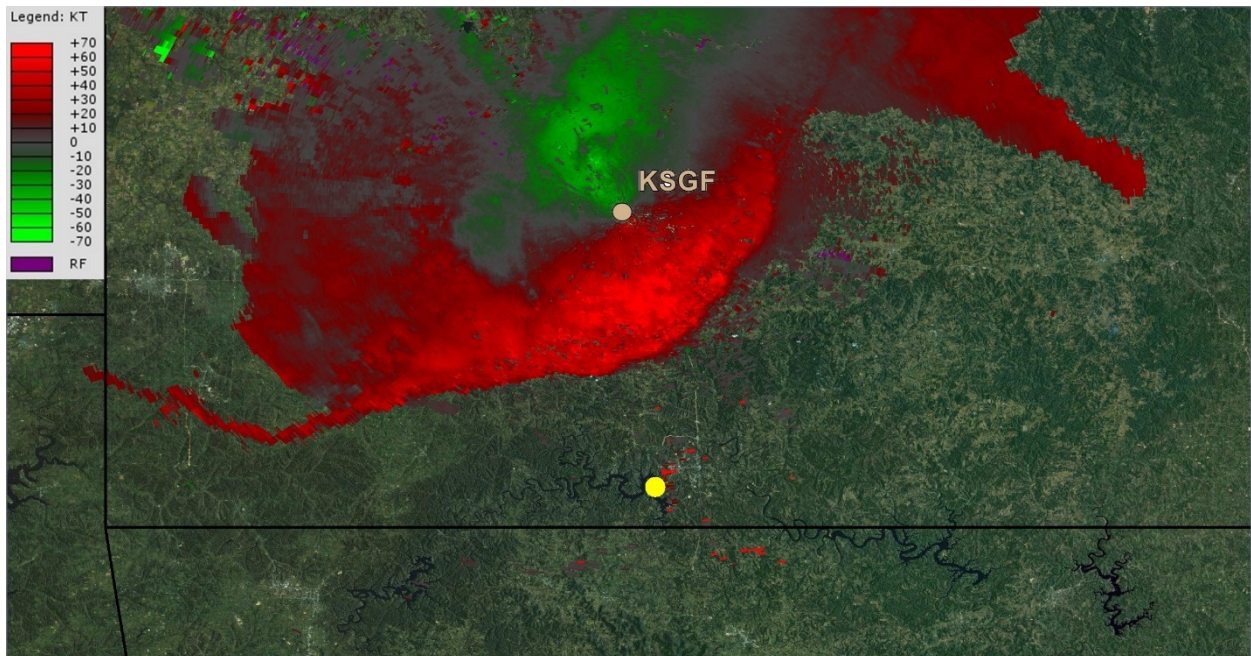
**Figure BC** – KSGF Level-III ~0.5° base velocity image from a sweep initiated about 1828 CDT. Accident site is denoted by the yellow circle.



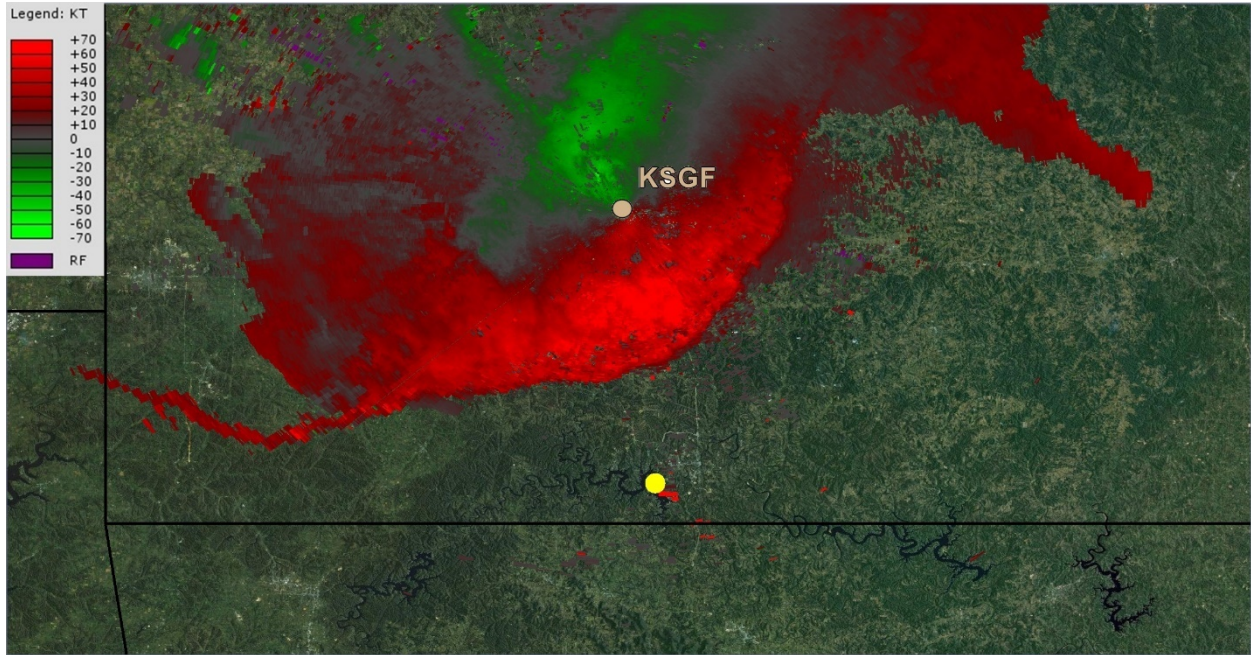
**Figure BD** – KSGF Level-III ~0.5° base velocity image from a sweep initiated about 1830 CDT. Accident site is denoted by the yellow circle.



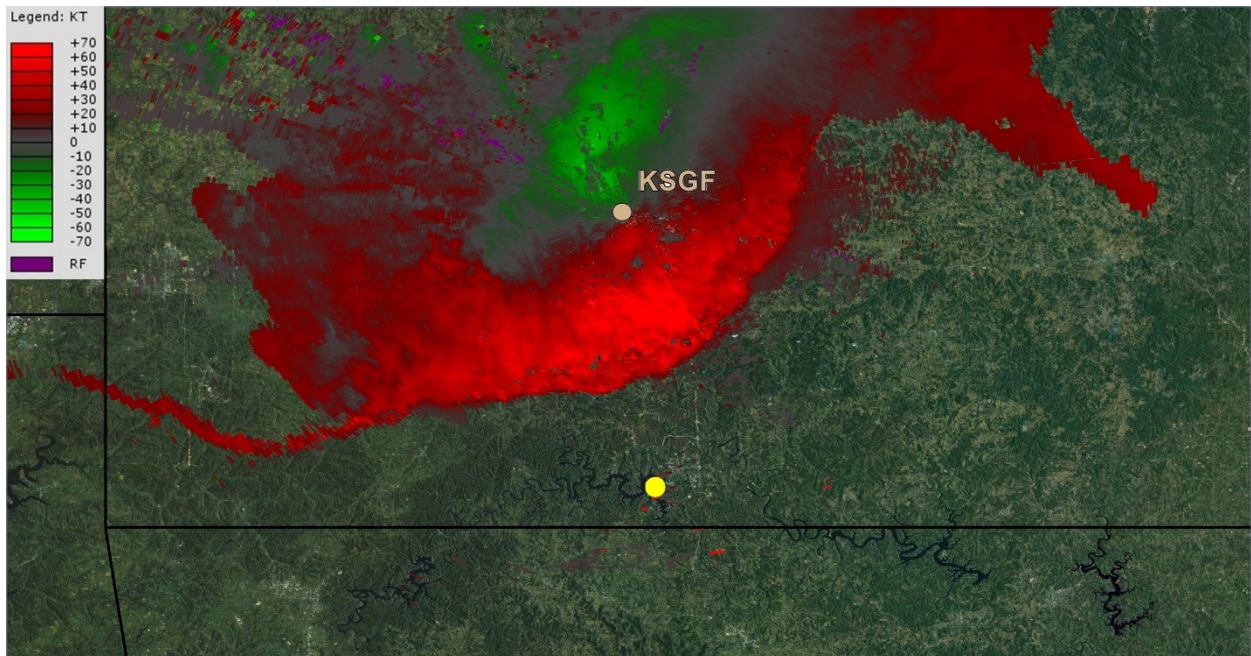
**Figure BE** – KSGF Level-III ~0.5° base velocity image from a sweep initiated about 1832 CDT. Accident site is denoted by the yellow circle.



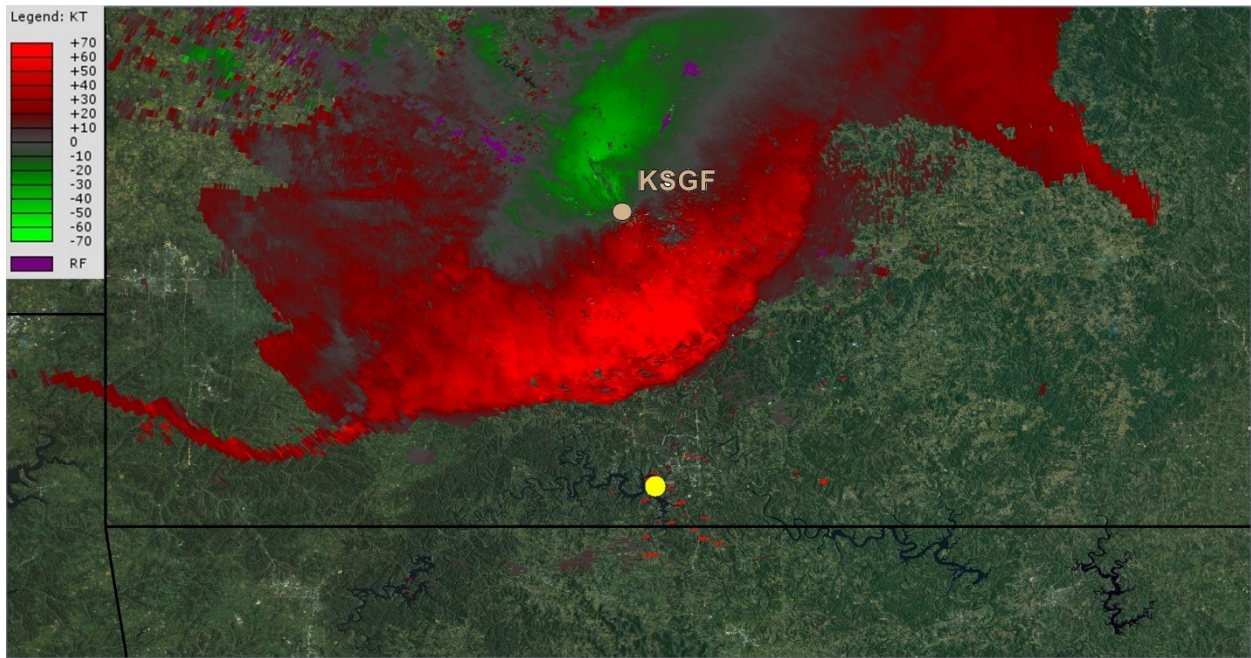
**Figure BF** – KSGF Level-III ~0.5° base velocity image from a sweep initiated about 1833 CDT. Accident site is denoted by the yellow circle.



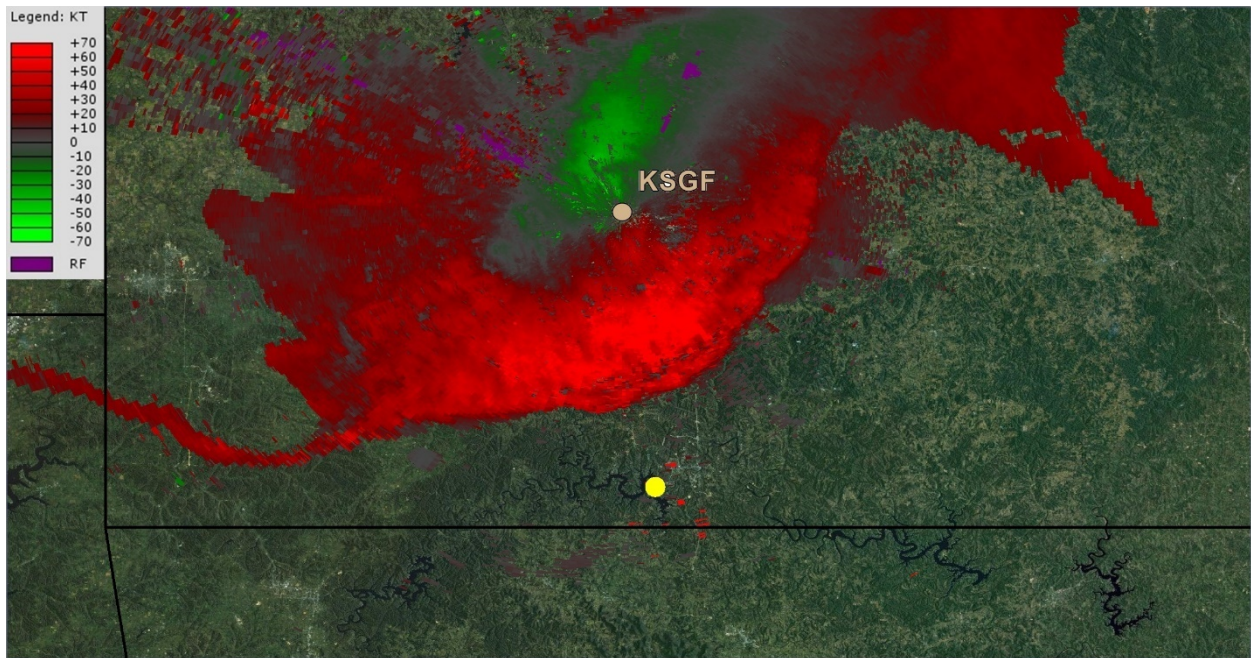
**Figure BG** – KSGF Level-III ~0.5° base velocity image from a sweep initiated about 1835 CDT. Accident site is denoted by the yellow circle.



**Figure BH** – KSGF Level-III ~0.5° base velocity image from a sweep initiated about 1837 CDT. Accident site is denoted by the yellow circle.

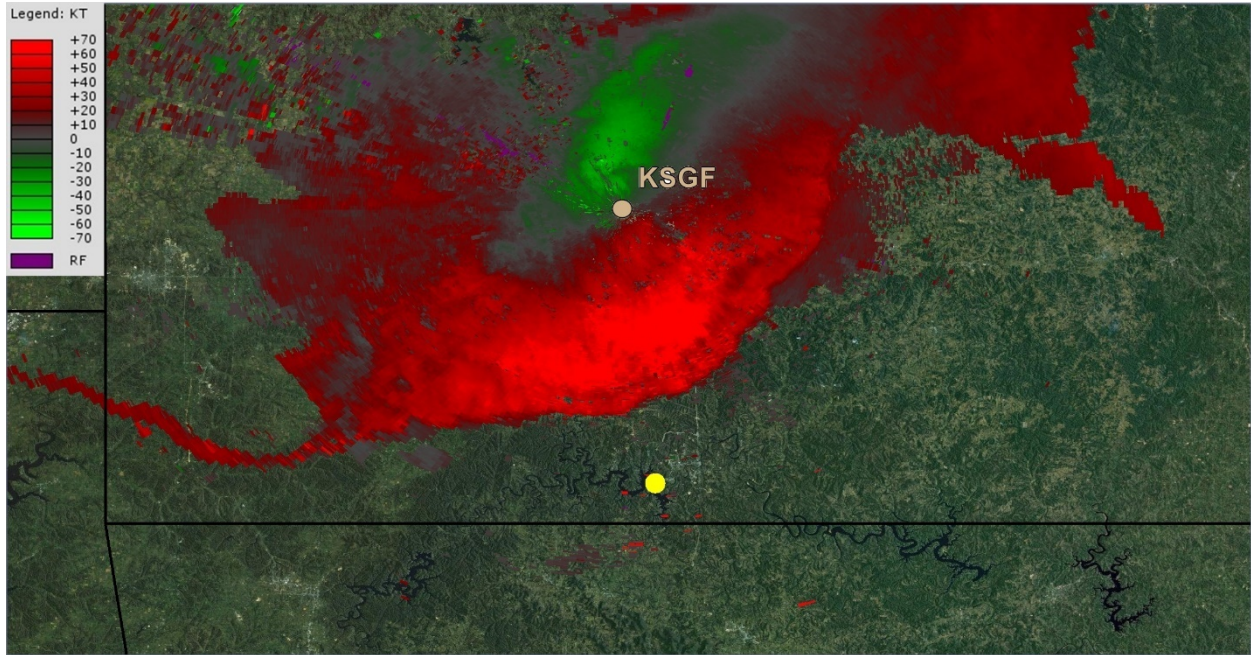


**Figure BI** – KSGF Level-III ~0.5° base velocity image from a sweep initiated about 1839 CDT. Accident site is denoted by the yellow circle.

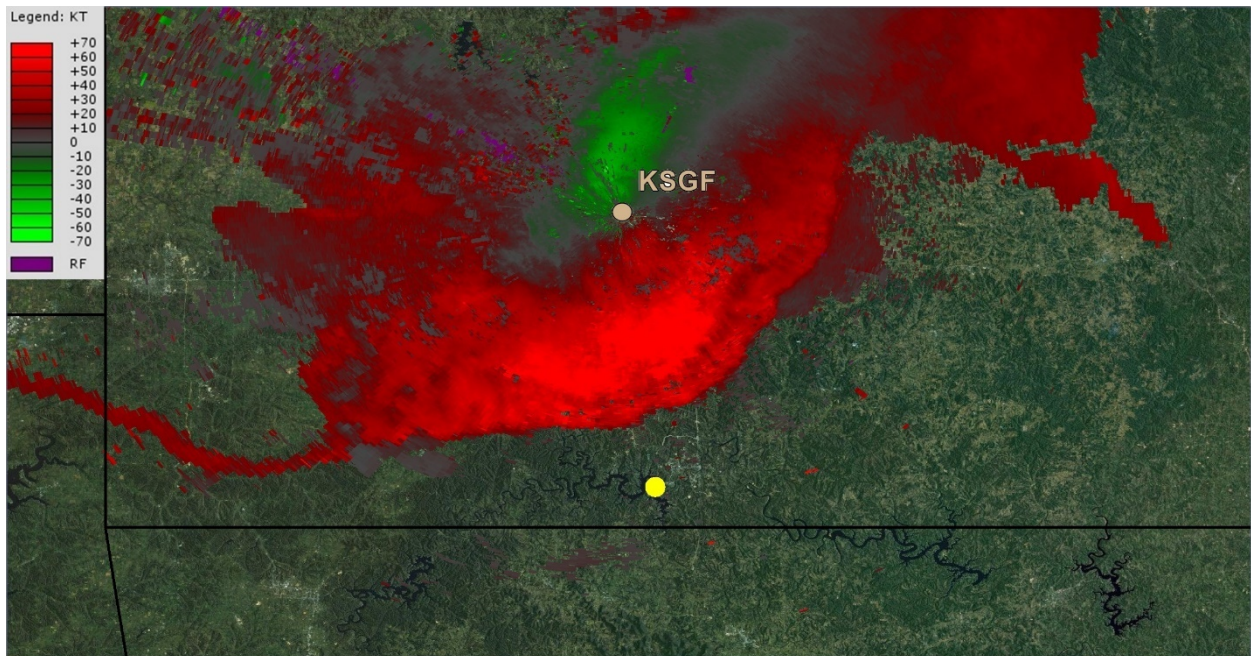


**Figure BJ** – KSGF Level-III ~0.5° base velocity image from a sweep initiated about 1841 CDT. Accident site is denoted by the yellow circle.

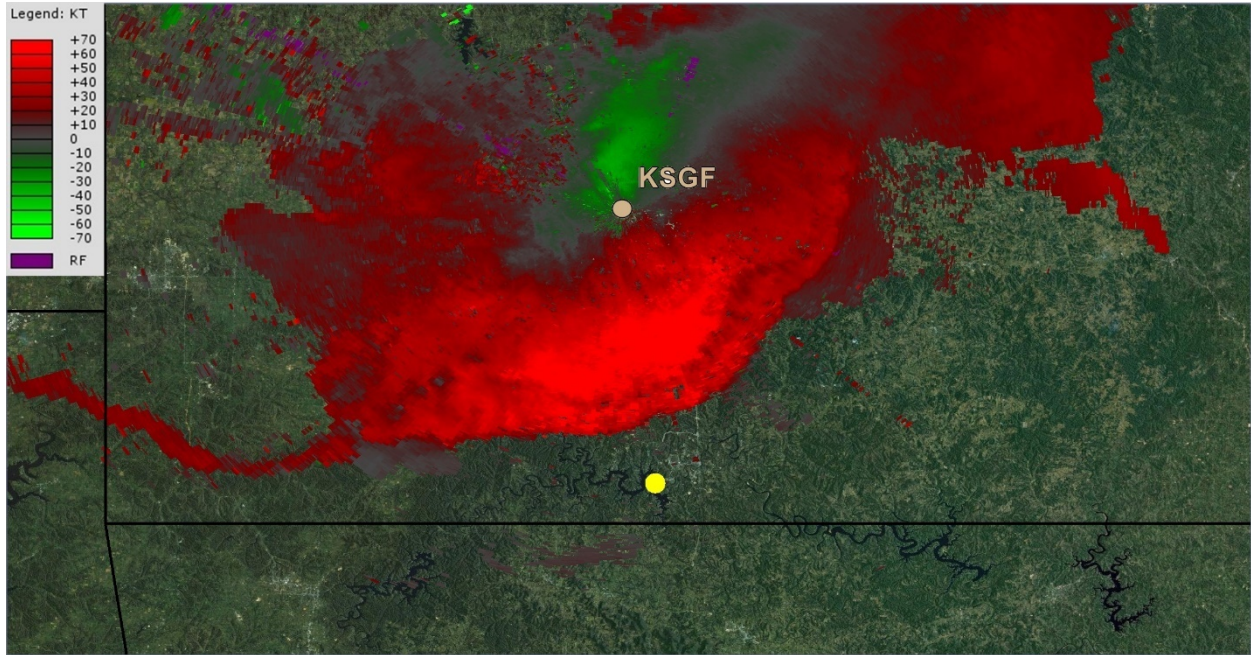




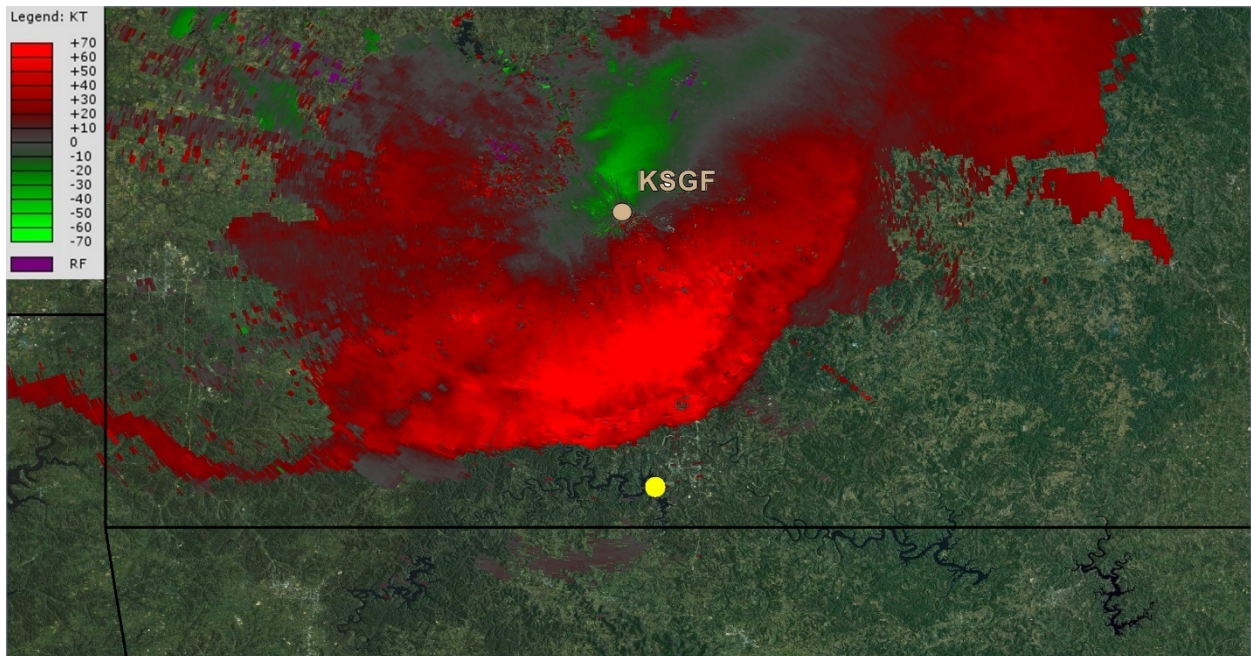
**Figure BK** – KSGF Level-III ~0.5° base velocity image from a sweep initiated about 1843 CDT. Accident site is denoted by the yellow circle.



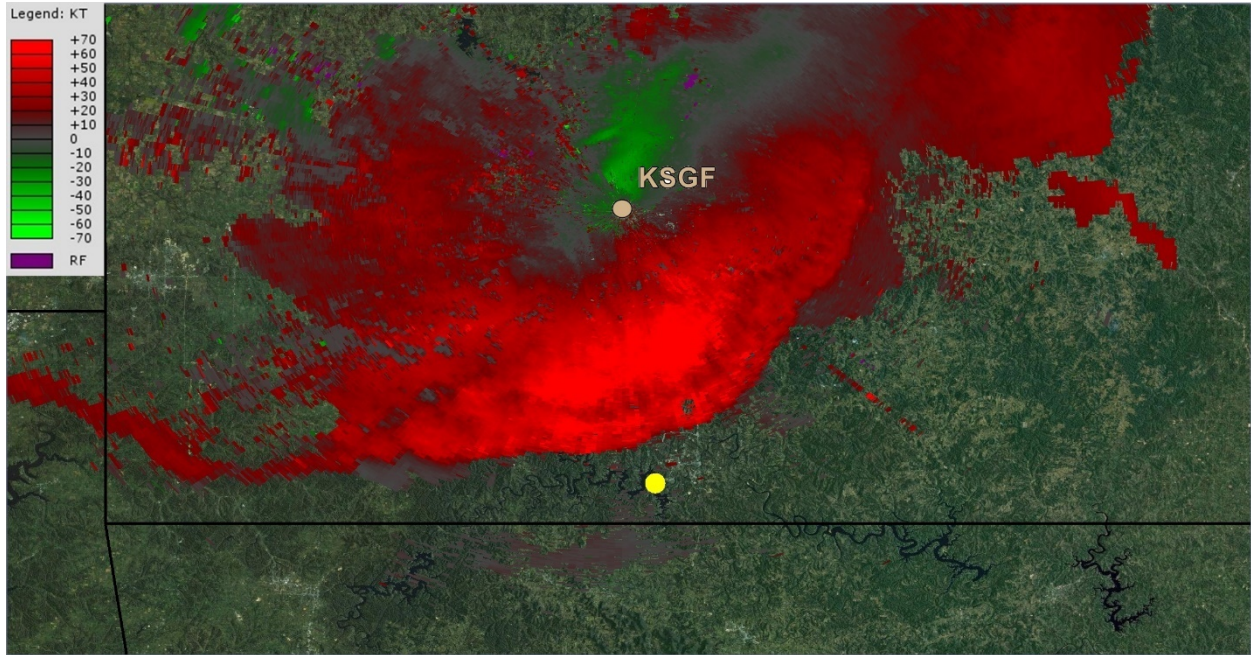
**Figure BL** – KSGF Level-III ~0.5° base velocity image from a sweep initiated about 1844 CDT. Accident site is denoted by the yellow circle.



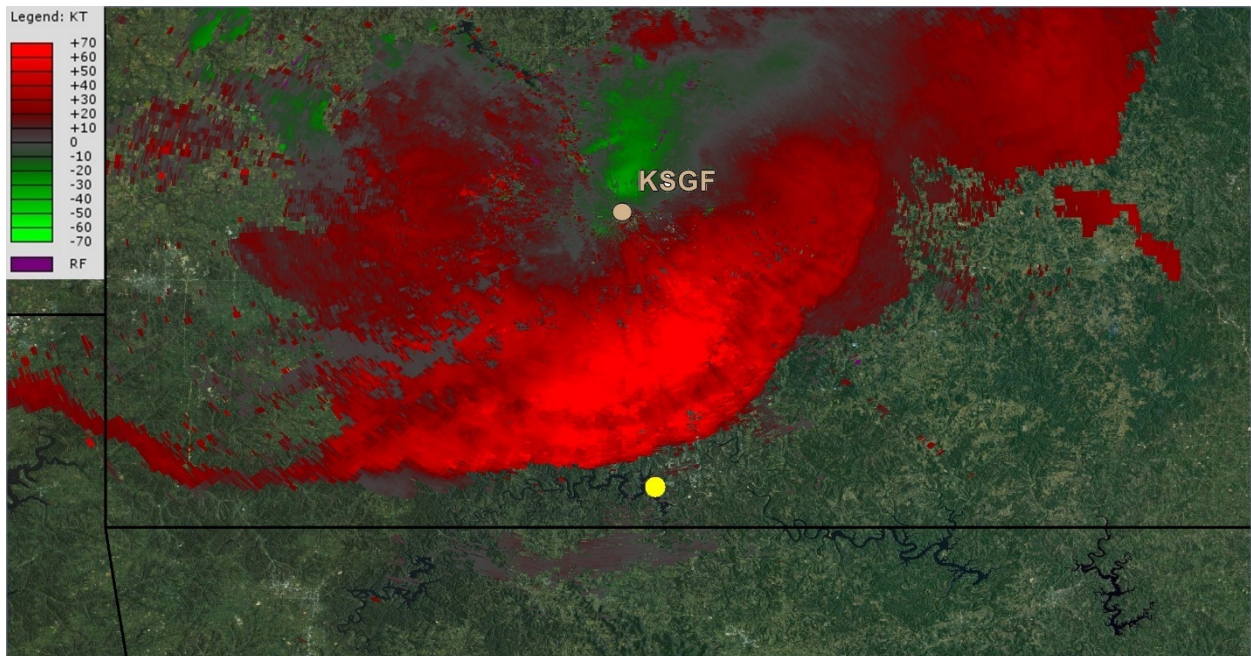
**Figure BM** – KSGF Level-III ~0.5° base velocity image from a sweep initiated about 1846 CDT. Accident site is denoted by the yellow circle.



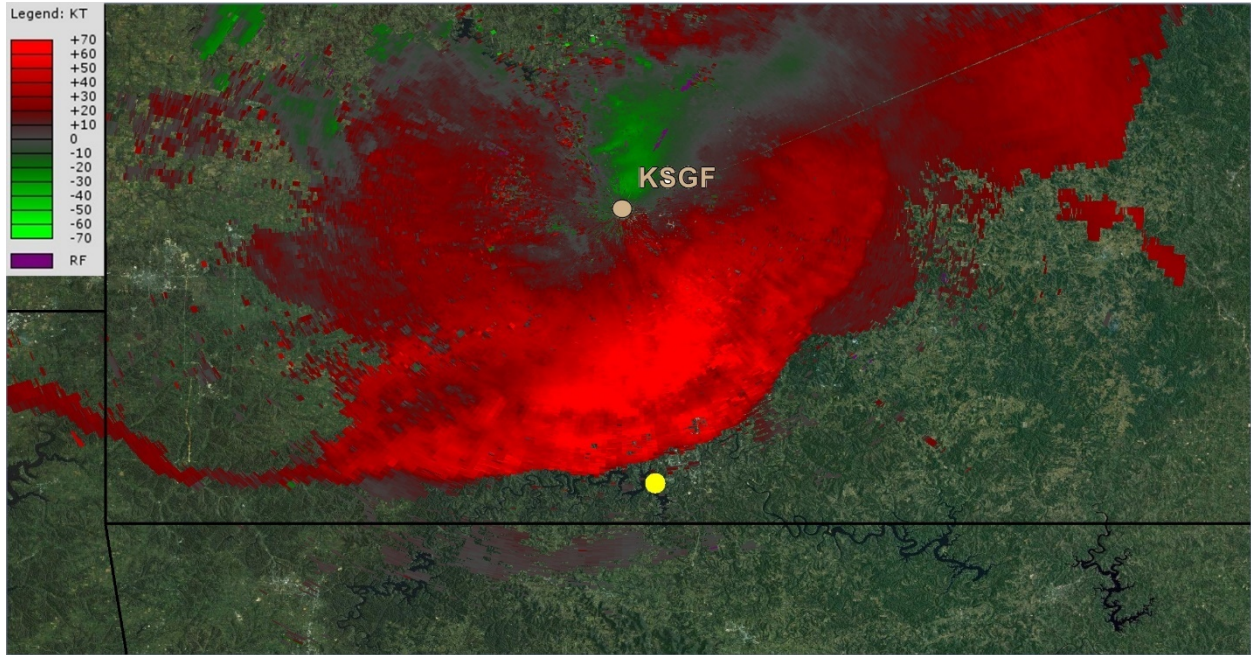
**Figure BN** – KSGF Level-III ~0.5° base velocity image from a sweep initiated about 1848 CDT. Accident site is denoted by the yellow circle.



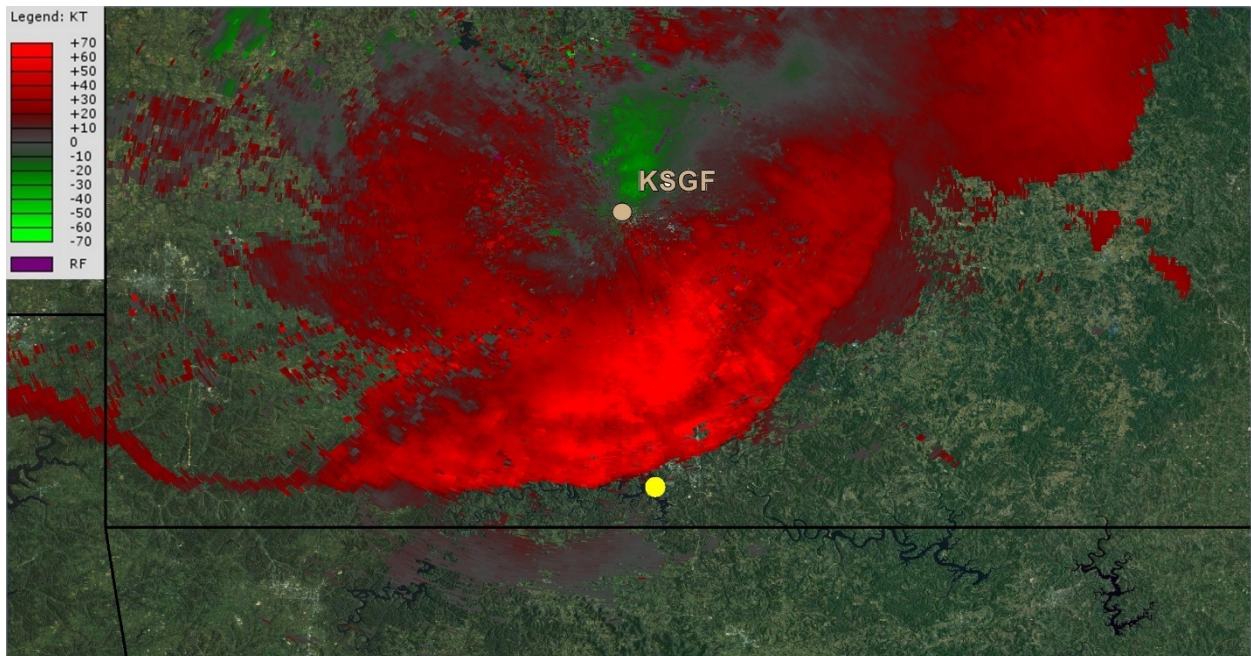
**Figure BO** – KSGF Level-III  $\sim 0.5^\circ$  base velocity image from a sweep initiated about 1850 CDT. Accident site is denoted by the yellow circle.



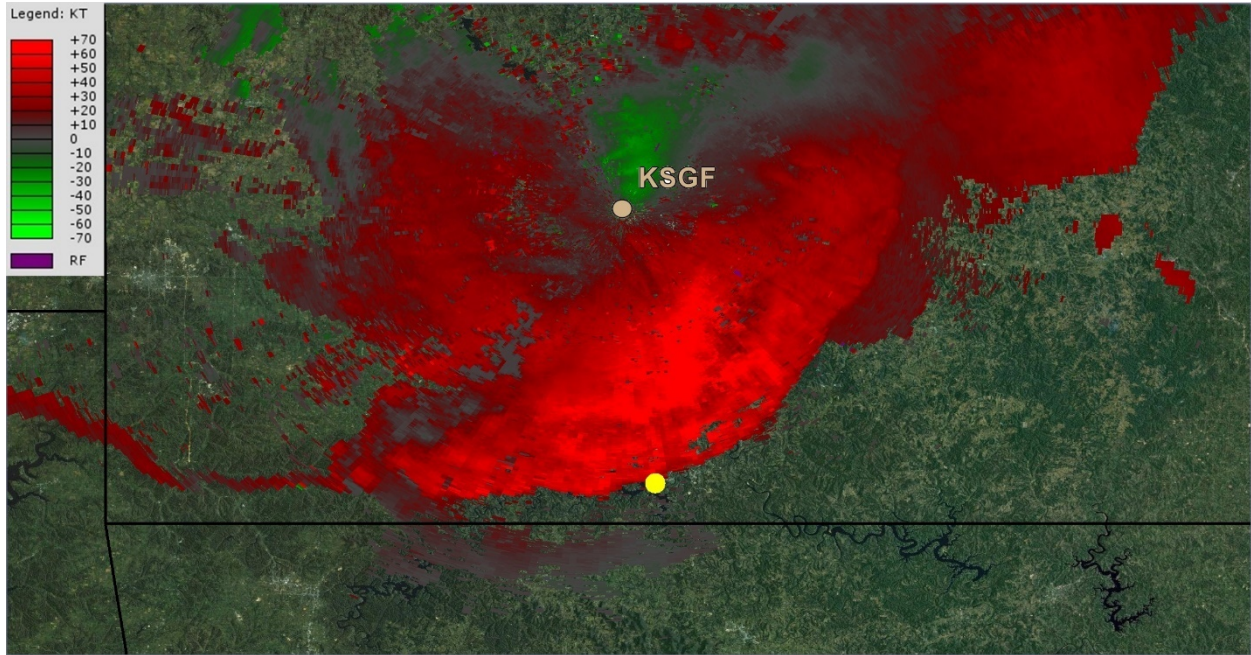
**Figure BP** – KSGF Level-III  $\sim 0.5^\circ$  base velocity image from a sweep initiated about 1852 CDT. Accident site is denoted by the yellow circle.



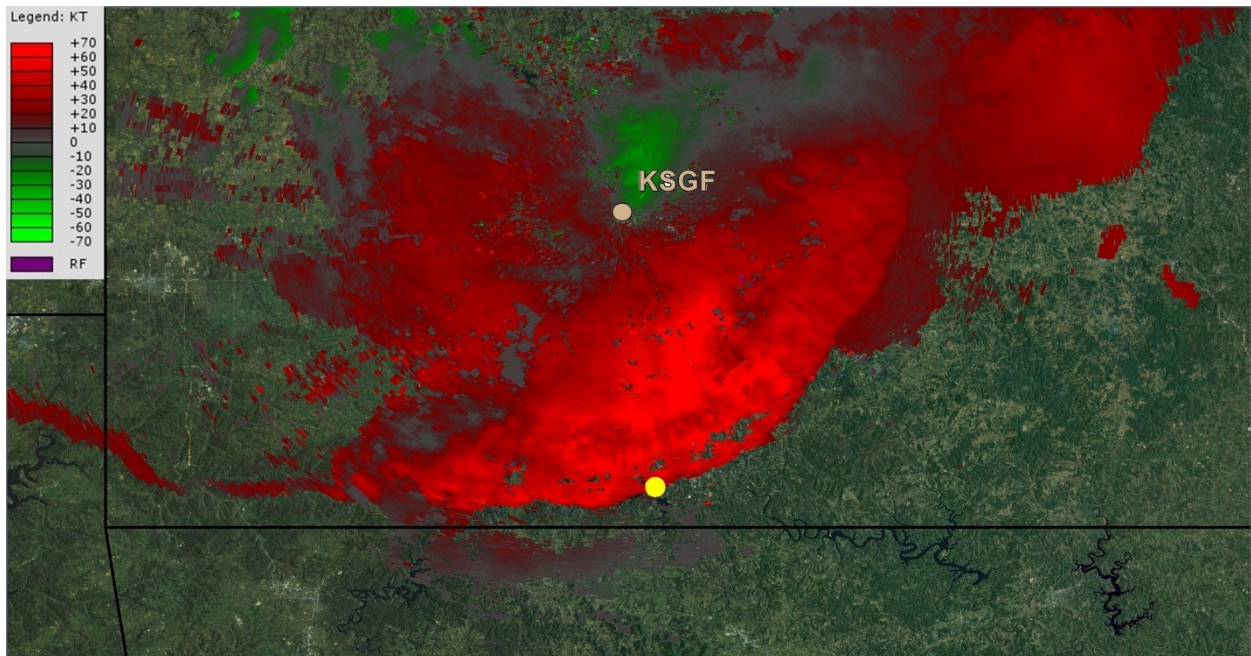
**Figure BQ** – KSGF Level-III ~0.5° base velocity image from a sweep initiated about 1854 CDT. Accident site is denoted by the yellow circle.



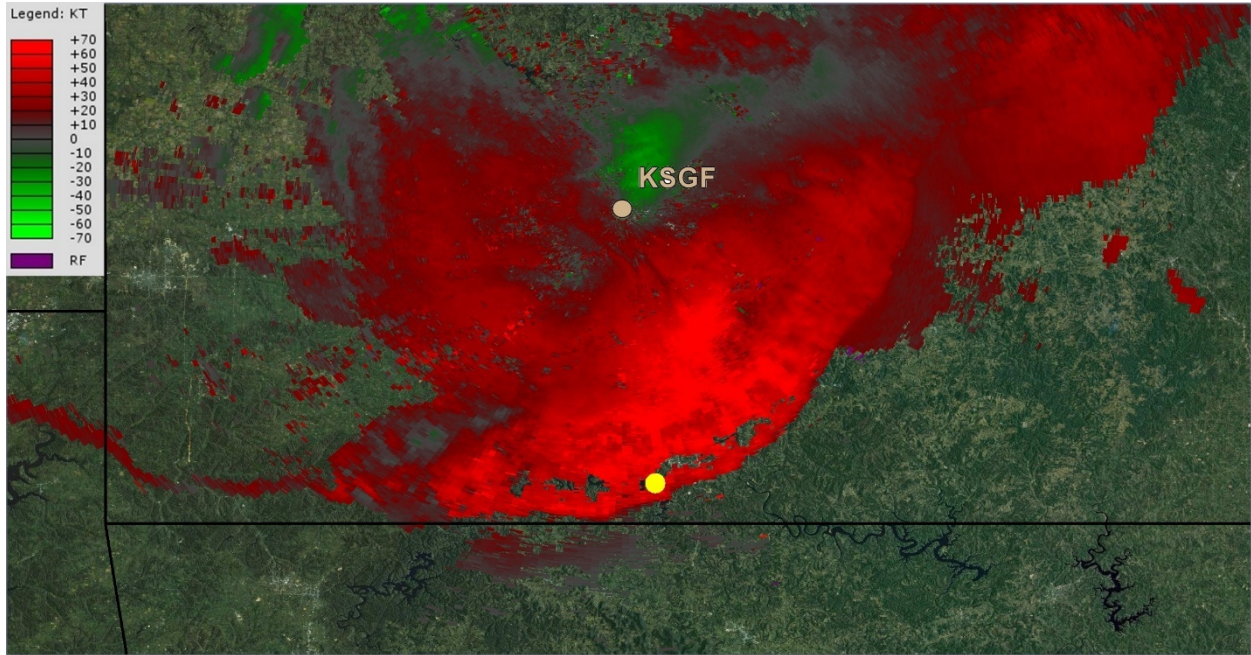
**Figure BR** – KSGF Level-III ~0.5° base velocity image from a sweep initiated about 1856 CDT. Accident site is denoted by the yellow circle.



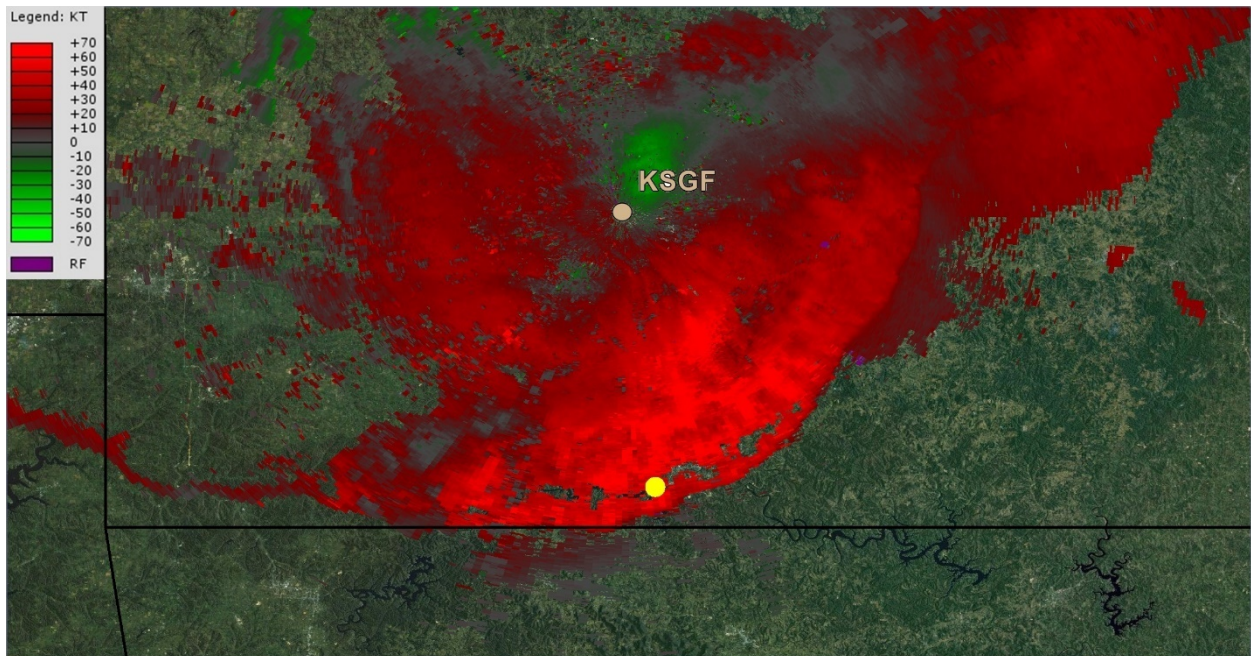
**Figure BS** – KSGF Level-III ~0.5° base velocity image from a sweep initiated about 1858 CDT. Accident site is denoted by the yellow circle.



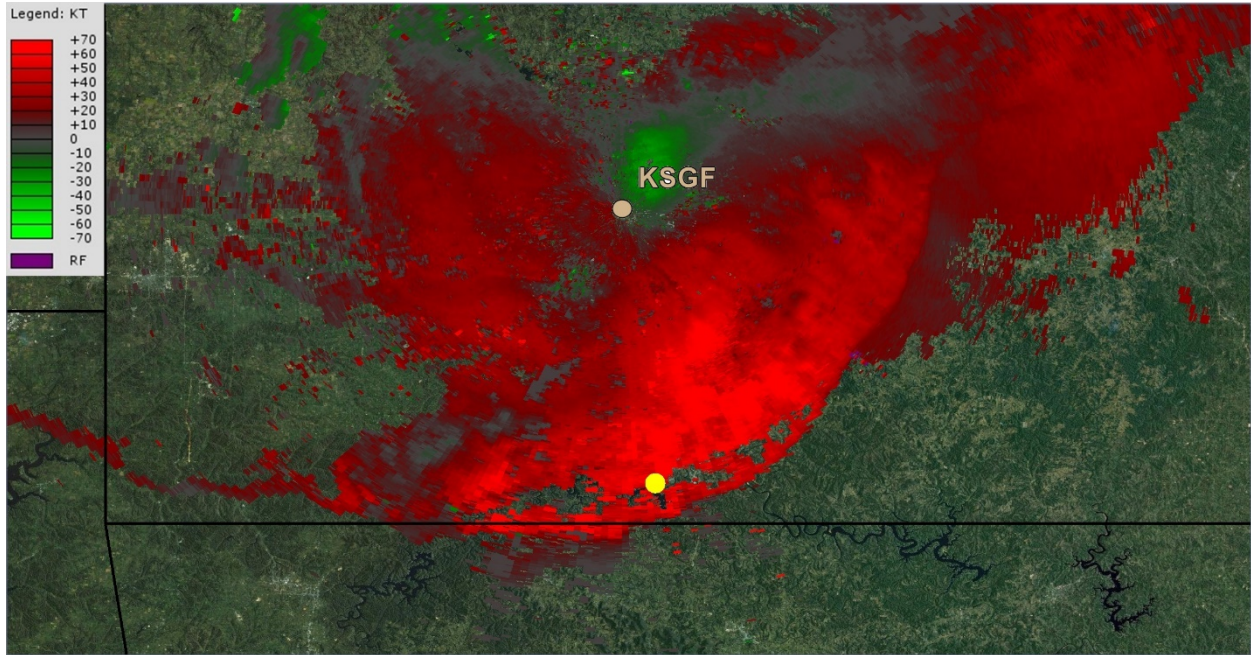
**Figure BT** – KSGF Level-III ~0.5° base velocity image from a sweep initiated about 1859 CDT. Accident site is denoted by the yellow circle.



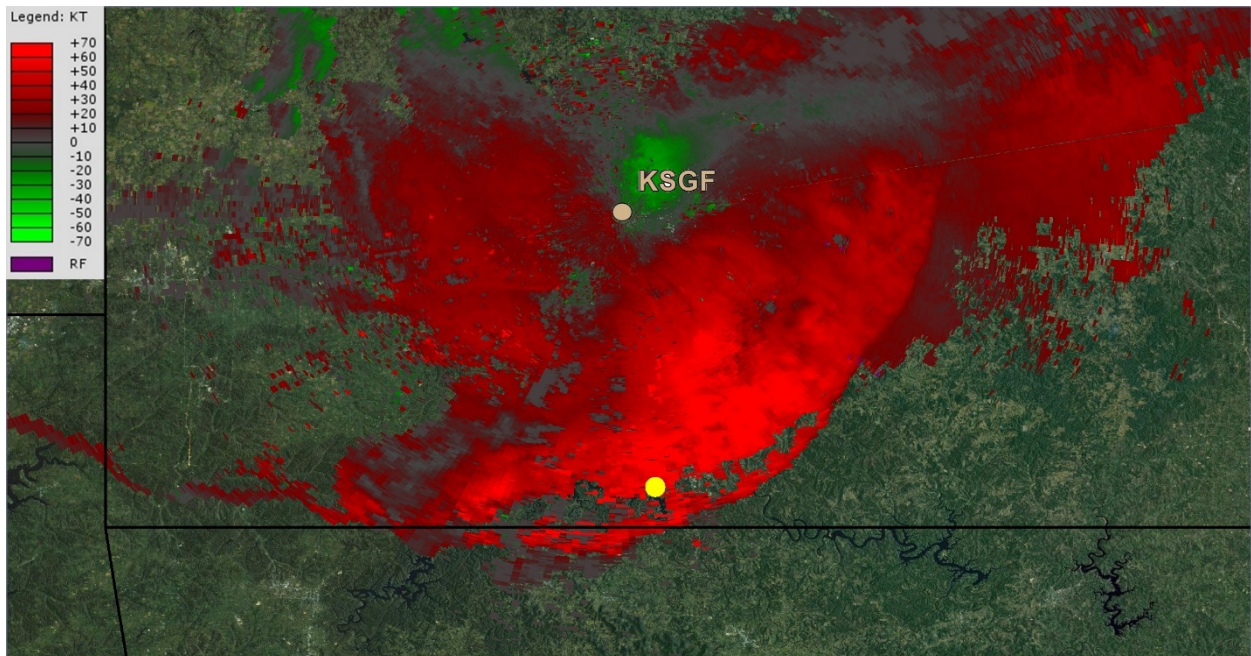
**Figure BU** – KSGF Level-III  $\sim 0.5^\circ$  base velocity image from a sweep initiated about 1901 CDT. Accident site is denoted by the yellow circle.



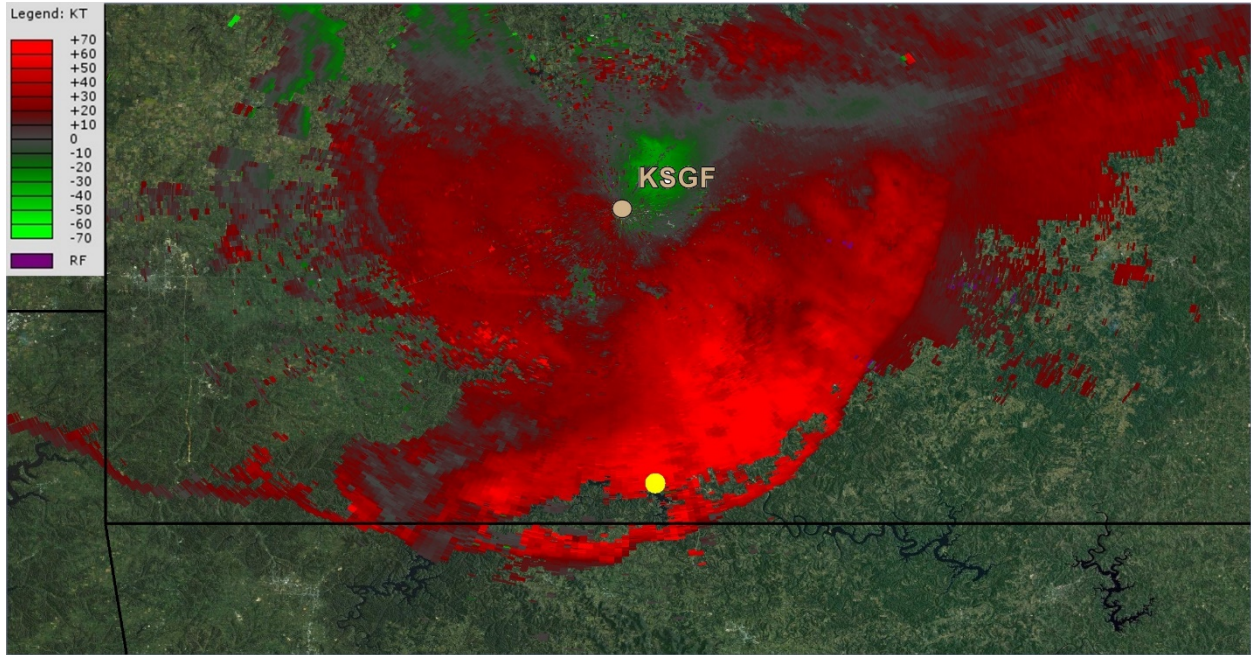
**Figure BV** – KSGF Level-III  $\sim 0.5^\circ$  base velocity image from a sweep initiated about 1903 CDT. Accident site is denoted by the yellow circle.



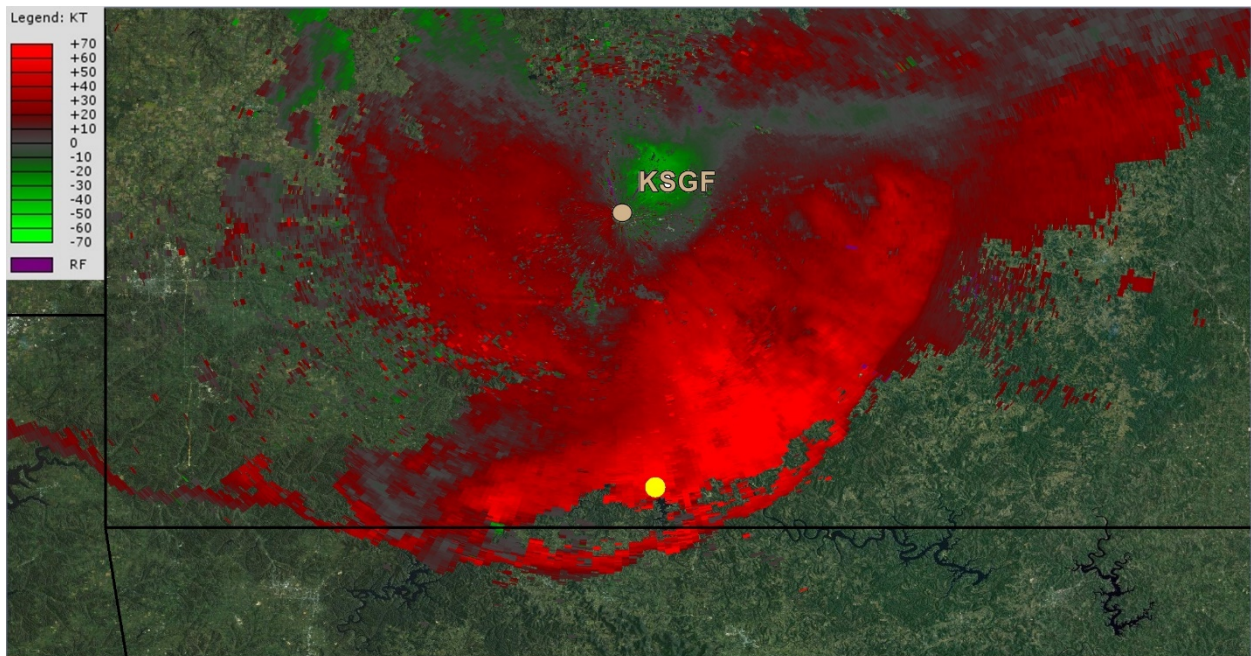
**Figure BW** – KSGF Level-III  $\sim 0.5^\circ$  base velocity image from a sweep initiated about 1905 CDT. Accident site is denoted by the yellow circle.



**Figure BX** – KSGF Level-III  $\sim 0.5^\circ$  base velocity image from a sweep initiated about 1907 CDT. Accident site is denoted by the yellow circle.

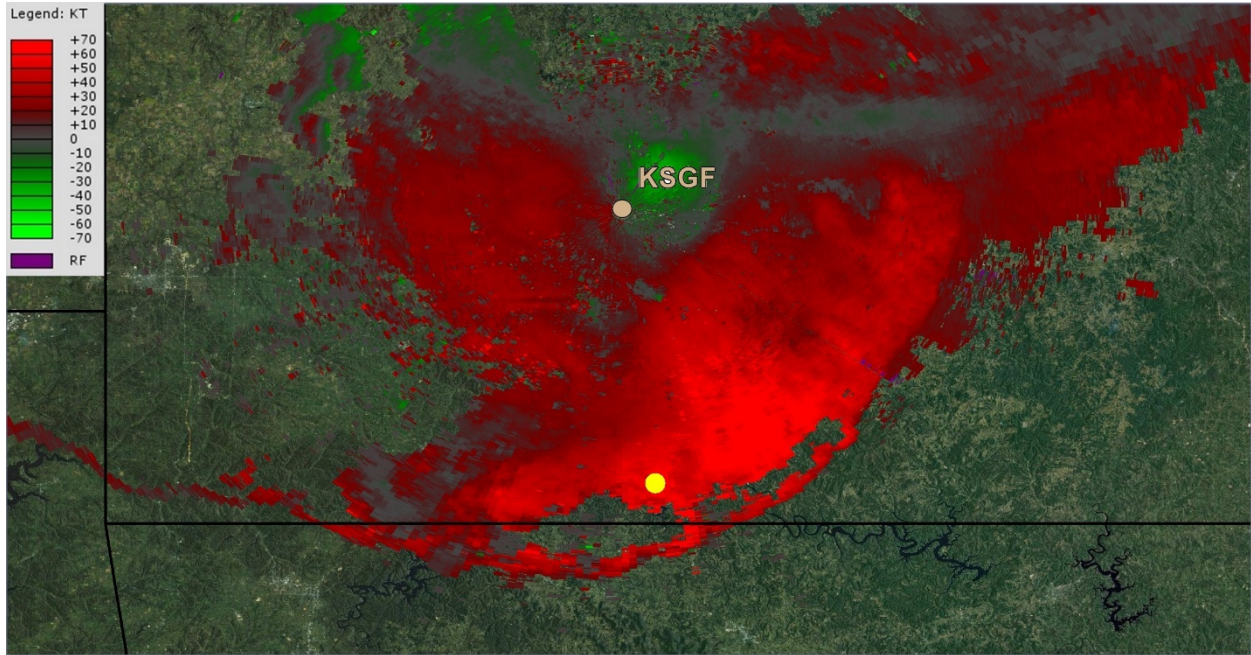


**Figure BY** – KSGF Level-III  $\sim 0.5^\circ$  base velocity image from a sweep initiated about 1909 CDT. Accident site is denoted by the yellow circle.

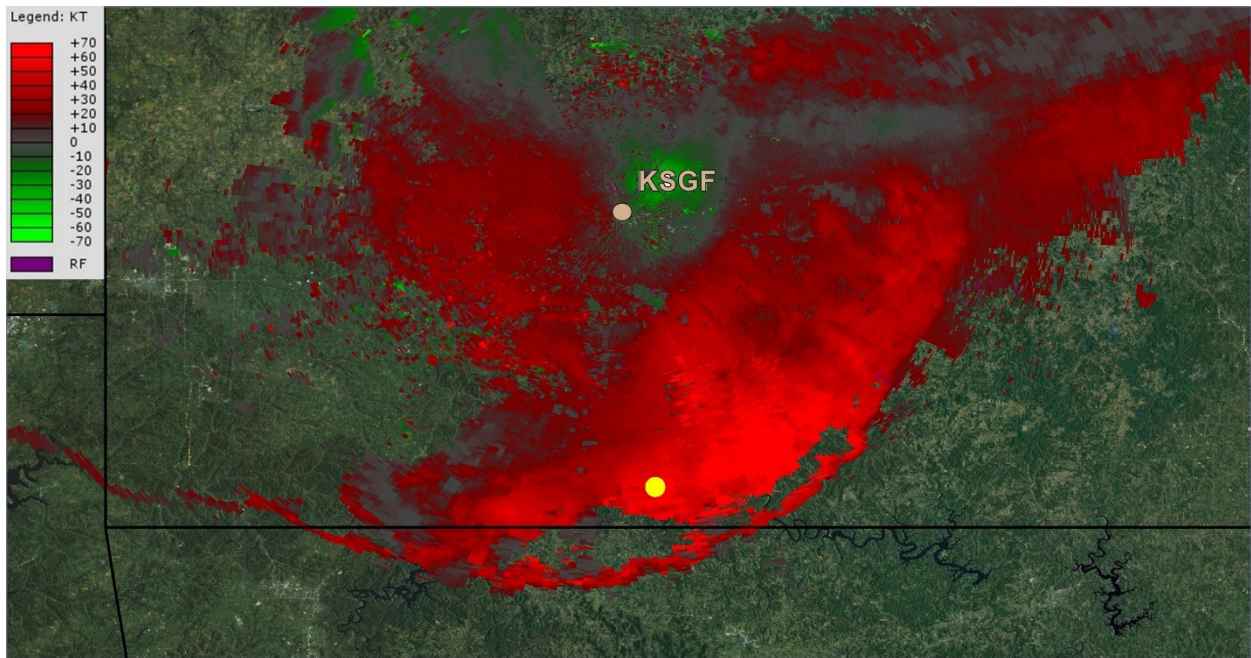


**Figure BZ** – KSGF Level-III  $\sim 0.5^\circ$  base velocity image from a sweep initiated about 1910 CDT. Accident site is denoted by the yellow circle.





**Figure CA** – KSGF Level-III ~0.5° base velocity image from a sweep initiated about 1912 CDT. Accident site is denoted by the yellow circle.



**Figure CB** – KSGF Level-III ~0.5° base velocity image from a sweep initiated about 1914 CDT. Accident site is denoted by the yellow circle.