

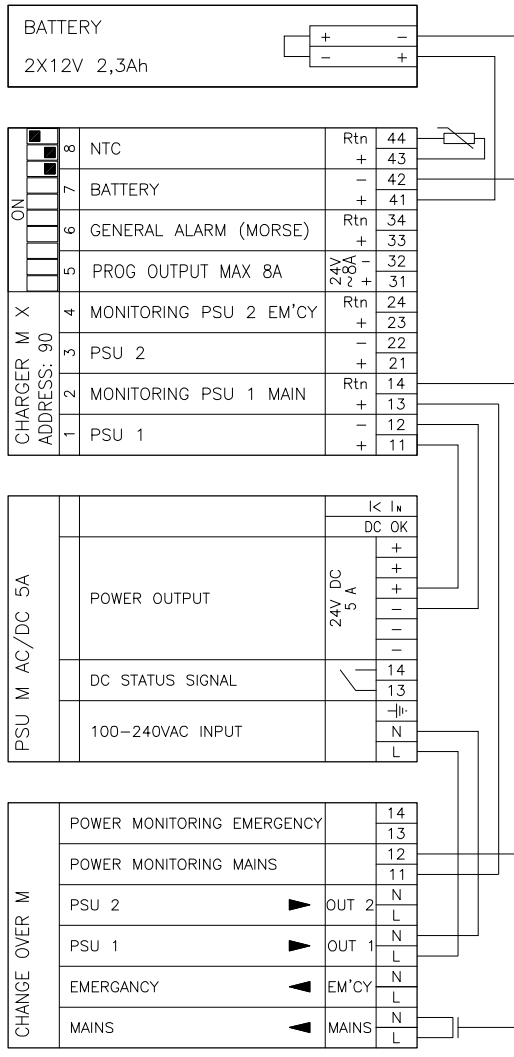
# DRAWING LIST

## CONNECTION DRAWING SALWICO CARGO


PAGE	DESCRIPTION	Rev	PAGE	DESCRIPTION	Rev
1	DRAWING LIST	A	16		—
2	POWER CONNECTIONS	A	17		—
3	I/O CONNECTIONS, RELAY CONNECTIONS	A	18		—
4	CONTROL PANEL	A	19		—
5	FIRE ZONES	A	20		—
6	BLOCK DIAGRAM	A	21		—
7	LOOP CONNECTIONS EXAMPLE	A	22		—
8		—	23		—
9		—	24		—
10		—	25		—
11		—	26		—
12		—	27		—
13		—	28		—
14		—	29		—
15		—	30		—

1 2 3 4 5 6 7 8

A B C D E F



POWER CONNECTIONS

Project: AMERICA CRUISE FERRIES		Scale	N/A	
Project No: CARIBBEAN FANTASY		Size	A3-4	
 Göteborg, Sweden www.consilium.se Copyright Consilium Marine AB		Design	FLMLE	Approved
		FLDSE	FLDSE	
Date: 7/2/2013		Drawing no.		

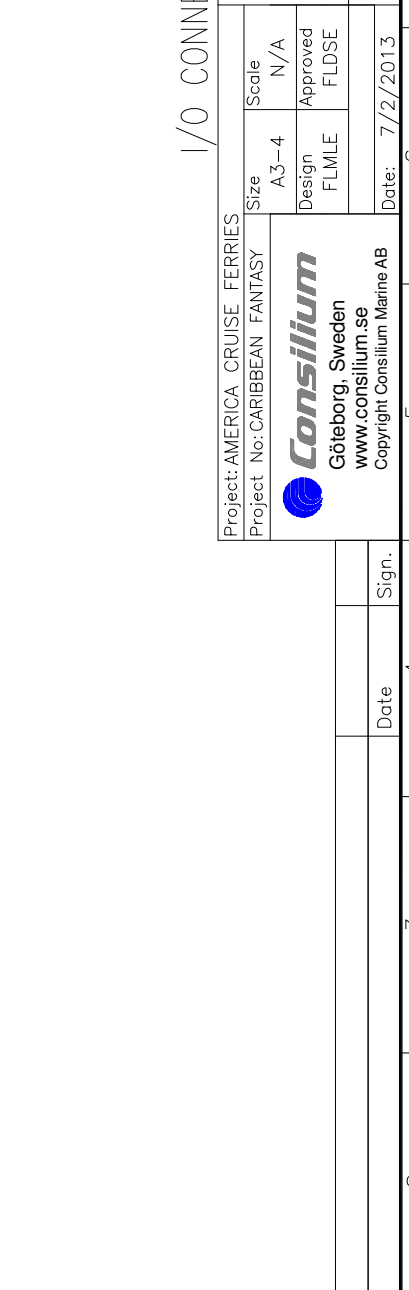
CONNECTION DRAWING  
FIRE DETECTION SYSTEM  
SALWICO FDS

Rev.	Revision note	Date	Sign.
-			

Ver. A  
Page 2

1 2 3 4 5 6 7 8

I/O M 700 ADDRESS: 58		RELAY M 8 ADDRESS: 72				RELAY M 8 ADDRESS: 73			
1	24V DC 0,7A	1	PROGRAMMABLE OUTPUT 230/5A	11	1	PROGRAMMABLE OUTPUT 230/5A	11	1	PROGRAMMABLE OUTPUT 230/5A
2	24V DC 0,7A	2	PROGRAMMABLE OUTPUT 230/5A	12	2	PROGRAMMABLE OUTPUT 230/5A	12	2	PROGRAMMABLE OUTPUT 230/5A
3	24V DC 0,7A	3	PROGRAMMABLE OUTPUT 230/5A	14	3	PROGRAMMABLE OUTPUT 230/5A	14	3	PROGRAMMABLE OUTPUT 230/5A
4	SPARE	4	PROGRAMMABLE OUTPUT 230/5A	21	4	PROGRAMMABLE OUTPUT 230/5A	21	4	PROGRAMMABLE OUTPUT 230/5A
5	24V DC 0,7A	5	PROGRAMMABLE OUTPUT 230/5A	22	5	PROGRAMMABLE OUTPUT 230/5A	22	5	PROGRAMMABLE OUTPUT 230/5A
6	SPARE	6	PROGRAMMABLE OUTPUT 230/5A	24	6	PROGRAMMABLE OUTPUT 230/5A	24	6	PROGRAMMABLE OUTPUT 230/5A
7	24V DC 0,7A	7	PROGRAMMABLE OUTPUT 230/5A	31	7	PROGRAMMABLE OUTPUT 230/5A	31	7	PROGRAMMABLE OUTPUT 230/5A
8	24V DC 0,7A	8	PROGRAMMABLE OUTPUT 230/5A	32	8	PROGRAMMABLE OUTPUT 230/5A	32	8	PROGRAMMABLE OUTPUT 230/5A



# I/O CONNECTIONS / RELAY CONNECTIONS

Project: AMERICA CRUISE FERRIES  
 Project No: CARIBBEAN FANTASY  
**Consilium**  
 Göteborg, Sweden  
[www.consilium.se](http://www.consilium.se)  
 Copyright Consilium Marine AB

Size	A3-4	Scale	N/A
Design	FLMLE	Approved	FLDSE
Date:	7/2/2013		

Ver. A Page 3  
 Drawing no. \_\_\_\_\_

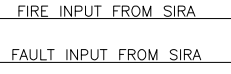
8 7 6 5 4 3 2 1

CONTROL/REPEATER M 4.3  
ADDRESS: 1

IN	1	SYNCHRONIZATION SIGNAL	SYNC	2
IN	2	BACKBONE BUS EXTERNAL IN - RS485	D-	4
			D+	3
1	1	POWER SUPPLY IN - 24VDC	V+	7
			V-	8
1	2	POWER SUPPLY IN - 24VDC	V+	9
			V-	10
OUT	2	BASIC BACKUP SIGNAL	BBU	11
		SYNCHRONIZATION SIGNAL	SYNC	12
1	1	BACKBONE BUS EXTERNAL OUT - RS485	D-	14
			D+	13
2	2	BACKBONE BUS EXTERNAL OUT - RS485	D-	16
			D+	15
1	1	POWER SUPPLY OUT - 24VDC	V+	17
			V-	18
2	2	POWER SUPPLY OUT - 24VDC	V+	19
			V-	20
4	4	ISOLATED SERIAL INTERFACE CHANNEL	RS485/422	D- 21 D+ 22 GND 23 D+ 24 D- 25
3	3	RELAY 30VDC/Max. 0,5A PROGRAMMABLE OUTPUT		26 27
4	4	RELAY 30VDC/Max. 0,5A PROGRAMMABLE OUTPUT		28 29 30
1	1	I/O70 PROGRAMMABLE OUTPUT		31 32
				33
2	2	I/O 70 PROGRAMMABLE OUTPUT		34 35
				36
				37
				38
				39
				40

BUS CON M 20

3	3	ISOLATED SERIAL INTERFACE CHANNEL	RS232/485	D- 11 Rs 12 Tx 13 CTS 14 D+ 23 D- 24
1	1	FAULT IN SIRA SYSTEM INPUT	24V 24V 70mA 70mA	21 22
2	2	FIRE IN SIRA SYSTEM INPUT	24V 24V 70mA 70mA	31 32
		BASIC BACKUP SIGNAL	BBU	33
		*Do not connect to this terminal		34
		BACKBONE BUS 1 RS485	D- 41 D+ 42	
1	1	BACKBONE BUS 2 RS485	D- 43 D+ 44	
2	2	RELAY 30VDC/Max. 1A PROGRAMMABLE OUTPUT		11 12
				13 14
				21 22
				23
4	4	ISOLATED SERIAL INTERFACE CHANNEL	RS422Rx/RS422Tx	D- 31 D+ 32 GND 33
				34 41 42 43 44



CONTROL PANEL

Project: AMERICA CRUISE FERRIES  
Project No: CARIBBEAN FANTASY

Scale: N/A  
Design: FLMLE  
Approved: FLDSE

Size: A3-4  
Date: 7/2/2013

**Consilium**  
Göteborg, Sweden  
www.consilium.se  
Copyright Consilium Marine AB

CONNECTION DRAWING  
FIRE DETECTION SYSTEM  
SALWICO FDS


Ver. A  
Page 4

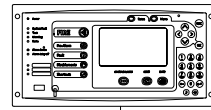
Rev.	Revision note	Date	Sign.
-			

I/O M 70 ADDRESS: 50				I/O M 70 ADDRESS: 51				I/O M 70 ADDRESS: 52				I/O M 70 ADDRESS: 53																		
1	2	3	4	1	2	3	4	1	2	3	4	1	2	3	4	1	2	3	4	5	6	7	8							
24V 70mA	24V 70mA	24V 70mA	24V 70mA	24V 70mA	24V 70mA	24V 70mA	24V 70mA	24V 70mA	24V 70mA	24V 70mA	24V 70mA	24V 70mA	24V 70mA	24V 70mA	24V 70mA	24V 70mA	24V 70mA	24V 70mA	24V 70mA	24V 70mA	24V 70mA	24V 70mA	24V 70mA							
1+	1-	2+	3+	3-	4+	4-	5+	5-	6+	6-	7+	7-	8+	8-	1+	1-	2+	2-	3+	3-	4+	4-	5+	5-	6+	6-	7+	7-	8+	8-
STAIRCASE 8	STAIRCASE 7	ELECTRICAL STAIRCASE	VENTS ROOM	ZONE 25	ZONE 26	STAIRCASE 9	ZONE 27	STAIRCASE 12	ZONE 28	STAIRCASE 13	ZONE 29	STAIRCASE 13	ZONE 30	GARAGE "C" STBD	ZONE 31	GARAGE "C" STBD	ZONE 32	GARAGE "C" STBD	ZONE 33	GARAGE "C" STBD	ZONE 34	GARAGE "C" STBD	ZONE 35	GARAGE "C" PORT	ZONE 36	GARAGE "C" STBD	ZONE 37	GARAGE "C" PORT	ZONE 38	GARAGE "C" STBD
STAIRCASE 8	STAIRCASE 7	ELECTRICAL STAIRCASE	VENTS ROOM	ZONE 25	ZONE 26	STAIRCASE 9	ZONE 27	STAIRCASE 12	ZONE 28	STAIRCASE 13	ZONE 29	STAIRCASE 13	ZONE 30	GARAGE "C" STBD	ZONE 31	GARAGE "C" PORT	ZONE 32	GARAGE "C" STBD	ZONE 33	GARAGE "C" PORT	ZONE 34	GARAGE "C" STBD	ZONE 35	GARAGE "C" PORT	ZONE 36	GARAGE "C" STBD	ZONE 37	GARAGE "C" PORT	ZONE 38	GARAGE "C" STBD

I/O M 70 ADDRESS: 54				I/O M 70 ADDRESS: 55				I/O M 70 ADDRESS: 56				I/O M 70 ADDRESS: 57																			
1	2	3	4	1	2	3	4	1	2	3	4	1	2	3	4	1	2	3	4	5	6	7	8								
24V 70mA	24V 70mA	24V 70mA	24V 70mA	24V 70mA	24V 70mA	24V 70mA	24V 70mA	24V 70mA	24V 70mA	24V 70mA	24V 70mA	24V 70mA	24V 70mA	24V 70mA	24V 70mA	24V 70mA	24V 70mA	24V 70mA	24V 70mA	24V 70mA	24V 70mA	24V 70mA	24V 70mA								
1+	1-	2+	3+	3-	4+	4-	5+	5-	6+	6-	7+	7-	8+	8-	1+	1-	2+	2-	3+	3-	4+	4-	5+	5-	6+	6-	7+	7-	8+	8-	
GARAGE "B" STBD	GARAGE "B" PORT	GARAGE "B" STBD	GARAGE "B" PORT	ZONE 57	ZONE 58	GARAGE "B" PORT	ZONE 59	GARAGE "B" THRUSTER	ZONE 58	GARAGE "B" PORT	ZONE 57	GARAGE "B" STBD	ZONE 56	GARAGE "B" PORT	ZONE 55	GARAGE "B" PORT	ZONE 54	GARAGE "B" STBD	ZONE 56	THRUSTER AFT	STEERING GEAR ROOM	ZONE 66	STEERING GEAR ROOM	ZONE 67	SEPTIC STBD	ZONE 68	SEPTIC PORT	ZONE 69	STABILIZER PORT	ZONE 70	STABILIZER PORT
GARAGE "B" STBD	GARAGE "B" PORT	GARAGE "B" STBD	GARAGE "B" PORT	ZONE 57	ZONE 58	GARAGE "B" PORT	ZONE 59	GARAGE "B" THRUSTER	ZONE 58	GARAGE "B" PORT	ZONE 57	GARAGE "B" STBD	ZONE 56	GARAGE "B" PORT	ZONE 55	GARAGE "B" PORT	ZONE 54	GARAGE "B" STBD	ZONE 56	THRUSTER AFT	STEERING GEAR ROOM	ZONE 66	STEERING GEAR ROOM	ZONE 67	SEPTIC STBD	ZONE 68	SEPTIC PORT	ZONE 69	STABILIZER PORT	ZONE 70	STABILIZER PORT

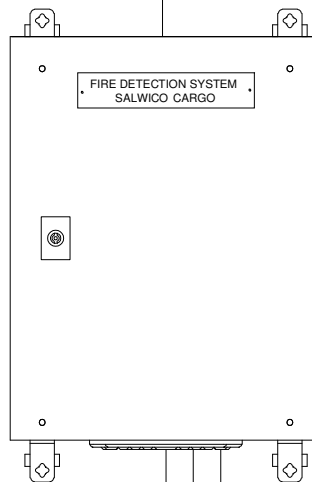
FIRE ZONES

Project: AMERICA CRUISE FERRIES		Scale: N/A		Date: 7/2/2013		Ver. A		Page 5			
Project No: CARIBBEAN FANTASY		Design: FLMLE		Approved: FLDSE		Drawing no.		8			
 Göteborg, Sweden <a href="http://www.consilium.se">www.consilium.se</a> Copyright Consilium Marine AB		CONNECTION DRAWING		FIRE DETECTION SYSTEM		SALWICO FDS		5			
		Sign.		Date						7	
		Rev.		Revision note						1	



CONTROL PANEL  
BRIDGE


RIBBON CABLES TO  
BUSCON M10 AND M20



FIRE ALARM CENTRAL  
BRIDGE

FIRE LOOPS  
I/O & RELAY OUTPUTS  
MAINS 220 VAC

BLOCK DIAGRAM

Project: AMERICA CRUISE FERRIES		Size A3-4		Scale N/A		CONNECTION DRAWING FIRE DETECTION SYSTEM SALWICO FDS	
Project No: CARIBBEAN FANTASY		Design FLMLE		Approved FLDSE			
 Göteborg, Sweden www.consilium.se Copyright Consilium Marine AB		Date: 7/2/2013		Drawing no.		Ver. A	Page 6
		Date: 7/2/2013		Drawing no.		Ver. A	Page 6

Rev.	Revision note	Date	Sign.
-			

1 2 3 4 5 6 7 8

A

B

C

D

E

F


I/O M 70							
ADDRESS:							
1	2	3	4	5	6	7	8
24V 70mA	24V 70mA	24V 70mA	24V 70mA	24V 70mA	24V 70mA	24V 70mA	24V 70mA
1+	2+	3+	4+	5+	6+	7+	8+

Fire detection loop cable



End of line resistor

LOOP CONNECTIONS EXAMPLE

Project: AMERICA CRUISE FERRIES		Size A3-4	Scale N/A	CONNECTION DRAWING FIRE DETECTION SYSTEM SALWICO FDS	
Project No: CARIBBEAN FANTASY		Design FLMLE	Approved FLDSE		
 Göteborg, Sweden www.consilium.se Copyright Consilium Marine AB		Drawing no.		Ver.	Page
		Date: 7/2/2013		A	7

Rev.	Revision note	Date	Sign.
-			

1 2 3 4 5 6 7 8