

Lub Oil Main System		
Pressure before engine	[bar]	5.1
Temperature before engine	[° C]	48
Pressure before T/C	[bar]	2.1
Temperature after T/C	[° C]	52
Pressure before engine	[bar]	3,0
Temperature before engine	[° C]	72
Temperature after Cyl 1	[° C]	72
Temperature after Cyl 2	[° C]	75
Temperature after Cyl 3	[° C]	74
Temperature after Cyl 4	[° C]	75
Temperature after Cyl 5	[° C]	75
Temperature after Cyl 6	[° C]	75
Temperature after Cyl 7	[° C]	75
Temperature after Cyl 8	[° C]	75
Intake Air		
Engine Room ambient temp.	[° C]	
Temp. Aft. charge air cooler	[° C]	38.5
Δ pressure inlet air filter	[mbar]	N/A
Δ pressure charge air cooler	[mbar]	N/A
Governor		
Load Governor	Scale	5.5
Fuel Pump Index 1	[mm]	48
Fuel Pump Index 2	[mm]	44
Fuel Pump Index 3	[mm]	45
Fuel Pump Index 4	[mm]	44
Fuel Pump Index 5	[mm]	44
Fuel Pump Index 6	[mm]	45
Fuel Pump Index 7	[mm]	45
Fuel Pump Index 8	[mm]	43
Average	[mm]	44.4

Exhaust Gas		
Exhaust gas press after T/C	[mmHg]	
Turbo / Charger speed	[rpm]	
Temp after Cyl 1	[° C]	375
Temp after Cyl 2	[° C]	370
Temp after Cyl 3	[° C]	372
Temp after Cyl 4	[° C]	381
Temp after Cyl 5	[° C]	405
Temp after Cyl 6	[° C]	398
Temp after Cyl 7	[° C]	401
Temp after Cyl 8	[° C]	386
Average	[° C]	386
Temp before T/C	[° C]	417
Temp after T/C	[° C]	387
Ignition Pressures		
Cylinder 1	[bar]	78
Cylinder 2	[bar]	81
Cylinder 3	[bar]	79
Cylinder 4	[bar]	82
Cylinder 5	[bar]	79
Cylinder 6	[bar]	80
Cylinder 7	[bar]	76
Cylinder 8	[bar]	88
Average	[bar]	80.4
Fuel		
Type		
Pressure before engine	[bar]	6
Temperature after preheater	[° C]	110
Viscosity after preheater	[cSt]	
Temperature service tank	[° C]	82
Temperature before engine	[° C]	

Main Bearing Temperature		
Lube Oil Inlet	[° C]	62
Main Bearing 1	[° C]	66
Main Bearing 2	[° C]	63
Main Bearing 3	[° C]	68
Main Bearing 4	[° C]	63
Main Bearing 5	[° C]	68
Main Bearing 6	[° C]	65
Main Bearing 7	[° C]	67
Main Bearing 8	[° C]	66
Main Bearing 9	[° C]	68
Main Bearing 10	[° C]	
Average	[° C]	65.6
Splash Oil Monitoring		
Lube Oil Inlet	[° C]	
Cylinder 1	[° C]	57
Cylinder 2	[° C]	57.7
Cylinder 3	[° C]	57.9
Cylinder 4	[° C]	57.4
Cylinder 5	[° C]	57.2
Cylinder 6	[° C]	57.9
Cylinder 7	[° C]	56.4
Cylinder 8	[° C]	57.3
Average	[° C]	57.35
Charge Air Cooling Water		
Press before intercooler	[bar]	
Temp. before air cooler	[° C]	
Temp. after air cooler	[° C]	

Filters		
Consumption Lube Oil		
Lube Oil filter flush interval	[1/hr]	1/2h
Consumption Fuel Oil		

Nozzle Cooling Media		
Pressure before engine	[bar]	2.9
Temperature before engine	[° C]	78
Temperature before cooler	[° C]	80

Power		
Engine actual speed	[rpm]	350
Engine Nominal Output	[HP]	
Engine Actual Output	[HP]	
Engine Actual Output	[%]	

Vessel's speed

Sea:

Wind speed:

Wind direction:

Draught Fwd: [M]

Draught Mid: [M]

Draught Aft: [M]

IGOR SHEVCHENKO

First Engineer - Name and Signature

Date:

Place:

IAKOVOS PRINTEZIS

Chief Engineer - Name and Signature

Superintendent's assesment and comments:

Date: **21 JAN 2016**

Place: **SAN JUAN, PR**

IAKOVOS PRINTEZIS

Ship Superintendent - Name and Signature

Engine operating values



MAN Diesel | PrimeServ

Author

Name:	1st Engineer
Department:	Engine
Date:	21.01.2016

Customer

Name:	BAJA FERRIES
Destination:	SANTO DOMINGO -SAN JUAN

Engine

Plant/ vessel:	M/V CARIBBEAS FANTASY
Engine type:	MAN B&W 8L 58/64
Engine No.:	M.E. STBD

Date		22.12.2015	Consumption Fuel oil		N/A
Time		19:30:00	Fuel oil filter flush.Interv.	[1/h]	1 time per 2 h
Run. hours <= 100%	[h]		Exhaust gas		
Run. hours > 100%	[h]			A	B
Total running hours	[h]			local	remote
Governor		A	B	Exh. gas press. aft. Tc	[mm]
Load governor	scale	5.5		Temp. after cyl. 1	[°C]
Fuel pump index 1	[mm]	48		Temp. after cyl. 2	[°C]
Fuel pump index 2	[mm]	44		Temp. after cyl. 3	[°C]
Fuel pump index 3	[mm]	45		Temp. after cyl. 4	[°C]
Fuel pump index 4	[mm]	44		Temp. after cyl. 5	[°C]
Fuel pump index 5	[mm]	44		Temp. after cyl. 6	[°C]
Fuel pump index 6	[mm]	45		Temp. after cyl. 7	[°C]
Fuel pump index 7	[mm]	45		Temp. after cyl. 8	[°C]
Fuel pump index 8	[mm]	43		Temp. after cyl. 9	[°C]
Fuel pump index 9	[mm]	42		Average	[°C]
Average	[mm]	44.4		Before turbocharger	[°C]
Filters				After turbocharger	[°C]
Consumption Lube oil				n tc A/B	[rpm]
Lube oil filter flush.Interv.	[1/h]	1 time per 2h			

Remarks:

Engine operating values



MAN Diesel | PrimeServ

Engine			
Plant/ vessel:	M/V CARIBBEAS FANTASY		
Engine type:	MAN B&W 8L 58/64		
Engine no.:	M.E. STBD	Operating hours:	
Ignition pressures		A	B
Cylinder 1	[bar]	78	
Cylinder 2	[bar]	81	
Cylinder 3	[bar]	79	
Cylinder 4	[bar]	82	
Cylinder 5	[bar]	79	
Cylinder 6	[bar]	80	
Cylinder 7	[bar]	76	
Cylinder 8	[bar]	88	
Cylinder 9	[bar]		
Average	[bar]	80.4	
Power			
Geno power	[kWe]		
Engine power	[kW]		
Cos phi.			
Voltage	[V]		
Current	[A]		
Engine power	[%]		
Engine n	[rpm]	350	
Intake air		A	B
Ambient temperature	[°C]		
Temp.aft.ch.air cooler	[°C]	38.5	
Press.aft.ch.air cooler	[bar]	0.7	
Delta press.ch.air cooler	[mbar]		
Delta press.inlet air filter	[mbar]		
Suction press.bef.tc	[mbar]		
Blow-by flap		<input type="checkbox"/> on <input type="checkbox"/> off	
Charge air preheating		<input type="checkbox"/> on <input checked="" type="checkbox"/> off	
Crankcase pressure [mm/H ₂ O]			
Fuel			
Press.before engine	[bar]	6.0	
Temp.after preheater	[°C]	110	
Viscosity aft.preheat.	[cSt]		
Temp. service tank	[°C]	82	
Temp. Bef. Engine	[°C]		
Nozzle cooling water			
Press.bef.engine	[bar]	2.9	
Temp.bef.engine	[°C]	78	
Temp. Bef. Cooler	[°C]	80	
Lub oil main system		A	B
Press.bef. engine	[bar]	5.0	
Temp.bef. engine	[°C]	45	
Press.bef.tc	[bar]	2.0	
Temp.after tc A/B	[°C]	n/a	n/a
Jacket cooling water (HT)			
Press.bef.engine	[bar]	3.6	
Temp.bef.engine	[°C]	69	
Temp.aft.engine	[°C]	80	
Charge air cooling water (HT + LT)			
Press.bef.intercooler	[bar]		
Temp.bef.intercooler HT	[°C]		
Temp.aft.intercooler HT	[°C]		
Temp.bef.intercooler LT	[°C]		
Temp.aft.intercooler LT	[°C]		
Bearing temperature			
OI	[°C]	62.0	
I	[°C]	66.0	
II	[°C]	63.0	
III	[°C]	68.0	
IV	[°C]	63.0	
V	[°C]	68.0	
VI	[°C]	65.0	
VII	[°C]	67.0	
VIII	[°C]	66.0	
IX	[°C]	68.0	
X	[°C]		
Average	[°C]	65.60	
Splash oil temperature			
Cyl. 1	[°C]	57.0	
Cyl. 2	[°C]	57.7	
Cyl. 3	[°C]	57.9	
Cyl. 4	[°C]	57.4	
Cyl. 5	[°C]	57.2	
Cyl. 6	[°C]	57.9	
Cyl. 7	[°C]	56.4	
Cyl. 8	[°C]	57.3	
Cyl. 9	[°C]		
Average	[°C]	57.35	

Engine operating values

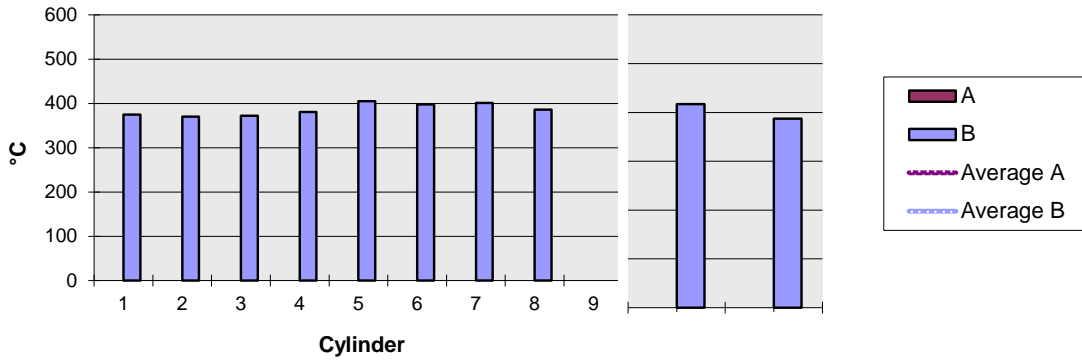


MAN Diesel | PrimeServ

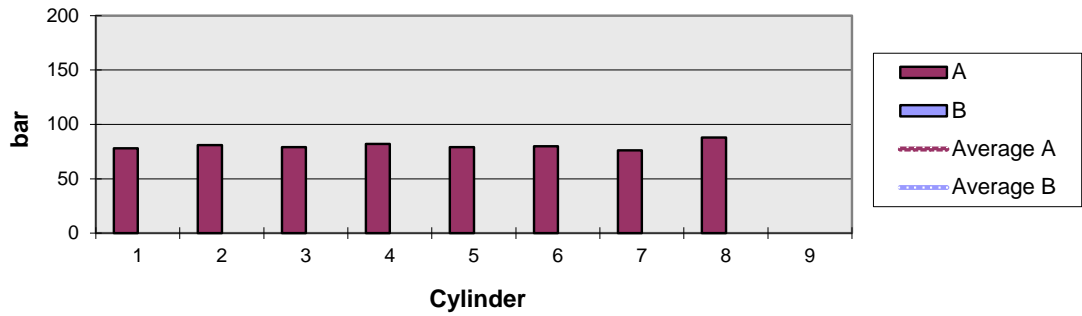
Engine

Plant/ vessel:	M/V CARIBBEAS FANTASY		
Engine type:	MAN B&W 8L 58/64		
Engine no.:	M.E. STBD	Operating hours:	

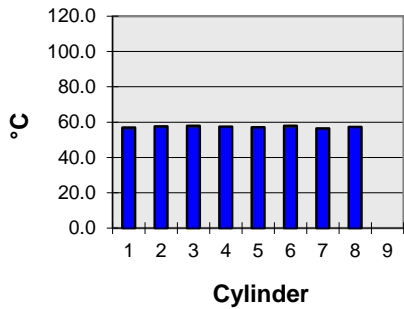
Exhaust gas temperature



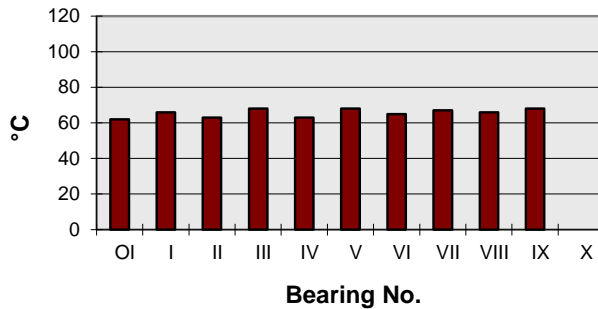
Ignition pressure



Splash oil temperature



Bearing temperature



BearingTemperatureAverage	BearingTemperatureI	BearingTemperatureII	BearingTemperatureIII
65.6	66	63	68

BearingTemperatureIV BearingTemperatureIX BearingTemperatureOI BearingTemperatureV
63 68 62 68

BearingTemperatureVI BearingTemperatureVII BearingTemperatureVIII BearingTemperatureX
65 67 66 0

ChargeAirCoolingWaterHT_LT_PressBeforeIntercooler
0

ChargeAirCoolingWaterHT_LT_TempAfterIntercoolerHT_A
0

ChargeAirCoolingWaterHT_LT_TempAfterIntercoolerHT_B
0

ChargeAirCoolingWaterHT_LT_TempAfterIntercoolerLT_A
0

ChargeAirCoolingWaterHT_LT_TempAfterIntercoolerLT_B
0

ChargeAirCoolingWaterHT_LT_TempBeforeIntercoolerHT_A
0

ChargeAirCoolingWaterHT_LT_TempBeforeIntercoolerHT_B
0

ChargeAirCoolingWaterHT_LT_TempBeforeIntercoolerLT_A
0

ChargeAirCoolingWaterHT_LT_TempBeforeIntercoolerLT_B ConsumptionFuelOil
0 N/A

ConsumptionLubeOil	CosPhi	Current	CustomerDestination	CustomerName	Date
0	0	0	SANTO DOMINGO -S	BAJA FERRIES	21.01.2016

DateMeasuring	DateTimeMeasuring	Department	EngineNo	EnginePower	EnginePowerPercent
22.12.2015	#VALUE!	Engine	M.E. STBI	0	0

EngineRPM	Enginetype	ExhGasAfterTurbochargerA	ExhGasAfterTurbochargerB
350	MAN B&W {	0	387

ExhGasAverageA	ExhGasAverageB	ExhGasBeforeTurbochargerA	ExhGasBeforeTurbochargerB
	386	0	417

ExhGasNtcAB_A	ExhGasNtcAB_B	ExhGasPressAftTcA	ExhGasPressAftTcB
0	7100	0	0

ExhGasTempAfterCyl1A	ExhGasTempAfterCyl1B	ExhGasTempAfterCyl2A
0	375	0

ExhGasTempAfterCyl2B	ExhGasTempAfterCyl3A	ExhGasTempAfterCyl3B
370	0	372

ExhGasTempAfterCyl4A	ExhGasTempAfterCyl4B	ExhGasTempAfterCyl5A
0	381	0

ExhGasTempAfterCyl5B	ExhGasTempAfterCyl6A	ExhGasTempAfterCyl6B
405	0	398

ExhGasTempAfterCyl7A ExhGasTempAfterCyl7B ExhGasTempAfterCyl8A
0 401 0

ExhGasTempAfterCyl8B	ExhGasTempAfterCyl9A	ExhGasTempAfterCyl9B	FuelOilFilterFlushInterv
386	0		0 1 time per 2 h

FuelPressBeforeEngine	FuelTempAfterPreheater	FuelTempBeforeEngine	FuelTempServiceTank
6	110	0	82

FuelViscosityAfterPreheat	GenoPower	Governor_AverageA	Governor_AverageB
0	0	44.44444444	

Governor_FuelPumpIndex1A Governor_FuelPumpIndex1B Governor_FuelPumpIndex2A
48 0 44

Governor_FuelPumpIndex2B Governor_FuelPumpIndex3A Governor_FuelPumpIndex3B
0 45 0

Governor_FuelPumpIndex4A Governor_FuelPumpIndex4B Governor_FuelPumpIndex5A
44 0 44

Governor_FuelPumpIndex5B Governor_FuelPumpIndex6A Governor_FuelPumpIndex6B
0 45 0

Governor_FuelPumpIndex7A Governor_FuelPumpIndex7B Governor_FuelPumpIndex8A
45 0 43

Governor_FuelPumpIndex8B Governor_FuelPumpIndex9A Governor_FuelPumpIndex9B
0 42 0

Governor_Load	GovernorScale	IgnitionPressuresAverageA	IgnitionPressuresAverageB
	5.5		80.375

IgnitionPressuresCyl1A	IgnitionPressuresCyl1B	IgnitionPressuresCyl2A	IgnitionPressuresCyl2B
78	0	81	0

IgnitionPressuresCyl3A	IgnitionPressuresCyl3B	IgnitionPressuresCyl4A	IgnitionPressuresCyl4B
79	0	82	0

IgnitionPressuresCyl5A 79 IgnitionPressuresCyl5B 0 IgnitionPressuresCyl6A 80 IgnitionPressuresCyl6B 0

IgnitionPressuresCyl7A 76 IgnitionPressuresCyl7B 0 IgnitionPressuresCyl8A 88 IgnitionPressuresCyl8B 0

IgnitionPressuresCyl9A IgnitionPressuresCyl9B IntakeAirAmbientTemperature
0 0 0

IntakeAirDeltaPressChAirCoolerA IntakeAirDeltaPressChAirCoolerB
0 0

IntakeAirDeltaPressInletAirFilter IntakeAirPressAfterChAirCoolerA
0 0.65

IntakeAirPressAfterChAirCoolerB IntakeAirSuctionPressBeforeTcA
0 0

IntakeAirSuctionPressBeforeTcB	IntakeAirTempAfterChAirCoolerA
0	38.5

IntakeAirTempAfterChAirCoolerB JacketCoolingWaterHT_PressBeforeEngine
0 3.6

JacketCoolingWaterHT_TempAfterEngineA JacketCoolingWaterHT_TempAfterEngineB
80 0

JacketCoolingWaterHT_TempBeforeEngineA JacketCoolingWaterHT_TempBeforeEngineB
69 0

LubeOilFilterFlushInterv	LubOilMainSystemPressBeforeEngine	LubOilMainSystemPressBeforeTc
1 time per 2h	5	2

LubOilMainSystemTempAfterTcAB_A	LubOilMainSystemTempAfterTcAB_B
n/a	n/a

LubOilMainSystemTempBeforeEngine	Name	NozzleCoolingWaterPressBeforeEngine
45	1st Engin	2.9

NozzleCoolingWaterTempBeforeCooler	NozzleCoolingWaterTempBeforeEngine	OperatingHrs
80	78	0

Plant	AlleRemarks	RunningHoursOver100Percent	RunningHoursUnder100Percent
M/V C		0	0

SplashOilTemperatureAverage	SplashOilTemperatureCyl1	SplashOilTemperatureCyl2
57.35	57	57.7

SplashOilTemperatureCyl3	SplashOilTemperatureCyl4	SplashOilTemperatureCyl5
57.9	57.4	57.2

SplashOilTemperatureCyl6	SplashOilTemperatureCyl7	SplashOilTemperatureCyl8
57.9	56.4	57.3

SplashOilTemperatureCyl9	TimeMeasuring	Voltage
0	19:30	0