

Lub Oil Main System		
Pressure before engine	[bar]	5.2
Temperature before engine	[° C]	45
Pressure before T/C	[bar]	1.8
Temperature after T/C	[° C]	n/a
Pressure before engine	[bar]	3,0
Temperature before engine	[° C]	72
Temperature after Cyl 1	[° C]	72
Temperature after Cyl 2	[° C]	75
Temperature after Cyl 3	[° C]	74
Temperature after Cyl 4	[° C]	75
Temperature after Cyl 5	[° C]	75
Temperature after Cyl 6	[° C]	75
Temperature after Cyl 7	[° C]	75
Temperature after Cyl 8	[° C]	75
Intake Air		
Engine Room ambient temp.	[° C]	
Temp. Aft. charge air cooler	[° C]	39
Δ pressure inlet air filter	[mbar]	N/A
Δ pressure charge air cooler	[mbar]	N/A
Governor		
Load Governor	Scale	5.9
Fuel Pump Index 1	[mm]	55
Fuel Pump Index 2	[mm]	55
Fuel Pump Index 3	[mm]	54
Fuel Pump Index 4	[mm]	51
Fuel Pump Index 5	[mm]	52
Fuel Pump Index 6	[mm]	52
Fuel Pump Index 7	[mm]	54
Fuel Pump Index 8	[mm]	52
Average	[mm]	53.1

Exhaust Gas		
Exhaust gas press after T/C	[mmHg]	
Turbo / Charger speed	[rpm]	7000
Temp after Cyl 1	[° C]	375
Temp after Cyl 2	[° C]	370
Temp after Cyl 3	[° C]	372
Temp after Cyl 4	[° C]	381
Temp after Cyl 5	[° C]	405
Temp after Cyl 6	[° C]	398
Temp after Cyl 7	[° C]	401
Temp after Cyl 8	[° C]	386
Average	[° C]	386
Temp before T/C	[° C]	456
Temp after T/C	[° C]	450
Ignition Pressures		
Cylinder 1	[bar]	77
Cylinder 2	[bar]	82
Cylinder 3	[bar]	78
Cylinder 4	[bar]	82
Cylinder 5	[bar]	82
Cylinder 6	[bar]	81
Cylinder 7	[bar]	80
Cylinder 8	[bar]	81
Average	[bar]	80.4
Fuel		
Type		
Pressure before engine	[bar]	5
Temperature after preheater	[° C]	110
Viscosity after preheater	[cSt]	
Temperature service tank	[° C]	83
Temperature before engine	[° C]	

Main Bearing Temperature		
Lube Oil Inlet	[° C]	63
Main Bearing 1	[° C]	64
Main Bearing 2	[° C]	64
Main Bearing 3	[° C]	65
Main Bearing 4	[° C]	65
Main Bearing 5	[° C]	66
Main Bearing 6	[° C]	63
Main Bearing 7	[° C]	68
Main Bearing 8	[° C]	62
Main Bearing 9	[° C]	
Main Bearing 10	[° C]	
Average	[° C]	64.44
Splash Oil Monitoring		
Lube Oil Inlet	[° C]	
Cylinder 1	[° C]	55.4
Cylinder 2	[° C]	57
Cylinder 3	[° C]	56.9
Cylinder 4	[° C]	56.7
Cylinder 5	[° C]	55.7
Cylinder 6	[° C]	56.5
Cylinder 7	[° C]	56.2
Cylinder 8	[° C]	55.6
Average	[° C]	56.25
Charge Air Cooling Water		
Press before intercooler	[bar]	
Temp. before air cooler	[° C]	
Temp. after air cooler	[° C]	

Engine operating values



MAN Diesel | PrimeServ

Engine			
Plant/ vessel:	M/V CARIBBEAN FANTASY		
Engine type:	MAN B&W 8L 58/64		
Engine no.:		Operating hours:	
Ignition pressures		A	B
Cylinder 1	[bar]	77	
Cylinder 2	[bar]	82	
Cylinder 3	[bar]	78	
Cylinder 4	[bar]	82	
Cylinder 5	[bar]	82	
Cylinder 6	[bar]	81	
Cylinder 7	[bar]	80	
Cylinder 8	[bar]	81	
Cylinder 9	[bar]		
Average	[bar]	80.4	
Power			
Geno power	[kWe]	n.a.	
Engine power	[kW]		
Cos phi.		n.a.	
Voltage	[V]	n.a.	
Current	[A]	n.a.	
Engine power	[%]		
Engine n	[rpm]	344	
Intake air		A	B
Ambient temperature	[°C]		
Temp.aft.ch.air cooler	[°C]	39	
Press.aft.ch.air cooler	[bar]	0.5	
Delta press.ch.air cooler	[mbar]		
Delta press.inlet air filter	[mbar]		
Suction press.bef.tc	[mbar]		
Blow-by flap		<input type="checkbox"/> on	<input checked="" type="checkbox"/> off
Charge air preheating		<input type="checkbox"/> on	<input checked="" type="checkbox"/> off
Crankcase pressure [mm/H ₂ O]			
Fuel			
Press.before engine	[bar]	5.0	
Temp.after preheater	[°C]	110	
Viscosity aft.preheat.	[cSt]		
Temp. service tank	[°C]	83	
Temp. Bef. Engine	[°C]		
Nozzle cooling water			
Press.bef.engine	[bar]	3.8	
Temp.bef.engine	[°C]	73	
Temp. Bef. Cooler	[°C]		
Lub oil main system		A	B
Press.bef. engine	[bar]	5.2	
Temp.bef. engine	[°C]	45	
Press.bef.tc	[bar]	1.8	
Temp.after tc A/B	[°C]	n/a	n/a
Jacket cooling water (HT)			
Press.bef.engine	[bar]	3.6	
Temp.bef.engine	[°C]	69	
Temp.aft.engine	[°C]	80	
Charge air cooling water (HT + LT)			
Press.bef.intercooler	[bar]		
Temp.bef.intercooler HT	[°C]		
Temp.aft.intercooler HT	[°C]		
Temp.bef.intercooler LT	[°C]		
Temp.aft.intercooler LT	[°C]		
Bearing temperature			
OI	[°C]	63.0	
I	[°C]	64.0	
II	[°C]	64.0	
III	[°C]	65.0	
IV	[°C]	65.0	
V	[°C]	66.0	
VI	[°C]	63.0	
VII	[°C]	68.0	
VIII	[°C]	62.0	
IX	[°C]		
X	[°C]		
Average	[°C]	64.44	
Splash oil temperature			
Cyl. 1	[°C]	55.4	
Cyl. 2	[°C]	57.0	
Cyl. 3	[°C]	56.9	
Cyl. 4	[°C]	56.7	
Cyl. 5	[°C]	55.7	
Cyl. 6	[°C]	56.5	
Cyl. 7	[°C]	56.2	
Cyl. 8	[°C]	55.6	
Cyl. 9	[°C]		
Average	[°C]	56.25	

Engine operating values

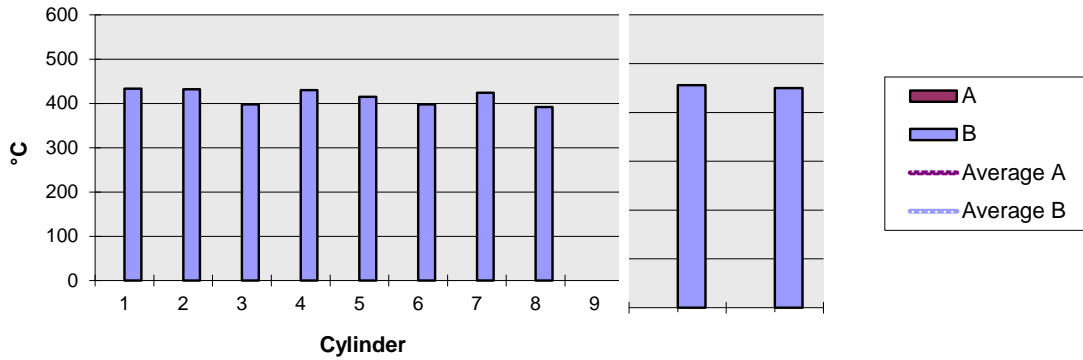


MAN Diesel | PrimeServ

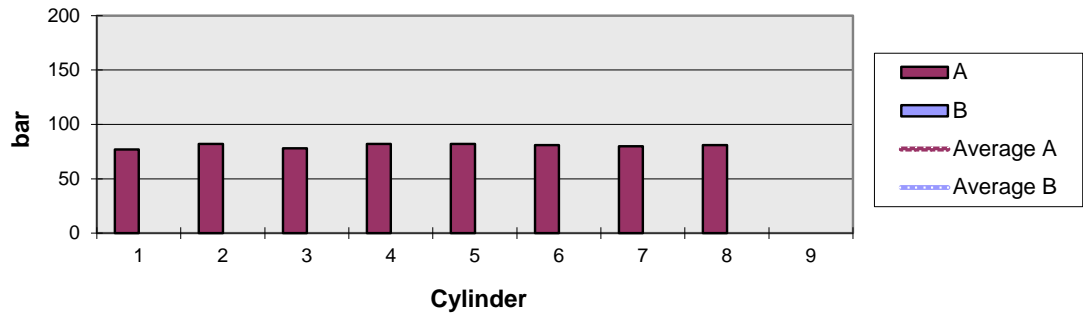
Engine

Plant/ vessel:	M/V CARIBBEAN FANTASY		
Engine type:	MAN B&W 8L 58/64		
Engine no.:		Operating hours:	

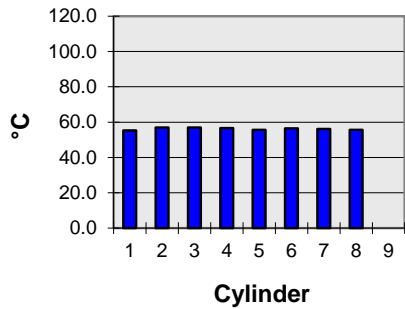
Exhaust gas temperature



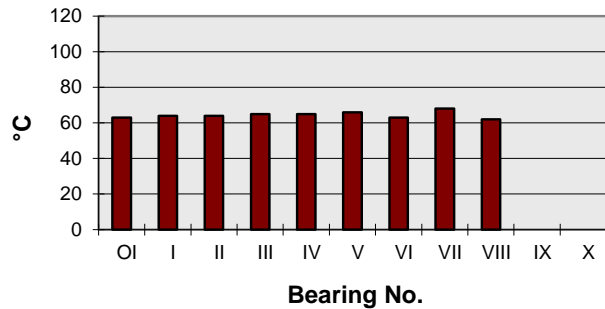
Ignition pressure



Splash oil temperature



Bearing temperature



BearingTemperatureAverage	BearingTemperatureI	BearingTemperatureII	BearingTemperatureIII
64.44444444	64	64	65

BearingTemperatureIV BearingTemperatureIX BearingTemperatureOI BearingTemperatureV
65 0 63 66

BearingTemperatureVI BearingTemperatureVII BearingTemperatureVIII BearingTemperatureX
63 68 62 0

ChargeAirCoolingWaterHT_LT_PressBeforeIntercooler
0

ChargeAirCoolingWaterHT_LT_TempAfterIntercoolerHT_A
0

ChargeAirCoolingWaterHT_LT_TempAfterIntercoolerHT_B
0

ChargeAirCoolingWaterHT_LT_TempAfterIntercoolerLT_A
0

ChargeAirCoolingWaterHT_LT_TempAfterIntercoolerLT_B
0

ChargeAirCoolingWaterHT_LT_TempBeforeIntercoolerHT_A
0

ChargeAirCoolingWaterHT_LT_TempBeforeIntercoolerHT_B
0

ChargeAirCoolingWaterHT_LT_TempBeforeIntercoolerLT_A
0

ChargeAirCoolingWaterHT_LT_TempBeforeIntercoolerLT_B ConsumptionFuelOil
0 N/A

ConsumptionLubeOil	CosPhi	Current	CustomerDestination	CustomerName	Date
0	n.a.	n.a.	SANTO DOMINGO -	BAJA FERRIES	21.01.2016

DateMeasuring	DateTimeMeasuring	Department	EngineNo	EnginePower	EnginePowerPercent
21.01.2016	#VALUE!	ENGINE	0	0	0

EngineRPM	Enginetype	ExhGasAfterTurbochargerA	ExhGasAfterTurbochargerB
344	MAN B&W {	0	450

ExhGasAverageA	ExhGasAverageB	ExhGasBeforeTurbochargerA	ExhGasBeforeTurbochargerB
	415.25	0	456

ExhGasNtcAB_A ExhGasNtcAB_B ExhGasPressAftTcA ExhGasPressAftTcB
0 7000 0 0

ExhGasTempAfterCyl1A	ExhGasTempAfterCyl1B	ExhGasTempAfterCyl2A
0	433	0

ExhGasTempAfterCyl2B	ExhGasTempAfterCyl3A	ExhGasTempAfterCyl3B
432	0	398

ExhGasTempAfterCyl4A ExhGasTempAfterCyl4B ExhGasTempAfterCyl5A
0 430 0

ExhGasTempAfterCyl5B	ExhGasTempAfterCyl6A	ExhGasTempAfterCyl6B
415	0	398

ExhGasTempAfterCyl8B	ExhGasTempAfterCyl9A	ExhGasTempAfterCyl9B	FuelOilFilterFlushInterv
392	0	0	0

FuelPressBeforeEngine	FuelTempAfterPreheater	FuelTempBeforeEngine	FuelTempServiceTank
5	110	0	83

FuelViscosityAfterPreheat	GenoPower	Governor_AverageA	Governor_AverageB
0	n.a.		53.125

Governor_FuelPumpIndex1A Governor_FuelPumpIndex1B Governor_FuelPumpIndex2A
55 0 55

Governor_FuelPumpIndex2B Governor_FuelPumpIndex3A Governor_FuelPumpIndex3B
0 54 0

Governor_FuelPumpIndex4A Governor_FuelPumpIndex4B Governor_FuelPumpIndex5A
51 0 52

Governor_FuelPumpIndex5B Governor_FuelPumpIndex6A Governor_FuelPumpIndex6B
0 52 0

Governor_FuelPumpIndex7A Governor_FuelPumpIndex7B Governor_FuelPumpIndex8A
54 0 52

Governor_FuelPumpIndex8B Governor_FuelPumpIndex9A Governor_FuelPumpIndex9B
0 0 0

Governor_Load	GovernorScale	IgnitionPressuresAverageA	IgnitionPressuresAverageB
	5.9		80.375

IgnitionPressuresCyl1A	IgnitionPressuresCyl1B	IgnitionPressuresCyl2A	IgnitionPressuresCyl2B
77	0	82	0

IgnitionPressuresCyl3A	IgnitionPressuresCyl3B	IgnitionPressuresCyl4A	IgnitionPressuresCyl4B
78	0	82	0

IgnitionPressuresCyl5A	IgnitionPressuresCyl5B	IgnitionPressuresCyl6A	IgnitionPressuresCyl6B
82	0	81	0

IgnitionPressuresCyl7A IgnitionPressuresCyl7B IgnitionPressuresCyl8A IgnitionPressuresCyl8B
80 0 81 0

IgnitionPressuresCyl9A IgnitionPressuresCyl9B IntakeAirAmbientTemperature
0 0 0

IntakeAirDeltaPressChAirCoolerA IntakeAirDeltaPressChAirCoolerB
0 0

IntakeAirDeltaPressInletAirFilter	IntakeAirPressAfterChAirCoolerA
0	0.53

IntakeAirPressAfterChAirCoolerB IntakeAirSuctionPressBeforeTcA
0 0

IntakeAirTempAfterChAirCoolerB JacketCoolingWaterHT_PressBeforeEngine
0 3.6

JacketCoolingWaterHT_TempAfterEngineA JacketCoolingWaterHT_TempAfterEngineB
80 0

JacketCoolingWaterHT_TempBeforeEngineA JacketCoolingWaterHT_TempBeforeEngineB
69 0

LubeOilFilterFlushInterv	LubOilMainSystemPressBeforeEngine	LubOilMainSystemPressBeforeTc
1 time per 2 h.	5.2	1.8

LubOilMainSystemTempAfterTcAB_A	LubOilMainSystemTempAfterTcAB_B
n/a	n/a

LubOilMainSystemTempBeforeEngine	Name	NozzleCoolingWaterPressBeforeEngine
45	1st Engin	3.8

NozzleCoolingWaterTempBeforeCooler	NozzleCoolingWaterTempBeforeEngine	OperatingHrs
0	73	0

Plant	AlleRemarks	RunningHoursOver100Percent	RunningHoursUnder100Percent
M/V C		0	0

SplashOilTemperatureAverage	SplashOilTemperatureCyl1	SplashOilTemperatureCyl2
56.25	55.4	57

SplashOilTemperatureCyl3	SplashOilTemperatureCyl4	SplashOilTemperatureCyl5
56.9	56.7	55.7

SplashOilTemperatureCyl6	SplashOilTemperatureCyl7	SplashOilTemperatureCyl8
56.5	56.2	55.6

SplashOilTemperatureCyl9	TimeMeasuring	Voltage
0	19:00	n.a.

Filters		
Consumption Lube Oil		
Lube Oil filter flush interval	[1/hr]	1/2h
Consumption Fuel Oil		

Nozzle Cooling Media		
Pressure before engine	[bar]	3.8
Temperature before engine	[° C]	73
Temperature before cooler	[° C]	

Power		
Engine actual speed	[rpm]	344
Engine Nominal Output	[HP]	
Engine Actual Output	[HP]	
Engine Actual Output	[%]	

Vessel's speed

Sea:

Wind speed:

Wind direction:

Draught Fwd: [M]

Draught Mid: [M]

Draught Aft: [M]

IGOR SHEVCHENKO

First Engineer - Name and Signature

Date:

Place:

IAKOVOS PRINTEZIS

Chief Engineer - Name and Signature

Superintendent's assesment and comments:

Date: **21 JAN 2016**

Place: **SAN JUAN, PR**

IAKOVOS PRINTEZIS

Ship Superintendent - Name and Signature