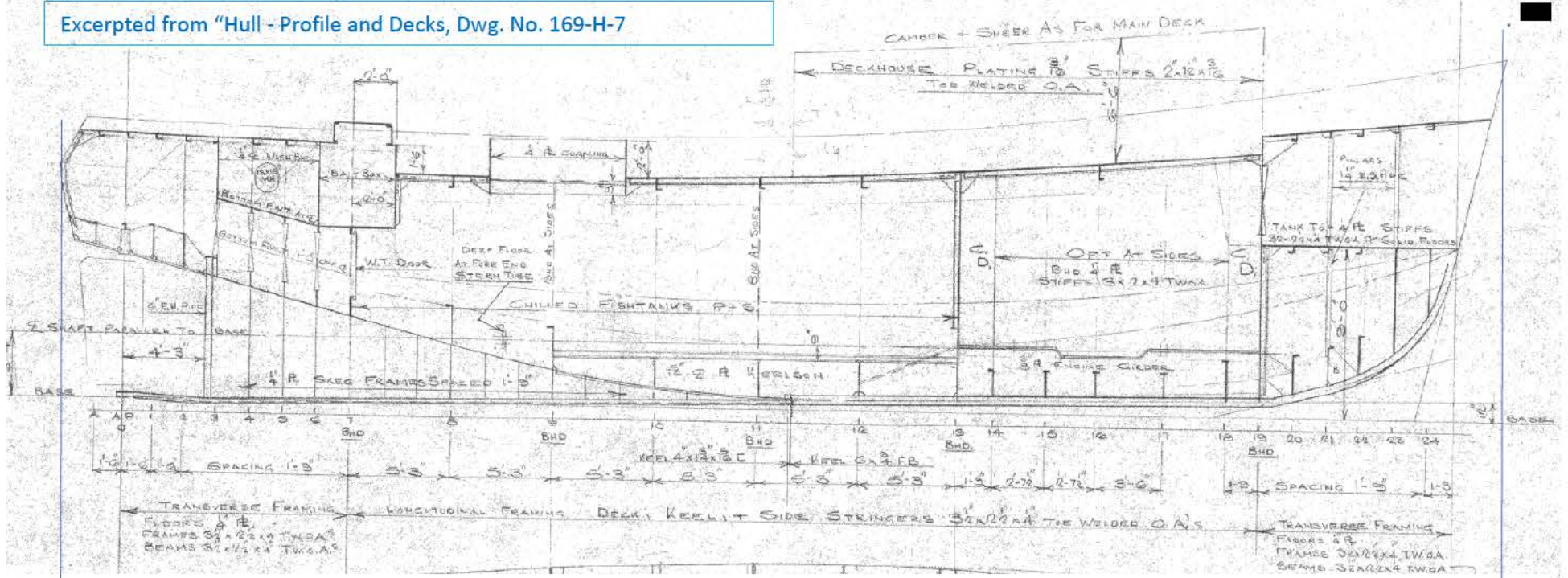
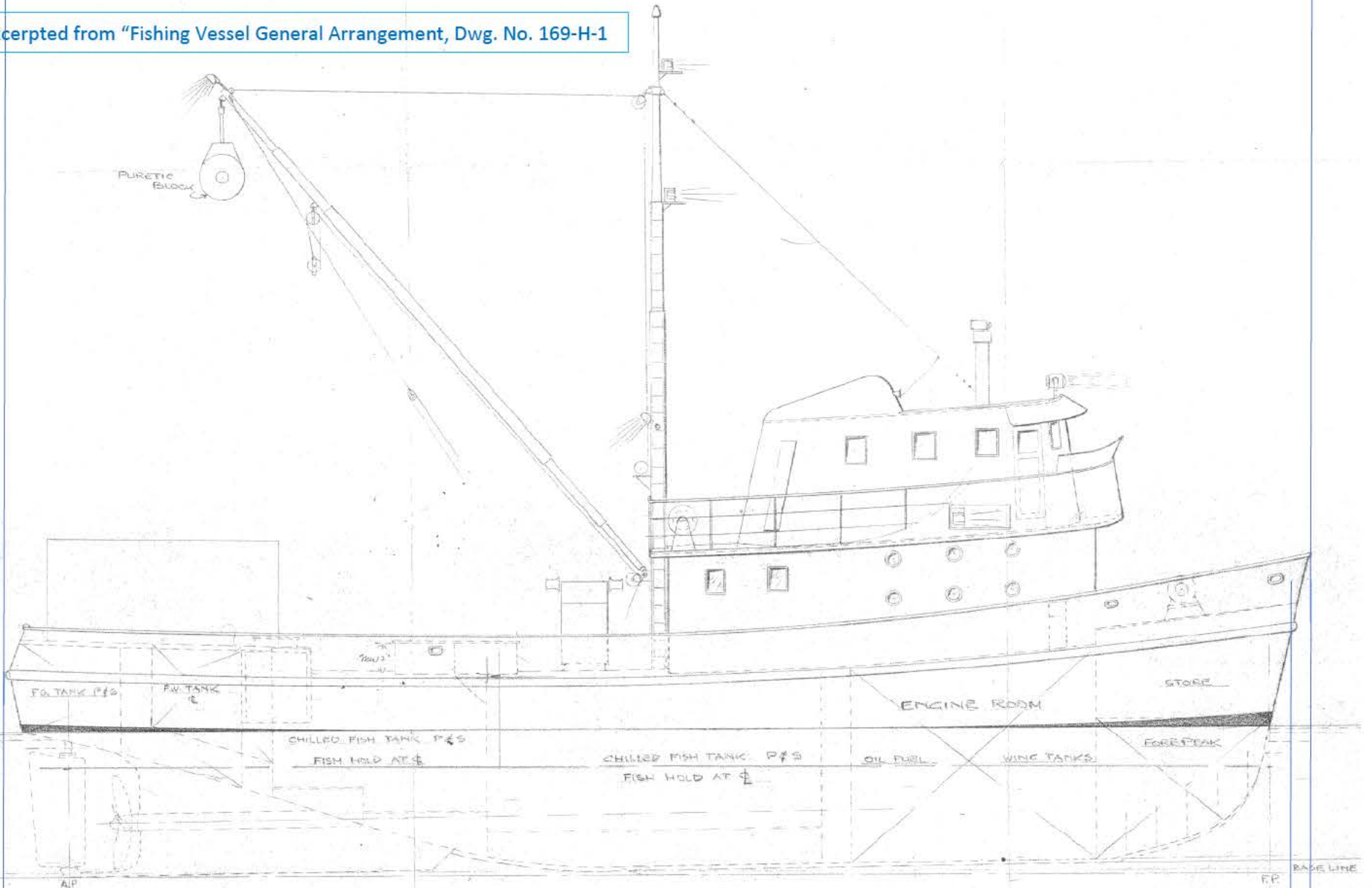


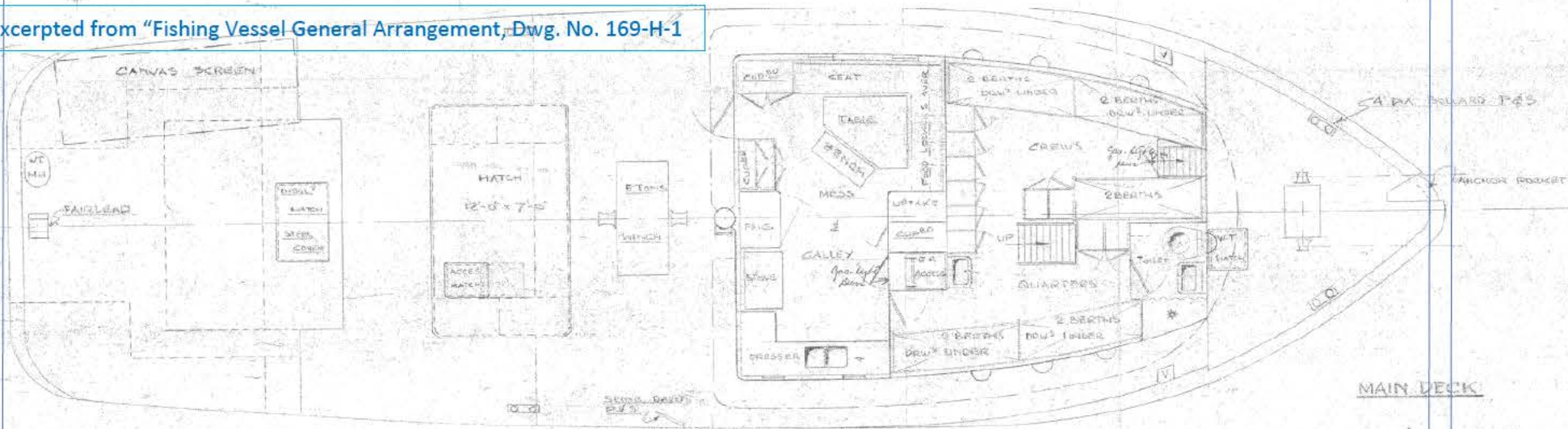
Excerpted from "Hull - Profile and Decks, Dwg. No. 169-H-7



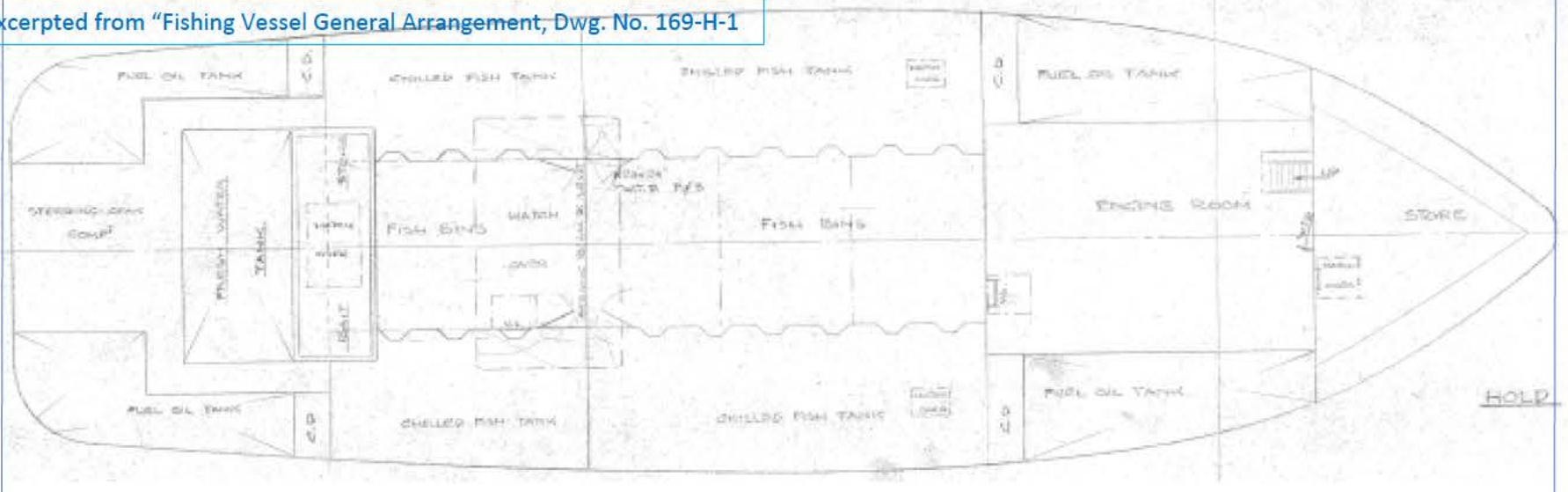
Excerpted from "Fishing Vessel General Arrangement, Dwg. No. 169-H-1



Excerpted from "Fishing Vessel General Arrangement, Dwg. No. 169-H-1

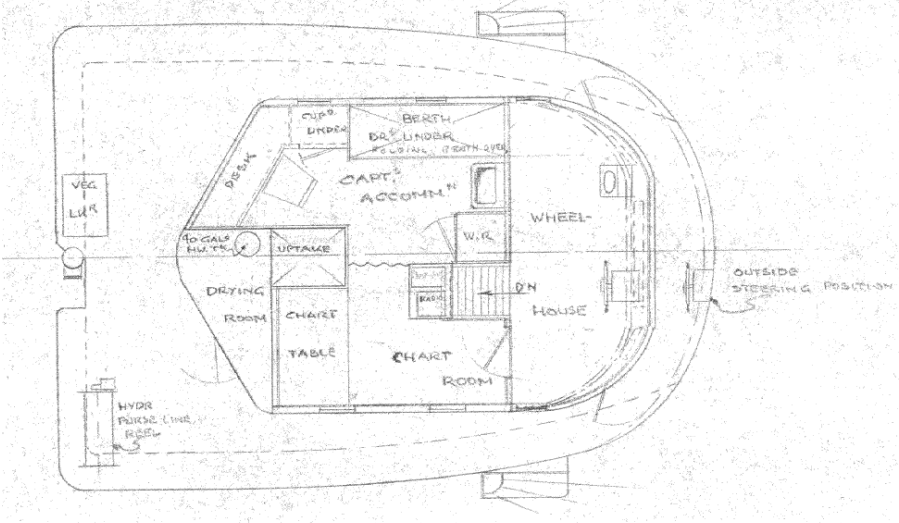


Excerpted from "Fishing Vessel General Arrangement, Dwg. No. 169-H-1



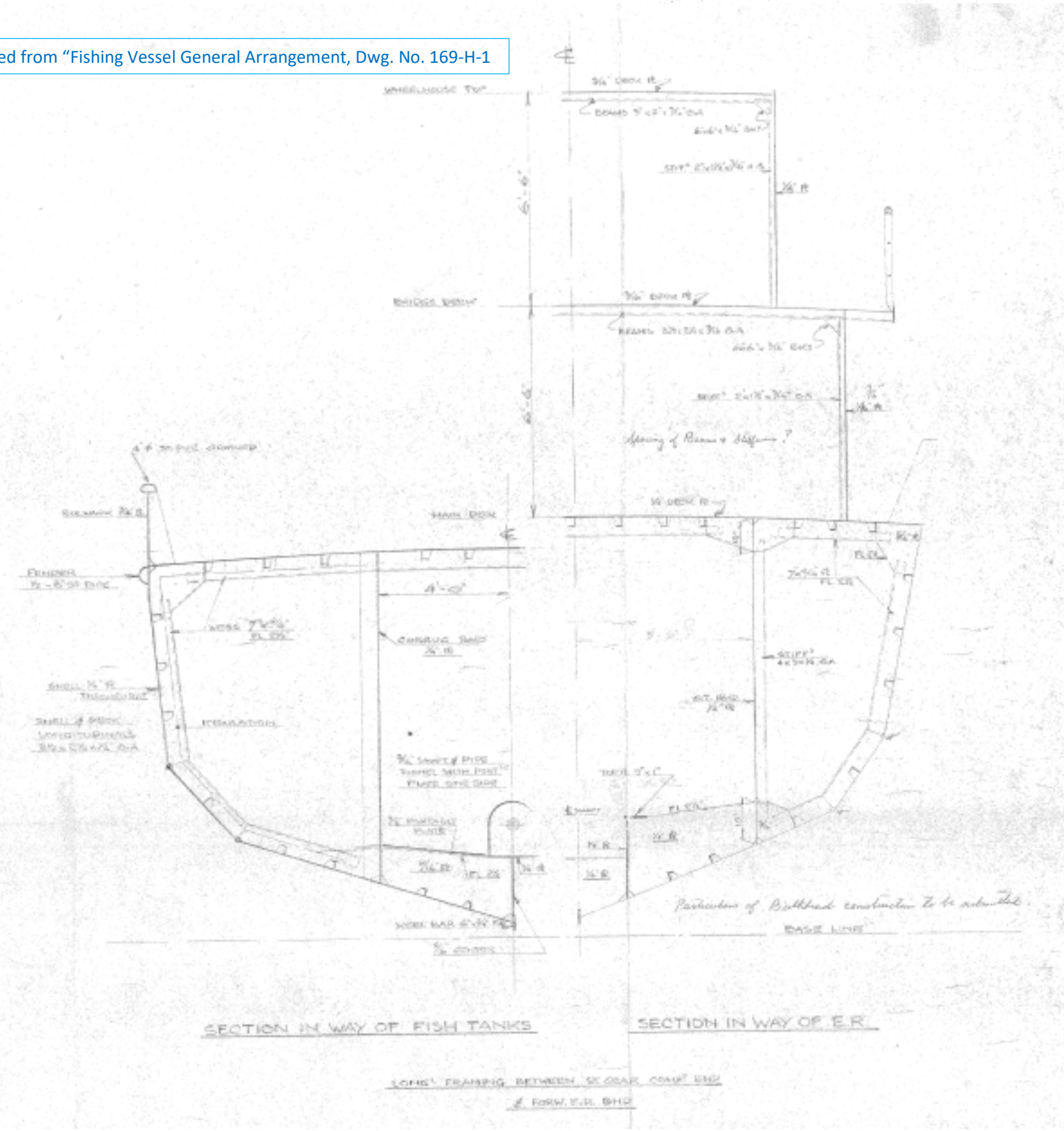
Excerpted from "Fishing Vessel General Arrangement, Dwg. No. 169-H-1

LENGTH OVER ALL	48' 7 1/2"
LENGTH BP	69'-0"
BREADTH OVER (MAXIMUM)	33'-0"
DEPTH OVER (MAXIMUM)	11'-0"

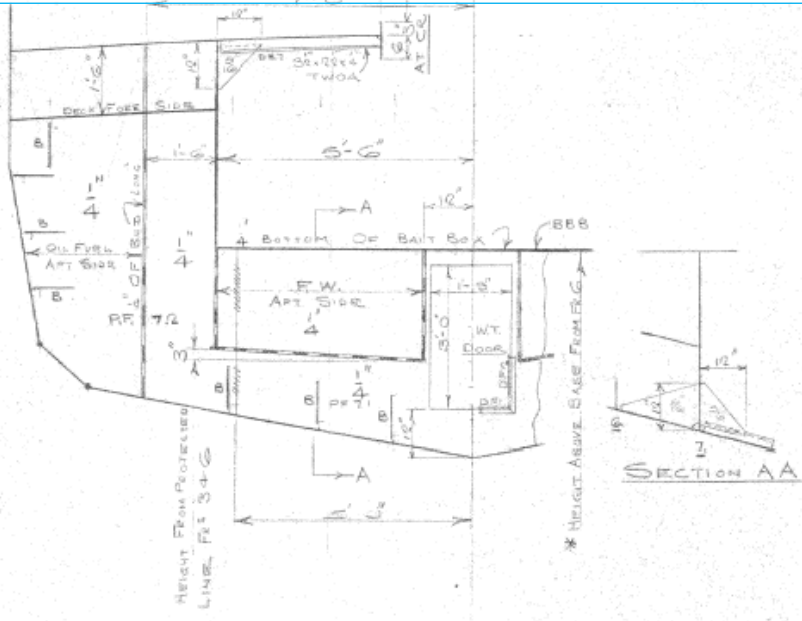


BRIDGE DECK

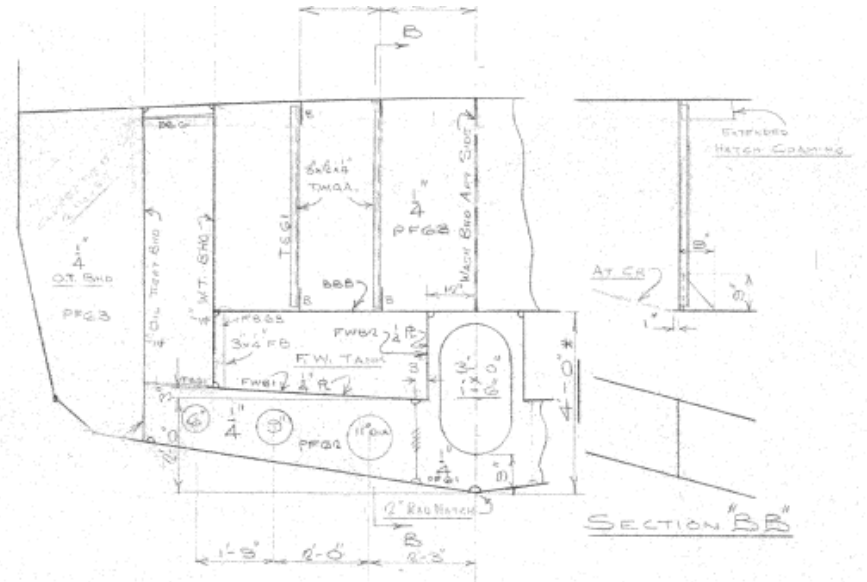
Excerpted from "Fishing Vessel General Arrangement, Dwg. No. 169-H-1



Excerpted from "Hull – Framing Plan Aft, Dwg. No. 169-H-6

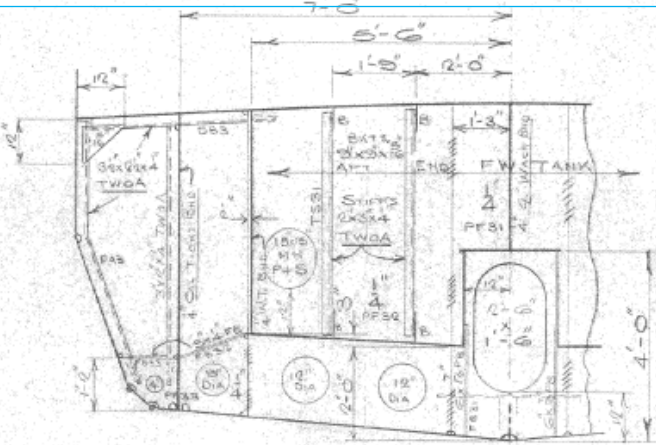


BHD 7 (Lug Aft)

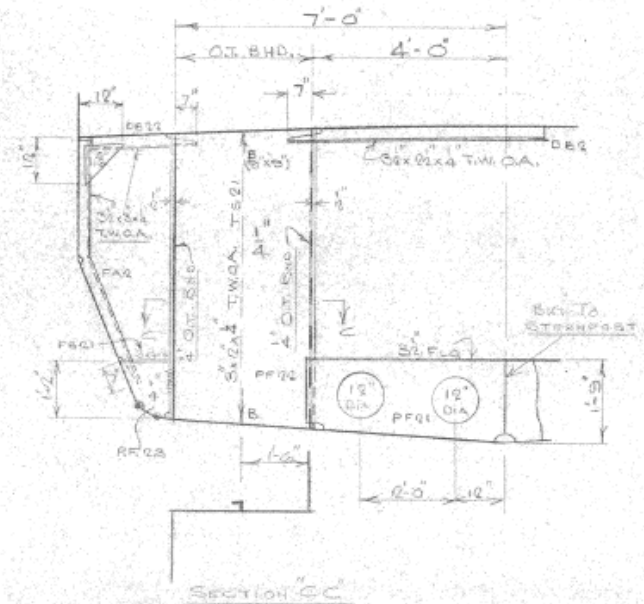


FRAME 6 (Lug Aft)

Excerpted from "Hull – Framing Plan Aft, Dwg. No. 169-H-6

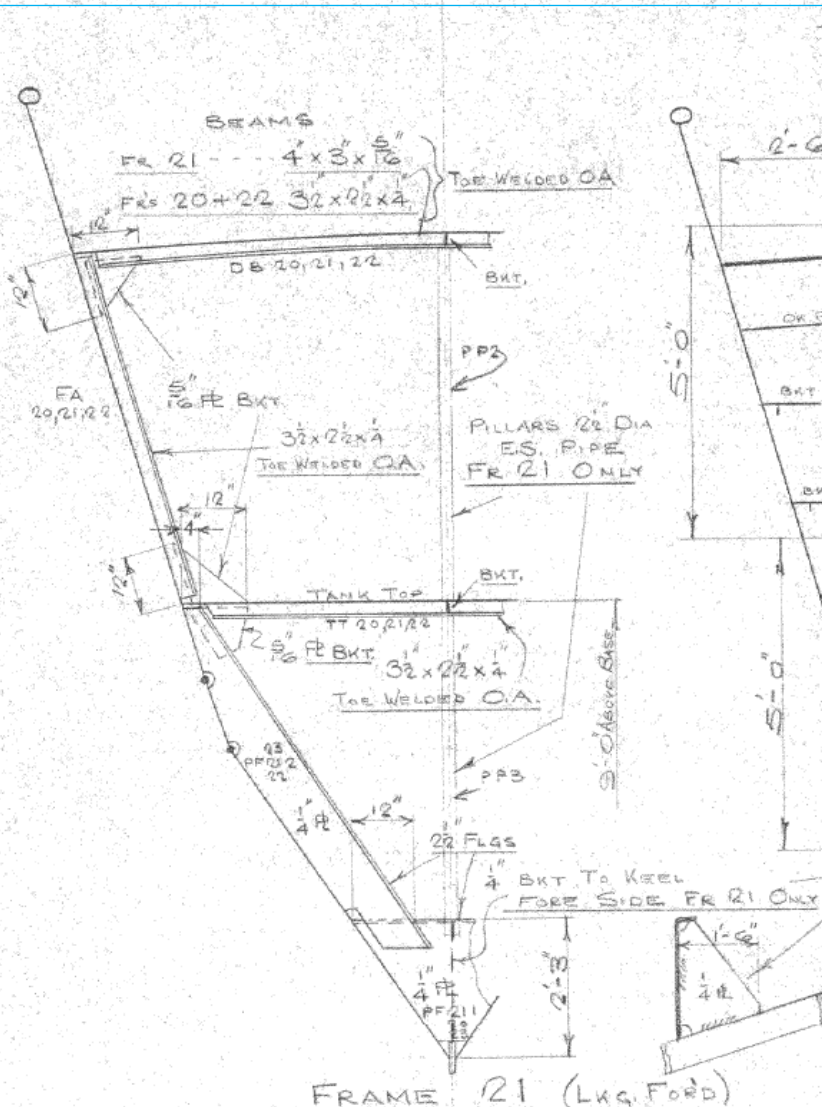


FRAME 3 (Lug Aft)

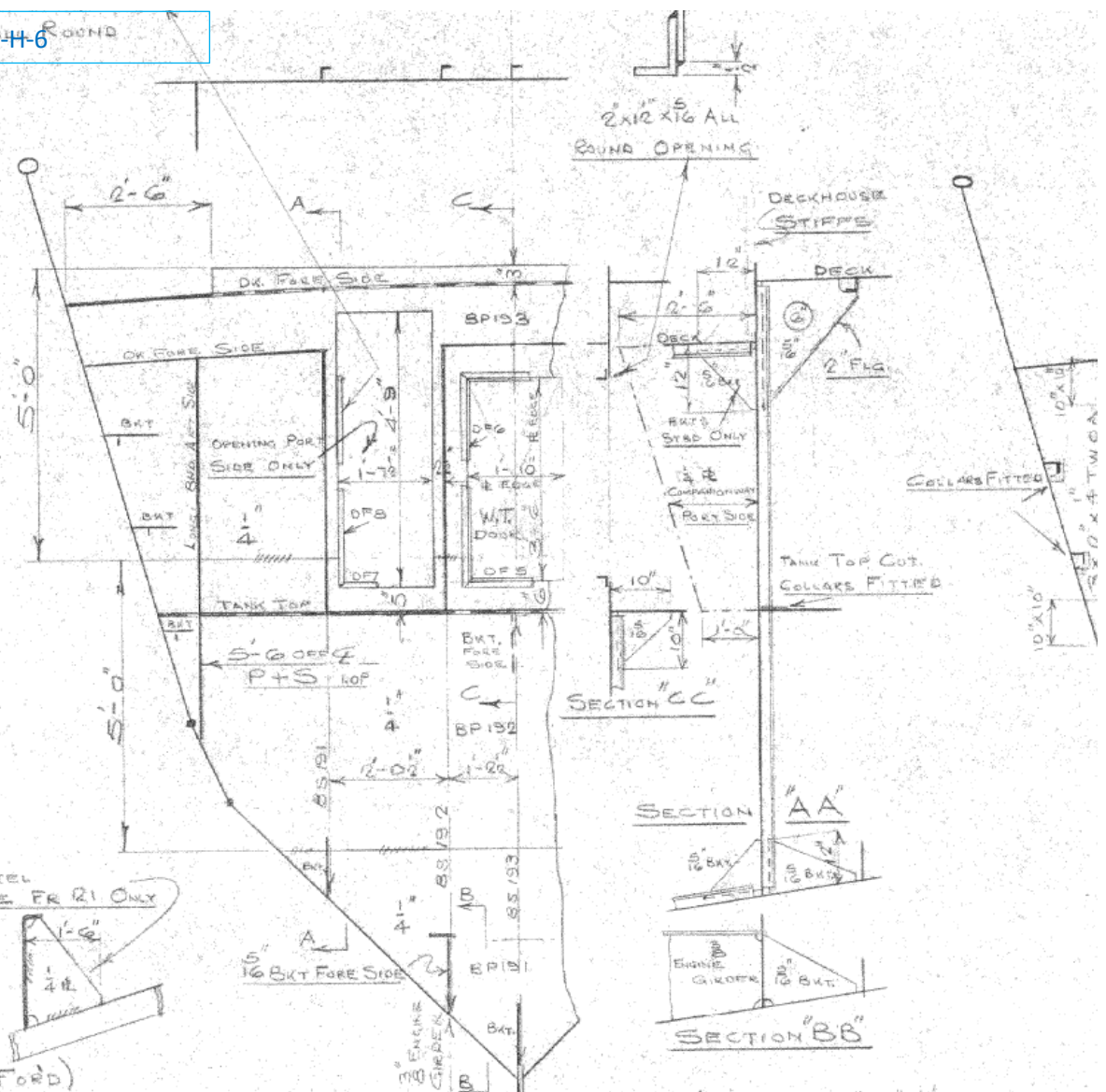


FRAME 2 (Lug Aft)

Excerpted from "Hull – Framing Plan Fwd, Dwg. No. 169-H-6

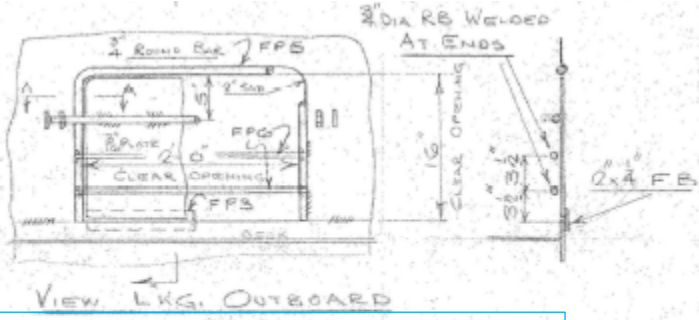


FRAME 21 (Lug Ford)  
TYPICAL FOR FRAMES 20+22



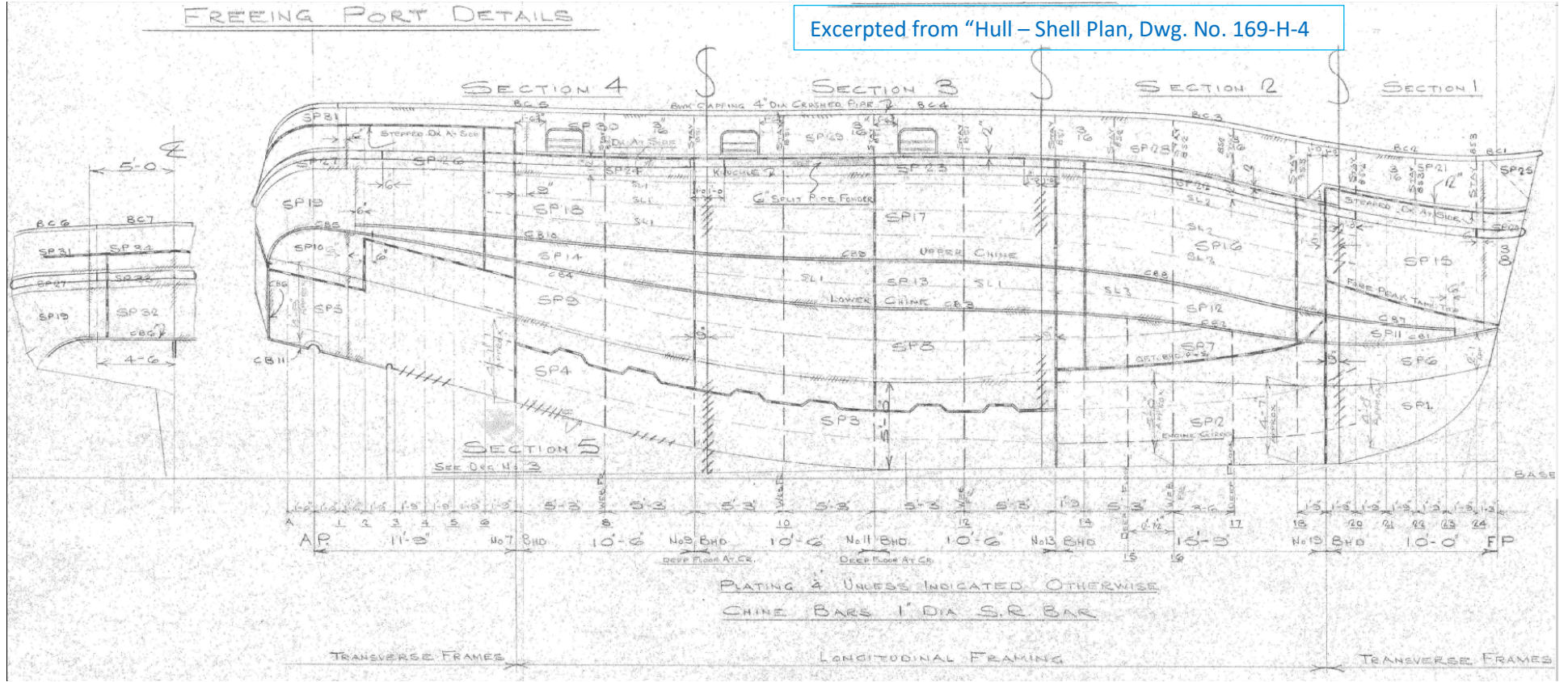
BHD. 19 (Lug Ford) STIFFS 3" X 2" X 1/4" TOP WELDED O.A.





Excerpted from "Hull - Shell Plan, Dwg. No. 169-H-4"

FREEING PORT DETAILS



Excerpted from "Hull - Shell Plan, Dwg. No. 169-H-4"

FREEING PORT DETAILS

PLATING & UNLESS INDICATED OTHERWISE  
CHINE BARS 1" DIA S.R. BAR

TRANSVERSE FRAMES

LONGITUDINAL FRAMING

TRANSVERSE FRAMES